

	Plate Type			Button Type				Button Shape			Switch Type			Illumination Options							
	Model	Single Gang	Double Gang	Narrow Stile	Green Button	Red Button	Blue Button	Black Button	Steel Button	Square Rectangle	Mushroom	Extra Large	Screened (S)/ Engraved (E) Labeled (L)	Momentary	Alternate	DPDT	SPDT	Timer	Illuminated color	LED	Required Box Clearance
Standard	TS-2	●			●	2R				●			Button (L)	●		TS-2-2	●			●	2-1/2"
	TS-3	●			●	3R				●			Button (L)	●		TS-3-2	●			●	2-1/2"
	TS-4	●					●			●			Button (L); ADA	●		TS-4-2	●			●	2-1/2"
	TS-5	●					●			●			Button (L); ADA	●		TS-5-2	●			●	2-1/2"
	TS-7	●				●	TS-7R				●		Button (L)	●	TS-7L	●		TS-7T		●	1-1/4"
Electronic Timer	TS-9			●	●	TS-9R					●		Button (L)	●	TS-9L	●		TS-9T		●	1-1/4"
	TS-2T	●			●	2TRED				●			Button (L)	●		TS-2TD	TS-2-2T	●		●	2-1/2"
	TS-3T	●			●					●			Button (L)	●		TS-3TD	TS-3-2T	●		●	2-1/2"
	TS-4T	●					●			●			Button (L); ADA	●		TS-4TD	TS-4-2T	●		●	2-1/2"
Pneumatic Timer	TS-5T	●					●			●			Button (L); ADA	●		TS-5TD	TS-5-2T	●		●	2-1/2"
	TS-14	●	TS-14DG	TS-14N	●	TS-14R, TS-14NR		TS-14BLUE	TS-14BLACK		●		Plate (S)					●			2-1/4"
	TS-15			●					●				Plate (S)					●			1-1/4"
	TS-16	●							●				Plate (S)					●			1-1/4"
	TS-21RPN	●				TS-21GPN	●					●	Plate (S)					●			1-1/4"
Vandal Resistant	TS-60	●				●						●	Button (E)					●			1-1/4"
	TS-10	●								●			Plate (S)	●		●		TS-10T			1-1/2"
	TS-11			●					●				Plate (S)	●		●		TS-11T			1-1/2"
	TS-12	●							●				Plate (S)	●		●		TS-12T			1-1/2"
	TS-13	●			●				●				Plate (S)	●		●		TS-13T			1-1/2"
Panic, Lockdown & Emergency Release	PBL	●			PBL-1GREEN	●					●		Plate (S)	●		●					2-1/2"
	PBM	●				●					●		Plate (S)	●							2-1/2"
	EB	●			EB-1GREEN			EB-1BLACK			●		Plate (S)	●	EB-1LATCH						2-1/2"
	TS-25	●			TS-25G		TS-25B			●			Plate (S), Button (L)	TS-25MOMENTARY	●	●			●		2-1/2"
	TS-26			●	TS-26G					●			Plate (S), Button (L)	TS-26MOMENTARY	●	●					2-1/2"
Under Desk	GBS-1												Glass (S)				●				
	DE-1		●		●	DE-1RED				●			Plate (S), Button (L)							●	
	TS-18																TS-18D				
	TS-19																●				
Vandal Resistant Push Plates	TS-20													●			●				
	PN			●									Plate (E)								Non-pneumatic: 1-3/8"
	PT	●											Plate (E)								Pneumatic: 1-1/2"
	PS	●											Plate (E)								
Jumbo Push Plates	PD														●		TS-20D				
	JP		5.5" square jumbo plate								●		Plate (E)								

Alarm Controls push buttons are fully customizable through our Custom Program. Contact the factory for more information.



Patent pending and/or patent www.assaabloydss.com/patents

Copyright © 2021, Hanchett Entry Systems, Inc., an ASSA ABLOY Group company. All rights reserved. Reproduction in whole or in part without the express written permission of Hanchett Entry Systems, Inc. is prohibited. AC-029-0621

Printed in the U.S.A.

Part of ASSA ABLOY

Alarm Controls Request-to-Exit Push Button Comparison Guide

USA

(p) 800.645.5538 | (f) 631.586.6500
alarmcontrols.com

customerservice.alarmcontrols@assaabloy.com
techsupport.alarmcontrols@assaabloy.com

Custom Product Inquiries

custom.alarmcontrols@assaabloy.com

CANADA

(p) 800.461.3007 | (f) 800.461.8989
assaabloydss.ca

Customer Support in Canada

sales.dss.ca@assaabloy.com

alarmcontrols.com



Access. Value. Today.



It All Starts with the Push of a Button

Our full suite of affordable, customizable push buttons provide a convenient way to add authorized access control for a range of applications. With our variety and value, you'd be hard pressed to find better buttons.



TS-2

TS-3



TS-4

TS-5



TS-9



TS-2T

TS-3T



TS-4T

TS-5T

Request to Exit

Provide a convenient way to add authorized access control to a variety of applications. Options for standard, pneumatic or electronic timed.

Standard Features (all models):

- Lifetime warranty
- UL294 listed
- Custom labelling available
- Custom finishes available

Standard Buttons: With square or rectangular push buttons.

TS-2, TS-3, TS-4, TS-5

- 2-1/2" switch depth behind plate is shorter than competitor models
- SPDT
- Available options to include: switch output, custom button colors, labels and screening, and plate finishes
 - TS-2: 2" Square Green, "PUSH TO EXIT"
 - TS-3: 2" Square Green, "PUSH TO EXIT", 1/2" Red LED
 - TS-4: 2" Square Green, "ADA Symbol"
 - TS-5: 2" Square Green, "ADA Symbol", 1/2" Red LED

TS-7, TS-9

- Single gang or narrow 1-3/4" stainless steel wall plate
- 5/8" x 7/8" green rectangular push button labeled "PUSH TO EXIT"

Electronic Timer Version: Provide a convenient way, in standard applications, to keep the door unlocked for a specified amount of time. The door will relock when the relay time has expired.

TS-2T, TS-3T, TS-4T, TS-5T

- Timer delay adjustable 2 to 45 seconds
- 2-1/2" switch depth behind plate is shorter than competitor models
- Available options to include: switch output, custom button colors, labels and screening, and plate finishes
 - TS-2T: 2" Square Green, SPDT, "PUSH TO EXIT"
 - TS-3T: 2" Square Green, SPDT, "PUSH TO EXIT", 1/2" Red LED
 - TS-4T: 2" Square Green, SPDT, "ADA Symbol"
 - TS-5T: 2" Square Green, SPDT, "ADA Symbol", 1/2" Red LED



TS-14

TS-16



TS-21RPN

TS-60



TS-10

TS-11



TS-12

TS-13



TS-25

TS-26



GBS-1

Pneumatic Version: Provide a convenient way to keep the door unlocked for a specified amount of time. The door will relock when the relay time has expired. Ideal for specialized applications.

- Adjustable pneumatic time delay 2 to 60 seconds
- Custom plate finishes, labels and screening available

TS-14

- Single gang stainless steel wall plate with green mushroom push button labeled "PUSH TO EXIT"

TS-15, TS-16

- Single gang or narrow 1-3/4" stainless steel wall plate
- 1/4" push button with guard ring

TS-21RPN

- Single gang stainless steel wall plate
- Extra-large 2-1/2" mushroom push button labelled "PUSH TO EXIT"

TS-60

- Single gang wall plate with 430 stainless steel finish
- 2-1/2" extra-large red mushroom push button engraved "PUSH TO EXIT" in white letters

Vandal Resistant

Designed for indoor, outdoor, commercial and industrial applications.

TS-10, TS-11, TS-12, TS-13

- Vandal resistant 3/4" push button, plate screened "PUSH TO EXIT"
- Momentary action switch
- Available with timer relay for timed access applications
- Custom screening available
 - TS-10: Single gang, DPDT, "PUSH TO EXIT", red and green LED status indicators, add "302" to part number for weatherproof option
 - TS-11: Narrow 1-3/4" wall plate, DPDT, "PUSH TO EXIT", red and green LED status indicators
 - TS-12: Single gang, DPDT, "PUSH TO EXIT", add "302" to part number for weatherproof option
 - TS-13: Narrow 1-3/4" wall plate, DPDT, "PUSH TO EXIT"

Panic, Lockdown & Emergency Release

PBL, PBM, EB Series: Emergency panic stations to quickly call for assistance and provide immediate and reliable egress. Options for latching or momentary action switches.

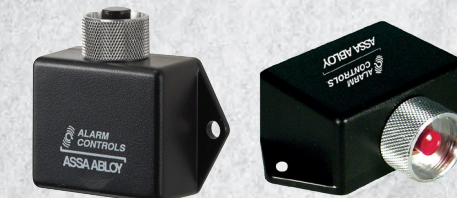
- Available in a number of configurations, plate finishes and widths

TS-25, TS-26: Provide effective means of securing an exit door while providing egress during an emergency.

GBS-1: Provides immediate unlocking of perimeter and interior doors to provide egress during an emergency.



DE-1



TS-18

TS-19



TS-20



PN

PT



PS

PD



JP-1

JP-2



JP-3

Panic, Lockdown & Emergency Release (continued)

DE-1 Delayed Egress Timer

- Alarm will sound with unauthorized door entry
- 2 second nuisance delay
- Key switch reset and relock (optional auto reset)

Under Desk

Concealed under desk push buttons for front/desk reception or hard to wire areas to discreetly control locking devices.

TS-18, TS-19, TS-20

- Surface mounted push button, with guard ring, to operate switch contacts
- TS-18, TS-19 with momentary action switch; TS-20 with alternate action switch

Push Plates

With hardwired switches designed for automatic door activation and request to exit applications in high traffic areas.

Vandal Resistant: available in a number of different finishes and engraving. This series offers a bezel design and relief behind the plate for increased security.

PN, PT, PS, PD Series

- PN narrow stile plate for mullion mounting
- PT T-style plate
- PS single gang plate mounted on single gang electrical box
- PD double gang electrical box
- Machined from solid aluminium with engraved text and anodized finish
- Tamper resistant mounting

Jumbo: available in SPDT, DPDT and Pneumatic time delay options.

JP Series

- Heavy duty 5.5" square steel push plate
- Mounts on standard two gang electrical box
- Time range settable between 2 and 60 seconds
- For non-pneumatic models, depth behind plate is 1.5"
- For pneumatic models, depth behind plate is 2.25"

Accessories

Weather resistant back boxes and covers provide added protection for outdoor locations.

- Add "302" to a part number, except TS-2-5, to convert standard part to weatherproof part.

For more information on product features and specifications, please visit www.alarcontrols.com