



DW-HDSPOTMOD DW-HDSPOTMOD16



DW-HDSPOTMOD



DW-HDSPOTMOD16

Default Login Information

Username: **admin** Password: **no password**

WHAT'S IN THE BOX

| | | | | | |
|-------------------|--|-------|--------------------|--|-------|
| Quick Start Guide | | 1 Set | 12V DC power cable | | 1 Set |
| USB mouse | | 1 Set | | | |

NOTE: Download All Your Support Materials and Tools in One Place

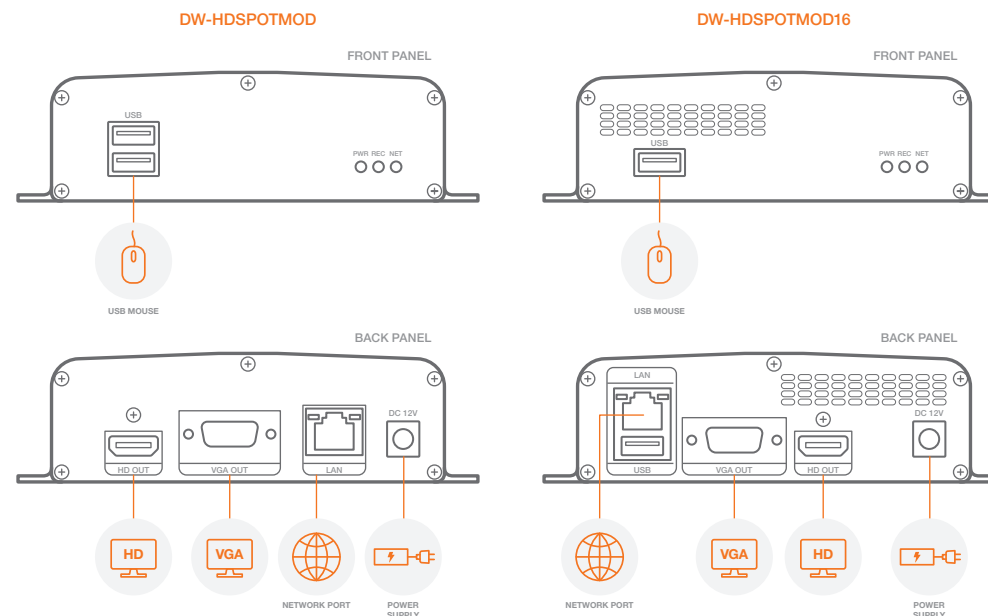
- Go to: <http://www.digital-watchdog.com/support-download/>
- Search your product by entering the part number in the 'Search by Product' search bar. Results for applicable part numbers will populate automatically based on the part number you enter.
- Click 'Search'. All supported materials, including manuals, Quick Start Guides (QSG), software and firmware will appear in the results.

Attention: This document is intended to serve as a quick reference for initial set-up. It is recommended that the user read the entire instruction manual for complete and proper installation and usage.

The Digital Watchdog Spot™ monitoring module requires only 2 steps to complete the installation—local configuration off-site, and power and monitor connection at the site.

STEP 1 – SETTING UP THE SPOT MONITORING MODULE OFF SITE

- Connect the module to an appropriate power supply.
- Connect the module to a local monitor off site for configuration.
- Make sure the module is connected to the same network as your IP cameras, Universal HD over Coax® VMAX® A1™ DVRs or VMAX IP Plus™ NVR.

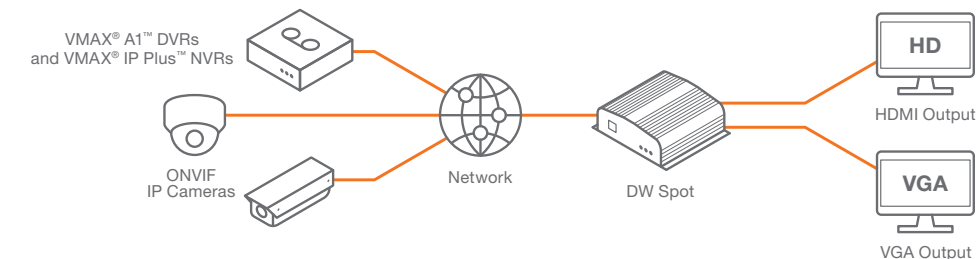
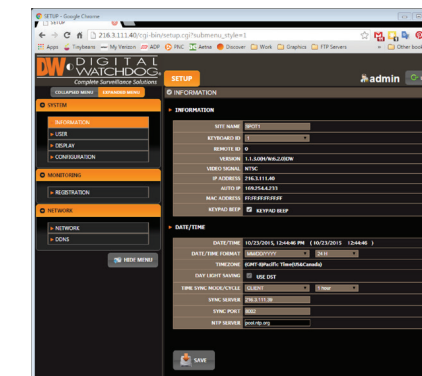
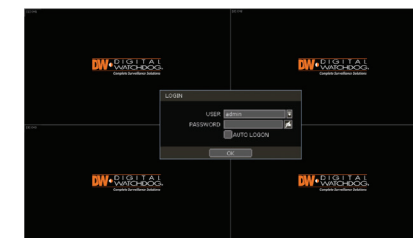


SAFETY TIPS

- During the boot up process, the module should not be interrupted by pressing any buttons on the mouse. Do not unplug the power adapter or turn the module off during the boot up process.
- A UPS (uninterrupted power supply) is highly recommended to prevent damage to the module during a power outage.

STEP 2 – POWERING UP THE SPOT MONITORING MODULE

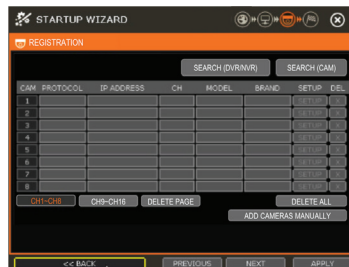
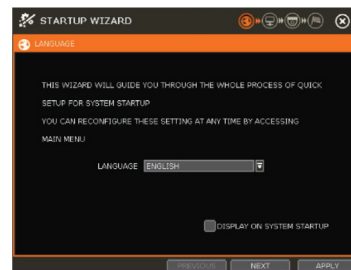
- When the module boots up, it will be in protective mode. This means you will not be able to access the module's setup menu until you enter the proper username and password.
- To unlock the module, right-click anywhere on the screen. The login screen will appear. (Default username / password: admin / no password)
- When the module boots up for the first time, you will be guided through the startup wizard.
- You can also access the Spot monitor for basic setup via its web browser.



NOTE: The Digital Watchdog spot monitoring module supports up to 16 supported devices registered, with single, quad and 16-channel view.

STEP 3 – STARTUP WIZARD

- Follow the startup wizard's instructions to setup the module's basic settings, including language, network and device search and registration. At any time you can skip steps, go back, or exit the wizard and setup the module manually.
- Language – Select the appropriate language from the drop-down menu options. Press 'Apply' to save and next to move to the next step.
- Set the module's network settings to match your network's requirements. It is recommended to set the network type to DHCP and let the module auto-detect the network's settings, then change the type to static. Please contact your network administrator for additional information. Press 'Apply' to save and next to move to the next step.



- Search and register all supported devices with the module. You can search for ONVIF conformant IP cameras or VMAX IP Plus™ NVR.
- The module's registration screen allows you to detect all the cameras in your network and automatically add them to the NVR. Select one of the following options:
 - DVR/NVR search – To search for VMAX IP Plus™ NVR:
 - Press the 'SEARCH (DVR/NVR)' button. The system will scan the network automatically. You can also press the SEARCH button to scan the network again.
 - Select the DVR/NVR you wish to register from the search results and press the 'GET INFO' button to obtain the device's streaming profile. DETAIL INFO allows you to get more information on the device's individual streams.
 - If necessary, enter the user ID and password for the device you are registering.
 - You can also select which channels from the DVR/NVR you wish to register.
 - Click 'APPLY' to register your device.

b. Camera search – To search for any ONVIF conformant IP camera:

- Press the 'SEARCH (CAM)' button. The system will scan the network automatically. You can also press the SEARCH button to scan the network again.
- Select the camera you wish to register from the search results and press the 'GET INFO' button to obtain the device's streaming profile. DETAIL INFO allows you to get more information on the device's individual streams and setup each of the camera's streams remotely.
- You can select multiple cameras by checking the 'CAMERA MULTI SELECT' button. Cameras selected will be highlighted in orange.
- If necessary, select the which stream from the camera to view (depend on camera's capabilities).
- If needed, enter the user ID and password for the device you are registering.
- Click 'APPLY' to register your device. Cameras will be registered in the order in which they appear. Cameras that are already registered will be shown in gray.



NOTE: Universal HD over Coax® VMAX® A1™ DVRs must be added MANUALLY using RTSP protocol.

STEP 4 – CONNECT THE MONITOR ON SITE

Once all the setup for the module is completed off site:

- Install the module in its permanent location.
- Connect the module to a proper power supply.
- Connect the module to a true HD or VGA monitor.
- Power up the module, and make sure the display setup is correct.

STEP 5 – SYSTEM OPERATIONS

Menu bar 

You can view the Spot monitoring module's menu bar by moving the cursor of a USB mouse over the bottom of the module's screen. The following options will appear:

- Open the system menu.
- View a selected channel in full screen mode.
- Switch to view mode.
- Start/stop sequence.
- Select a specific channel from the 16 registered channels.
- Power down the spot monitoring module.
- Pin the menu bar to keep it in view.

Pop-Up menu

When right-clicking on the module's display, the following options will appear:

- DISPLAY MODE: select the display option.
- CHANGE NEXT CH: show the next channel.
- SEQUENCE: start/stop sequence view.
- FREEZE: freeze the current view.
- SYSTEM STATUS: show the system status in real time.
- MENU: open the setup menu screen.

Display icons

For DVRs and NVRs, the spot monitoring module can show each channel's current status based on the settings in the DVR or NVR. When supported, some of the following icons may appear on the channel's display.

| Icon on Each Channel Screen | | Icon on Main Screen | |
|-----------------------------|-------------------------------|---------------------|-----------------------------|
| | Continuous Recording | | No HDD or HDD Failure |
| | Motion Recording | | Emergency Recording |
| | Sensor Recording | | PTZ Mode |
| | Continuous & Motion Recording | | Warning for Overheated Temp |
| | Continuous & Sensor Recording | | Sequence Mode |
| | Motion & Sensor Recording | | Digital Zoom Mode |
| | Sensor Activated | | |
| | Motion Activated | | |
| | Audio Channel | | |
| | PTZ Camera | | |

NOTE: Screen shots are for reference only. Actual GUI may differ.