

Compressor™

Analog to IP Video Encoder

DW-ENHD16



Default Login Information

Username: **admin** Password: **admin**

WHAT'S IN THE BOX

QSG Manual		1 Set	12V D/C & Power Cable		1 Set
------------	--	-------	-----------------------	--	-------

NOTE: Download All Your Support Materials and Tools in One Place

1. Go to: <http://www.digital-watchdog.com/support-download/>
2. Search your product by entering the part number in the "Search by Product" search bar. Results for applicable part numbers will populate automatically based on the part number you enter.
3. Click 'Search'. All supported materials, including manuals, Quick Start Guides (QSG), software and firmware will appear in the results.

Attention: This document is intended to serve as a quick reference for initial set-up. It is recommended that the user read the entire instruction manual for complete and proper installation and usage.

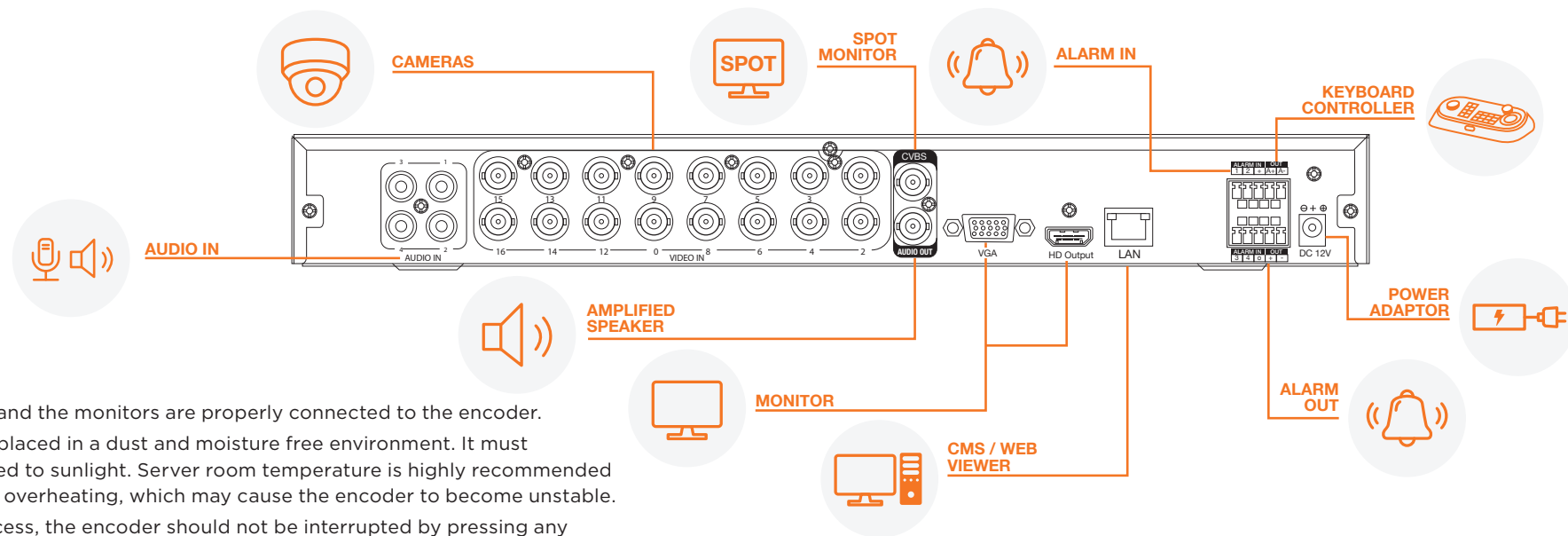
STEP 1 - CONNECTING THE ENCODER

1. Mount and install all necessary cameras and external devices. Refer to their individual manuals for additional information.
2. Place the encoder in its final position. See installation tips below.
3. Connect all necessary cables to the encoder.
4. Once all additional devices have been properly connected to the encoder, connect the encoder to an appropriate power supply. The encoder will boot up automatically.

Model	Power Consumption
DW-ENHD16	12V DC, 2A Max. 14.4W, 1.2A

STEP 2 - POWERING UP THE ENCODER

1. When the encoder boots up, it will be in protective mode. This means you will not be able to access the encoder's setup menu until you login using the proper username and password.
2. To unlock the encoder, right-click anywhere on the screen. The login screen will appear. (Default Username / Password: admin / admin)
3. When the encoder boots up for the first time, you will be guided through the Startup Wizard. It is highly recommended that you change your password after initial setup for security purposes.

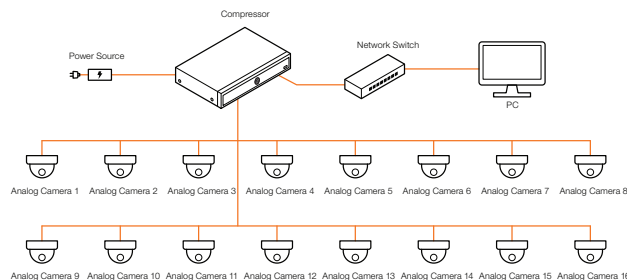


SAFETY TIPS

1. Make sure the cameras and the monitors are properly connected to the encoder.
2. The encoder should be placed in a dust and moisture free environment. It must never be directly exposed to sunlight. Server room temperature is highly recommended to reduce the chance of overheating, which may cause the encoder to become unstable.
3. During the boot up process, the encoder should not be interrupted by pressing any buttons on the mouse. Do not unplug the power adaptor or turn the encoder off during the boot up process.
4. A UPS (Uninterrupted Power Supply) is highly recommended to prevent damage to the encoder during a power outage.

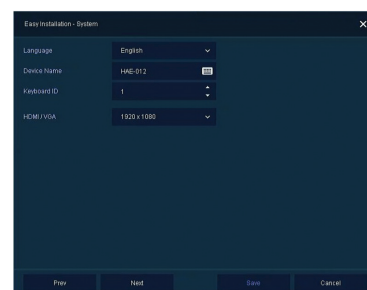
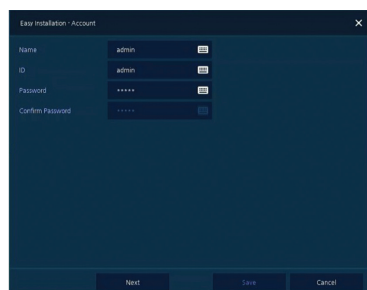
STEP 3 - COMPRESSOR CONNECTION EXAMPLE

- Below is an example of a proper connection between the Compressor, the cameras, and your remote monitoring software.

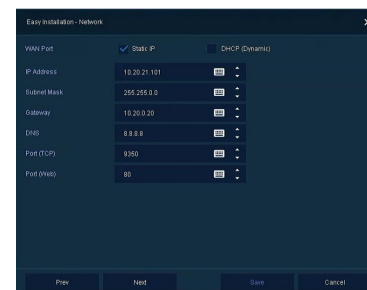


STEP 4 - STARTUP WIZARD

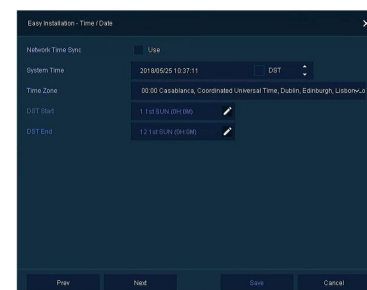
- Follow the startup wizard's instructions to setup the encoder's basic settings, setting up a new username and password, language and system settings, network settings and date/time settings. At any time you can skip steps, go back, or exit the wizard and setup the encoder manually.
- Account - Set a new username and password for the admin account. The default username and password are admin / admin, yet it is highly recommended that you change the password for security purposes. Press 'Save' and 'Next' to move to the next setup screen.
- System - In this screen, you can adjust the system's language, the name of the unit, adjust the ID connection for the unit (if you are connecting a keyboard), and adjust the resolution for both HDMI and VGA local outputs. Press 'Save' and 'Next' to move to the next setup screen.



- Set the encoder's network settings to match your network's requirements. It is recommended to set the network type to DHCP and let the encoder auto-detect the network's settings. Then, change the type to Static. Please contact your Network Administrator for additional information. Press Save and Next to move to the next step.



- Time/Date - Use this screen to set the encoder's date and time, including time zone, daylight savings and time sync. Confirm that the network box is checked. If needed, set the encoder to sync its time automatically with an external NTP server.

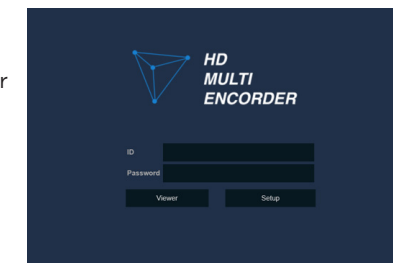


- Easy Installation - Check box to run Installation Wizard with every system start.
- Close dialog box when complete.

STEP 5 - WEB VIEWER

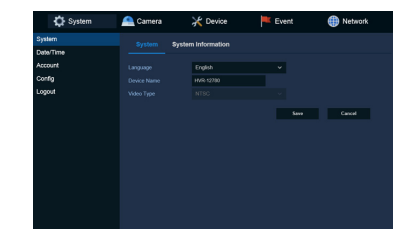
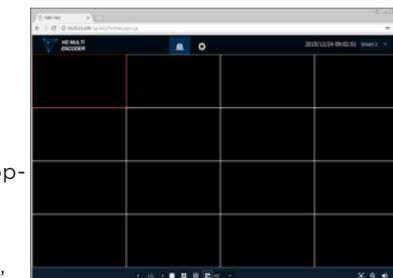
Once the encoder's network settings have been setup properly, you can access the encoder's web viewer for live monitoring and remote setup. To open the encoder's web viewer:

- Open a new web browser window and enter the encoder's IP address in the address bar. Press enter to proceed.
- Enter the encoder's user-name and password (default admin / admin). Select to go to the live viewer or the remote setup by pressing the corresponding button.



NOTE: It is highly recommended that you change the default admin user-name and password as soon as initial setup is completed.)

- If you wish to use the web interface for remote live viewing, download and install the Java from the pop-up window. Once the Java file is installed properly, the monitoring view will appear.
- If you are using the web interface for remote setup, press the setup button. The same setup window and options as in the local encoder will appear.



NOTE: Please see the full manual for additional installation options, connecting external devices, web viewer setup, camera settings and more.