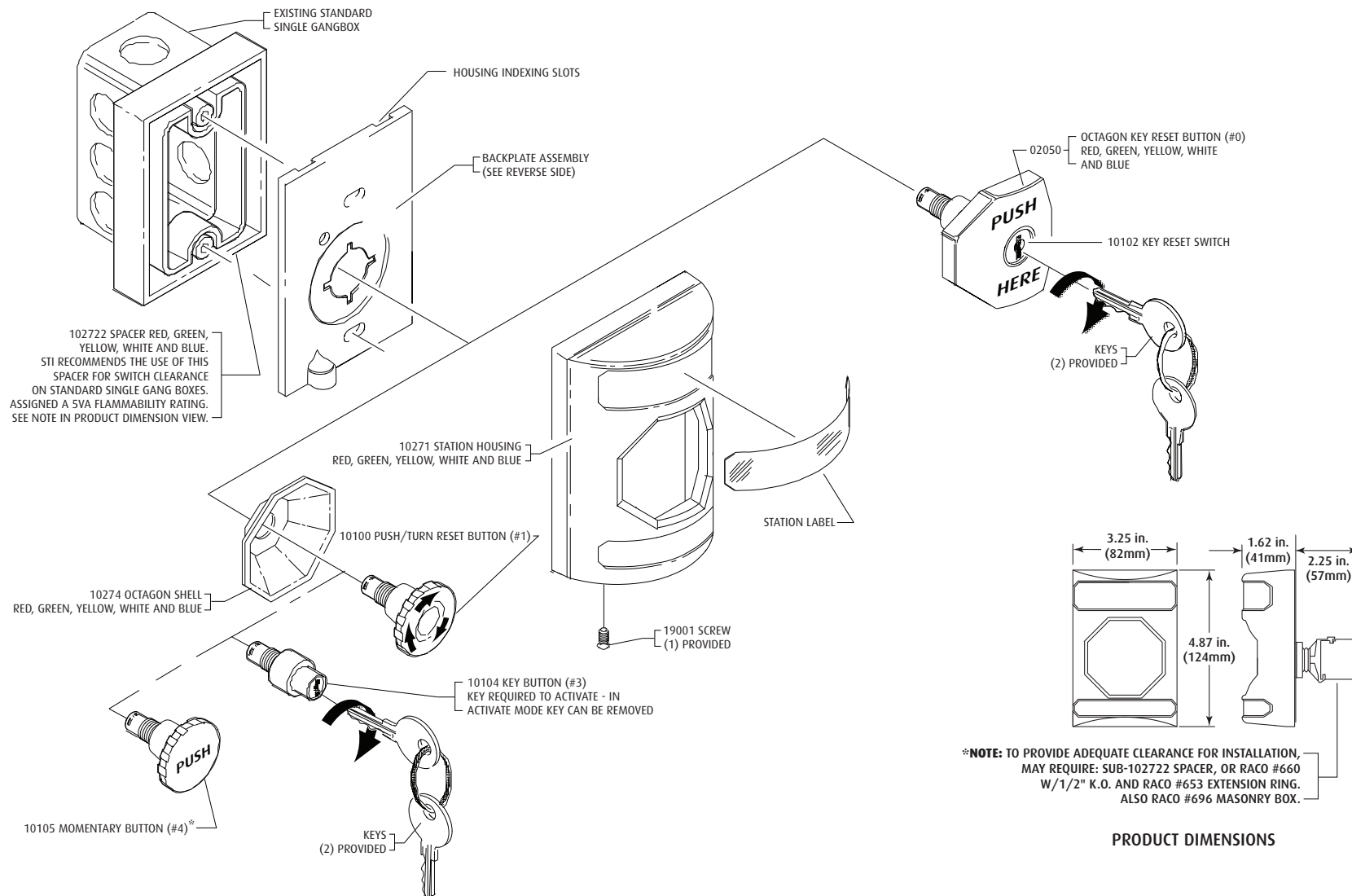




**Safety Technology International, Inc.**  
 2306 Airport Road • Waterford, Michigan 48327-1209  
 Phone: 248-673-9898 • Fax: 248-673-1246  
 Toll Free: 800-888-4784 • E-mail: info@sti-usa.com  
 Web: www.sti-usa.com

**Safety Technology International (Europe) Ltd.**  
 Unit 49G Pipers Road • Park Farm Industrial Estate • Redditch  
 Worcestershire • B98 0HU • England • Tel: 44 (0) 1527 520 999  
 Fax: 44 (0) 1527 501 999 • Freephone: 0800 085 1678 (UK only)  
 E-mail: info@sti-europe.com • Web: www.sti-europe.com



**\*SS-2\*\*4 and LT1-UL NOTES:** For access control installations, power for the LT-1UL Timer must be supplied by a power source listed to UL294. When used for access control, this device shall be used as part of an access controlled egress door system. It is up to the local AHJ to allow use of this device in place of an automatic sensor. For higher security installations, lower time limits should be used. For SS-2\*\*4 and LT1-UL the enclosed timer is to be used and installed per the enclosed LT-1UL installation sheet. \*SS-2\*\*4 and LT1-UL maximum rating 30 VDC 3A.

Electronic warranty form at [www.sti-usa.com/wc14](http://www.sti-usa.com/wc14)

## INSTALLATION OF SS-2000 SERIES STOPPER® STATION

All specifications and information shown were current as of publication, and are subject to change without notice.

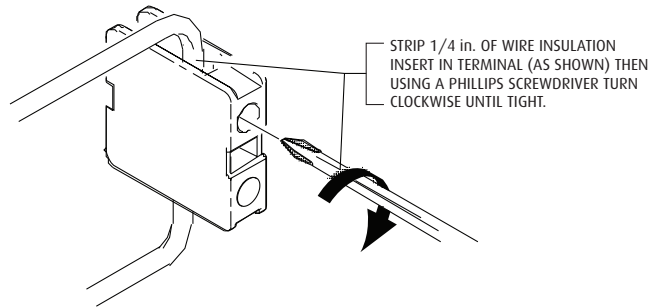
10271S MAY2011





**Safety Technology International, Inc.**  
2306 Airport Road • Waterford, Michigan 48327-1209  
Phone: 248-673-9898 • Fax: 248-673-1246  
Toll Free: 800-888-4784 • E-mail: info@sti-usa.com  
Web: www.sti-usa.com

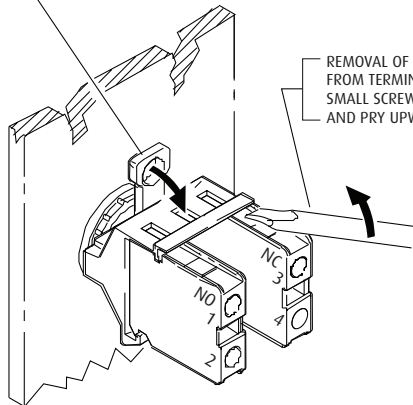
**Safety Technology International (Europe) Ltd.**  
Unit 49G Pipers Road • Park Farm Industrial Estate • Redditch  
Worcestershire • B98 0HU • England • Tel: 44 (0) 1527 520 999  
Fax: 44 (0) 1527 501 999 • Freephone: 0800 085 1678 (UK only)  
E-mail: info@sti-europe.com • Web: www.sti-europe.com



STRIP 1/4 in. OF WIRE INSULATION  
INSERT IN TERMINAL (AS SHOWN) THEN  
USING A PHILLIPS SCREWDRIVER TURN  
CLOCKWISE UNTIL TIGHT.

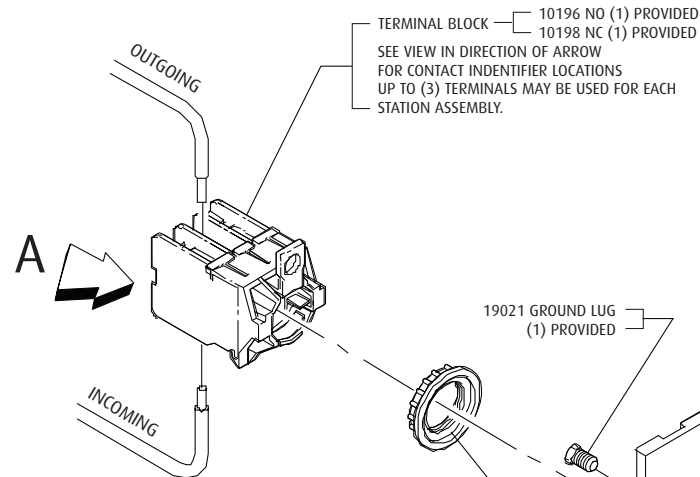
**VIEW IN DIRECTION OF ARROW A**  
**INSTALLATION OF ELECTRICAL**  
**WIRE INTO TERMINAL BLOCK**

SEPARATION OF TERMINAL ASSEMBLY  
FROM BUTTON ASSEMBLY IS AS FOLLOWS:  
GRASP TERMINAL HOUSING AND USING THUMB  
APPLY PRESSURE DOWNWARD, REMOVE TERMINAL.



REMOVAL OF TERMINAL BLOCK  
FROM TERMINAL HOUSING: INSERT  
SMALL SCREWDRIVER (AS SHOWN)  
AND PRY UPWARD, REMOVE TERMINAL.

**VIEW IN DIRECTION OF ARROW A**  
**INSTALLATION AND REMOVAL OF TERMINAL BLOCKS AND**  
**TERMINAL BLOCK ASSEMBLY FROM BUTTON ASSEMBLY**



TERMINAL BLOCK — 10196 NO (1) PROVIDED  
10198 NC (1) PROVIDED  
SEE VIEW IN DIRECTION OF ARROW  
FOR CONTACT IDENTIFIER LOCATIONS  
UP TO (3) TERMINALS MAY BE USED FOR EACH  
STATION ASSEMBLY.



INCOMING

OUTGOING

19021 GROUND LUG  
(1) PROVIDED

BUTTON LOCK NUT

19010 SCREWS #6-32 x 1  
OUTLET BOX (2) PROVIDED.  
SCREWS #6-32 x 1.50 WHEN  
USING 102722 SPACER  
(SEE REVERS SIDE).

TERMINAL BLOCK  
RELEASE LEVER  
MUST FACE UPWARD  
AS SHOWN FOR SWITCH  
TO FUNCTION CORRECTLY.

ELECTRICAL TERMINAL BLOCK  
UP TO 3 TERMINALS MAY BE USED

INSERT NOTCH, AS SHOWN  
THEN ROTATE UPWARD



10272 BACKPLATE  
GREEN, YELLOW, WHITE AND BLUE

#### TERMINAL BLOCK LEGEND

NO — NORMALLY OPEN  
NC — NORMALLY CLOSED  
C — COMMON

#### ALL TERMINALS ACCEPT TWO 12 TO 18 (AWG)

VOLTAGE	RATED AVERAGE CURRENT
250 VDC	1 AMP
600 VAC	3 AMP

NOTE: SS-2XX4/LT CONTACTS ON FORM C TIMER RATED: 120 VAC, 3A  
28 VDC, 3A

## INSTALLATION OF SS-2000 SERIES STOPPER® STATION

All specifications and information shown were current as of publication, and are subject to change without notice.

1027IS MAY2011