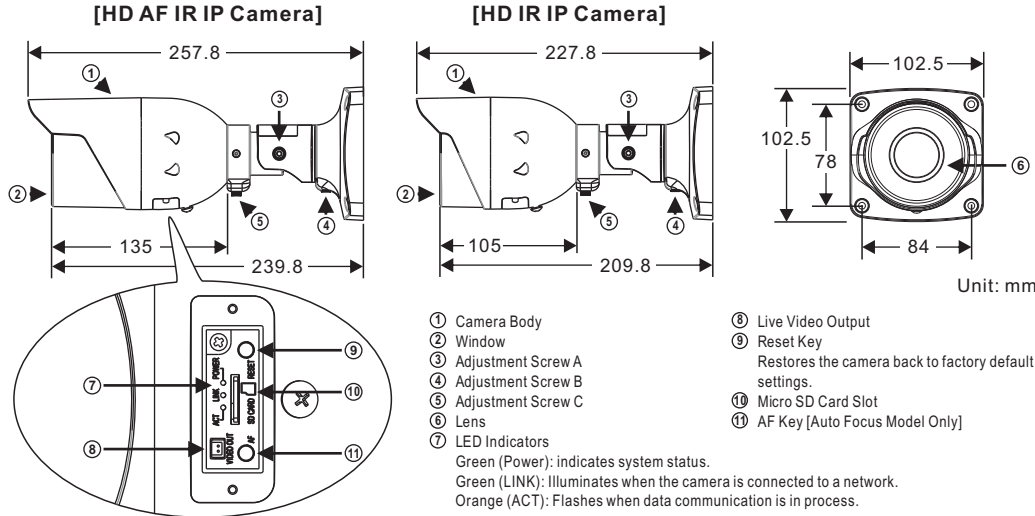




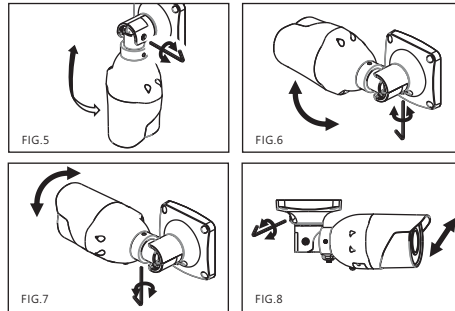
Warning: Do not throw your product in municipal waste. This product has been designed to enable proper reuse of parts and recycling. The symbol of the crossed out wheeled bin indicates that the product (electrical and electronic equipment) should not be placed in municipal waste. Check local regulation for disposal of electronics products.

Part Description & Dimensions



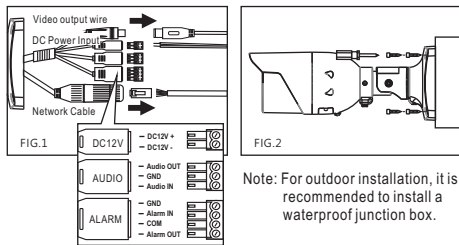
The IP camera will automatically adjust the camera lens to obtain focus after pressing the AF (Auto Focus) button continuously for 2 seconds. User can adjust the image view by using zoom in/out button via web access, and refocus using the Auto-Focus link on the main Web page.

2. Loosen the three adjustment screws on the bracket to change the camera direction according to different needs before according to different needs. Be sure to tighten the screws after the adjustment is completed (FIG.5-8).

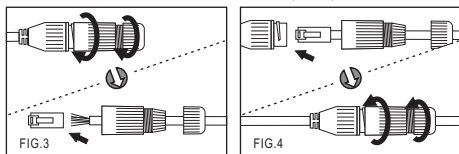


Installation

1. Remove the camera from the Box. Connect the Ethernet cable, video cable, and power cable to the camera's RJ-45 network connector, video output connector respectively, and DC power-in connector (FIG.1). Secure the camera to the wall (FIG.2).

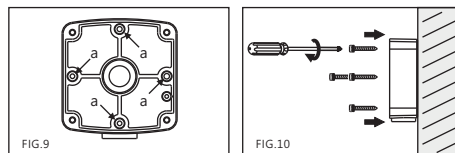


● Connect the RJ-45 Ethernet cable with a waterproof connector
First, remove the waterproof connector and unscrew the waterproof nut. Insert the Ethernet cable and connect to the RJ-45 connector with proper tools (FIG.3). Then, tighten the waterproof connector and nut before the RJ-45 connector is connected to the camera (FIG.4).

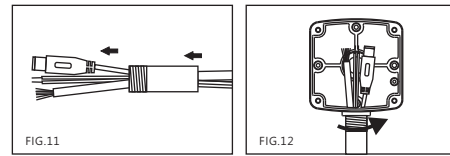


Install the Camera with a Junction Box (Optional)

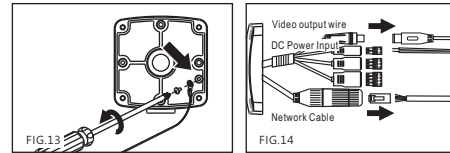
A. Choose a desired position for the junction box, and secure the truss head screws enclosed in the box to the holes marked as "a" (FIG.9 & 10) on the junction box.



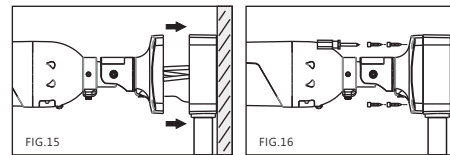
B. Insert the Ethernet cable, video cable, and power cable through the 1/2" PT tube (FIG.11), and rotate to secure the tube to the holes on the lateral or bottom of the junction box (FIG.12). The conjunction between the tube and the hole must be airtight, and the opening of the hole must point downward.



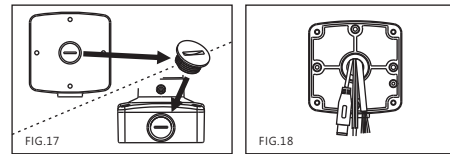
C. Attach the safety cable to the hole at the bottom of the junction box (FIG.13), and connect the Ethernet cable, video cable, and power cable to the camera's RJ-45 connector, video output, and power input respectively (FIG.14). Please refer to "1." For more wiring instructions.



C. Use the screws (M5.0x12L) included in the box to secure the camera to the junction box, and tighten the screws (FIG.15&16).



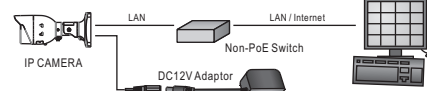
● Change the Outlet Position for the Ethernet and Power Cables
1. Loosen the threaded plug at the bottom of the junction box and secure it to the lateral hole (FIG.17).
2. Insert the Ethernet cable, video cable, and power cable through the opening at the bottom of the junction box (FIG.18) and connect them to the camera's RJ-45 connector, video output, and power input respectively



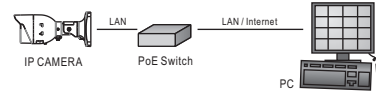
System Architectures

For connecting IP Camera series to the network, please follow one of the system architectures:

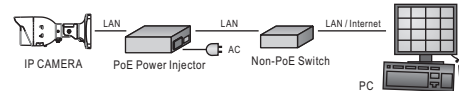
(1). Use DC12V power adaptor and network switch connected to a network.



(2). Use with PoE of the network switch connected to the network.



(3). Use PoE power injector and the network switch connected to the network.



Before Accessing IP Cameras

Before accessing the IP camera, make sure that the camera's RJ-45 network, audio, and power cables are properly connected. To set the IP address, consult

your network administrator for an available IP address. The default IP address for each IP camera is 192.168.0.200. Users can use the default IP address for verifying the camera's network connection.

Emergency Factory Default

To restore the hardware to factory default settings, please follow these steps:

1. Press and hold "RESET Key" for 10 seconds and release.
 2. Wait for about 40 seconds, and the network LED light should turn off, and go back on again.
 3. The camera is now restored to factory default settings, and will reboot automatically.
 4. Search for the IP device using the IPScan software.
 5. Start the IP device via an Internet browser.
 6. Enter the username and password to operate.
- NOTE1:** The factory default username and password are empty, and the user can set an account for login.
NOTE2: The IP address will revert to the default setting of 192.168.0.200.

Software Requirements

Universal ActiveX software components are required for web interface display of JPEG or Full HD video. When you login to the IP camera by Internet Explorer, the security warning dialog box will prompt the installation of the Universal ActiveX. Click **Install** to download it.

Configuring IP Addresses via Web Interface

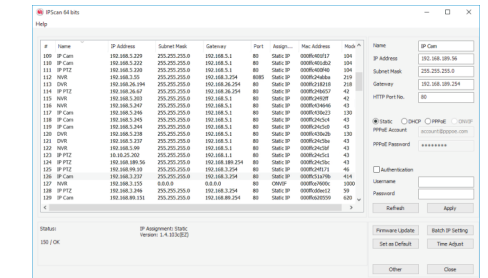
To change an IP address via web interface, type the default IP address (192.168.0.200) in the Internet browser and follow the steps below:

1. Login to the HD IP camera with the set username and password.
2. Click **Basic Mode** configuration hyperlink.
3. Click **Network->General** hyperlink.
4. Change the IP address, subnet mask, gateway, or HTTP port for the IP camera.
5. Click **Submit** to verify the settings.

Configuring IP Addresses with IPScan Software

To change the settings of the IP address, subnet mask, gateway, or HTTP port, you can follow the steps below:

1. Run the IPScan software.
2. Click **Refresh**. All available devices should be listed in the device list.
3. Select your device from the list provided.
4. Change the IP address, subnet mask, gateway, or HTTP port for the IP camera.
5. Click **Apply** to submit the settings.
6. Click **Refresh** to verify the settings.



Login

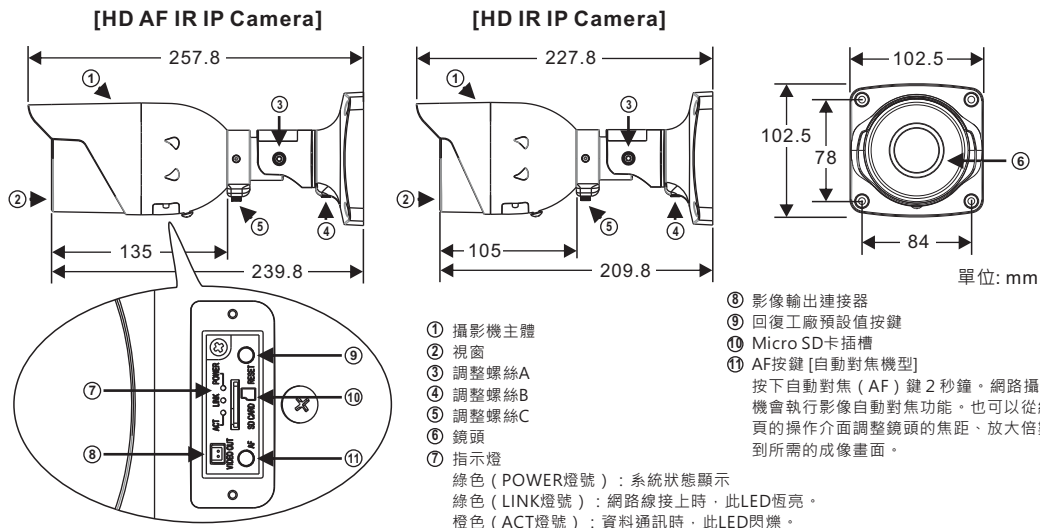
The factory default username and password are empty. To login to the Full HD IP camera, please set the username and password on the login page. Press [Login] to complete the setting and login simultaneously.



Password have to meet the following criteria:

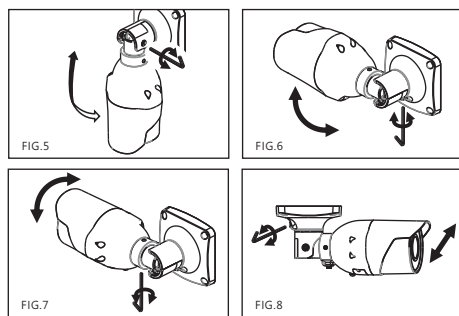
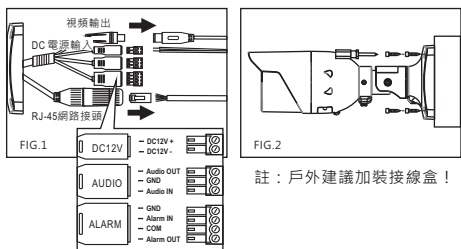
1. More than or equal to 8 characters.
2. Allow uppercase letter, lowercase letter, number digit, and special character.
3. Must have at least three types of character sets.

部件說明及尺寸



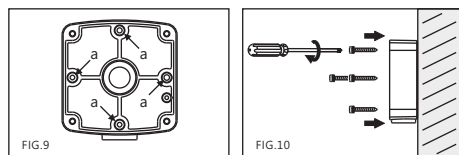
安裝

- 首先取出網路攝影機，把網路線、視頻電纜及電源分別接上網路攝影機的RJ-45網路接頭、視頻輸出及DC電源輸入接頭 (FIG.1)；並將攝影機固定在牆上 (FIG.2)。



使用接線盒安裝網路攝影機 (接線盒為選配)

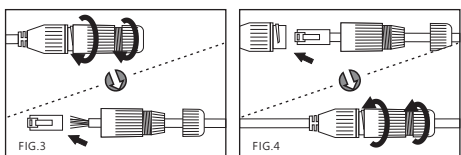
- 使用所附的傘頭螺絲穿過標示為「a」的接線盒底座的固定孔 (FIG.9 & FIG.10)，將底座固定在所需的地方。



- 將網路線、視頻電纜和電源線穿過1/2" PT管子 (FIG.11)，再將管子旋入底座的側孔或底孔 (FIG.12)，管子與側孔兩者之間的結合，必須是防水的；同時側孔也必須在下方)。

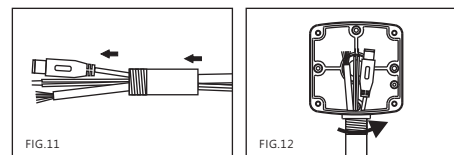
- 搭配防水接頭連接RJ-45網路線

首先將防水接頭取下，並將防水螺帽旋開；穿過網路線後再使用工具連接RJ-45接頭 (FIG.3)。將RJ-45接頭連接至網路攝影機，再依序將防水接頭、防水螺帽旋緊 (FIG.4)。

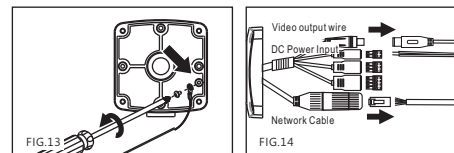


- 依需求調整腳架上的三個調整螺絲，轉動攝影機主體到所需的攝影角度後，再將其調整螺絲鎖緊 (FIG.5~FIG.8)。

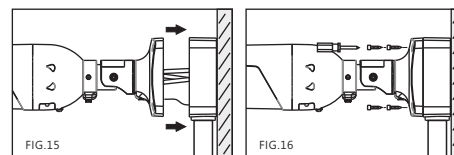
警告：此圖示，指在廢棄產品時不可直接丟棄廢棄桶，應進行拆解，並分類進行回收再利用。



- 先將安全鎖鎖附到接線盒底座的固定孔上 (FIG.13)，再把網路電纜和電源線接上攝影機的RJ-45網路插座、視頻輸出及電源輸入端 (FIG.14)。

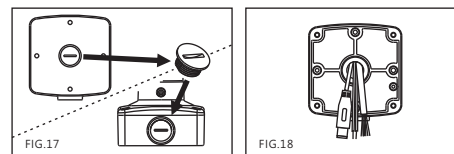


- 使用所附的螺絲 (M5.0x12L) 將攝影機鎖附到接線盒底座上，並鎖緊螺絲 (FIG.15 & FIG.16)。



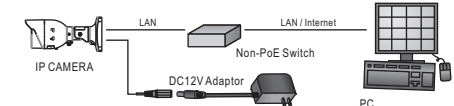
- 變更網路電纜和電源線的出線位置

- 轉鬆取下接線盒底座的孔塞，再將其鎖緊在側孔上 (FIG.17)。
 - 把網路線、視頻電纜和電源線穿過接線盒底座的底孔 (FIG.18)，然後將其連接到攝影機的RJ-45網路插座、視頻輸出及電源輸入端 (線組安裝請參閱第1項的說明)。

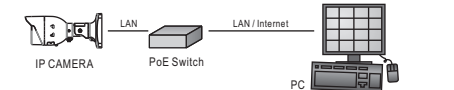


系統架構

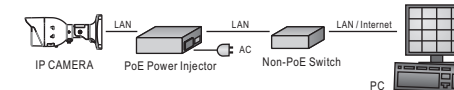
- 請依據下列其中一種系統架構，連結高畫質網路攝影機和您的網路 (1) 使用DC12V電源變壓器和網路交換器連接網路。



- 使用配備 PoE 的網路交換器連接網路。



- 使用 PoE 供電裝置 (Power Injector) 和網路交換器連接網路。



安裝前準備

在使用 HD IP 攝影機之前，請先確認攝影機 RJ-45 網路接頭和電源接頭是否接受，並請網管人員提供一組未經使用的 IP 位址。出廠出廠預設 IP 位址為 192.168.0.200，使用者可以先行使用該 IP 位址去更改相關網路設定。

回復出廠預設值

使用硬體來回復出廠預設值，請按照下列步驟：

1. 按住「回復出廠預設值按鍵」10 秒鐘。
2. 約40秒鐘後網路連接 LED 燈將熄滅再點亮。
3. 網路伺服器將重新開機。
4. 使用 IPScan 軟體搜尋此 IP 設備。
5. 使用網路瀏覽器開啟此 IP 設備。

6. 輸入預設使用者名稱及密碼進行操作。

註1：出廠預設的使用者名稱和密碼為空白，由使用者自行設定輸入
註2：為方便使用者起見，回復出廠預設值會回復到預設 IP 位址 192.168.0.200。

軟體需求

HD 網路攝影機需要軟體解壓縮器顯示影像，HD 網路攝影機的網頁介面需使用該軟體。當您第一次登錄本產品，HD 網路攝影機的網頁介面會自動安裝 Universal ActiveX 元件，請按下「安裝」鍵安裝該元件。

使用 HTML 頁面來設定 IP 位址

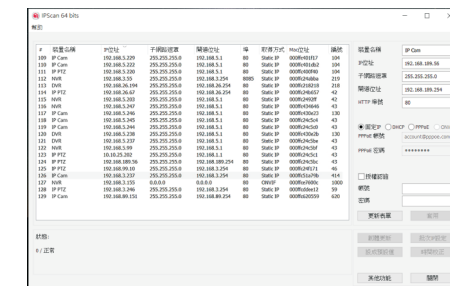
請先在網路瀏覽器網址列，輸入預設 IP 位址 192.168.0.200，並按照下列步驟執行，使用 HTML 頁面來更改 IP 位址：

1. 設定使用者名稱及密碼，登錄 HD IP 攝影機
2. 按「組態設定」超連結
3. 按「網路設定」、「一般設定」超連結
4. 輸入或修改 IP 位址、子網路遮罩、網路閘道 (Gateway) 或 HTTP 連接埠
5. 按「確認」鍵，完成上述修改

使用 IPScan 軟體工具來設定 IP 位址

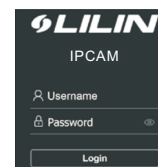
您可以使用 IPScan (網路設備搜尋軟體) 工具來設定 IP 位址。要更改 IP 位址、子網路遮罩、網路閘道、或 HTTP 連接埠，請參照下列步驟：

1. 執行 IPScan 軟體工具
2. 按「更新表單」鍵，區域網路內的所有設備將顯示在設備清單欄位
3. 用滑鼠點選該設備
4. 編輯或修改該設備之 IP 位址、子網路遮罩、網路閘道 (Gateway) 或 HTTP 連接埠等欄位
5. 按「套用」鍵來更改該設定
6. 按「更新表單」鍵來驗證該設定



登入

出廠預設的使用者名稱和密碼為空白，欲登入 HD 網路攝影機，請在登入頁面，設定使用者名稱及密碼並按下確認鍵，可同時完成使用者設定並登入。



- 密碼強度要求：
1. 密碼長度需要8個字以上。
 2. 密碼必須包含英文文字大寫、小寫、數字及特殊符號。
 3. 密碼必須強制使用至少3種文字型態。