



COMMUNICATIONS FOR TODAY ... AND TOMORROW.

CM800 Emergency Call System

Submittal Package

as of 6/1/21

www.tektone.com

Phone: 828.524.9967
Toll-Free: 800.327.8466
Sales: Option 2
Tech Support: Option 3

324 Industrial Park Road
Franklin, NC 28734
tektone@tektone.com
Fax: 828.524.9968

Copyright © 2021 TekTone® Sound & Signal Mfg., Inc., All rights reserved.

No part of these publications may be copied without the express written permission of TekTone® Sound & Signal Mfg., Inc. The contents of these specification sheets are furnished for informational use only, are subject to change without notice, and should not be construed as a commitment by TekTone® Sound & Signal Mfg., Inc. TekTone® Sound & Signal Mfg., Inc. assumes no responsibility or liability for any errors or inaccuracies that may appear in this documentation.

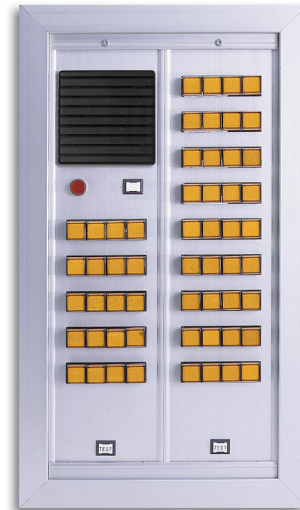
TekTone, the TekTone logo, Tek-ALERT, Tek-BRIDGE, Tek-CALL, Tek-CARE, TekCD, Tek-CHECK-IN, Tek-COM, Tek-ENTRY, Tek-GUARD, Tek-MICRO, Tek-MMARS, Tek-PAGING, Tek-SAFE and Tek-STATUS are either registered trademarks or trademarks of TekTone® Sound & Signal Mfg., Inc. in the United States and/or other countries. All other trademarks are the property of their respective owners.

Features

- Modular design
- Protected markings
- Multiple use
- Up to 4 digits per lamp
- Vertical or horizontal mounting

Description

The CM800-series Annunciators are modular panels, permitting use in systems requiring from 16 to 344 annunciator lamps. The CM800 is suitable for use in emergency call, security alarm, services monitoring, and similar applications where visual and audible annunciation is required. (If audible indication is not needed, specify when ordering.) Identification markings are easily applied by dry transfer letter method or label maker.



**CM800/20 Annunciator
with AM800/36 Add-on Panel and OF202 Frame**

Specifications

Power Required: 16 to 24 VAC or VDC

Connections: Screw terminals

Housings: Flush mounting, OH200
Surface mounting, OH300

Lamps available only in multiples of four.

Required Components

CM800-series Speaker Panel
AM800-series Add-On Panel
PK2019A Power & Control Unit
SS106 Transformer

Housing and Frame Chart for CM800

Number of Lamps	Width		Width		Width		Width	
	Flush	Cut-Out	Surface	Overall	Frame	Overall	Desk	Width
4 - 20	OH201	4-1/2"	OH301	6-1/8"	OF201	6-1/4"	IH302	9-1/2"
24 - 56	OH202	8-1/2"	OH302	10-1/8"	OF202	10-1/4"	IH302	9-1/2"
60 - 92	OH203	12-1/2"	OH303	14-1/8"	OF203	14-1/4"	IH303	13-1/2"
96 - 128	OH204	16-1/2"	OH304	18-1/8"	OF204	18-1/4"	IH304	17-1/2"
132 - 164	OH205	20-1/2"	OH305	22-1/8"	OF205	22-1/4"	IH305	21-1/2"
168 - 200	OH206	24-1/2"	OH306	26-1/8"	OF206	26-1/4"	IH306	25-1/2"

IH300 Series desk cabinets height: 6".....depth: 17"
OH200 Series wall cut-out height: 16-1/4".....depth: 3-7/8"
OH300 Series overall height: 17-3/4".....depth: 3-5/8"
OF200 Series overall height: 17-3/4".....depth: 2-1/2"

Description

The BE007 DC Corridor Bell is for use in general alarm applications and is UL® Listed.

The corridor bell produces a long, continuous ringing sound and features low power drain and shockproof construction. The corridor bell is supplied complete with plate and is ideally suited for general alarm applications of medium ambient level.

Specifications

Bell Size:	6"
Diameter:	6"
Depth:	2.875"
Amps:	0.062
VA:	1.5
dB at 10':	92



BE007 DC Corridor Bell

Required Components

CM800 Emergency Call System
SF117-series or SF118-series Emergency Call Stations
PK601A DC Power Supply
SS106 Transformer

Features

- Automatic tone-off reset
- Reliable and rugged design

Description

The IR019B Remote Tone Speaker provides remote tone annunciation when connected directly to a PK2019A Power & Control Unit, and in parallel with a TekTone® CM800-series or DS100-series Annunciator Panel.

The tone speaker features a momentary contact tone-off button for tone silencing. Depressing the tone-off button silences the tone at all IR019B locations. The tone-off light remains illuminated while tone-silencing is enabled. When the emergency initiating device has been reset, the tone-off will automatically reset.

Specifications

Dimensions:	Height:	4.5" (115 mm)
	Width:	4.5" (115 mm)
Finish:	Satin brushed stainless steel	
Controls:	Individual replaceable push button with self-wiping contacts	
Indicators:	28 volt red light	
Speaker/Mic:	45-ohms, 2.5"	
Connections:	Pigtails	
Housing:	Standard 2-gang electrical box	

Required Components

CM800 Emergency Call System

-or-

DS100 Door Sentry & Emergency Alarm System

PK2019A Power & Control Unit

SS106 Transformer



IR019B Remote Tone Speaker

Features

- Excellent visibility
- Audible call indication
- Easy bulb replacement
- Durable construction

Description

The LI118B and LI123B Corridor Lights provide both visual and audible indication of any type of call. Models may be used with an emergency call system or in any application where this type of call indication is needed.

The standard mounting plate accommodates both models and features an easily removable white translucent cover for bulb replacement.

Specifications

Dimensions:	Height:	5"	(127 mm)
	Width:	6.75"	(171 mm)
	Depth:	4.5"	(117 mm)
Bulb:	Type 1829, 28V, min. BAY		
AC Buzzer:	Type 123A-G5, 24 VAC, 160 mA		
DC Buzzer:	Type 118-G1, 24 VDC, 40 mA		
Power:	LI118B:	24 VDC, 80 mA	
	LI123B:	24 VAC, 200 mA	
Finish:	Translucent white plastic cover mounted on a flame retardant, (UL [®] 94V-0) plastic panel.		
Mounting:	Fits standard dual gang box and ring. Minimum depth of box must be no less than 1.75".		



LI118B, LI123B Corridor Lights

Required Components

CM800 Emergency Call System

LI381 Corridor Light & LI382 Corridor Zone Light IL518 Specification Sheet

Tek-CARE® Nurse Call & CM800 Emergency Call Systems • Rev. 21 - 01/2017

Features

- UL® 1069 Listed
- Snap-in lens
- Easy bulb replacement
- Attractive flame-retardant HIPS30 plastic panel
- Excellent visibility

Description

The LI381 Corridor Light and LI382 Corridor Zone Light provide visual indication of calls when used with a nurse call system, emergency call system, or similar application. Emergency calls are indicated by the rapid flashing of the LI381 Corridor Light associated with the calling station. Normal calls produce a steady illumination.

The LI382 Corridor Zone Light indicates an emergency call by the rapid flashing of the red-covered bulb associated with the zone or area from which an emergency call has been placed. Normal calls are indicated by a steady illumination of the white bulb. If an emergency and normal call are placed in the same zone at the same time, the red covered bulb connected to the emergency station will flash rapidly, while the white bulb associated with the normal call will maintain a steady illumination.

The standard mounting plate accommodates both models and features an easily removable white flame-retardant translucent polystyrene plastic lens for bulb replacement.

Listings



UL® 1069 listed; UL® File Number E71599.



LI381 Corridor Light & LI382 Corridor Zone Light

Specifications

Dimensions:	Height:	4.5625"	(115 mm)
	Width:	4.5625"	(115 mm)
	Depth:	3.3"	(84 mm)
Bulbs:	#1829 28V 70 mA		
Power:	LI381:	24 VDC or VAC, 51mA	
	LI382:	24 VDC or VAC, 102mA	
Finish:	White flame-retardant translucent polystyrene plastic lens mounted on a flame-retardant (UL® 94V-0) plastic panel.		
Housing:	Fits either standard dual gang box and ring or single gang box and ring.		

Applicable Systems

Tek-CARE® NC110, NC150, NC200 or NC300II Nurse Call System

Tek-CARE®500 Wireless Emergency Call System with NC50xES-series remote receiver
CM800 Emergency Call System

www.tektone.com

324 Industrial Park Road • Franklin, NC 28734 • tektone@tektone.net

Phone: 828.524.9967 • Fax: 828.524.9968 • Sales: Choose option 2 • Tech Support: Choose option 3
TekTone's quality system is registered by DQS to the ISO 9001 standard. (Reference #10001510.)

Features

- Long lasting LEDs
- No bulb replacement needed
- Plug-in connector supplied
- Attractive flame-retardant plastic panel

Description

The LI382LED Corridor Zone Light provides visual indication of calls when used with a nurse call system, emergency call system, or similar application.

The LI382LED Corridor Zone Light indicates an emergency call by the rapid flashing of the two red LED bulbs associated with the zone or area from which an emergency call has been placed. Normal calls are indicated by a steady illumination of the two white LEDs. If an emergency and normal call are placed in the same zone at the same time, the red LEDs connected to the emergency station will flash rapidly, while the white LEDs associated with the normal call will maintain a steady illumination.

The standard mounting plate features both one- and two-gang mounting options.

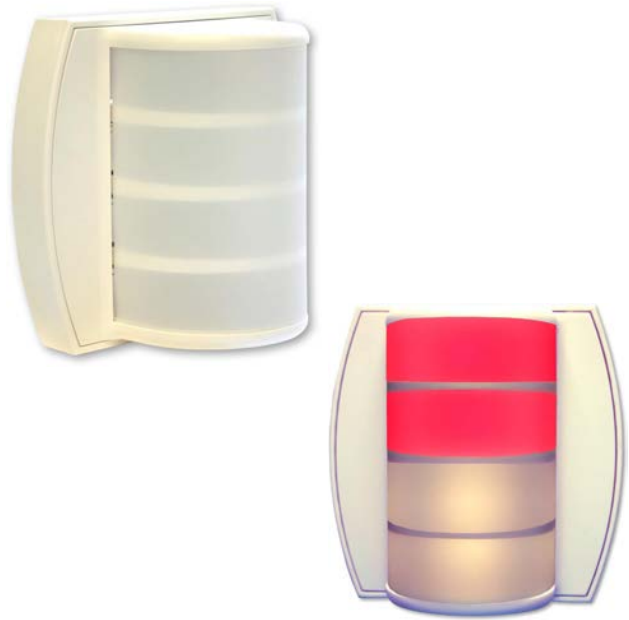
Listings



UL® 1069 Listed; UL® File Number E71599.

Specifications

Dimensions:	4.8"H × 5.0"W × 2.75"D (122 mm × 127 mm × 70 mm)
LEDs:	2V 20mA per LED
Power:	24 VDC
Finish:	Base is flame-retardant (UL® 94HB) plastic. Lens is flame-retardant translucent polycarbonate plastic.
Housing:	Fits standard one- or two-gang box with one- or two-gang ring.



LI382LED Corridor Zone Light

Required Components

Tek-CARE® NC110, NC150, NC200 or 300II Nurse Call System
Tek-CARE®500 Wireless Nurse Call System with NC50xES-series remote receiver
CM800 Emergency Call System with CM800-series speaker panel

Features

- Single-gang mounting
- 2 or 4 pole switches
- Attractive, flame-retardant (UL 94V-0) plastic panel
- Highly visible emergency labeling
- May use with central annunciator, or for local alarm functions

Description

The SF117-series Emergency Call Switch is available in two models and features a rugged, long-life, positive-acting switch mounted on a durable flame-retardant (UL® 94V-0) plastic panel. Signaling an emergency requires just a short pull in any direction on the 6' long nylon cord. The signal cannot be canceled except at the point of origin. The SF117/2C provides two circuits to operate a separate visual and audible signal. The SF117/4C provides two additional circuits that may be used to operate additional signaling devices as needed.

Specifications

Dimensions:	4.5" × 2.75" × 1.5" (114 mm × 70 mm × 38 mm)
Panel:	Flame-retardant (UL94V-0) plastic
Switch:	SF117/2C: DPDT SF117/4C: 4PDT
Connections:	Wire leads
Mounting:	Standard single-gang electrical box
Legend:	Pad-printed EMERGENCY



SF117/2C, SF117/4C Emergency Switch

Required Components

Standalone:
SS106 Transformer
LI381 or LI123B Corridor Dome Light

System:
CM800 Emergency Call System

Features

- Call-placed indicator
- Call cancellation only at point of origin
- Attractive, flame retardant (UL[®] 94V-0) plastic faceplate
- Contacts to signal dome light, and buzzer or bell

Description

The SF118C Emergency Switch is available in two models. The SF118/2C provides two contacts, one to signal a dome light and master station, and one to signal a buzzer or DC bell. The SF118/4C provides two additional contacts that may be used to operate additional signaling devices as needed.

Both models feature a rugged, long-life, positive-acting switch mounted on an attractive, flame retardant (UL[®] 94V-0) plastic faceplate marked **EMERGENCY** that includes a red LED. Signaling an emergency requires just a short pull in any direction on the 6' long nylon cord. The signal cannot be canceled except at the point of origin.



SF118/2C, SF118/4C Emergency Call Station

Specifications

Dimensions:	Height: 4.5" (114 mm)
	Width: 2.75" (70 mm)
	Depth: 1.5" (38 mm)
Switch:	SF118/2C: 2 PDT
	SF118/4C: 4 PDT
Construction:	Switch and lamp are mounted to an attractive, flame retardant (UL [®] 94V-0) plastic faceplate.
Call-Placed Light:	Red LED.
Connections:	Wire leads.
Mounting:	Standard single-gang electrical box.

Required Components

CM800 Emergency Call System

Features

- Simple operation and installation
- Attractive, flame retardant (UL® 94V-0) plastic panel
- Fits standard single-gang electrical box
- Visual indication of activation

Description

The SF154B Emergency Call Switch features a push button switch with DPDT (double-pole double-throw) contacts which are available via wire pigtail. The switch comes pre-wired with both normally open terminals available individually.

The switch has a mechanical eye arrangement inside, which provides for positive indication of activation without the need for external power. The switch features push-on push-off operation. The SF154B is designed as a single-gang (UL® 94V-0) plastic panel that fits a standard single-gang electrical box.



SF154B Emergency Call Switch

Specifications

Dimensions:	Height:	4.5"	(115 mm)
	Width:	2.8125"	(72 mm)
	Depth:	1.5"	(39 mm)
	Projects:	0.8125"	(21 mm)
		(From mounting surface)	
Construction:	Flame retardant (UL® 94V-0) plastic		
Housing:	Single-gang ring or box.		

Required Components

CM800 Emergency Call
LI381 Corridor Light
SS106 Transformer

Description

The TekTone® PK2019A Power & Control Unit is a general purpose power & control unit used with the CM800 Emergency Call System and the DS100 Door Sentry & Emergency Alarm System.

The PK2019A provides tone signal, tone silencing, tone-silenced indication, auxiliary signal relay, and 24 VDC for accessory device operation. The PK2019A also provides three levels of tone volume control.

Specifications

Dimensions: Height: 5.5" (140 mm)
Width: 3.125" (80 mm)
Depth: 2.0" (51 mm)

Power Required: 16 VAC 30 VA max.

Output Current: 1 Amp. maximum

Tone Speaker: 45 ohms (up to 3 in parallel)

Tone-Off Lamp: 0.04 Amp. (up to 3 in parallel)

Connections: Plug-in

Construction: Flame-retardant (UL® 94V-0) plastic

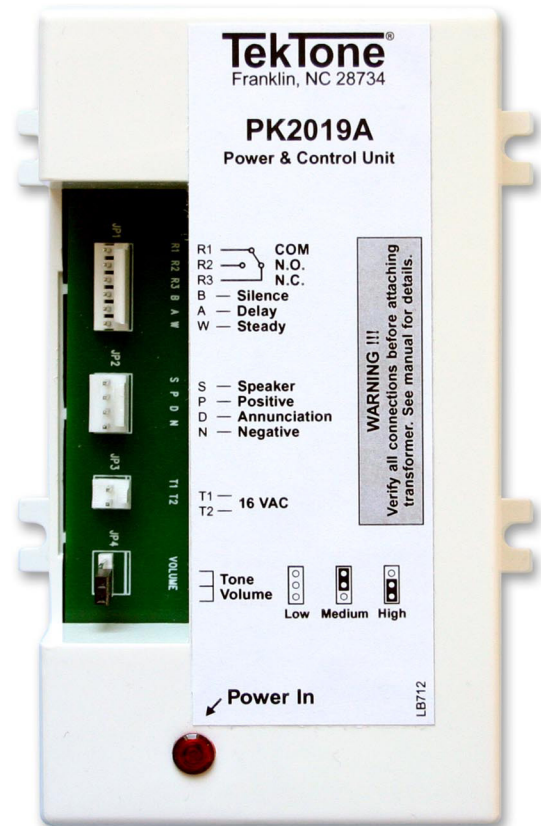
Required Components

CM800 Emergency Call System

-or-

DS100 Door Sentry & Emergency Alarm System

SS106 Transformer



PK2019A Power & Control Unit

Features

- Low voltage operation
- Reliable alternate power supply
- Integrated circuit design
- Easy installation

Description

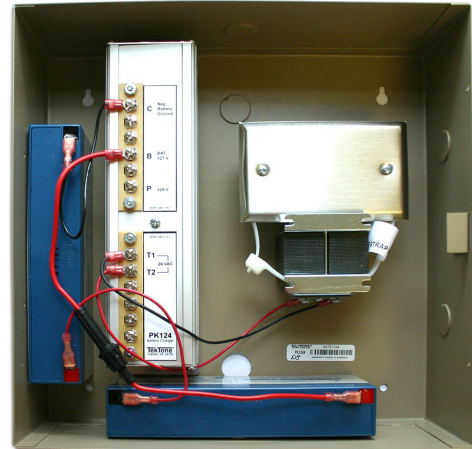
The PK124K Battery Backup Kit provides continuous battery charging so that if power to system equipment is interrupted, standby operating power is provided for up to approximately 6 hours. (Time may vary depending on system size and usage.)

The PK124K kit includes a transformer, a battery charger and two batteries—all preinstalled in a 19-gauge cold-rolled steel housing. Knockouts are included on all sides except the lid, to allow connection of electrical conduit from any direction. In addition, the lid has a knockout which can be used to install an optional key lock. The enclosed single-gang electrical junction box is galvanized steel with a stainless steel cover plate.

TekTone® systems supported by the PK124K include the DS100 Door Sentry & Emergency Alarm System, the CM800 Emergency Call System, Tek-ENTRY® Apartment Entry Systems, and the Tek-SAFE® Area of Rescue Assistance System.

Specifications

Dimensions:	Height:	11.75"	(300 mm)
	Width:	11.75"	(300 mm)
	Depth:	3.75"	(96 mm)
Construction:	19 gauge, cold-rolled steel		
Transformer:	24 VAC, 30 VA (SS106)		
Storage:	Two 12 VDC batteries (BA001)		
Connection:	Screw terminals (on PK124)		
Mounting:	Surface		



PK124K Battery Backup Kit

Required Components

CM800 Emergency Call System
DS100 Door Sentry & Emergency Alarm System
Tek-ENTRY® Apartment Entry Systems
-or-
Tek-SAFE® Area of Rescue Assistance System

Optional Components

Mier BW3000 Offset Cam Lock, or equivalent

SS102A and SS106 Transformers PO001 Electric Door Opener IL127 Specification Sheet

Rev. 15 - 10/2016



SS102A



SS106

SS102A and SS106 Transformers



PO001 Electric Door Opener

Transformer Features

TekTone's SS102A and SS106 Class 2 Transformers offer compact, easy-to-install low voltage AC power sources for use with various TekTone® intercom systems. Both transformers are UL® Listed Class 2 transformers and will safely take themselves offline when overheated.

The transformers are constructed for easy surface installation or in a standard 1/2" knockout, and may be used in plastic or metal boxes. Primary wire connections are made using the pre-stripped pigtailed and ground wire; secondary connections are made using screw terminals.

Specifications

SS102A	120 VAC primary, 16 VAC 10 VA secondary
SS106	120 VAC primary, 8 VAC 20 VA 16/24 VAC 30 VA secondary

Electric Door Opener Features

TekTone's PO001 Electric Door Opener is for use in unlocking and locking doors from a variety of TekTone remote stations. The door opener can be installed in place of the door lock, or on a door jamb with various door lock sets.

The PO001 is a normally locked type with heavy duty coils, and operates on 8-16 VAC or 3-6 VDC. The unit features a flat face with satin zinc finish and solid brass locking latch for long wear. The PO001 is reversible for mortise-type locks and latches up to 1/2" width and throw, and is ideal for most narrow jamb mortise-type installations. Depending on the specific job requirements, the PO001 can be reversed for right or left-hand door installation.

Dimensions

Faceplate:	1.25" × 5.875"	(31.8 mm × 149 mm)
Case width:	0.9375"	(24 mm)
Case depth:	1.4375"	(37 mm)
Latch opening:	1.375"	(35 mm)

Features

- Easy installation
- Low-voltage operation
- Multiple applications
- Precision engineering

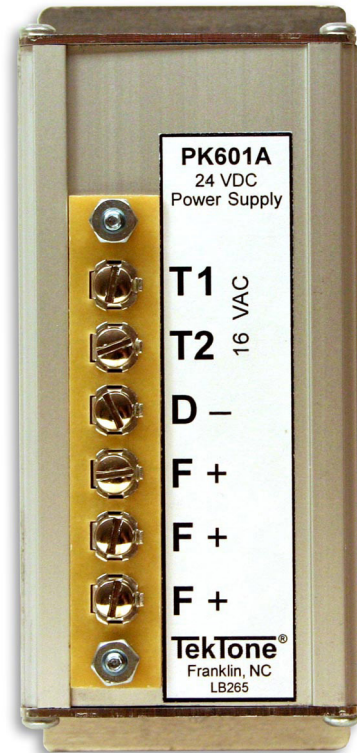
Description

The PK601A is a 24 VDC power supply designed to power auxiliary signaling devices used in TekTone® emergency call systems. The unit provides a filtered 24 VDC output rated at 1 amp.

Although specifically designed for use with emergency call systems, the PK601A may also be used as a DC silent door opener adapter in TekTone apartment entrance systems.

Specifications

Dimensions:	Height:	5"	(127 mm)
	Width:	2.375"	(60 mm)
	Depth:	2.25"	(57 mm)
Construction:	Quality electronic components mounted on a PC board encased in a rugged extruded aluminum housing		
Connections:	Screw terminals		
Mounting:	Surface		
Output voltage:	24 VDC		
Output current:	1 amp		
Power			
Requirements:	16 VAC, 30 VA		



PK601A 24 VDC Power Supply

Suggested Uses

Tek-CARE®500 Wireless Nurse Call System
NC50xES-series Remote Receiver
LI381, LI382 or LI382LED Dome Lights

CM800 Emergency Call System
BE007 DC Corridor Bell
PK612A DC Flasher

Tek-ENTRY® Apartment Entry System
LI404B Auxiliary Strobe for Hearing Impaired
PK205 Intercom Amplifier

Features

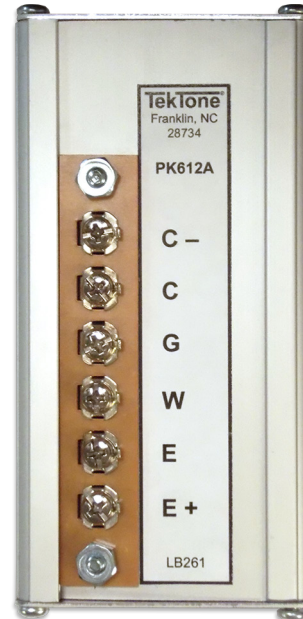
- DC operation
- Easy installation
- Low power requirement

Description

The PK612A is a light-duty lamp flasher for DC use. It is designed for emergency call annunciators or similar use where continuous operation is not necessary.

Specifications

Dimensions:	Height:	5"	(127 mm)
	Width:	2.375"	(60 mm)
	Depth:	2.25"	(57 mm)
Construction:	Rugged extruded aluminum case housing quality electronic components on a printed circuit board.		
Connections:	Screw terminals		
Mounting:	Surface		
Power Required:	24 VDC		
Duty:	Light		
Load Current:	1 amp		



PK612A Lamp Flasher

Required Components

CM800-series Annunciator
PK601A DC Power Supply for PK612A Lamp Flasher
PK2019A Power & Control Unit
SF117/2C or SF117/4C Emergency Call Switch
SS106 Transformer

NOTES:

1. For SF-series emergency switches, use single-gang ring, or single-gang ring and double-gang box.
2. For LI-series dome lights, use double-gang ring (or double-gang ring and box).
3. For AM- and CM-series apartment panels, see specification sheets.
4. For IR300-series nurse call stations, use Steel City #3GC and #H3BD or exact equivalent.
5. For IR150B-series, use Steel City #3GC and #H3BD. If space is limited, use ARC-CO #2GBD and #3GC.
6. For IR150SS Station, use OH600 flush housing mounted horizontally.
7. The last two digits of frame and housing model numbers indicate the number of gangs (i.e., panel capacity). Exceptions: IH101, IH103, OH600, OH601.
8. Attach the IH103 mounting plate to a finished wall, single-gang box, double-gang box or square masonry box.

Model #	IH101 backbox (flush)	IH103 plate (flush)
IR103E	×	×
IR104E	×	×
IR105E	×	×
IR203E		×
IR204E		×
IR205E		×
IR207B	use standard 2-gang electrical box	

Dimension and Finish Chart—Housings, Frames, Desk Cabinets

Flush Mount Housings					
Model#	Overall Width	Wall Cutout Width	Overall Height	Wall Cutout Height	Overall Depth
IH101	4"	4-1/4"	5-1/2"	5-3/4"	1-3/4"
IH103	4-9/16"	n/a	5-7/8"	n/a	1/16"
OH150	5-1/4"	4-1/2"	12-5/8"	11-5/8"	3-3/4"
OH191	4-3/8"	4-1/2"	17-1/8"	17-1/4"	3-1/2"
OH192	8-3/8"	8-1/2"	17-1/8"	17-1/4"	3-1/2"
OH193	12-3/8"	12-1/2"	17-1/8"	17-1/4"	3-1/2"
OH194	16-3/8"	16-1/2"	17-1/8"	17-1/4"	3-1/2"
OH201	5-3/8"	4-1/2"	16-7/8"	16-1/4"	3-7/8"
OH202	9-3/8"	8-1/2"	16-7/8"	16-1/4"	3-7/8"
OH203	13-3/8"	12-1/2"	16-7/8"	16-1/4"	3-7/8"
OH204	17-3/8"	16-1/2"	16-7/8"	16-1/4"	3-7/8"
OH600	4"	4-1/4"	10-3/16"	10-3/8"	1-13/16"
OH601	4"	4-1/4"	16-1/16"	16-1/4"	1-13/16"

Flush Mount Frames		
Model #	Width	Wall Cutout
OF191	6-1/4"	-
OF192	10-1/4"	-
OF193	14-1/4"	-
OF194	18-1/4"	-
	Height:	19" (overall)
	Depth:	7/8"
OF201	6-1/4"	4-1/2"
OF202	10-1/4"	8-1/2"
OF203	14-1/4"	12-1/2"
OF204	18-1/4"	16-1/2"
	Height:	17-3/4" (overall)
	Cutout:	15-7/8"
	Depth:	2-1/2"

Desk Cabinets		
Model #	Width	Depth
*IH302	9-1/2"	6"
*IH303	13-1/2"	6"
* Cabinet Assembly Only. IH300 series Height = 17"		

Surface Mount Frames			
Model #	Width	Height	Depth
OF191S	6-1/4"	19"	2-1/4"
OF192S	10-1/4"	19"	2-1/4"
OF193S	14-1/4"	19"	2-1/4"
OF194S	18-1/4"	19"	2-1/4"
OF195S	22-1/4"	19"	2-1/4"

Surface Mount Housings	
Model #	Width
OH301	6-1/8"
OH302	10-1/8"
	Height: 17-3/4"
	Depth: 3-5/8"