



Quick Start Guide

O4P4



1 Warning and Caution

- If the product does not work properly, please contact your dealer or the nearest service center. Never attempt to disassemble the camera yourself. Any unauthorized changes or modifications could void the warranty.
- Do not allow water or liquid intrusion into the camera.
- All installation and operation here should conform to local electrical safety codes. Make sure the device is firmly installed on the wall or ceiling.
- Do not use camera beyond specified voltage range.
- Do not drop the camera or subject it to physical shock.
- Avoid touching the camera lens.
- If cleaning is necessary, please use cleaning cloth to wipe it gently.
- Do not aim the camera at the sun or extremely bright light sources.
- Do not place the camera in extremely hot or cold environments and dusty and damp locations. Do not expose it to highly electromagnetic radiation.
- Do not block any ventilations.

2 Package



Camera



Quick start guide



2 tapping screws PA 4×25



CD



Screwdriver



Plastic plug ×2

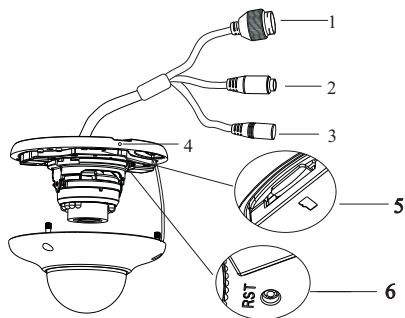


Drill template

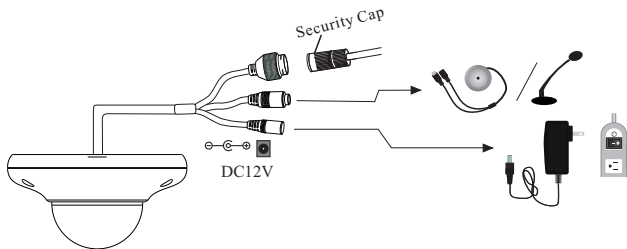


Wall mounting bracket

3 Overview



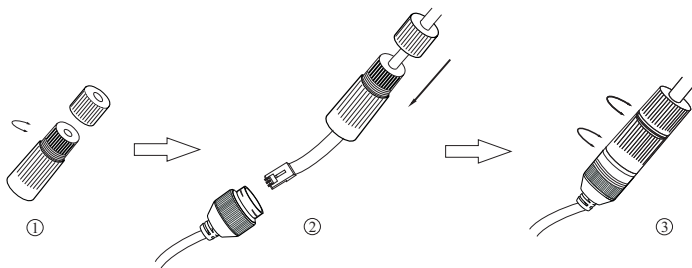
1	Ethernet connector	4	Microphone
2	Audio input connector	5	Micro SD card slot
3	DC power connector	6	Reset



*** 1 It is recommended to install the security cap for outdoor installations.**

*** 2 DC 12V power supply is not required if a PoE switch or injector is used to power the camera.**

► Connecting Network Cable



① Loosen the nut from the main element.

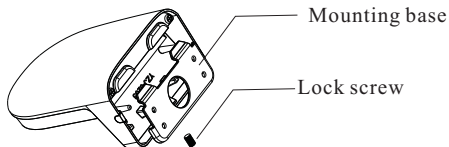
② Run the network cable (without RJ 45 connector) through both elements. Then crimp the cable with RJ 45 connector.

③ Connect the cable to the hermetic connector. Then tighten the nut and the main cover.

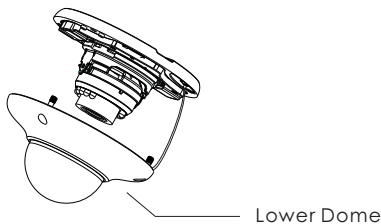
4 Installation

* Before you start, please make sure that the wall or ceiling is strong enough to withstand three times the weight of the camera and bracket.

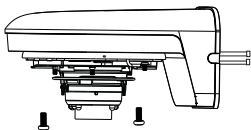
- ① Loosen the lock screw of the bracket and then remove the mounting base from the bracket.



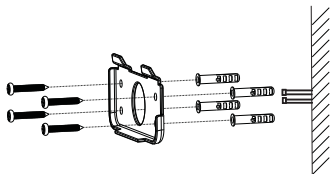
- ② Loosen the screws to remove the lower dome from the camera.



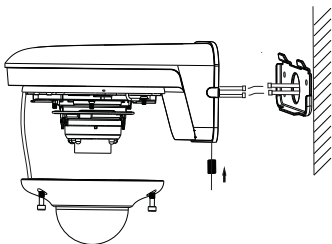
- ③ Pull the cables through the bracket. Then fix the camera onto the bracket with the screws provided.



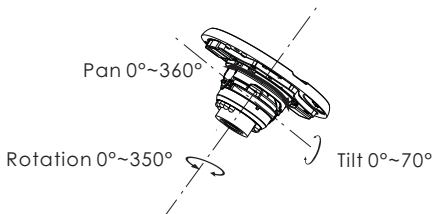
- ④ Fix the mounting base of the bracket onto the wall with the screws.



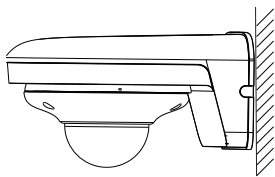
- ⑤ Connect the cables. Then attach the bracket onto the mounting base and fasten them with the lock screw.



- ⑥ Adjust the camera to obtain an optimum angle. Before adjustment, preview the image of the camera on a monitor.



- ⑦ Install the lower dome back to the camera with the screws.

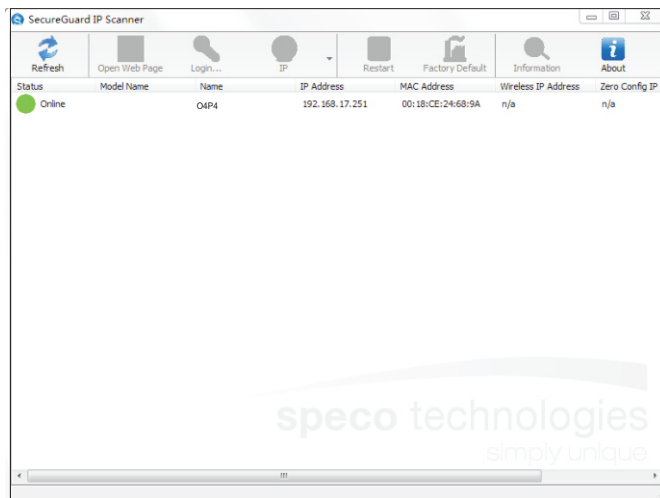


5 Web Operation and Login

IP Scanner can search for the device on the local network.

● Operation

- ① Make sure that the camera and the PC are connected to the same local network. The camera is set to DHCP by default.
- ② Install IP Scanner from the CD and run it after installation.



③ In the device list, you can view the IP address, model number, and MAC address of each device. Select the applicable device and double click to open up the web viewer. You can also manually enter the IP address in the address bar of the web browser.

The login interface is shown above. Default user name is admin and password is 1234. After logging in, follow directions to install applicable plugins.