



speco technologies®

a-live™
SOPHISTICATED SIMPLICITY

Wireless Multizone Audio Distribution System

AA1 Wireless Stereo Distribution Amplifier

Quick Start Guide

Stream. Control. Entertain.

Introduction

This class D digital amplifier has great performance and is flexible enough to satisfy picky residential audio enthusiasts while simultaneously meeting the demands of commercial installations. With the free iOS and Android applications you can easily control your smart audio system to stream and distribute music in up to 12 zones. You can stream the same music to all zones or different music to different zones, no matter if the music is from local storage like cell phone memory, NAS, USB flash disk and hard disk or from online streaming services such as Spotify, Tidal, TuneIn, iHeartRadio, Napster, etc.

In This Box

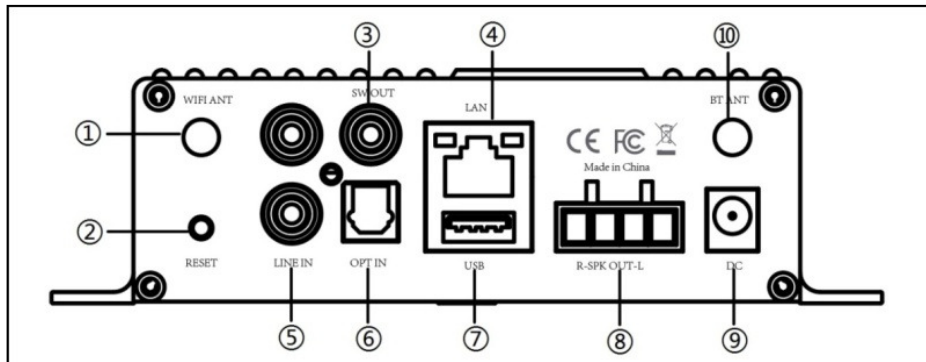


- AA1 x1
- Quick Start Guide x 1
- Power supply x1
- RCA cable x2
- Antennas x2

What You Need For Installation

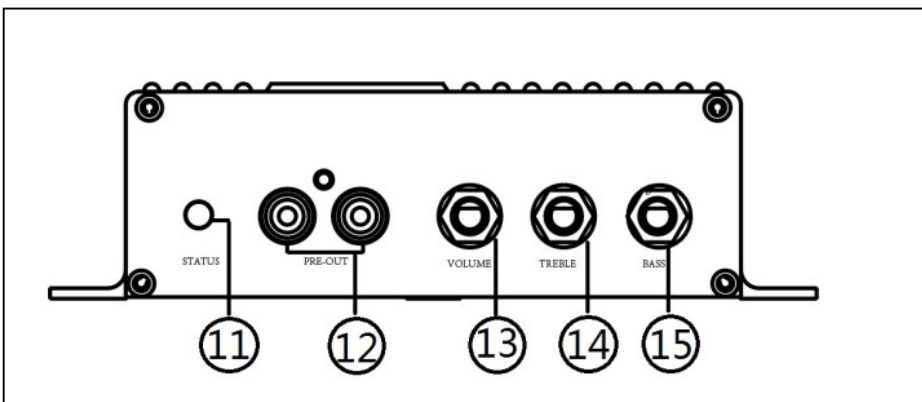
- Wifi Router
- Speakers
- 14-2 to 18-2 Speaker Wire
- Small-head (eyeglass type) Screwdriver
- Mobile device or Computer

Interface and Functions



- ① WiFi Antenna: Used for WiFi connection
- ② Reset: Used to reset the device if you have a problem with your WiFi connection
- ③ Subwoofer out: Used to connect to an active subwoofer
- ④ Network connection: RJ45 used to connect to a wired Ethernet network
- ⑤ Line input: Analog input used to connect audio devices via an RCA cable
- ⑥ Optical: Used to provide digital input from a 2.1 optical equipped device
- ⑦ USB input: Used to connect local storage devices
- ⑧ Speaker terminals: Phoenix speaker terminal used to connect to 8 Ohms speakers
- ⑨ Power input: DC power input used to connect the power adaptor
- ⑩ Mobile wireless antenna: Used to pair with mobile devices using a popular wireless service

Interface and Functions (Cont.)



⑪ LED: Indicates the status of the device

Blinking White: Power on or Network Connecting

Solid White: Network connected, WiFi and USB streaming

Solid Blue: Wireless Input Active

Solid Green: Line Input Active

Solid Purple: Optical Input Active

⑫ Pre out: Used to provide analog signal to another amplifier

⑬ Volume: Used to manually tune the device volume

⑭ Treble: Used to manually tune the treble

⑮ Bass: Used to manually tune the bass

How it works



Installation Guide

1. Unpack your system

Verify all accessories are included in your box.

2. Install your system

Place your amplifier at a safe and proper location. An integrated mounting bracket allows mounting to a wall or surface, but we suggest making sure you complete all installation steps before permanently mounting.

3. Connect your system

Speaker Wiring Diagrams (Note that the AS1 can handle speakers from 4 to 16 Ohms impedance)

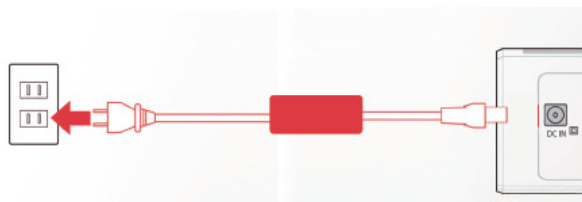


Speaker Wire Connection

Properly wire and connect the phoenix speaker terminals on the amplifier with the inputs on your speaker, noting positive and negative terminals match with the positive and negative terminals on your speaker.

Power connection

Power the amplifier with the power adaptor included in the accessories. It is recommended to connect the adapter into the amplifier first, and then plug the AC plug into your wall or other outlet.



4. Download the App

Download the **a-live** application from the App Store for iOS and Google Play for Android.

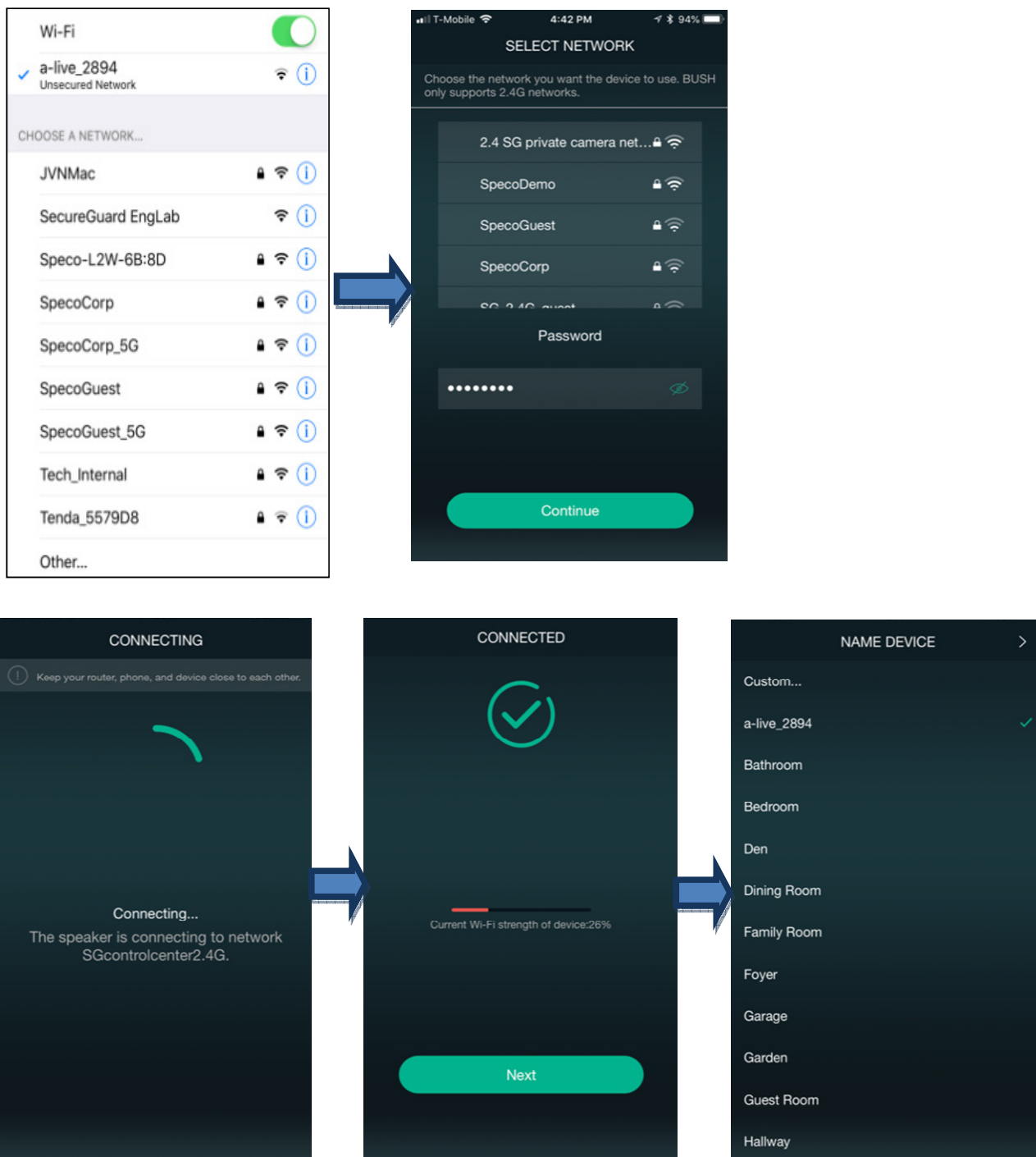


5. Configure

Option 1-Configuration via app

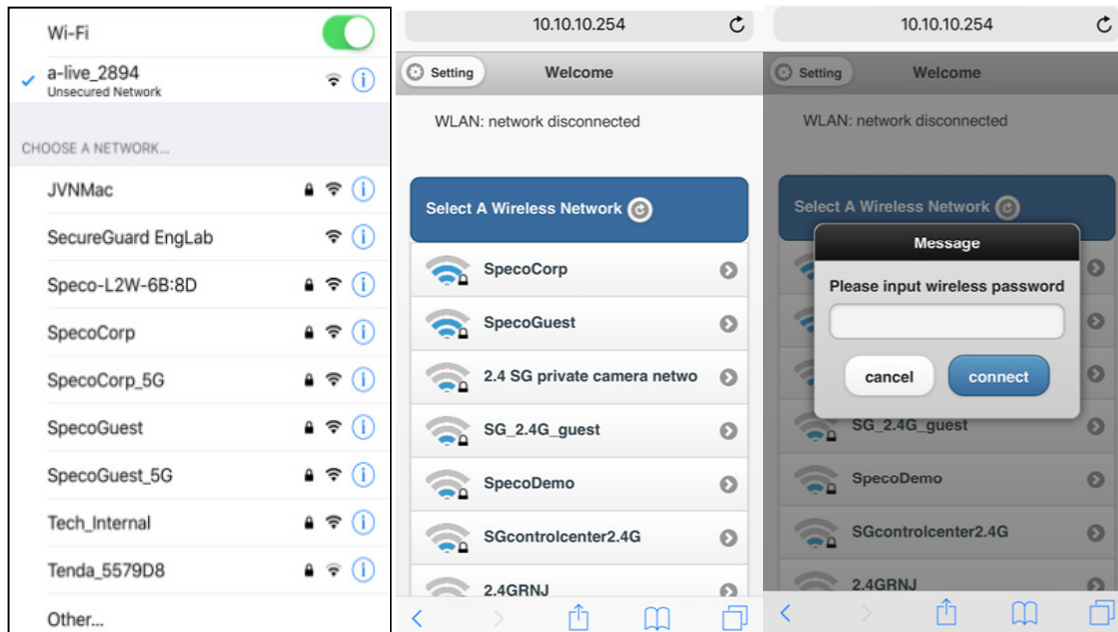
-Connect your Mobile Device to your Wifi Network

-Open the application> press Add Device(+)>choose settings> choose the a-live_xxxx hotspot> after connecting, press the 'turn back' on your WLAN settings> the app will jump to the configuration step>choose the 2.4G network and enter the password>wait for the device to be configured.



Option 2- Configuration via Web console

- 1. Power the device.
- 2. Choose the hotspot(a-live_XXXX) in the WiFi settings on your cell phone or computer and connect.
- 3. Open your browser and enter 10.10.10.254 in the address bar.
- 4. Go for WiFi>choose your 2.4G router>enter the password> click connect> wait for the device to be configured.



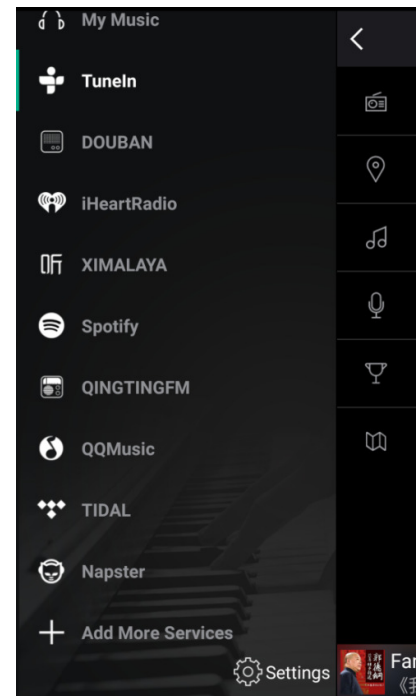
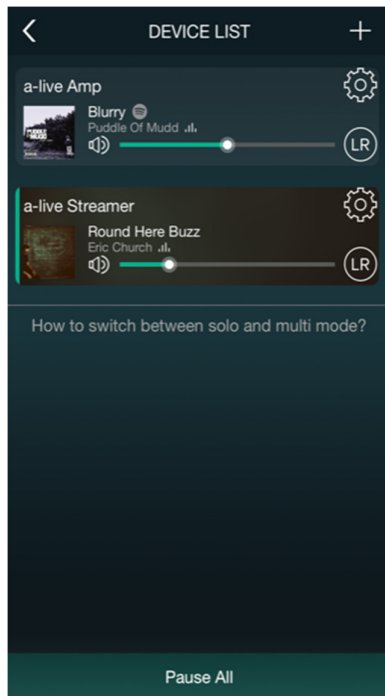
Option 3-Connection via LAN

- Power the device
- Plug in the wired cable to the RJ45 Ethernet, the device will show on the app in about 10 seconds.

App Photo Gallery:

Playback

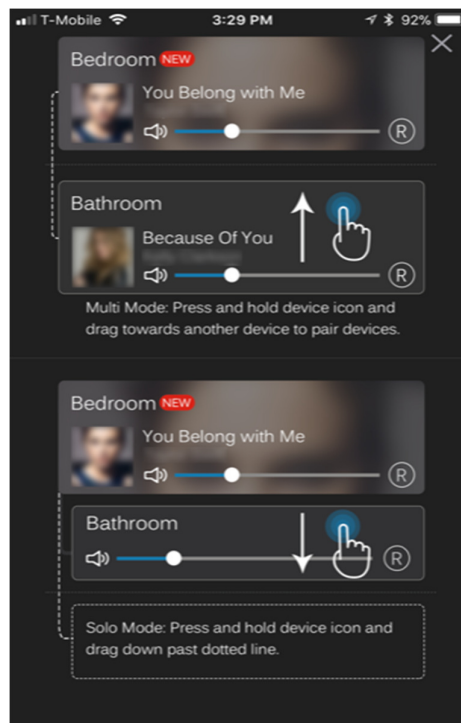
Your Device List will show all available zones. Press a zone to see the information on the current source. While on the view for the source, swipe right to reveal the available sources. From there, you can select what you want to hear next, or swipe left to return to the currently playing source.



You also have the ability to combine zones so that each zone is playing the same source at the same time.

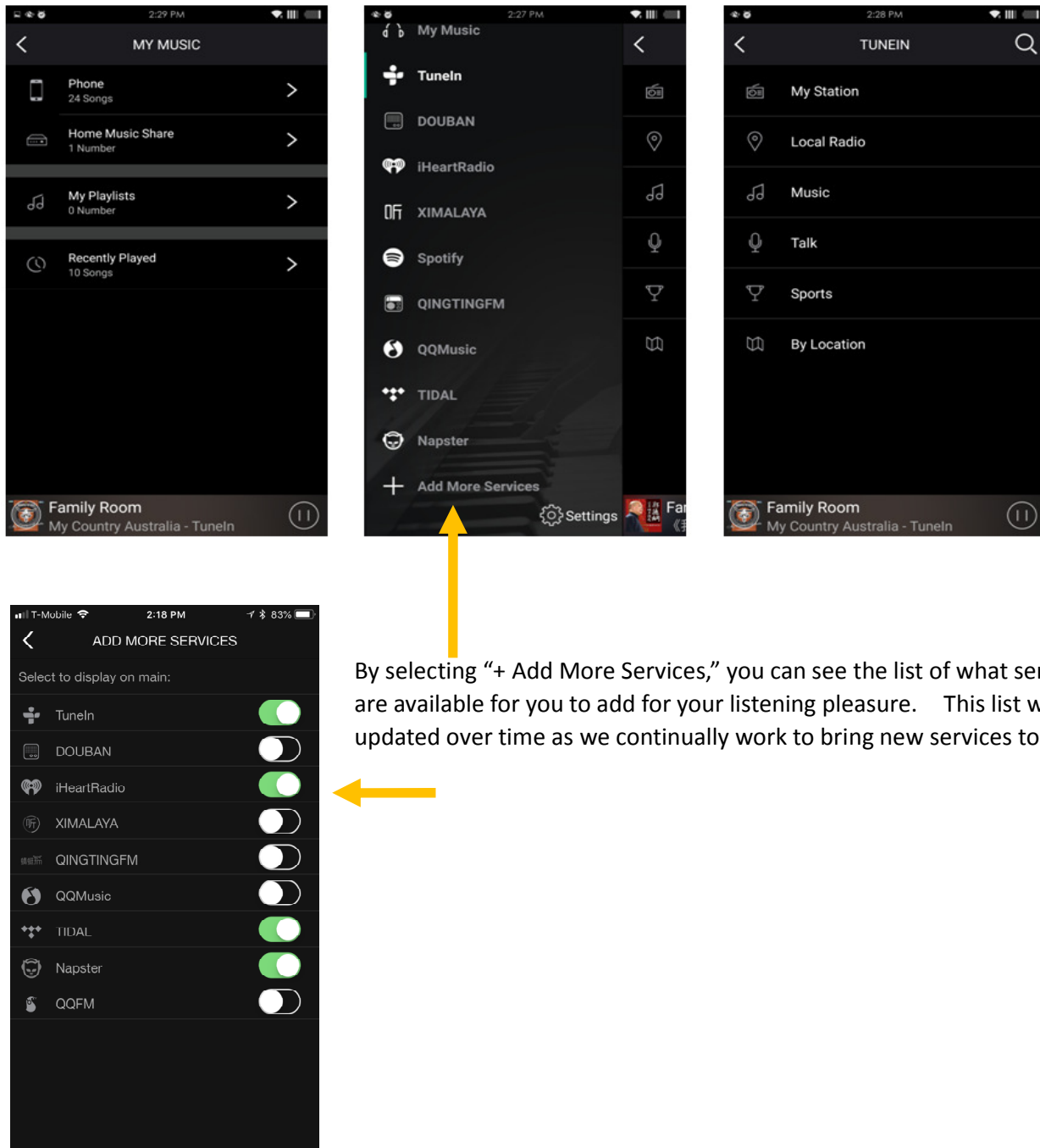
Just press your finger on the zone you want to play what another zone is playing until it indicates it is ready to merge. Then, drag it on top of the master zone and release. In roughly 30 seconds, the zones will combine.

To separate zones, repeat the process, but this time drag the zone you want to free below the dotted line.



Streaming from mobile device memory/NAS/Online Music Services

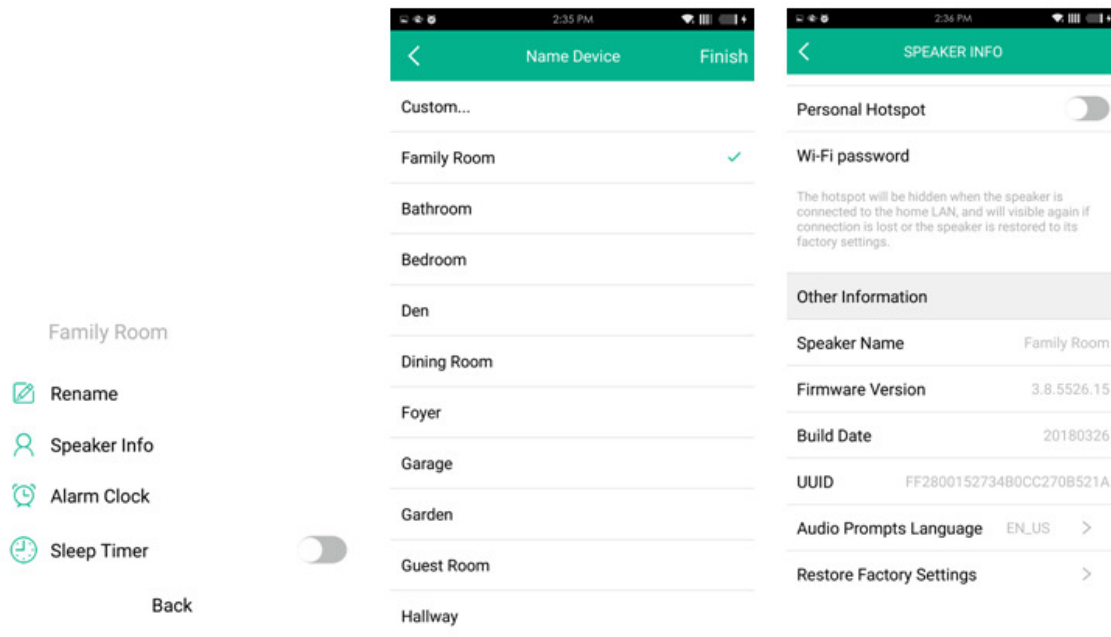
These screens let you access your available music, whether it be hard files on your network or connected to your a-live hardware, or what streaming options you've selected to be available.



By selecting "+ Add More Services," you can see the list of what services are available for you to add for your listening pleasure. This list will be updated over time as we continually work to bring new services to a-live.

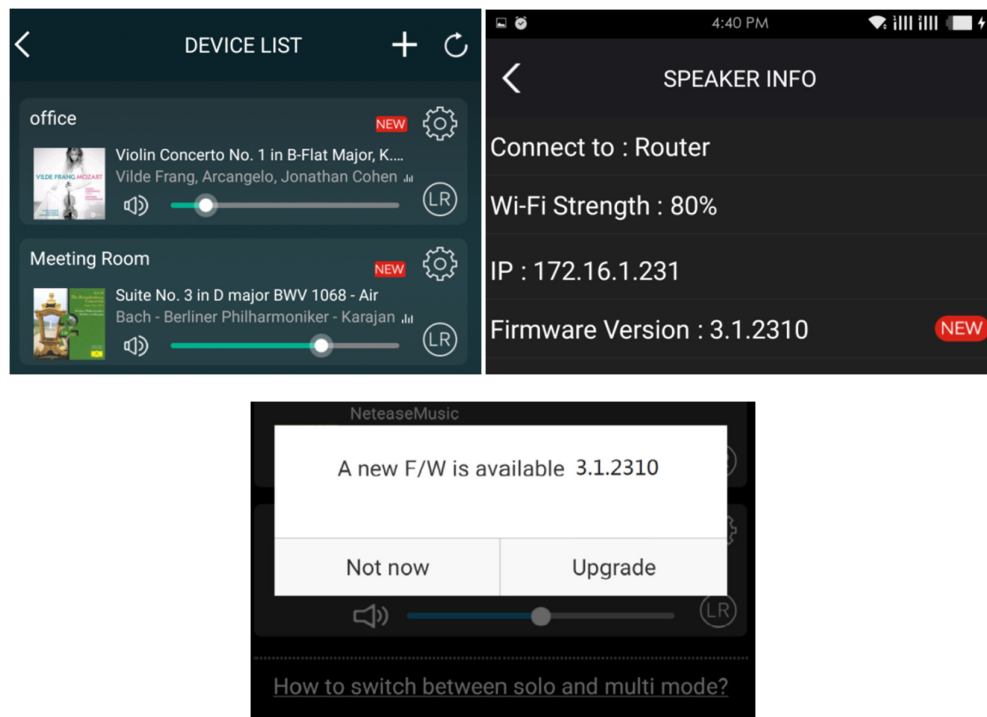
Device Settings

Through device settings you can set an alarm clock or sleep timer, get technical information on your speaker, or rename it.



Firmware update

a-live will notify you in your app when there is a new firmware version available. It's recommended to update firmware whenever available as this might not only correct bugs or improve security, but could also add new features or services.



FAQ

Q: Do your devices support airplay and third-party DLNA apps?

A: Yes. They support airplay and third-party apps like BubbleUPNP...

Q: How many zones can you group on one system?

A: 12 rooms is the maximum, while 8 zones are recommended.

Q: What distance can your wireless audio system cover?

A: Once the system is connected to your WiFi router, you can stream your music anywhere there is a WiFi signal.

Q: Can it play high resolution music?

A: Yes. Our devices can play APE and FLAC within the normal bit rate range. They also support decoding 24bit/192khz music files.

Q: How many languages do you support?

A: Our devices will auto-detect your mobile device language and change automatically. Currently, we support English, French, German, Spanish, Chinese, Portuguese, Korean and Japanese and more on the way.

Q: What online music services do you support?

A: Spotify, Tidal, iHeartRadio, Tunein, Napster, and more, with more pending.

Q: Can I play local music?

A: Yes. You can play music from "MY MUSIC" on the application from local storage devices such as mobile device storage, USB thumb drives, portable hard disk and NAS.

Q: Can a-live work with Windows devices?

A: The Windows application is not available at the moment, but on the Windows PC, users can use iTunes, Foobar2000 and Spotify connect as a line input.

Technical Specifications

Amplifier Output	2 x 80W Max
Amplifier Impedance	4-16 Ohms
Wireless network	IEEE802.11 b/g/n 2.4G
LAN	single 10/100M RJ45
Frequency Response	20Hz to 20KHz
Power input	DC 32V, 5A
Audio Source Input	USB 2.0, Coaxial, Analog RCA, Optical(2.1)
Audio Source Output	Analog RCA
Treble	Yes
Bass	Yes
Volume Knob	Yes
Dimensions:	6.25 " L x 5.75 " W x 1.6 " H
Weight	1.2 Lbs.
Music format	MP3/AAC/AAC+/ALAC/APE/WAV
Decoding	Up to 24bit/192KHz



This device complies with part 15 of the FCC rules. Operation is subject to the following two conditions: 1) This device may not cause harmful interference, and 2) this device must accept any interference that may cause undesired operation.

@Copyright 2018 by Speco Technologies. All Rights Reserved.

The information contained in this guide is intended to be accurate and reliable. Speco Technologies assumes no responsibility for any errors contained in this guide. Speco Technologies reserves the rights to make changes in the specifications and/or design of the above mentioned product without prior notice. The diagrams contained in this guide may also not fully represent the product that you are using and they are for illustration purposes. Speco Technologies assumes no responsibility for any differences between the product mentioned in this guide and the product you purchased.

Rev. 4/2/2020