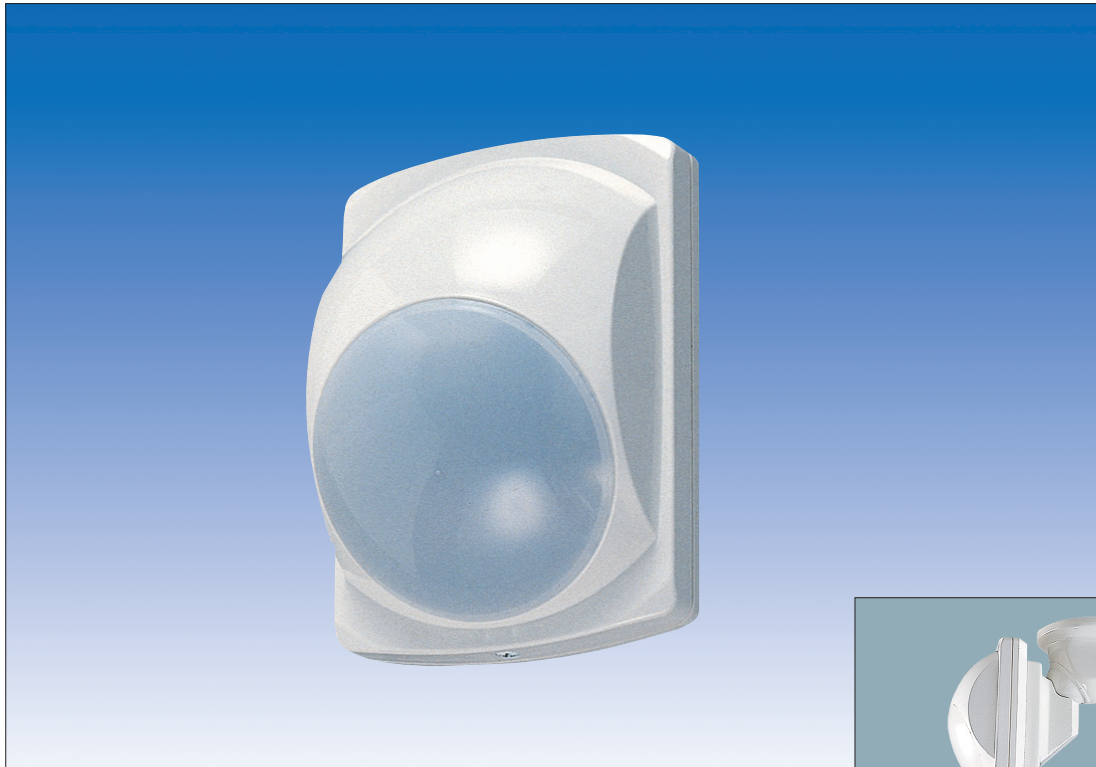


# PASSIVE INFRARED SENSOR

**PA-4810E WIDE ANGLE**

**PA-4820E LONG ANGLE**



OPTIONAL : ATTACHMENT BCW-401

## WALL MOUNT HIGH QUALITY PASSIVE INFRARED SENSOR

### ORIGINAL QUAD ELEMENT + NEW SIGNAL PROCESSING (FUZZY LOGIC)

TAKEX original quad pyroelectric sensor improves sensitivity. This newly developed original pyroelectric sensor coupled with new Fuzzy Logic provides high catchability.

### MIRROR OPTICS AND EASY AIMING SYSTEM

Precise mirror optics and new quad element assure high sensitivity and high reliability. As mirror and head unit move together, area adjustment does not reduce/blur sensitivity. TAKEX original view finder assures precise and quick adjustment.

### TROUBLE ALARM

Unit monitors the following functions. When a trouble condition is detected, the alarm LED lights and trouble alarm is output.

- Unit trouble** ..... A trouble alarm is triggered when inner circuitry/wiring damaged/broken.
- Low voltage** ..... A trouble alarm is triggered when sensor detects a drop in supply voltage.
- Failure to replace** ... A trouble alarm is triggered when head unit is not replaced after adjustment is completed.

### FINE MOTION DETECTION

Unit can be adjusted from quad element sensing to two twin element by built-in switch for situations where close range detection is desirable.

- \*Alarm LED disable (ON/ OFF)
- \*Alarm contact changeover (N.C./ N.O.)
- \*Sensitivity adjustment (60%, 80%, 100%, 120%)

### ALARM MEMORY

Units contain special circuitry to indicate an alarm has been activated during armed period. Especially useful when more than one unit is used per zone.

### REMOTE LED CONTROL

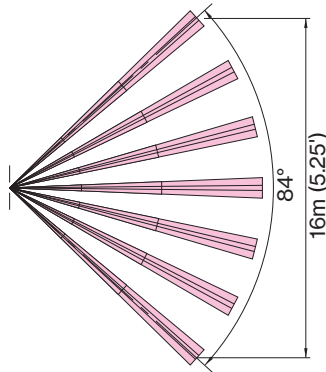
Allows the LED to be enabled/disabled via the control panel.

# PASSIVE INFRARED SENSOR

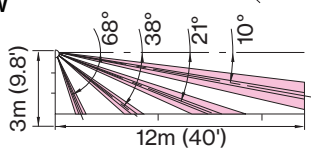
## COVERAGE

### PA-4810E

TOP VIEW / WIDE ANGLE

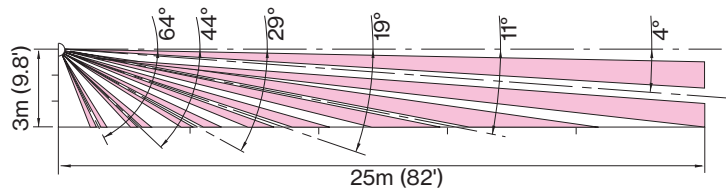
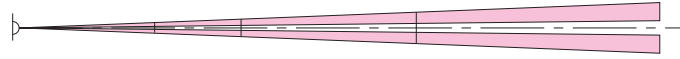


SIDE VIEW

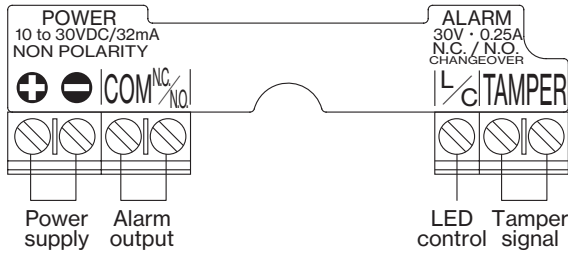


### PA-4820E

TOP VIEW / LONG RANGE



## TERMINAL ARRANGEMENT



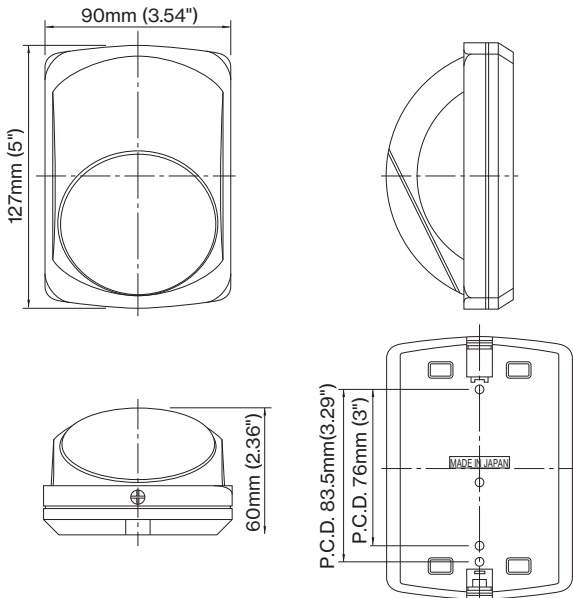
## SPECIFICATIONS

MODEL	PA-4810E	PA-4820E
DETECTION	Passive infrared (Quad : Fuzzy logic)	
COVERAGE	WIDE ANGLE 12m(40') Max	LONG RANGE 25m(82') Max
NUMBER OF SENSITIVE ZONE	18 pairs (72)	6 pairs (24)
MOUNTING POSITION	Indoor wall / pillar	
SUPPLY VOLTAGE	9.5 to 28VDC (non-polarity)	
POWER CONSUMPTION	25mA Max	
ALARM OUTPUT	Dry contact relay (N.O., N.C. selectable) Reset : approx. 2sec 30VDC (24VAC), 0.25A Max resistive load (protective resistance 3.3Ω)	
TAMPER SIGNAL	Dry contact (N.C.) Open when cover is detached 30V, 0.1A Max resistive load	
FINE MOTION DETECTION	36 pairs	12 pairs
ALARM LED	Red LED Warm up : flickering (every 0.5 sec.) Alarm : solid (approx. 2sec.) Memory : continuous solid Trouble alarm : continuous solid (LED disable)	
ALARM MEMORY	3 min-Flickering, 47 min-Lighting	
LED CONTROL	Controls alarm LED indication with terminal L/C	
TROUBLE ALARM	Unit monitors damage on inner circuitry / wiring (Operate : initiate trouble alarm) Low power voltage : monitors drop in power voltage (Operate : initiate trouble alarm) Failure to replace : monitors failure to replace head unit (Operate : initiate trouble alarm)	
AMBIENT TEMPRANGE	-10°C to +50°C (+14°F to +122°F) without condensation	
WIRING	Terminals	
WEIGHT	165g (5.82oz.)	
ADJUSTMENT	Vertically : 20° Horizontally : ±5°	
ACCESSORY	Fixing screw : 4×30 2pcs.	

\* The specifications are subject to change without notice.

## EXTERNAL DIMENSIONS

[Unit : mm (inch)]



Please note : This sensor is designed to detect intrusion and to initiate an alarm; it is not a burglary or a crime preventing device. TAKEX is not responsible for damage, injury or losses caused by accident, theft, Acts of God (including inductive surge by lightning), abuse, misuse, abnormal usage, faulty installation or improper maintenance.

# TAKEX

### In Japan

Takenaka Engineering Co., Ltd.  
83-1, Gojo-Dori, Sotokan Nishi-iru, Higashino,  
Yamashina-ku, Kyoto 607-8156, Japan  
Tel : 81-75-501-6651

<https://www.takex-eng.co.jp/>

### In the U.S.

Takex America Inc.  
1810 Oakland Rd, Suite F,  
San Jose, CA 95131, USA  
TEL : 408-747-0100  
FAX : 408-734-1100

<https://www.takex.com>

### In Australia

Takex America Inc.  
4/15 Howleys Road, NottingHill,  
VIC,3168  
Tel : +61 (03) 9544-2477  
Fax : +61 (03) 9543-2342

<https://www.takex.com>

### In the U.K.

Takex Europe Ltd.  
Aviary Court, Wade Road,  
Basingstoke, Hampshire. RG24 8PE, U.K.  
Tel : (+44) 01256-475555  
Fax : (+44) 01256-466268

<https://www.takex.com>