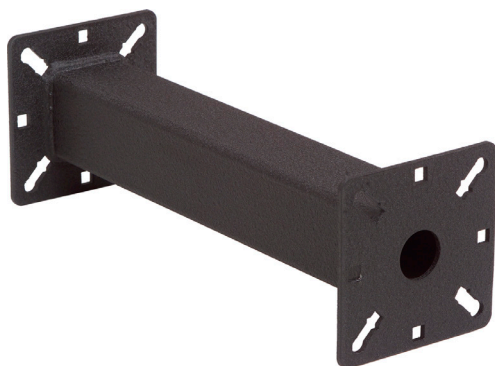


PEDESTAL EXTENSION ARMS

12-EXT-2



PRO Features:

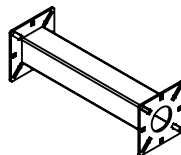
- 1) Two (2) universal face plates (*sized to match your pedestal*)
- 2) Heavy duty square tube in 2", 3", or 4" (.120" wall)
- 3) Extends the reach of your pedestal
- 4) Match to your specific pedestal (see options below)
- 5) Phosphate pretreatment (rust inhibitor)
- 6) TGIC outdoor polyester powder coat with UV protectant
- 7) Includes carriage bolts and nuts
- 8) Boxed individually
- 9) Customizable dimensions and colors available upon request*

Description:

This convenient arm allows you to extend your pedestal's reach through bushes, over fences, and past other possible obstructions. Make sure you match the correct extension arm with your pedestal's face plate -- there are a few different varieties.

Models

Model #	Tube Size	Reach	Color Code	Face Plate	Box Size
12-EXT-2 (add color code)	2"	12"	-BLK = Black Wrinkle -WHI = White -YEL = Yellow	4"x 4"	13x6x6
12-EXT-3 (add color code)	3"	12"	-BLK = Black Wrinkle -WHI = White -YEL = Yellow	4.75"x 4.75"	13x6x6
12-EXT-4 (add color code)	4"	12"	-BLK = Black Wrinkle -WHI = White -YEL = Yellow	8"x 8"	13x6x6



Customize

Stock Color

Black

Readily Available Colors*

White

Safety Yellow

Custom "RAL" colors*



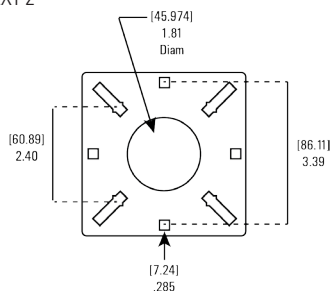
Adjust reach, face plate, and tube specifications to meet your needs.

*additional costs and lead times apply

Face Plate

4" x 4" x .120" (11 gauge)

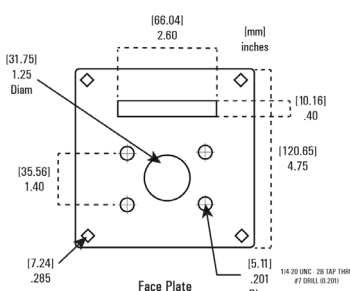
12-EXT-2



Face Plate

4.75" x 4.75" x .120" (11 gauge)

12-EXT-3



Face Plate

8" x 8" x .120" (11 gauge)

12-EXT-4

