

TechChoice®
End-to-End Solutions

**Quality
to fit
your
budget**



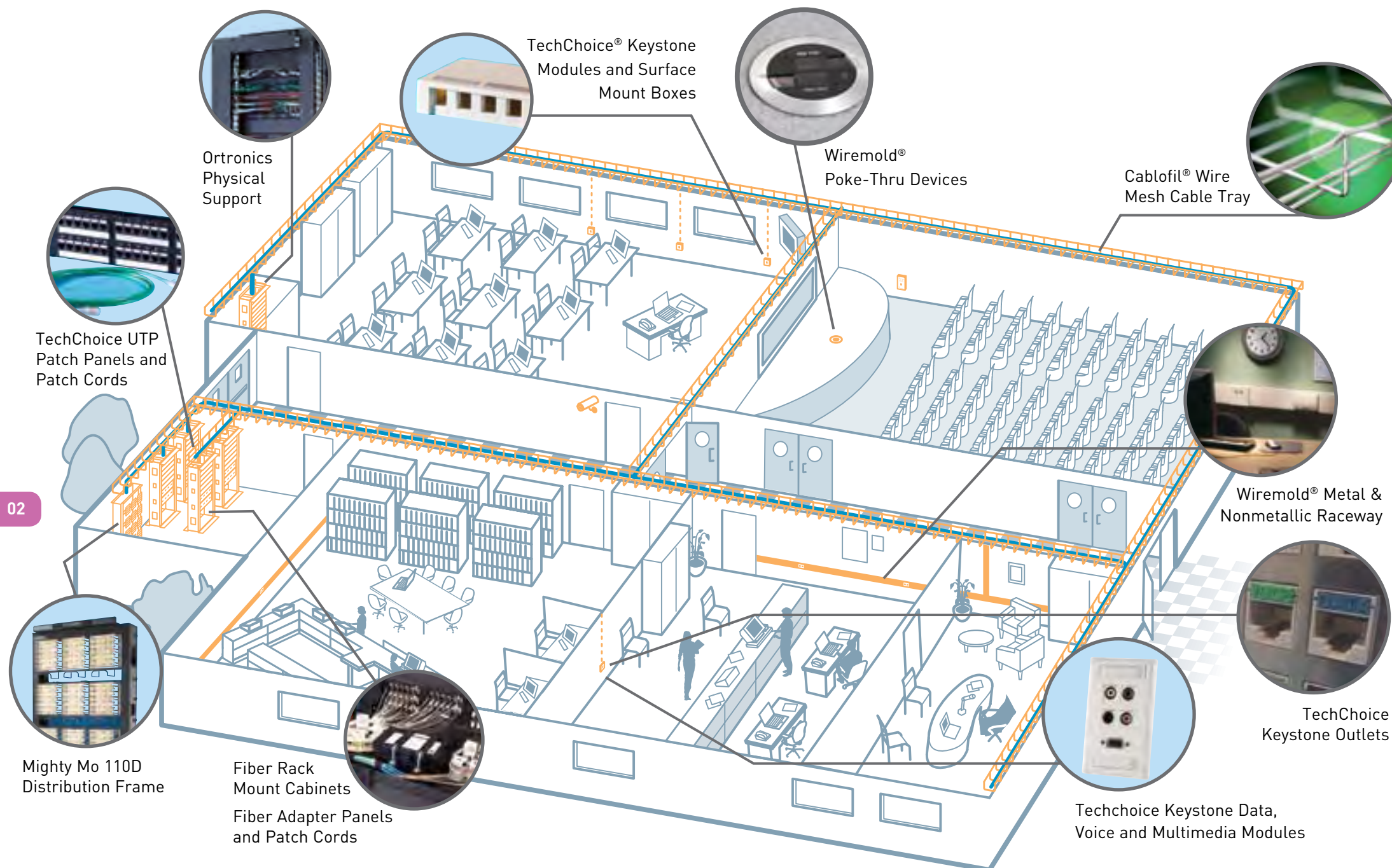
 **legrand**®

Ortronics

TechChoice® structured cabling solutions combine the reliability and ease of installation you'd expect from Legrand/Ortronics with quality performance and rugged construction to provide a cost-effective option for communications technicians.

Products are third party tested to meet Category 5e and 6 specifications for TIA/EIA-568-B.2 and ISO11801-2002.

The TechChoice end-to-end solution



When integrated into our standard line of physical support and combined with our fiber offering, TechChoice provides a solid end-to-end infrastructure solution for everyday opportunities.

Warranty

A 15-year product and applications assurance warranty is available for all qualifying installations,* offering additional value and piece of mind when selecting TechChoice.

*When installed by a Legrand Data Communications certified installer using an approved cable manufacturer.



WORKSTATION



OR-KS6



OR-KSRJ25

KEYSTONE JACKS

TechChoice keystone jacks and modules feature an easy-to-follow universal wiring label and support standard termination using a 110-impact tool. The keystone footprint allows for the greatest flexibility in installation scheduling because its rear insertion into the faceplate allows the technician to complete the termination before, during and after the construction process.

PART NO. Single Pack	PART NO. Pack of 25	DESCRIPTION
OR-KS6A	OR-KS6	Category 6, 8-position, 180° exit, T568A/B wiring, icon compatible
OR-KS5EA	OR-KS5E	Category 5e, 8-position, 180° exit, T568A/B wiring, icon compatible
OR-KSRJ25A	OR-KSRJ25	RJ25, 6 position jack, USOC wiring, icon compatible
	OR-KSICON	TechChoice keystone icon compatible 2 sided voice/data

fog white	-00	-13	-36	-42	-88	-99	-43	-44
	WM				WM	WM		
RJ25 Color Choices							-45	-78
Category 5e and 6 Color Choices								WM

-00=Black; -13=Electrical ivory; -36=Blue; -42=Red; -88=Cloud white; -99=Wiremold® ivory; -43=Orange; -44=Yellow; -45=Green; -78=Gray. Standard color is fog white, requiring no tail code.



OR-KSST



OR-KSSC

FIBER KEYSTONE MODULES

PART NO.	DESCRIPTION
OR-KSST	1-ST simplex multimode, phosphor-bronze alignment sleeves, 180° exit. Fog white. Sold with dust cover
OR-KSSC	1-SC simplex multimode, phosphor-bronze alignment sleeves, 180° exit. Fog white. Sold with dust cover
OR-KSLC	1-LC (2 fibers) multimode, phosphor-bronze alignment sleeves, 180° exit. Fog white. Sold with dust cover

NOTE: For Wiremold Ivory, add tail code of -99 to end of part number (example OR-KSST-99) Sold individually.



OR-KSFCNR



OR-KSFCN

MULTIMEDIA KEYSTONE MODULES



OR-KSRCAR



OR-KSSV



OR-KSBNC



OR-KSHDMI



OR-KSUBAA



OR-KSUBAB



OR-KS35STST

PART NO.	DESCRIPTION
OR-KSFCNR	F-connector, Recessed, F/F, 75 ohm
OR-KSFCN*	F-connector, F/F, 75 ohm
OR-KSRCAR	RCA (red insulator), 110 termination
OR-KSRCAB	RCA (black insulator), 110 termination
OR-KSRCAY	RCA (yellow insulator), 110 termination
OR-KSRCAG*	RCA (green insulator), 110 termination
OR-KSRCABL*	RCA (blue insulator), 110 termination
OR-KSRCAW*	RCA (white insulator), 110 termination
OR-KSBP	Binding posts, pair of speaker terminals (one red, one black)
OR-KSSV	S-Video, 110 termination
OR-KSSVIDC	S-Video, F/F
OR-KSBNC	BNC connector, 50 ohm, F/F
OR-KSBNC75	BNC Connector, 75 ohm, F/F
OR-KSHDMI	HDMI, F/F
OR-KSUBAA	USB 2.0, Type A to A, F/F
OR-KSUBAB	USB 2.0, Type A to B, F/F
OR-KS35STST	3.5mm, audio, screw termination
OR-KS35ST*	3.5mm audio jack, F/F
OR-KSB10*	Blank, package of ten

NOTE: Standard color is fog white. Add -99 for Wiremold ivory. *Also available in -88 cloud white and -13 electrical ivory. For other colors, contact sales.



Designing a pathway system for multi-media needs

Legrand's Wiremold® pathway systems for infloor, perimeter, open space and vertical applications take into consideration and provide the proper space, capacity and bend radius for mixed A/V, data communications and electrical applications. All Wiremold pathways are designed to seamlessly integrate the complete line of TechChoice connectivity for audio, video and data, allowing for an extensive offering of connections to be brought anywhere they are needed.

WORKSTATION



OR-KSS2210

SERIES II® BEZEL

Ortronics® Series II bezel integrates the popular Series II faceplate with all TechChoice connectivity options. This combination allows for a broad range of A/V and data connectivity configurations in one faceplate. Each bezel holds two TechChoice keystone jacks or modules.

PART NO.	DESCRIPTION
OR-KSS2210	Series II bezel (1U) holds two TechChoice keystone jacks or modules

*Also available in Standard fog white, -88, -13 and -99



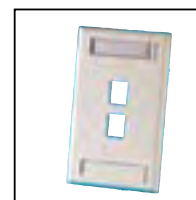
OR-KSFP4V110

VGA FACEPLATES

VGA Faceplates are available in high impact 94V-0 rated thermoplastic. The single gang version includes one integrated VGA connector. The double gang version includes two VGA connectors.

PART NO.	DESCRIPTION
OR-KSFP4V110	Single-gang, holds four keystones, VGA to 110
OR-KSFP4VFT	Single-gang, holds four keystones, VGA with crimp pins
OR-KSFP8V110	Double-gang, holds eight keystones, two VGA to 110
OR-KSFP8VFT	Double-gang, holds eight keystones, two VGA with crimp pins

NOTE: Standard color is fog white. Add -13 for electrical ivory.



OR-KSFP2



OR-KSDS4

FACEPLATES

TechChoice® faceplates are available in high impact 94V-0 rated thermoplastic and stainless steel, with a variety of port capacities to match your workstation applications. All faceplates allow for a flush jack finish.

NOTE: Standard color is fog white. Add -13 for electrical ivory, -88 for cloud white or -99 for Wiremold ivory.

Plastic Faceplates	Stainless Steel Faceplates	DESCRIPTION
OR-KSFP1	OR-KSSS1	Single gang, holds one keystone
OR-KSFP2	OR-KSSS2	Single gang, holds two keystones
OR-KSFP3	OR-KSSS3	Single gang, holds three keystones
OR-KSFP4	OR-KSSS4	Single gang, holds four keystones
OR-KSFP6	OR-KSSS6	Single gang, holds six keystones
OR-KSFP8	OR-KSSS8	Dual gang, holds eight keystones
OR-KSFP12	OR-KSSS12	Dual gang, holds 12 keystones

Plastic Faceplates without Label Fields

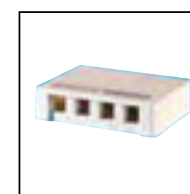
PART NO.	DESCRIPTION
OR-KSFPR1	Single gang with one keystone opening
OR-KSFPR2	Single gang with two keystone openings
OR-KSFPR3	Single gang with three keystone openings
OR-KSFPR4	Single gang with four keystone openings
OR-KSFPR6	Single gang with six keystone openings

Plastic Rectangular GFCI & 106 Frames

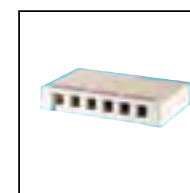
PART NO.	DESCRIPTION
OR-KSDS2	Stylistic rectangular frame with two keystone openings
OR-KSDS3	Stylistic rectangular frame with three keystone openings
OR-KSDS4	Stylistic rectangular frame with four keystone openings
OR-KS106S2	106 style frame with two keystone openings
OR-KS106S4	106 style frame with four keystone openings



OR-KSSMB2



OR-KSSMB4



OR-KSSMB6

SURFACE MOUNT BOXES

TechChoice high impact surface mount boxes accommodate two-, four- or six- port keystone requirements. They are compatible with the Wiremold® Eclipse range of solutions, or can easily be surface installed with supplied screws or double-sided tape. Designation strips and clear covers included.

PART NO.	DESCRIPTION
OR-KSSMB2	Holds two keystones, 2.42" x 2.18" x 1.16"
OR-KSSMB4	Holds four keystones, 4.78" x 3.6" x 1.14"
OR-KSSMB6	Holds six keystones, 6.76" x 3.6" x 1.14"

NOTE: Available in fog white. Product dimensions are listed by length, width and height.



OR-40300630

FURNITURE PLATES

PART NO.	DESCRIPTION
OR-40300630	Holds four keystones, two-piece base and cover, adjustable to fit a range of common furniture openings (2.67"-2.75" x 1.34"-1.41") for 0.065" thick material

NOTE: Standard color is fog white. Add -00 for black.

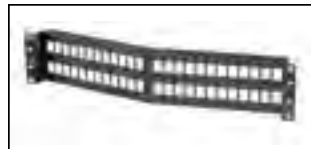
PANELS & CORDS



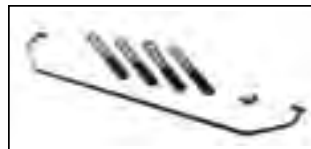
OR-SPA6U48



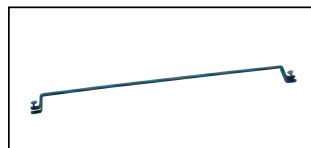
OR-SPA5EU48



OR-SPAKSU48



OR-CMBFRORU



OR-60400046

PATCH PANELS

24- and 48-port TechChoice® patch panels are available in the traditional multi-port panel format with 6-port modules for Cat 6 and Cat 5e. Patch panel kits are also available to support individual keystone jacks: Cat 6, Cat 5e and multimedia (sold separately).



Category 6 with 6-port modules

PART NO.	DESCRIPTION
OR-SP6U24	24-port, T568A/B, height 1.75", 1 rack unit
OR-SP6U48	48-port, T568A/B, height 3.5", 2 rack units
OR-SPA6U24	24-port, angled, T568A/B, height 1.75", 1 rack unit
OR-SPA6U48	48-port, angled, T568A/B, height 3.5", 2 rack units

Category 5e with 6-port modules

PART NO.	DESCRIPTION
OR-SP5EU24	24-port, T568A/B, height 1.75", 1 rack unit
OR-SP5EU48	48-port, T568A/B, height 3.5", 2 rack units
OR-SPA5EU24	24-port, angled, T568A/B, height 1.75", 1 rack unit
OR-SPA5EU48	48-port, angled, T568A/B, height 3.5", 2 rack units

Patch Panel Kit (accepts KS series keystone jacks & modules)

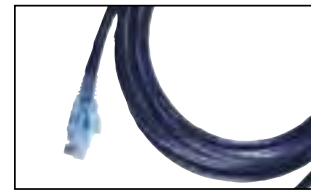
PART NO.	DESCRIPTION
OR-SPKSU24	24-port, height 1.75", 1 rack unit
OR-SPKSU48	48-port, height 3.5", 2 rack units
OR-SPAKSU24	24-port, angled, height 1.75", 1 rack unit
OR-SPAKSU48	48-port, angled, height 3.5", 2 rack units

Wall Mount Racks and Brackets

PART NO.	DESCRIPTION
OR-CMBFRORU	Cable Management Support Bar, Zero RU 19.00"W x 4.00"D
OR-60400046	Cable Management Support Bar, U-Type, 1.5"D, 19"W



OR-SPC5E05-05



OR-SPC607-00

MODULAR PATCH CORDS

TechChoice® patch cords offer a slim design for high density applications and come factory terminated with a snagless boot. Each cable is pre-tested for component performance.

Category 6

PART NO. Single Pack	PART NO. 10 Packs	DESCRIPTION
OR-SPCA603-XX	OR-SPC603-XX	Four pair stranded patch cord PVC, length 3ft
OR-SPCA605-XX	OR-SPC605-XX	Four pair stranded patch cord PVC, length 5ft
OR-SPCA607-XX	OR-SPC607-XX	Four pair stranded patch cord PVC, length 7ft
OR-SPCA610-XX	OR-SPC610-XX	Four pair stranded patch cord, PVC length 10ft
OR-SPCA615-XX	OR-SPC615-XX	Four pair stranded patch cord, PVC length 15ft
OR-SPCA625-XX	OR-SPC625-XX	Four pair stranded patch cord, PVC length 25ft

Category 5e

PART NO. Single Pack	PART NO. 10 Packs	DESCRIPTION
OR-SPCA5E03-XX	OR-SPC5E03-XX	Four pair stranded patch cord PVC, length 3ft
OR-SPCA5E05-XX	OR-SPC5E05-XX	Four pair stranded patch cord PVC, length 5ft
OR-SPCA5E07-XX	OR-SPC5E07-XX	Four pair stranded patch cord PVC, length 7ft
OR-SPCA5E10-XX	OR-SPC5E10-XX	Four pair stranded patch cord PVC, length 10ft
OR-SPCA5E15-XX	OR-SPC5E15-XX	Four pair stranded patch cord PVC, length 15ft
OR-SPCA5E25-XX	OR-SPC5E25-XX	Four pair stranded patch cord PVC, length 25ft

NOTE: Available in the following colors: -XX = -00 Black; -02 Red; -04 Yellow; -05 Green; -06 Blue; -08 Gray; -09 White. Add tailcode to end of part number (example: OR-SPC603-02).

PHYSICAL SUPPORT

Complete cable management maximizes system performance. The right cable management can protect and extend the life of a network. Ortronics® broad selection of cable management products meet all cabling requirements while providing strength and support, and flexibility for today's system design and future expansion.

OR-SVMS706



Standard EIA Equipment Racks and Vertical Managers

OR-19-84-T2SDB	Homaco 2-Post Standard Equipment Rack, 84.00"H x 20.19"W x 15.00"D, rack spaces (1.75") : 45, channel width : 3, load rating : 750 lbs, ship weight : 30 lbs
----------------	--

Standard Vertical Management Cage with Cover

OR-SVMS706	Standard Vertical Cable Management cage with cover, 6.00" x 6.58" x 7', single-sided
OR-SVMS704	Standard Vertical Cable Management cage with cover, 3.75" x 6.58" x 7', single-sided
OR-DVMS704	Standard Vertical Cable Management cage with cover, 3.75" x 13.17" x 7', double-sided
OR-DVMS706	Standard Vertical Cable Management cage with cover, 6.00" x 13.17" x 7', double-sided

Horizontal Managers

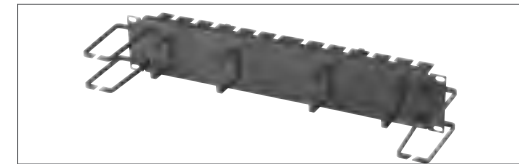
OR-808045590	Cable Management Panel, five horizontal polycarbonate plastic distribution rings, 1.7"H x 6"D, 1 rack unit
OR-60400057	Cable Management Panel, five horizontal polycarbonate plastic distribution rings, 3"H x 4"D, 2 rack units
OR-MM6HM61RU	Mighty Mo® 6 Horizontal Management Panel, Six-port finger spacing, cover, one rack unit (1.75" x 19"), black
OR-MM6HM62RU	Mighty Mo 6 Horizontal Management Panel, Six-port finger spacing, cover, two rack units (3.5" x 19"), black

Mighty Mo 6 Rack and Vertical Manager

PART NO.	DESCRIPTION
OR-MM6706	Mighty Mo 6 Cable Management Rack, 6.5" channel depth, 7' high, black, 45 rack units
OR-MM6VMS706	Mighty Mo 6 Vertical Cable Management Cage, with Cover, 6" x 7" x 7'



OR-19-21-T12DB



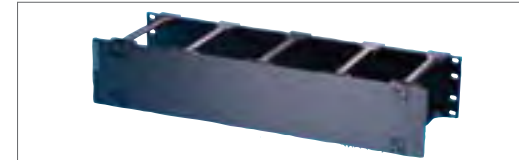
OR-HFM-19-2



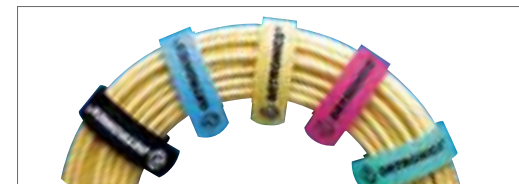
OR-604004301



OR-60400057



OR-MM6HM62RU



OR-7070080

Cable Management Support Bar for Patch Panels

OR-19-21-T25D	Swing-EZ Wall Racks, 21.00"H x 19.75"W x 25.00"D, rack spaces (1.75") : 11, load rating : 75 lbs, ship weight : 30 lbs
OR-19-35-T25D	Swing-EZ Wall Racks, 35.00"H x 19.75"W x 25.00"D, rack spaces (1.75") : 19, load rating : 75 lbs, ship weight : 35 lbs
OR-19-48-T25D	Swing-EZ Wall Racks, 48.00"H x 19.75"W x 25.00"D, rack spaces (1.75") : 26, load rating : 75 lbs, ship weight : 44 lbs
OR-604004301	Hinged Wall Mount Bracket, 19" x 6" x 5.25", 3 rack units
OR-604004396	Hinged Wall Mount Bracket, 19" x 6" x 3.5", 2 rack units
OR-604044927	Wall Mount Shelf, 20" x 4.875" x 18", 120 lbs capacity
OR-HFM-19-2	Cable Management Products for Swing-Ezs, Front rings : vertical 1.75"W x 3.75"D, front rings : horizontal 1.75"H x 1.75"D, back rings : horizontal 2.50"H x 1.62"D, rack spaces (1.75") : 2, ship weight : 5 lbs

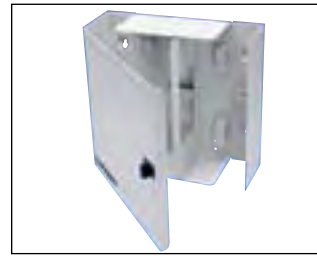
Accessories

OR-60400533	Panel Mounting Screws, #12-24 x .625", package of 50
OR-70700080	Color-coded Cable Management Straps 6"L x .75"W, grip range : .625" to 1.625" diameter
OR-70700079	Color-coded Cable Management Straps, 12"L x .75"W, grip range : 1.25" to 3.25" diameter
OR-MM6BLC	Bend Limiting Clips, 3.25" long for vertical management cages with door or cover

FIBER SOLUTIONS

Ortronics® fiber optic solutions support common, convenient approaches to fiber optic cabling. Our extensive product range offers design flexibility for efficient solutions that offer quality with ease and speed of installation.

For more product selections, please call your local Ortronics representative.



OR-615SMFC-12P

Wall Mount Fiber Cabinet

OR-615SMFC-12P	<ul style="list-style-type: none"> Patch cabinet: Holds two adapter panels ST, SC, FC: 12 fibers High density ST, SC: 24 fibers MT-RJ, LC: 24 fibers LC quad: 48 fibers Open access, 10" x 9" x 3.5", Latching door, 5.5 lbs
OR-615SMFC-24P	<ul style="list-style-type: none"> Patch cabinet: Holds four adapter panels ST, SC, FC: 24 fibers High density ST, SC: 48 fibers MT-RJ, LC: 48 fibers LC quad: 96 fibers 12" x 12" x 3.5", 9.0 lbs



OR-615MMC-18P

Swing-out Shelf

OR-615MMC-18P-00	<ul style="list-style-type: none"> Holds three adapter panels One pivoting drawer ST, SC, FC: 18 fibers LC: 36 fibers High density ST, SC: 36 fibers 1 rack unit 10lbs
------------------	---



EC01U-C



EC02U-C



EC02U-S



EC03U-C



EC04U-C



EC04U-S

TECHCHOICE® RACK MOUNT FIBER ENCLOSURES

All enclosures are supplied with internal bend limiting spools, cable management bend limiters, a fixed front cassette/adapter panel mounting bracket and split removable top covers. The enclosures will accept two splice trays per rack unit. The hardware package also includes rack mount screws and a data label.

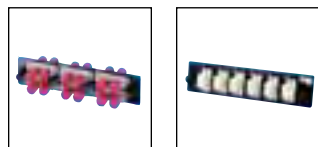
TechChoice Rack Mount Fiber Enclosures

OR-EC01U-C	1 rack unit, black, holds three adapter panels, two splice trays and fixed cassette/adapter panel bracket
OR-EC02U-C	2 rack units, black, holds six adapter panels, four splice trays and fixed cassette/adapter panel bracket
OR-EC03U-C	3 rack units, black, holds nine adapter panels, six splice trays and fixed cassette/adapter panel bracket
OR-EC04U-C	4 rack units, black, holds 12 adapter panels, eight splice trays and fixed cassette/adapter panel bracket
OR-EC02U-S	2 rack units, black, fiber splice enclosure, holds 12 splice trays
OR-EC04U-S	4 rack units, black, fiber splice enclosure, holds 32 splice trays

TechChoice Rack Mount Fiber Enclosure Accessories

OR-ECDL001	Key lock kit for rack mount enclosure
OR-ECDL002	Thumb latch kit for rack mount enclosure
OR-ECBR-001	Cable strain relief bracket
OR-FCWK-01	Cable Management Kit (Includes two cable management bend limiters and four edge protection strips for cable entrance openings)

FIBER SOLUTIONS



OR-0FP-STD12MB OR-0FP-LCD12MB



OR-0FP-SCD12MB OR-0FP-LCQ24MB

Adapter Panels

OR-0FP-BLANK	Adapter Panel, blank panel, black
OR-0FP-STS06NB	Adapter Panel, 6-ST simplex (6 fibers) multimode adapters, phosphor-bronze alignment sleeves
OR-0FP-STD12MB	Adapter Panel, 6-ST duplex (12 fibers) multimode adapters, phosphor-bronze alignment sleeves, beige adapters
OR-0FP-LCD12MB	6-LC duplex (12 fibers) multimode, beige adapters, phosphor-bronze alignment sleeves
OR-0FP-SCD06MB	3-SC duplex (6 fibers) multimode, beige adapters, phosphor-bronze alignment sleeves
OR-0FP-SCD12MB	6-SC duplex (12 fibers) multimode, beige adapters, phosphor-bronze alignment sleeves
OR-0FP-LCQ24MB	6-LC quad (24 fibers) multimode, beige adapters, phosphor-bronze alignment sleeves

NOTE: Additional adapter panels available. Please contact sales at 860-445-3800



OR-85400010

Anaerobic Field Installable Connector Termination Kit

PART NO.	DESCRIPTION
OR-85400010	Contains all tools necessary for complete OptiMo LC, ST and SC anaerobic terminations: contractor bag, micro strip tool, scribe tool, jacket strip tool, scissors, cut length templates, polishing pad, polishing pucks, microscope

NOTE: Consumables: polishing paper, adhesive and primer are sold separately



OR-85400012

Anaerobic Field Installable Connector Multimode Polishing Kit

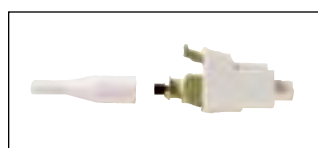
PART NO.	DESCRIPTION
OR-85400012	Consumables necessary for complete OptiMo LC, ST and SC terminations: dry wipes, dispensing tips, syringe, type G polishing paper, type F polishing paper (terminates approx. 100 connectors)



OR-70600021 OR-70600022

Individual Tools and Accessory Items (Anaerobic)

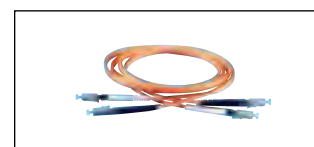
PART NO.	DESCRIPTION
OR-70600021	Adhesive
OR-70600022	Primer



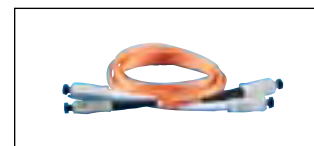
OR-205KAN9GA-MM

Anaerobic Connectors

OR-205KAN9GA-MM	Anaerobic Connectors, LC, multimode, buffer size (µm) 900
OR-205KAN9EA-MM	Anaerobic Connectors, ST, multimode, buffer size (µm) 900
OR-205KAN9FA-MM	Anaerobic Connectors, SC, multimode, buffer size (µm) 900



OR-P1DA2BRGZGZ001M



OR-P1DA2BRFZFZ001M



OR-P1DA2BREZEZ001M

Duplex (2 fiber) Jumpers

OptiMo® Multimode (62.5/125) PC/OFNR, 2mm Zip Cord

DUPLEX, LC-PC TO LC-PC	LENGTH
OR-P1DA2BRGZGZ001M	1 meter
OR-P1DA2BRGZGZ002M	2 meters
OR-P1DA2BRGZGZ003M	3 meters

DUPLEX, SC-PC TO SC-PC	LENGTH
OR-P1DA2BRFZFZ001M	1 meter
OR-P1DA2BRFZFZ002M	2 meters
OR-P1DA2BRFZFZ003M	3 meters

DUPLEX, ST-ST	LENGTH
OR-P1DA2BREZEZ001M	1 meter
OR-P1DA2BREZEZ002M	2 meters
OR-P1DA2BREZEZ003M	3 meters



OR-P1DA6BPAZAZ001M

Space Saver Fiber Optic Cable Assemblies

OptiMo Multimode (62.5/125) PC/OFNR (A-B)

PART NO.	LENGTH
OR-P1DA6BPAZAZ001M	1 meter
OR-P1DA6BPAZAZ002M	2 meters
OR-P1DA6BPAZAZ003M	3 meters

OptiMo Multimode (62.5/125) PC/OFNR (A-A)

PART NO.	LENGTH
OR-P1RA6BPAZAZ001M	1 meter
OR-P1RA6BPAZAZ002M	2 meters
OR-P1RA6BPAZAZ003M	3 meters



OR-SA-DG001

Swing Away Fiber Manager

PART NO.	DESCRIPTION
OR-SA-SG001	Swing Away Fiber Manager, single gang, mud ring and spool
OR-SA-DG001	Swing Away Fiber Manager, dual gang, mud ring and spool

designed to be better.™

Ortronics
125 Eugene O'Neill Drive
New London, CT 06320
800.934.5432

©2010 Legrand All Rights Reserved rev.09|10



Legrand, North America

60 Woodlawn Street
West Hartford, CT 06110
1.877.BY.LEGRAND (295.3472)
www.legrand.us

570 Applewood Crescent
Vaughan, Ontario L4K 4B4
905.738.9195
www.legrand.ca