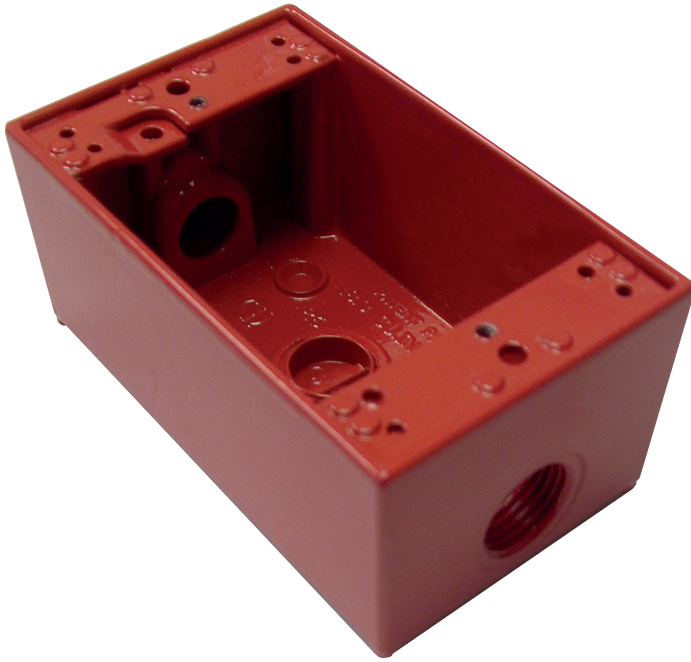


**NO
EXCUSES!**



IGB1



Infinity **Gang Back Box** **Single Gang**

The IGB-1 indoor/outdoor back box is the most versatile of the Infinity IGB back boxes.

Made from heavy duty cast aluminum with a durable powder coat backed on finish (red or white) this indoor/outdoor box will house a single Infinity unit, be it the IAM4Z annunciator through to the more advanced ICMHOA smoke control modules, as well as the IAV Devices. Suitable for mounting in wet locations with proper installation and gasket kit.

Standard Features:

- Dim 2.75" x 4.5" x 2.0" deep
- Heavy duty die cast aluminum (.094 thk.)
- Durable white or red finish
- UL Listed
- Ground screw and 2 close-up plugs supplied with each box
- Pre-tapped ground screw hole
- 1/2" I.P.S. rigid conduit connections one in each end and one on the back

Ordering Information:

Part #	Description
IGB1W	BACK BOX 1 GANG WHITE
IGB1R	BACK BOX 1 GANG RED

Accessories:
Outdoor gasket kit not included with box
Order IGB1WPK



ISO 9001
REGISTERED
COMPANY



INFINITY SERIES
Modular Components

Space Age Electronics, Inc.
www.1sae.com
800.486.1723 Toll Free
508.485.0966 Local
508.485.4740 Fax