

# THE RIGHT SOLUTION.

LiftMaster's full line of access control products and software allows for seamless solutions designed to meet the exact requirements of any property.



HIGH-RISE COMMUNITY  
OR COMMERCIAL SITE



GATED SINGLE  
FAMILY HOME



GATED  
COMMUNITY



MIXED-USE BUILDING  
WITH GARAGE

# SAFETY AND CONTROL WHERE IT MATTERS MOST.

Whether it's a single family home, a gated community or a larger multi-use building, communities of all sizes count on LiftMaster® to provide trusted and reliable access every day. The LiftMaster suite of products seamlessly work together for all your hardware and software needs. Confidently manage access of your community with a LiftMaster solution.



## LIFTMASTER CLOUD™ SMART ACCESS



ENABLES YOU TO MANAGE MULTIPLE ACCESS POINTS AND MULTIPLE PROPERTIES FROM A SINGLE DASHBOARD WITH YOUR COMPUTER, TABLET OR SMARTPHONE FROM ANYWHERE.

### MULTIPLE WAYS TO CONNECT TO LIFTMASTER CLOUD

#### PROACTIVE REMOTE MANAGEMENT

Live, Web-Based Access

#### SECURE CONTROL

Monitoring and Alerts

#### CONTROL EVERY ENTRANCE

With a Single Database

# RESIDENTIAL GATED COMMUNITY.

Our most intuitive access control solution. Whether you need to control multiple entrances or properties, the CAPXL and CAP2D powered by LiftMaster Cloud™ software make it easy to manage day-to-day operations from anywhere. Perfect for retrofit or new installations, this plug and play access control works seamlessly with LiftMaster Gate Operators and Accessories to keep your community moving.



**LIFTMASTER CLOUD™  
SMART ACCESS CONTROL**



**CONNECTED  
ACCESS PORTAL,  
HIGH CAPACITY**  
CAPXL

**CONNECTED ACCESS  
PORTAL, 2-DOOR  
CONTROLLER**  
CAP2D



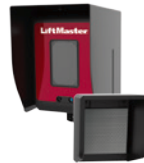
**CELLULAR  
4G/LTE MODEM  
WITH WI-FI®**  
CAPCELL



**SINGLE ENTRY  
ACCESS CONTROL  
KEYPAD AND  
PROXIMITY READER**  
KPR2000



**HIGH-TRAFFIC  
SWING GATE  
OPERATOR**  
CSW24U



**MONITORED  
RETRO REFLECTIVE  
PHOTO EYE**  
LMRRU

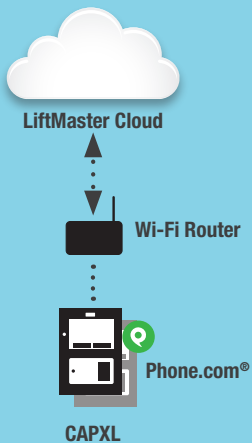


**3-BUTTON PASSPORT  
MAX MINI KEYCHAIN  
REMOTE CONTROL**  
PPK3M

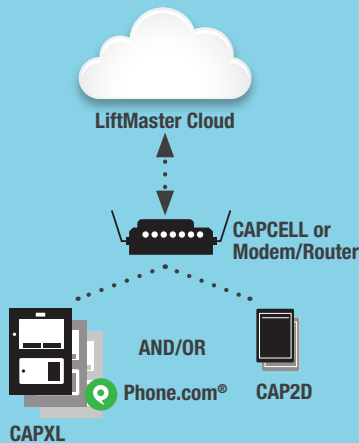
# CONTROL SOFTWARE.

CHOOSE THE EASIEST WAY TO CONNECT FOR VOICE AND LIFTMASTER CLOUD:

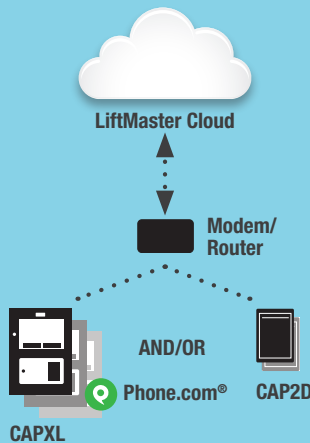
## WI-FI®\*



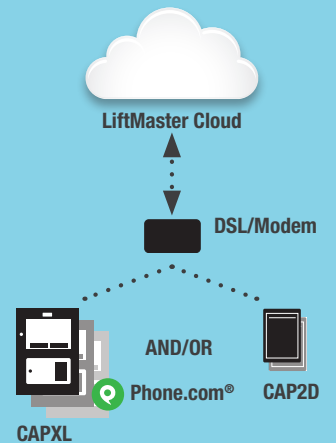
## CELLULAR



## WIRED HIGH-SPEED



## DSL



\*CAPXL only



**LIFTMASTER CLOUD™  
SMART ACCESS CONTROL**



# HIGH-RISE COMMUNITY OR COMMERCIAL BUILDING.

The vibrant, high-definition touchscreen of CAPXL with LiftMaster Cloud™ paired with the ultra-quiet HCTDCU help retain and attract residents while making it easy to manage day-to-day operations from anywhere. Our smart technology features remote diagnostics, email notifications and require nothing to download or sync.



**CONNECTED  
ACCESS PORTAL,  
HIGH CAPACITY**  
CAPXL



**SPECIALTY  
OVERHEAD  
OPERATOR**  
HCTDCU

**CONNECTED  
ACCESS PORTAL,  
2-DOOR CONTROLLER**  
CAP2D

**THROUGH-BEAM  
PHOTO EYE**  
CPSUN4G



**SINGLE ENTRY  
ACCESS CONTROL  
KEYPAD AND  
PROXIMITY READER**  
KPR2000



**WIRELESS  
COMMERCIAL  
KEYPAD**  
KPW250

**1-BUTTON PASSPORT  
LITE MINI KEYCHAIN  
REMOTE CONTROL**  
PPLK1-10



**LIFTMASTER CLOUD™  
SMART ACCESS CONTROL**



# MIXED-USE BUILDING WITH PARKING GARAGE.

An affordable door controller at each entrance provides instant tracking, remote management and resident access control. Ideal when a Telephone Entry System is not required, the CAP2D is easy to install and program from anywhere.



**CONNECTED  
ACCESS PORTAL,  
2-DOOR CONTROLLER**  
CAP2D

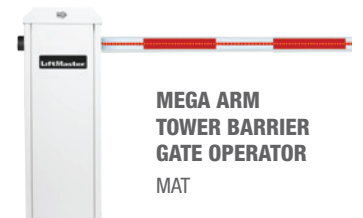


**SINGLE ENTRY  
ACCESS CONTROL  
KEYPAD AND  
PROXIMITY READER**  
KPR2000



**CREDENTIAL  
ACCESS RECEIVER**  
PPWR

**3-BUTTON PASSPORT  
MAX MINI KEYCHAIN  
PROXIMITY REMOTE  
CONTROL**  
PPK3PHM



**MEGA ARM  
TOWER BARRIER  
GATE OPERATOR**  
MAT

# SMALL GATED COMMUNITY.

The EL2000SS and the EL25 are two access solutions featuring cloud database backup. Each offers cost-effective, reliable access and expandability across multiple entry points, while providing the safety and control residential communities desire. The addition of the KPW250 is a great stand-alone solution for residential-only back gate entrances.



**VERSA BACKUP  
CLOUD STORAGE**



**TELEPHONE  
ENTRY/ACCESS  
CONTROL SYSTEM**  
EL2000SS



**WIRELESS  
COMMERCIAL  
KEYPAD**  
KPW250

**TELEPHONE  
ENTRY/ACCESS  
CONTROL SYSTEM**  
EL25

**3-BUTTON PASSPORT  
MAX VISOR REMOTE  
CONTROL**  
PPV3M



**CREDENTIAL  
ACCESS RECEIVER**  
PPWR



**RESIDENTIAL  
SLIDE GATE  
OPERATOR**  
RSL24U

**MONITORED  
RETRO REFLECTIVE  
PHOTO EYE**  
LMRRU



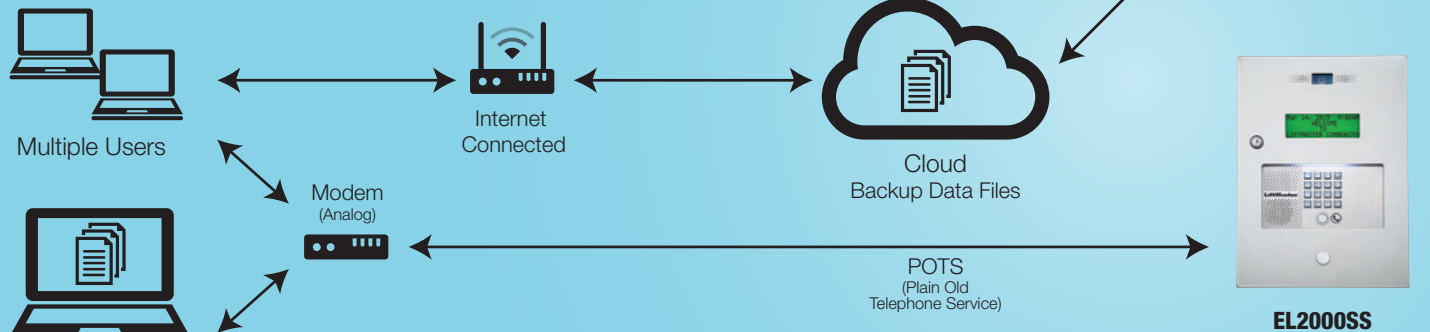
**MONITORED  
SMALL PROFILE  
RESISTIVE EDGE  
WITH ALUMINUM  
CHANNEL 5 FT.**  
S505AL

# VERSA XS SOFTWARE.

## ACCESS CONTROL MANAGEMENT FOR THE EL2000SS AND EL25 WITH NEW USER INTERFACE

### Cloud Storage Option

Data stored in the Cloud, internet connection required (multiple PCs)



### Stand-Alone User

### Stand-Alone Option

Data stored locally, no internet connection required (one PC only)



## GATED SINGLE FAMILY HOME.

The quick and easy intercom solution that lets homeowners operate their gate from inside their home without adding additional costs to their phone bill. The EL1SS is a durable, economical solution that ensures added convenience and control from the gate to the garage. Also use MyQ® technology to control both the gate and garage door openers.



**TELEPHONE INTERCOM AND ACCESS CONTROL SYSTEM**  
EL1SS



**INTERNET GATEWAY**  
828LM

**RESIDENTIAL LINEAR ACTUATOR SWING**  
LA500PKGU



**MONITORED RETRO REFLECTIVE PHOTO EYE**  
LMRRU



**SECURITY+ 2.0® 3-BUTTON REMOTE CONTROL**  
893MAX



**SOLAR PANEL**  
SP10W12V



**ELITE SERIES® DC BATTERY BACKUP BELT DRIVE WI-FI® GARAGE DOOR OPENER**  
8550W



## STAND-ALONE ENTRANCE.

Our wireless keypad solutions provide convenient access for one or more entrances without trenching wires. They can also be paired with a remote control.



**WIRELESS COMMERCIAL KEYPAD**  
KPW250



**COMMERCIAL ACCESS RECEIVER**  
STAR1000  
**1-BUTTON PASSPORT LITE REMOTE CONTROL**  
PPVL1-10



**COMMERCIAL SLIDE GATE OPERATOR**  
CSL24U  
**MONITORED RETRO REFLECTIVE PHOTO EYE**  
LMRRU



**MONITORED SMALL PROFILE RESISTIVE EDGE WITH ALUMINUM CHANNEL 5 FT.**  
S505AL

# LIFTMASTER SERVICE AND SUPPORT.

We at LiftMaster® are proud of the suite of products we have to offer, and want you to know we are your trusted partner before, during and after your purchase.

## SALES SUPPORT

Our sales team is available to guide you to the proper products, or help design a customized solution to meet any and all application needs.

**Phone:** 800.282.6225

## LIFTMASTER DEALER EXTRANET

For all of our LiftMaster customers, visit the Dealer Extranet at **Dealer.LiftMaster.com** for order status, technical support, collateral material, account-specific tools and other support materials.

## CUSTOMER CARE

Our LiftMaster Customer Care representatives are here to help you with account-specific questions, from order placement to order status.

**Phone:** 800.323.2276

**Email:** [Customer.Service@LiftMaster.com](mailto:Customer.Service@LiftMaster.com)

## TECHNICAL SUPPORT CENTER

Numerous resources are available to assist with answering your pre- and post-sale technical product questions, from specifications, to installation, to operational troubleshooting.

**Phone:** 800.528.2806

**Website:** [LiftMasterDealer.custhelp.com/app/ask](http://LiftMasterDealer.custhelp.com/app/ask)

## ONLINE SUPPORT

Find links to user manuals, service bulletins, support videos and our extensive product knowledge base for how-to documents at **LiftMaster.com/Customer-Support**

Conveniently find FAQs to all your technical product needs.

## LIFTMASTER TRAINING ACADEMY

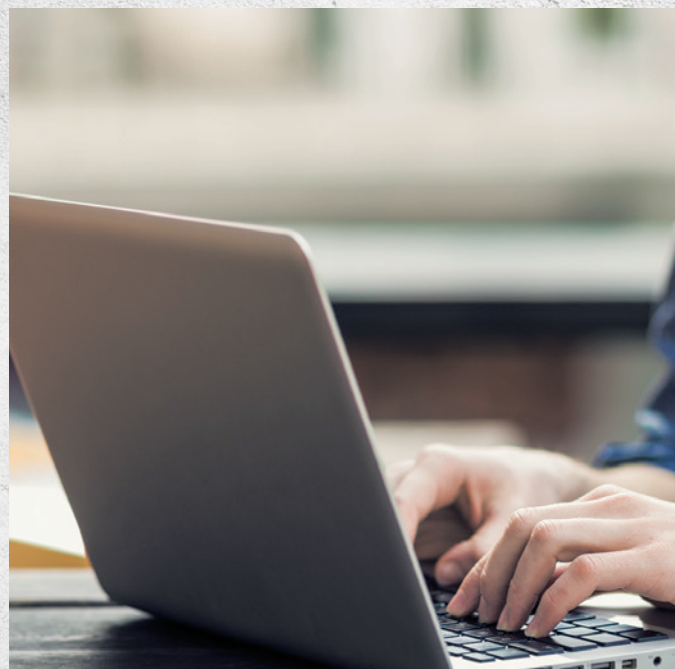
Educational tools and materials are available for our customers on all of the LiftMaster product offerings, safety standards and industry trends. Online training, regional seminars, online webinars and dedicated training events are available by contacting us.

**Online:** [LiftMasterTraining.com](http://LiftMasterTraining.com)

**Email:** [TrainingAcademy@LiftMaster.com](mailto:TrainingAcademy@LiftMaster.com)

**Phone:** 877.872.4650

**For Complete Information on Our Products and Software Solutions visit [LiftMaster.com/TOTALPAS](http://LiftMaster.com/TOTALPAS)**



# ACCESS CONTROL PRODUCT SPECIFICATIONS.

FEATURE	CAPXL	CAP2D	EL2000SS	EL25	EL1SS
<b>SYSTEM FEATURES</b>					
Cloud Connected	Yes	Yes	Data Backup	Data Backup	No
Real-Time Event Monitoring	Yes	Yes	No	No	No
Text/Email Notifications	Yes	Yes	No	No	No
Local Event History	50,000	6,000	4,000	4,000	No
Local Resident/Programmable Entry Code Capacity	50,000	25,000	2,000	2,000	No Directory/ 200 Entry Codes
Voice Communication	Wi-Fi/Cellular/Wired High-Speed Internet/DSL	N/A	POTS/Filtered DSL	POTS/Filtered DSL	Intercom/ POTS/Filtered DSL
Data Connectivity	Wi-Fi/Cellular/Wired High-Speed Internet/DSL	Cellular/Wired High-Speed Internet/DSL	Dial-up Modem/ Direct Connect/Keypad	Dial-up Modem/ Direct Connect/Keypad	Keypad
Software	LiftMaster Cloud	LiftMaster Cloud	Versa XS 4.0	Versa XS 4.0	None
<b>BASIC INPUT/OUTPUT</b>					
Wiegand Inputs	4	2	Up to 4 Wiegand inputs, with 2 (optional) plug-in modules (Part #WOMODKT)	Up to 4 Wiegand inputs, with 2 (optional) plug-in modules (Part #WOMODKT)	None
Gate/Doors of Control	4	2	4	4	2
Additional Gate/Door Expansion	Virtually unlimited	Virtually unlimited	Shared telephone line for 7 units	Shared telephone line for 7 units	None
Radio Receiver	Security+ 2.0® Passport	Optional Security+ 2.0 PPWR	Optional Security+ 2.0 PPWR	Optional Security+ 2.0 PPWR	None
<b>PANEL</b>					
Display Type	10" High-Def Touch Display	None	Monochromatic 5" screen; 4 display lines, 20 characters/line	None	None
Postal Lock	Built-in	None	Built-in	None	None
Camera Ready	Yes	No	Yes	Yes	None
Mounting Options	Surface/Flush/ Goose-neck	Surface/Standard Gang Box	Surface/Flush/Gooseneck	Surface/Gooseneck	Surface/Gooseneck
Temperature Range	-20°F to 130°F (-29°C to 54°C)	32°F to 125°F (0°C to 52°C)	-4°F to 149°F (-20°C to 65°C)	-4°F to 149°F (-20°C to 65°C)	-4°F to 149°F (-20°C to 65°C)
Height	18 in.	4.5 in.	16 in.	10.25 in.	6.25 in.
Width	14 in.	3 in.	11.25 in.	6 in.	10 in.
Depth	4.5 in.	1.25 in.	3.25 in.	4 in.	5.25 in.
Warranty	2 year	2 year	2 year	2 year	2 year