

1701Plus Configuration Tool Manual

Contents

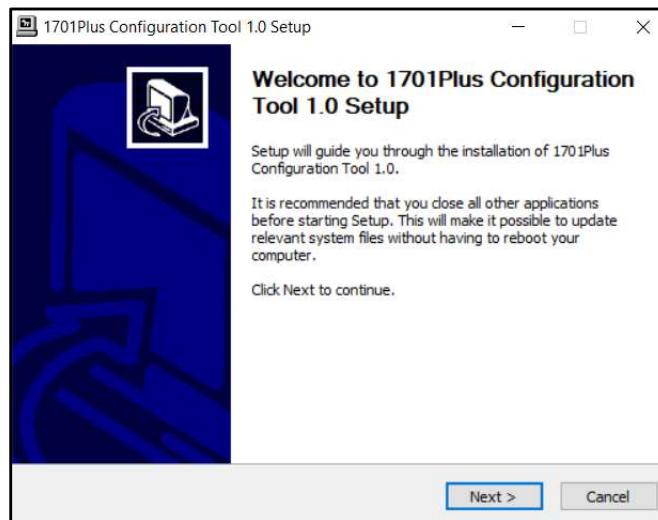
1. Introduction	2
2. Installation	2
3. 1701Plus Configuration Tool.....	4
3.1 Adapter menu	4
3.2 Configuration menu	5
3.3 Tool Settings menu	6
3.4 Help menu.....	7
4. Troubleshooting.....	8

1. Introduction

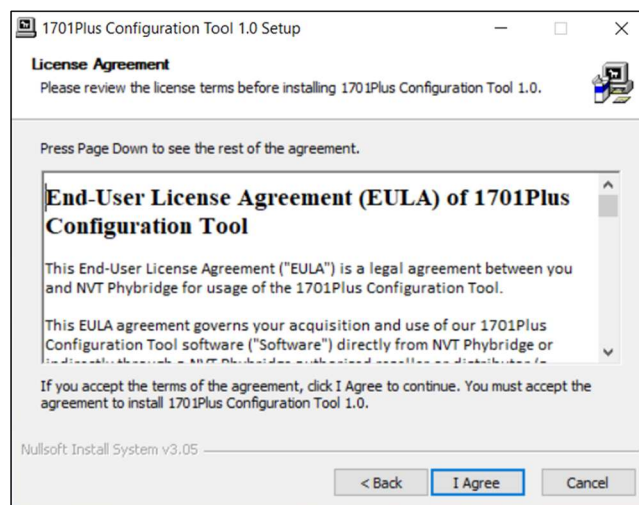
The NVT Phybridge 1701Plus Configuration Tool will allow you to configure separate groups of 1701Plus by configuring the password for each group. This program will also allow you to create the logical topology of each group. You can download the application on the NVT Phybridge website.

2. Installation

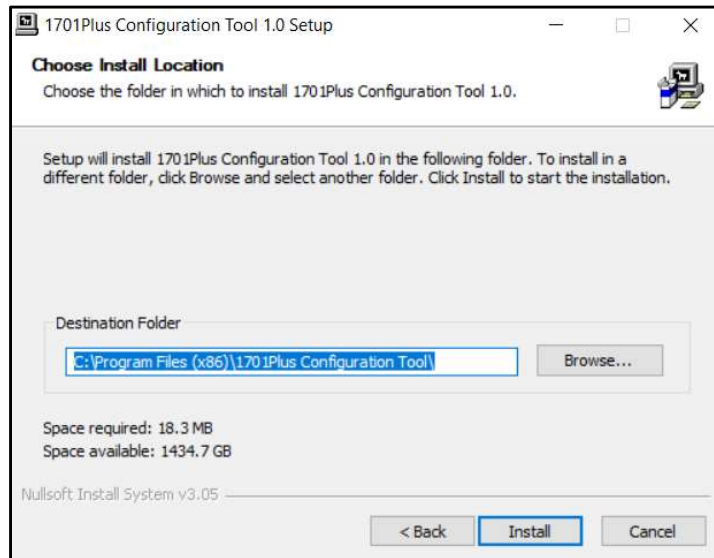
1701Plus Configuration Tool is a Windows application. To install the application, download from our website and run 1701PlusConfigurationTool_setup.exe. Installation process is as below.



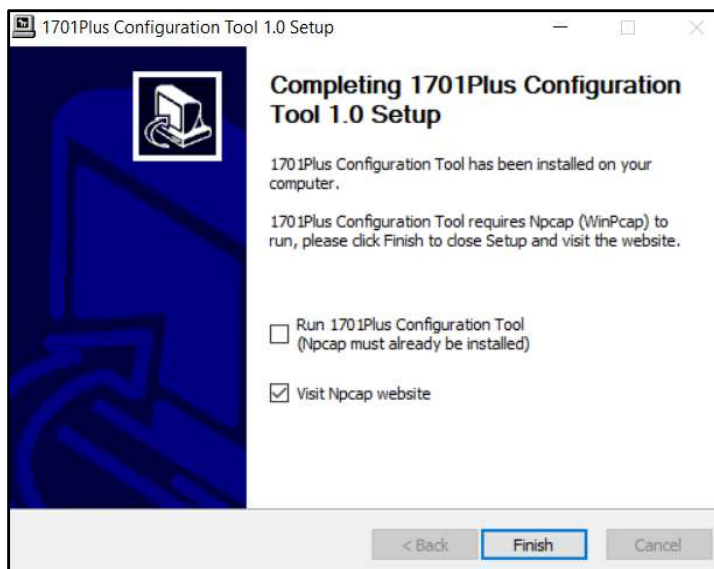
- End User License Agreement
Please read the agreement and click "I agree" to install the tool.



- Choose Install Location
Specify the target folder of 1701Plus Configuration Tool.



- Final page
1701Plus Configuration Tool requires Npcap (or WinPcap) to run. If it is not installed on your PC, please visit [Npcap website](#) to download. If it is already installed, then you can run 1701Plus Configuration Tool.

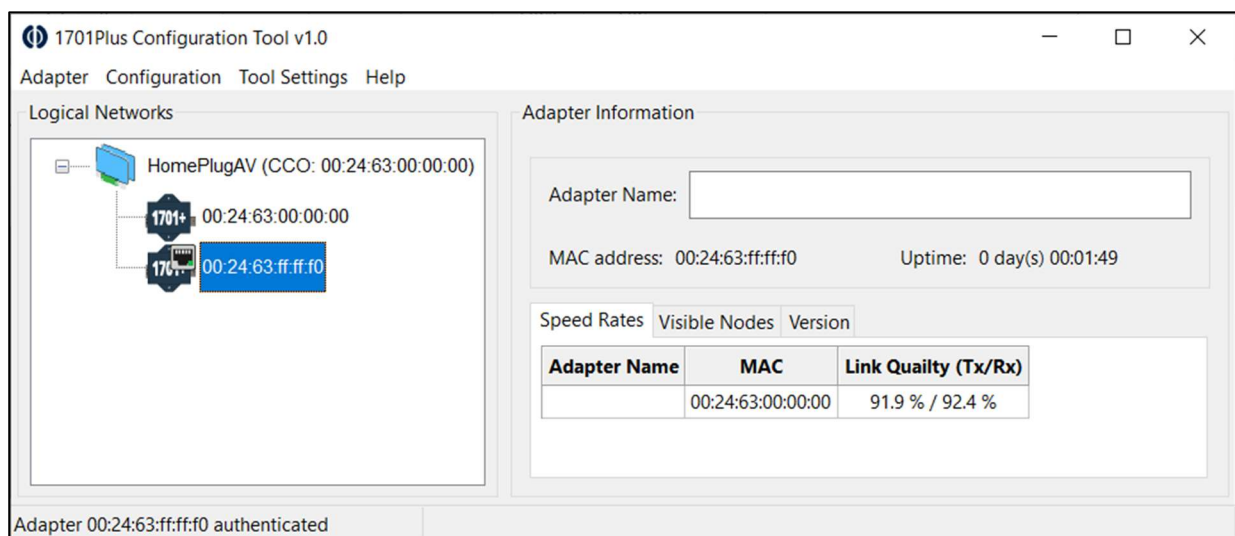


3. 1701Plus Configuration Tool

Click the local device  or remote device  to configure in Logical Networks pane. You can see the details in Adapter Information by clicking Speed Rates, Visible Nodes and Version tabs.

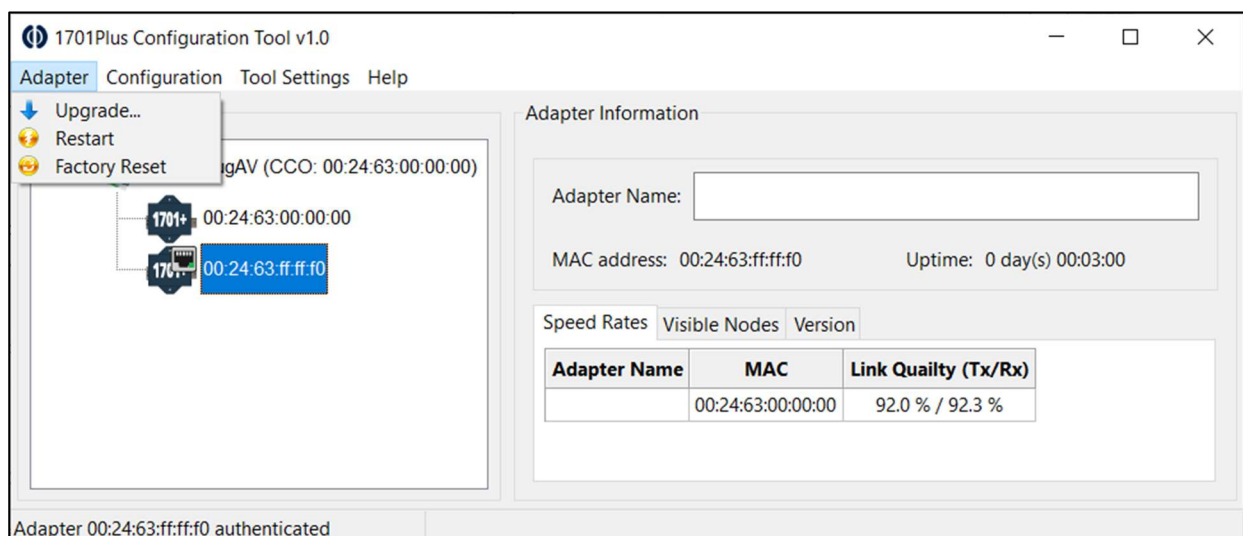
1701Plus Configuration Tool has the following menu items:

- Adapter: Contains items to execute actions related to adapters such as Upgrade and Reset.
- Configuration: Contains items to configure adapter's settings such as HFID and network.
- Tool Settings: Contains the item to set network interfaces.
- Help: Contains about the 1701Plus Configuration Tool information.



3.1 Adapter menu

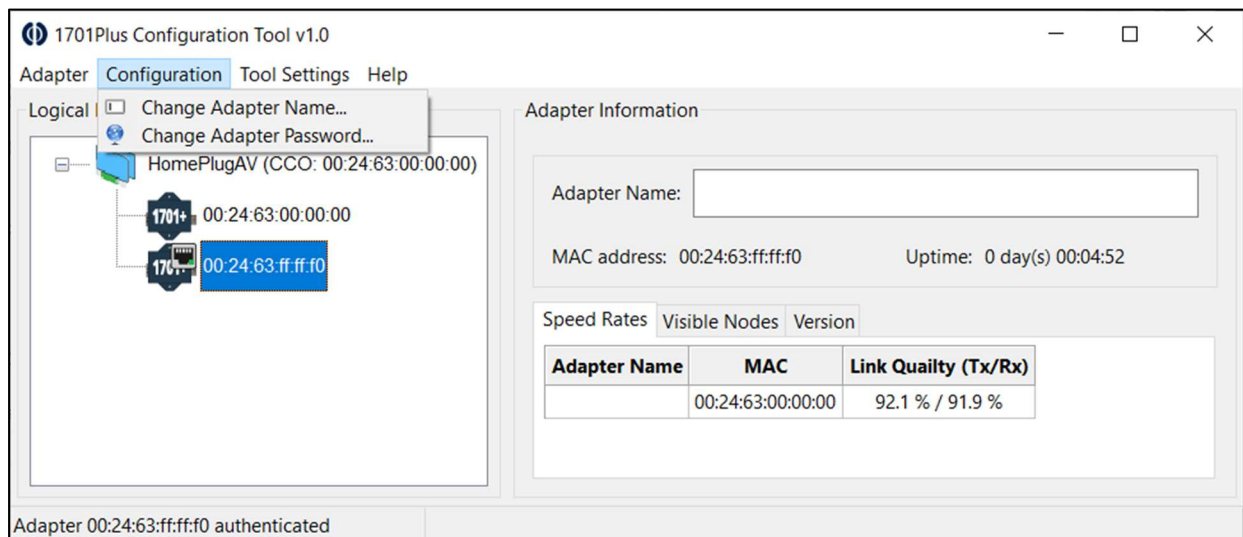
Adapter menu is as below. It has 1701Plus device related menus.



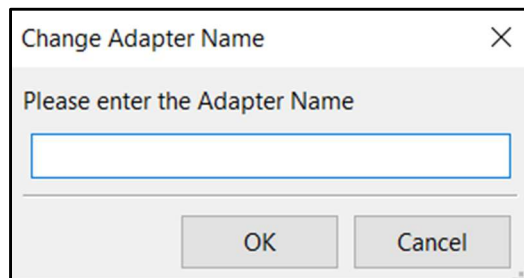
- Upgrade:
 - o Upgrade the authenticated adapter from a binary image(ggl file) provided by NVT Phybridge.
- Restart:
 - o Restart the authenticated adapter.
- Factory Reset:
 - o Performs a factory reset on the authenticated adapter to factory defaults.

3.2 Configuration menu

Configuration menu is as below.

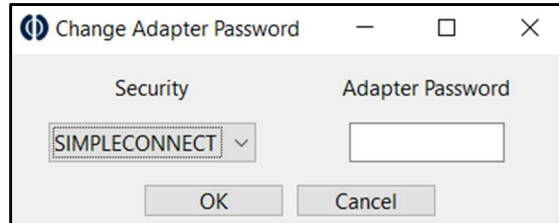


- Change Adapter Name: To change adapter’s Human Friendly Identifier (HFID). HFID can be configured as a nickname. Once configured, the HFID is displayed in the Logical Networks pane, next to its MAC address.



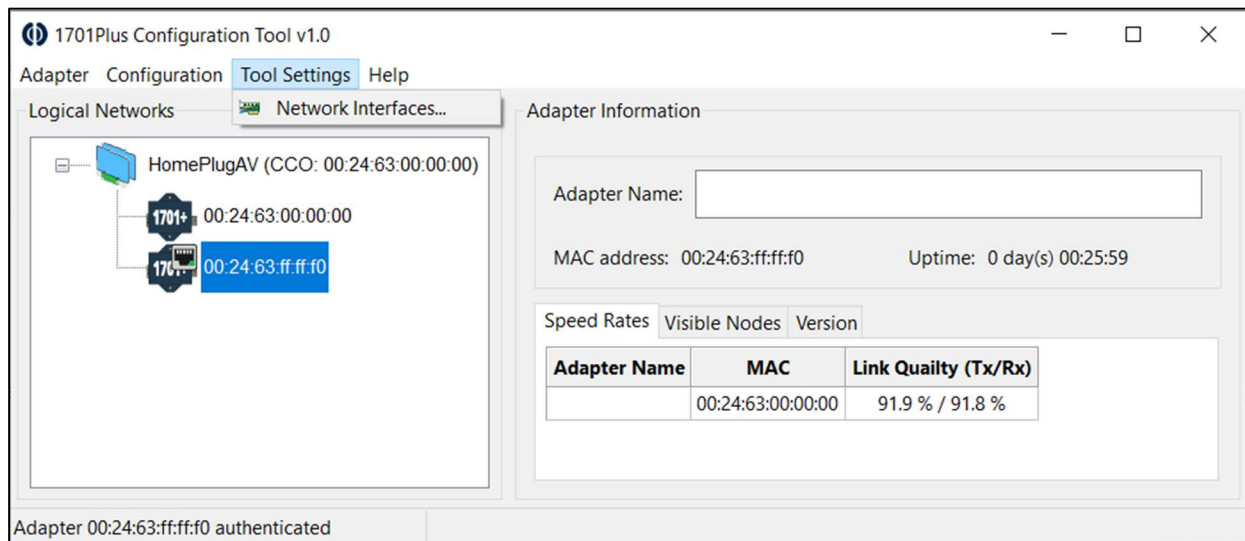
- Change Adapter Password: To change the adapter’s network password. Only adapters sharing the same network password can communicate. Please make sure to change the remote unit password first.

There are 2 modes of security: a) SIMPLECONNECT allows the operation of simple-connect functionality (pushbutton pairing) after the network password has been changed, and b) SECURE operation mode disables the operation of simple-connect functionality (pushbutton) after the network password has been changed.

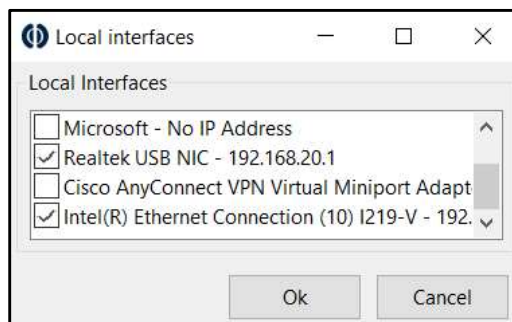


3.3 Tool Settings menu

Tool Settings menu is as below.

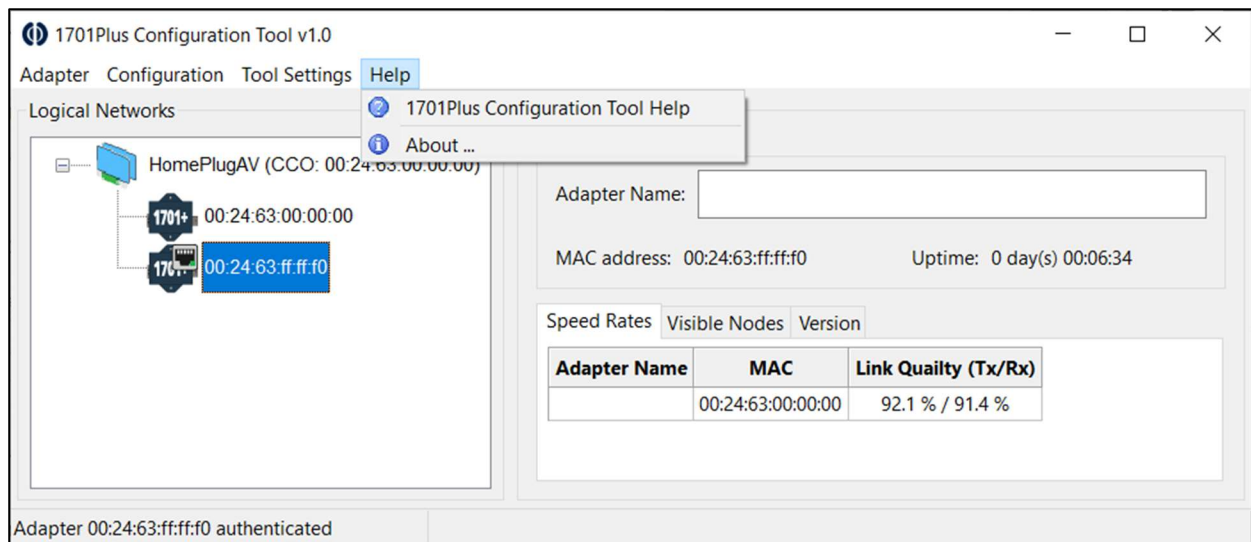


- Network Interfaces... : This menu is to let the user enable/disable local network interface cards(NIC)
 - o Select all the interfaces that 1701Pluses are connected to. If you are not sure, select all.



3.4 Help menu

Help menu is as below.



- 1701Plus Configuration Tool Help:
 - o This help document will be shown in chm file format.
- About:
 - o Displays the application's version information.

4. Troubleshooting

1701Plus Configuration Tool is not running:

- You should remove all other versions of winpcap, npcap, and win10pcap as old versions will cause this to not work.

1701Plus Configuration Tool is not running with the message that some .DLLs are missing:

- This is due to missing libraries. Download the missing libraries and try again.

Remote 1701Pluses are not shown:

- Make sure that the remote 1701Pluses are connected to the head-end 1701Plus and the lights are on.
- Reset the 1701Plus base unit to its factory default.

Local 1701Pluses are not shown in Logical Networks pane:

- Make sure that the 1701 is receiving power and the blue power light and green RJ45 lights are on.
- Make sure that there is an ethernet cable going from the head-end 1701Plus to your computer/laptop.
- Click Tool Settings -> Network Setting in the menu and select the ethernet interfaces that the devices are connected. You may need to restart the program if the interfaces are not listed. See [3.3 Tool Settings menu](#).
- Open "Network Connections" in Windows (Settings -> Network & Internet -> Change adapter option) and make sure that the ethernet interface that 1701Plus is connected to is enabled. If it is already enabled, then try to disable and enable it.