

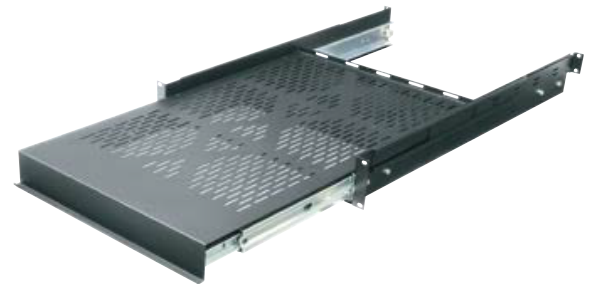
SSHD Series

Heavy-Duty Sliding Shelf

accommodates permanent rental
equipment and fixed applications

features:


- Deep full extension shelf allows for easy maintenance of your components right on the shelf
- Durable black finish
- Heavy-duty version, 2 rackspace with 200 lb. load capacity



specifications:

EIA/TIA compliant heavy-duty sliding shelf shall be Middle Atlantic Products model # SSHD-28. Sliding shelf area shall be 16.98" W x 28.1" D. Sliding shelf shall require 4 point mounting, and have a mounting range of 21.1" to 35.2". Sliding shelf shall occupy 2 rackspace, with a shelf height of 2.4". Maximum weight capacity shall be 200 lbs. Sliding shelf shall be manufactured by an ISO 9001 and ISO 14001 registered company. Sliding shelf shall be warranted to be free from defects in material or workmanship under normal use and conditions for a period of three years.

what **great systems** are built on.™

A Group brand |  legrand

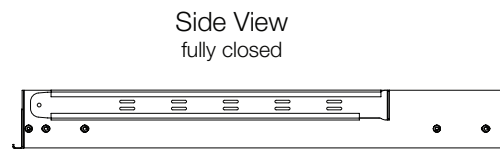
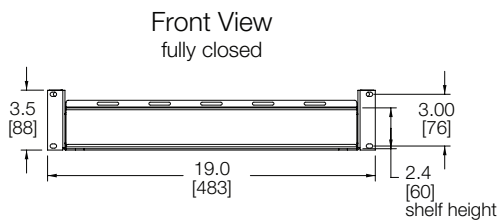
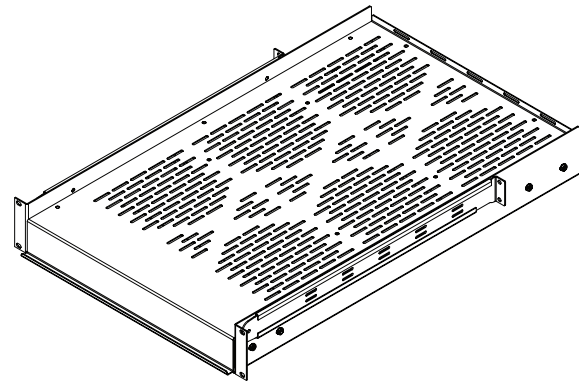
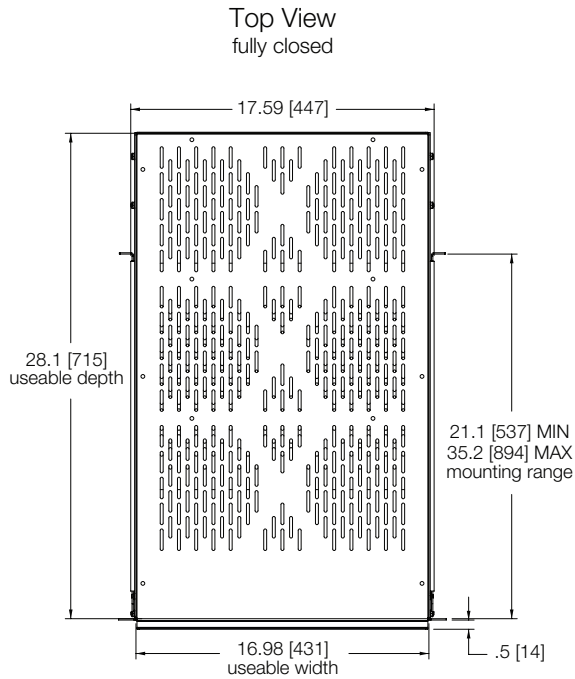

Middle Atlantic Products
middleatlantic.com | middleatlantic.ca

96-01169 / rev c / 5-26-20

SSHHD Series

basic dimensions

all dimensions in inches unless otherwise noted [all dimensions in brackets are in millimeters]



Notes:

1. Dimension format shown in: INCHES [mm]
2. Weight capacity: 200 lbs. [90.7 kg]
3. Shelf, slides out 28 in. [711]

what **great systems** are built on.™