



Vertiv™ Liebert®

PS15 UPS

High Performance Line
Interactive UPS for Critical
Network Power Protection



Liebert PSI5 is a compact, Automatic Voltage Regulation (AVR) line-interactive UPS system designed especially for IT applications such as network closets and small data centers.

The Liebert PSI5 UPS supports advanced pure sine wave output on battery to safeguard critical IT equipment and business electronics. It also provides reliable power protection for servers, critical nodes, network workstations, large network peripherals, network routers, bridges, and other electronic equipment. With 3 different form-factors available, the Liebert PSI5 has been designed to ensure power continuity for a wide array of applications.

Ideally suited for

- Servers
- Network Closets
- Safety and Security systems
- Network Workstations
- Large Network Peripherals
- Storage
- VoIP
- Media Closet Equipment
- POS Systems

2U Rack/Tower (800VA - 5000VA)



- Convertible rack/tower design with rotatable LCD display provides flexible installation options
- Extended runtime capability with external battery cabinets for hours of back-up time
- Vertiv Intellislot SNMP/Webcards available for remote power management, and environmental sensor support

1U Rack Mount (1000VA, 1500VA)



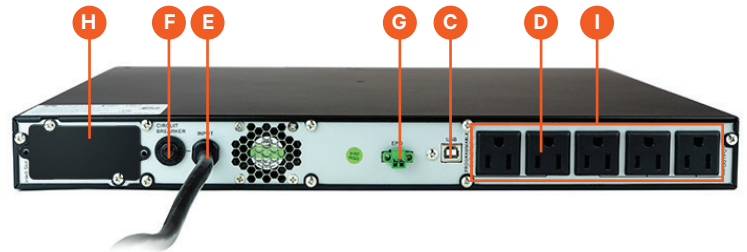
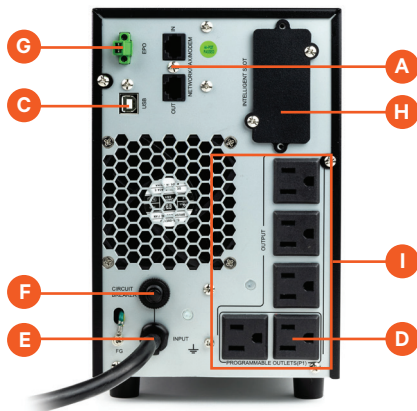
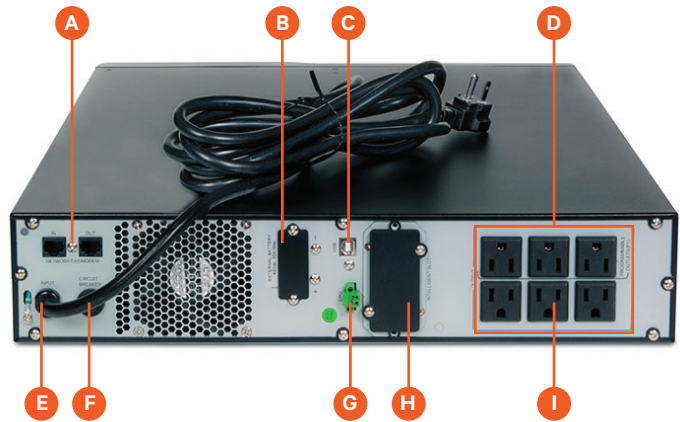
- Compact 1U Rack Mount design for applications with limited rack space
- Comes with rack mounting hardware included
- Vertiv Intellislot SNMP/Webcards available for remote power management, and environmental sensor support

Mini Tower (750VA, 1100VA, 1500VA)



- Compact Mini Tower design for tower servers and/or applications with no available rack
- Plug and play solution requiring no installation
- Vertiv Intellislot SNMP/Webcards available for remote power management, and environmental sensor support

- A** RJ-45 Data Line Surge Connectors
- B** Extended Runtime Battery Connection
- C** USB Port
- D** Programmable Outlet Group
- E** Input Power Cord
- F** Input Circuit Breaker
- G** Emergency Power Off (EPO) Connector
- H** Liebert IntelliSlot® Port Optional (Communications Card)
- I** Output Receptacles



Reliable UPS protection to keep your network up and running

The flexible design of the Liebert® PSI5 allows the UPS to be tower (MT models), 1U rack mountable (1U models), or to be configured as a self-standing tower or to be rack-mounted within a 2U space (RT models). It is available from 750VA to 5000VA with both 120V or 208V models.

The Liebert PSI5 UPS features an innovative advanced line-interactive design incorporating buck/boost Automatic Voltage Regulation (AVR) technology.

This protects against utility voltage fluctuation by raising and lowering utility power to the level needed by the connected equipment. It also allows the UPS to prolong battery life by maximizing its time on utility power before going to battery.

With high efficiency and 0.9 power factor operation, the Liebert PSI5 will meet your critical application needs. You can rest assured that your business is protected with this Vertiv solution, which includes a standard, two-year advanced exchange product warranty.

What's In The Box

- UPS Unit
- USB Type A to USB Type B cable 1.8 meter (6ft) in length
- Printed quick start guide with safety instructions
- Adjustable 4 post rack mounting kit (not included with Mini Tower)
- Support base for tower configuration (2U Rack/Tower Models Only)
- Power Insight Management software (free download from Vertiv.com)

High Availability

0.9 Output Power Factor: More usable power enables more connected loads saving space and costs

Wider Input Voltage Window: Prolongs battery life by allowing the UPS to maximize the use of utility power before transferring to battery when input exceeds specified limits (76 to 146 VAC @120V)

Full Sequenced Battery Testing: The Liebert® PSI5 UPS includes an automatic and manual self-diagnostic test feature. This provides a comprehensive analysis of the condition of the batteries within the UPS and will notify you when the internal batteries need to be replaced.

Advance Early Warning of UPS System Status: The Liebert PSI5 UPS offers multiple audible and visual alarms to immediately alert you to an input voltage fluctuation (buck/boost), output overload, low battery or replace battery condition.

Flexibility

Up to Seven Battery-Backed Outlets: Allows the Liebert PSI5 to be more flexible in accommodating additional equipment to be connected to the UPS via the receptacles.

Configurable Input Voltage Window: Allows the UPS to be properly matched to the incoming utility power and adjusts its input window and transfer points to supply regulated power to connected loads within the selected range.

Programmable Outlet Group: Power cycle connected equipment and load shed on battery to extend run time.

Hot Swappable Batteries: Increase product life and provide prolonged UPS reliability. Batteries are conveniently located behind the front bezel of the unit (RT models) or from the bottom (tower models).

Manageability

USB Communications: Power management functions provide monitoring of UPS status and manage the automatic orderly shutdown of the computer if a power outage ever exceeds the battery capacity of the UPS. *Trellis™* Power Insight Shutdown Software is available at Vertiv.com.

SNMP Communication Option: Add an optional Liebert® IntelliSlot® IS-UNITY communications card to enable SNMP and web-based management for the Liebert PSI5 UPS. The Liebert IntelliSlot UNITY communication cards provide network integration connectivity and allow you to monitor and control your UPS from your network management station or any PC.

- Sends both SNMP traps and emails for event notification
- Auto-senses 10M/100M Ethernet
- Compatible with shutdown software to ensure graceful computer shutdown
- IS-UNITY-DP Communications Card also support Vertiv Liebert SN Series, Environmental Sensors
- Allows remote monitoring, start-up or restart for connected equipment.
- Select models include factory integrated network management card

Remote Emergency Power Off: Allows the UPS to be remotely shut down during an emergency.

Optional Liebert MicroPOD Output Distribution and Maintenance Bypass Module

When your computer system can't be without power, even for scheduled UPS maintenance, the Liebert MicroPOD ensures continuous uptime. It allows you to manually transfer connected equipment to utility power permitting scheduled service or UPS replacement without the need to shut down connected equipment.

Features include:

- 2U height minimizes rack space requirements
- Installs with plug-and-play ease

MicroPOD - Maintenance bypass and output distribution

The Liebert® MicroPOD (Power Output Distribution) is a maintenance bypass option for UPS products, 3 kVA and below. It allows removal of the UPS without powering down the connected equipment. The 2U POD's can be installed on the floor or mounted to a Liebert PSI5 using the included mounting brackets.

| UPS VA rating | POD model number | Output receptacles | Plug to utility |
|----------------|------------------|--|-----------------|
| 500-1500VA UPS | MP2-115HW | Hard Wired | Hardwired |
| | MP2-115A | 8 x 5-15R | 5-15P |
| 2000VA UPS | MP2-120HW | Hard Wired | Hardwired |
| | MP2-120C | 8 x 5-15/20R | 5-20P |
| | MP2-120E | 4 x 5-15/20R; 1 x L5-20R | 5-20P |
| 3000VA UPS | MP2-130HW | Hard Wired | Hardwired |
| | MP2-130C | 8 x 5-15/20R | L5-30P |
| | MP2-130E | 2 x 5-15/20R; 1 x L5-30R; 4 x 5-15/20R | L5-30P |
| | MP2-130P | 4 x 5-15R; 2 x L5-20R | L5-30P |

UPS Specifications for 2U Rack/Tower Models



| Standard Models* | PSI5-800RT120 | PSI5-1100RT120 | PSI5-1500RT120 | PSI5-2200RT120 | PSI5-3000RT120 | PSI5-5000RT208 |
|---|---|---|---|---|---|---|
| Power Rating, VA/W | 800VA/720W | 1100VA/990W | 1500VA/1350W | 1920VA/1920W | 2880VA/2700W | 4250VA/3825W |
| Dimensions, W X D X H, IN (MM) | | | | | | |
| Unit | 17.2 x 16.1 x 3.5 (438 x 410 x 88) | 17.2 x 16.1 x 3.5 (438 x 410 x 88) | 17.2 x 20 x 3.5 (438 x 510 x 88) | 17.2 x 24.8 x 3.5 (438 x 630 x 88) | 17.2 x 24.8 x 3.5 (438 x 630 x 88) | 17.2 x 24.8 x 3.5 (438 x 630 x 88) |
| Shipping | 10.2 x 22.9 x 21.7 (258 x 582 x 550) | 10.2 x 22.9 x 21.7 (258 x 582 x 550) | 10.2 x 26.5 x 21.7 (258 x 672 x 550) | 10.2 x 26.7 x 21.7 (258 x 782 x 550) | 10.2 x 26.7 x 21.7 (258 x 782 x 550) | 10.2 x 26.7 x 21.7 (258 x 782 x 550) |
| Weight, LB (KG) | | | | | | |
| Unit | 28.4 (12.9) | 29.5 (13.4) | 42.6 (19.3) | 59.1 (26.8) | 70.8 (32.1) | 87.7 (39.8) |
| Shipping | 32.2 (16.9) | 37.9 (17.2) | 51.8 (23.5) | 70.1 (31.8) | 81.8 (37.1) | 98.8 (44.8) |
| Input/Output AC Parameters | | | | | | |
| Nominal Voltage Setting | 100/110/115/120(default) / 125 | | | | | 200/208/220/230/240 |
| Voltage Range Without Battery Operation | 75 to 146 VAC | 75 to 146 VAC | 75 to 146 VAC | 75 to 146 VAC | 75 to 146 VAC | 150 to 281 VAC |
| Frequency Range | 55-65Hz (57-63Hz Battery to Normal comeback) | | | | | |
| Surge Protection | 1372J | 1372J | 1372J | 1372J | 1372J | 2064J |
| Input Power Cord, 10ft (3m) Attached | NEMA 5-15 | NEMA 5-15 | NEMA 5-15 | NEMA L5-20 std 5-20 adapter included | NEMA L5-30P | NEMA L6-30P |
| Output Receptacles – Not Controllable | (3) NEMA5-15R | (3) NEMA5-15R | (3) NEMA5-15R | (3) NEMA5-15/20R, (1) NEMAL5-20R | (3) NEMA5-15/20R, (1) NEMAL5-30R | (3) L6-30R |
| Output Receptacles – Controllable | (3) NEMA5-15R | (3) NEMA5-15R | (3) NEMA5-15R | (3) NEMA5-20R | (3) NEMA5-20R | (1) NEMAL6-30R |
| Transfer Time | 4-6 ms Typical | | | | | |
| Battery Waveform | Pure Sinewave | | | | | |
| Power Rating, VA/W | 800VA/720W | 1100VA/990W | 1500VA/1350W | 1920VA/1920W | 2880VA/2700W | 4250VA/3825W |
| Battery Parameters | | | | | | |
| Type | Valve-regulated lead-acid (VRLA) in compliance with UL 1989 | | | | | |
| Recharge Time | 4 hours to recover 90% | | | | | |
| Internal Battery Run Time | | | | | | |
| Full Load | 5.5 min | 4.5 min | 6.0 min | 5.0 min | 5.5 min | 3.0 min |
| Half Load | 16.0 min | 13.5 min | 18.0 min | 14.0 min | 16.0 min | 10.0 min |
| Environmental | | | | | | |
| Operating Temperature, °F (°C) | 32° to 104° (0° to 40°) | | | | | |
| Storage Temperature °F (°C) | 5° to 120° (-15° to 50°) | | | | | |
| Relative Humidity | 20% – 90%, non-condensing | | | | | |
| Operating Altitude | 0 to 9,942 (0 to 3,000) without derating. Operating temperature reduced 9 °F (5 °C) for each additional 1,640ft (500m) of altitude. | | | | | |
| Audible Noise | < 45 dB | < 45 dB | < 45 dB@line mode < 55 dB@battery mode | < 45 dB@line mode < 55 dB@battery mode | < 45 dB@line mode < 55 dB@battery mode | < 45 dB@line mode < 55 dB@battery mode |
| Agency | | | | | | |
| Safety | UL 1778, c-UL-us Listed | | | | | |
| Emissions | FCC Part 15, Class B | | | | | |
| Network Surge | UL 497 B | | | | | |
| Transportation | ISTA Procedure 1A Certification | | | | | |

* PSI5 2U Rack/Tower UPS + IS-UNITY-SNMP card bundles available - Add an "N" to the end of the model number. Available through select distributors.

Specifications for 1U Rack Mount & Mini Tower Models



| Standard Models | PSI5-1000RM1201U | PSI5-1500RM1201U | PSI5-750MT120 | PSI5-1100MT120 | PSI5-1500MT120 |
|---|---|--|--|--|--|
| Power Rating, VA/W | 1000VA, 900W | 1440VA, 1350W | 750 VA, 675W | 1100 VA, 990W | 1440 VA, 1350W |
| Dimensions, W X D X H, IN (MM) | | | | | |
| Unit | 17.2 x 20.1 x 1.7 (438 x 511 x 44) | 17.2 x 24.8 x 1.7 (438 x 631 x 44) | 5.7 x 14.8 x 8.7 (145 x 376 x 220) | 5.7 x 14.8 x 8.7 (145 x 376 x 220) | 5.7 x 19.1 x 8.7 (145 x 484 x 220) |
| Shipping | 22.1 x 23.4 x 5.5 (560 x 595 x 140) | 23.4 x 27.8 x 5.5 (595 x 710 x 140) | 9.1 x 17.7 x 12.8 (230 x 450 x 325) | 9.1 x 17.7 x 12.8 (230 x 450 x 325) | 9.1 x 22.4 x 12.8 (230 x 570 x 325) |
| Weight, LB (KG) | | | | | |
| Unit | 36.4 (16.5) | 45.6 (20.7) | 24.7 (11.2) | 26.0 (11.8) | 40.1 (18.2) |
| Shipping | 40.8 (18.5) | 51.1 (23.2) | 27.8 (12.6) | 29.1 (13.2) | 44.1 (20.0) |
| Nominal Voltage Setting | 100 / 110 / 115 / 120 / 125 VAC | | | | |
| Input/Output AC Parameters | | | | | |
| Voltage Input Range (with battery operation) | 0-150VAC | | | | |
| Voltage Input Range (without battery operation) | 75-146VAC | | | | |
| Input Voltage Measurement Tolerance | 3% | | | | |
| High Line Buck to Battery | 117 / 129/ 135 / 140 / 146 VAC | | | | |
| Standard Models | | | | | |
| Power Rating, VA/W | 1000VA, 900W | 1440VA, 1350W | 750 VA, 675W | 1100 VA, 990W | 1440 VA, 1350W |
| Frequency Input Range | 55-65 Hz (57-63 Hz Battery to Normal comeback) | | | | |
| Internal Rear-panel Input Breaker Rating | 13A | 16A | 10A | 13A | 16A |
| Input Surge Protection | ANSI C62.41, Category A, Level 3 1372 J | | | | |
| Input Power Cord | NEMA 5-15P, offset 90-degree type (3 m attached) | | | | |
| Output Voltages (on battery) | 100 / 110 / 115 / 120 / 125 VAC(±1.5 on battery before alarm) user selectable (120 VAC is factory default) | | | | |
| Output Frequency (on battery) | 60 Hz ±1% | | | | |
| Output Receptacles - not controllable | (3) NEMA 5-15R | | | | |
| Output Receptacles - controllable | (2) NEMA 5-15R | | | (3) NEMA 5-15R | |
| Transfer Time | Adjustable with User Setting 09 ST1: 4-6ms typical, 10ms max (default) ST2: 4-6ms Typical, 11ms max ST3: 8-10ms typical, 13ms max | | | | |
| Battery Waveform | Pure Sinewave | | | | |
| Output Overload Operation | 100%- alarm warning 110% - alarm warning and shutdown after 10 seconds 120%- alarm warning and immediate shutdown | | | | |
| Protection | Electronic (over current, short circuit w/ latching shutdown) | | | | |
| AC-mode Efficiency | 98% | | | 96% | |
| Buck- and Boost-mode Efficiency | 93% | | | | |
| Type | Valve-regulated lead-acid (VRLA) in compliance with UL 1989 | | | | |
| Recharge Time | 6 hours to recover 90% | | | 6-8 hours to recover 90% | |
| Quantity x Voltage x Ah | 4 x 6V x 9Ah | 6 x 6V x 9Ah | 2 x 12V x 9Ah | 2 x 12V x 10Ah | 2 x 12V x 9Ah |
| Environmental | | | | | |
| Operating Temperature, ° F (° C) | 32-104 (0-40) | | | | |
| Storage Temperature ° F (° C) | -5- 122 (-15- 50) | | | | |
| Relative Humidity | 20% to 90% non-condensing | | | | |
| Operating Altitude | 0 - 9,942 (0 -3,000) without derating Operating temperature reduced 9° F (5° C) for each additional 1,640 ft (500 m) of altitude. | | | | |
| Audible Noise | < 45dB | | | < 45dB@line mode<55dB@ battery mode | |
| Agency | | | | | |
| Safety | UL 1778, c-UL-us Listed | | | | |
| Emissions | FCC Part 15, Class B | | | | |
| Network Surge | UL 497 B | | | | |
| Transportation | ISTA Procedure 1A Certification | | | | |

Accessories and Options

Replacement Internal Battery Kits

| Part Number | Applicable To | Shipping Weight lbs. |
|-----------------|----------------|----------------------|
| PSI5-800BATKIT | PSI5-800RT120 | 13.6 |
| PSI5-1100BATKIT | PSI5-1100RT120 | 14.1 |
| PSI5-1500BATKIT | PSI5-1500RT120 | 25.5 |
| PSI5-2200BATKIT | PSI5-2200RT120 | 37.8 |
| PSI5-3000BATKIT | PSI5-3000RT120 | 38.8 |
| PSI5-5000BATKIT | PSI5-5000RT208 | 41 |

External Battery Cabinets

| Part Number | Applicable To | Shipping Weight lbs. |
|--------------|-------------------------------|----------------------|
| PSI5-24VBATT | PSI5-800RT120, PSI5-1100RT120 | 51.8 |
| PSI5-48VBATT | PSI5-1500RT120 | 70.3 |
| | PSI5-2200RT120 | |
| PSI5-72VBATT | PSI5-3000RT120 | 96.1 |
| | PSI5-5000RT208 | |

Note: Runtimes with EBC are shown on page 11

Extended Battery Cabinet Interconnect Cable

| Part Number | Applicable To | Shipping Weight lbs. |
|--------------|---------------|----------------------|
| PSI5-24VCBL1 | PSI5-24VCBL1 | 1.56 |
| PSI5-24CBL6 | PSI5-24VCBL6 | 2.8 |
| PSI5-48VCBL1 | PSI5-48VCBL1 | 1.56 |
| PSI5-48VCBL6 | PSI5-48VCBL6 | 2.8 |
| PSI5-72VCBL1 | PSI5-72VCBL1 | 1.56 |
| PSI5-72VCBL6 | PSI5-72VCBL6 | 2.8 |

Mounting Kit Options

These mounting kits are only applicable to 2U Rack/Tower Products

| Application | Model Supported | Style | Part Number | Description |
|---------------------|-------------------------------|---------|-------------|--|
| 2 Post-Telecom rack | PSI5 2U UPS family up to 5kVA | Bracket | 2POSTRMKIT | Flexible installation capability on typical 2 post network equipment racks. Securely mount the UPS into a typical 3-6" rail width solution |
| | | Shelf | RS500 | Flush-mount shelf for 19" rack wide |
| | | Shelf | RS600 | Center-mount shelf for 19" rack wide |
| | | Shelf | RS700 | Flush-mount shelf for 23" rack wide |
| | | Shelf | RS800 | Center-mount shelf for 23" rack wide |

Note: RS600 and RS800 kits include adapter brackets for installation of up to (2) Liebert PSI5 2U model

Step Down Transformer Options (Only for use with PSI5-5000RT208)

| Part Number | Description |
|----------------|---|
| TDU-6000RTL630 | 6000VA, 208/120VAC Step-down transformer with L6-30P Input with 8 x NEMA 5-15/20 and 2 x L5-30R |
| TDU-4000RTL630 | 4000VA, 208/120VAC Step-down transformer with L6-30P Input with 8 x NEMA 5-15/20 and 2 x L5-20R |

Network Communication Cards and environmental sensors

Optional Intellislot cards are compatible with all Liebert PSI5 UPS systems

| | | |
|---------------------------|--|---|
| Network Communications | IS-UNITY-SNMP | 10/100 Mbit Ethernet SNMP, Device Web Page, with MIB and configuration cable |
| | IS-UNITY-DP | Same as IS-UNITY-SNMP plus SN series environmental sensor support |
| | IS-RELAY | Intellislot Interface Kit for Relay Contacts |
| Environmental Sensors | SN-Z01 | Integrated cable with single temperature sensor |
| | SN-Z02 | Integrated cable with three temperature sensors |
| | SN-Z03 | Integrated cable with three temperature and one humidity sensors |
| | SN-T | Modular with single temperature sensor |
| | SN-TH | Modular with single temperature and single humidity sensor |
| | SN-2D | Modular with two door contact inputs |
| | SN-3C | Modular with three dry contact inputs |
| | SN-L20 | Modular leak zone sensor with 20 foot cable (Liebert RDU-S only) |
| UPS manageability options | Trellis™ Power Insight Software Management | Trellis™ Power Insight is a complimentary web-based software designed to monitor up to 100 Vertiv™ UPSs and rPDUs |

Liebert® PSI5 UPS - Power Assurance Services

Power Assurance Package

| Bundled Start-up Service AND 5-Year On-site Emergency Response | Standard | With LIFE Services | With Removal | With LIFE and Removal |
|--|-------------|--------------------|----------------|-----------------------|
| Equipment Model / Type | Part Number | Part Number | Part Number | Part Number |
| Liebert PSI5 UP TO 3KVA | PAPPSI-1K3K | PAPPSI-1K3KLF | PAPPSI-1K3KRMV | PAPPSI-1K3KRLF |
| PSI5 5KVA | PAPPSI-5K | PAPPSI-5KLF | PAPPSI-5KRMV | PAPPSI-5KRLF |
| Liebert PSI5 EXTERNAL BATTERY CABINETS | PAPPSI-BATT | ----- | PAPPSI-BATTRMV | |

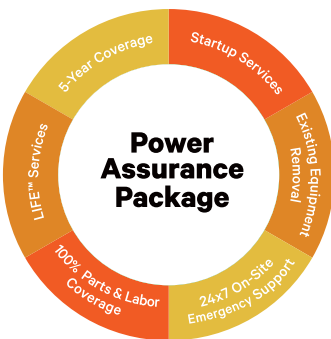
Power Start-up Services

| Startup service Only | Standard | With Removal |
|--|---------------|-----------------|
| Equipment Model / Type | Part Number | Part Number |
| Liebert PSI5 UP TO 3KVA | SUPSI-1K3K | SUPSI-1K3KRMV |
| PSI5 5KVA | SUPSI-5K | SUPSI-5KRMV |
| Liebert PSI5 EXTERNAL BATTERY CABINETS | SUPSI-EXTBTCB | SUPSIEXTBTCBRMV |

Power Emergency Services

| 5-Year On-site Emergency Coverage - Only | Standard | With LIFE Services |
|--|----------------|--------------------|
| Equipment Model / Type | Part Number | Part Number |
| Liebert PSI5 750 and 800VA | PEPPSI-8005Y | PEPPSI-8005Y |
| Liebert PSI5 1000 and 1100VA | PEPPSI-11005Y | PEPPSI-11005Y |
| Liebert PSI5 1500VA | PEPPSI-15005Y | PEPPSI-15005Y |
| Liebert PSI5 2200VA | PEPPSI-22005Y | PEPPSI-22005Y |
| Liebert PSI5 3000VA | PEPPSI-30005Y | PEPPSI-30005Y |
| Liebert PSI5 5000VA | PEPPSI-5K5Y | PEPPSI-5K5Y |
| Liebert PSI5 24VBATT EXT BATT CABINET | PEPPSI-24VBATT | PEPPSI-24VBATT |
| Liebert PSI5 48VBATT EXT BATT CABINET | PEPPSI-48VBATT | PEPPSI-48VBATT |
| Liebert PSI5 72VBATT EXT BATT CABINET | PEPPSI-72VBATT | PEPPSI-72VBATT |

Power Assurance Package - Summary



- Includes all below "Power Start-up Services" and "Power Emergency Services" support
- One Preventative Maintenance visit after 3rd year (5kVA UPS only)

Power Emergency Services - Summary

- On Site Service Support
- Full-service five (5) year contract term commencing upon the start-up date
- 100% parts coverage, including internal batteries, POD and web card
- 100% labor and travel coverage 7 days/week, 24 hours/day
- 24-Hour Customer Resolution Center via 1-800-LIEBERT
- Access to Customer Services Network portal

Power Startup Services - Summary

- Installation includes mounting and start-up of new UPS or EBC (excludes hard-wired applications)
- Services performed by Vertiv factory trained technician
- Services performed 7 X 24, excluding national holidays within the 48 contiguous states and Hawaii
- Removal and disposal of existing UPS or EBC equipment, if selected

LIFE™ Services includes above plus:

- Continuous Monitoring, Expert Analysis, and Proactive Response

Note: LIFE Services requires an UNITY card.

Please refer to the Scopes of Work for full and additional details.

PSI5 Extended Warranty (800-5000 Va; 120 Vac & 208 Vac)

| | Warranty Extension List Price | |
|----------------------------------|-------------------------------|----------------------|
| | Additional 1 Year | Additional 3 Years |
| UPS Model Number | Warranty Part Number | Warranty Part Number |
| 2U Rack/Tower UPS Models | | |
| PSI5-800RT120 | 1WEPSI5-800 | 3WEPSI5-800 |
| PSI5-1100RT120 | 1WEPSI5-1100 | 3WEPSI5-1100 |
| PSI5-1500RT120 | 1WEPSI5-1500 | 3WEPSI5-1500 |
| PSI5-2200RT120 | 1WEPSI5-2200 | 3WEPSI5-2200 |
| PSI5-3000RT120 | 1WEPSI5-3000 | 3WEPSI5-3000 |
| PSI5-5000RT208 | 1WEPSI5-5000 | 3WEPSI5-5000 |
| Mini Tower UPS Models | | |
| PSI5-750MT120 | 1WEPSI5-750 | 3WEPSI5-750 |
| PSI5-1100MT120 | 1WEPSI5-1100 | 3WEPSI5-1100 |
| PSI5-1500MT120 | 1WEPSI5-1500 | 3WEPSI5-1500 |
| 1U Rack Mount UPS Models | | |
| PSI5-1000RM1201U | 1WEPSI5-1000 | 3WEPSI5-1000 |
| PSI5-1500RM1201U | 1WEPSI5-1500 | 3WEPSI5-1500 |
| External Battery Cabinets | | |
| PSI5-24VBATT | 1WEPSI5-24VBATT | 3WEPSI5-24VBATT |
| PSI5-48VBATT | 1WEPSI5-48VBATT | 3WEPSI5-48VBATT |
| PSI5-72VBATT | 1WEPSI5-72VBATT | 3WEPSI5-72VBATT |

Note: Extended warranties can only be ordered when ordering the UPS and prior to shipment.

2U Rack/Tower UPS Runtime Tables

| PSI5-800RT120 | | | | | | | | | |
|----------------------|-----|-----|--|-----|-----|-----|------|------|------|
| Load | | | Number Of External Battery Cabinets (EBCs) | | | | | | |
| | | | Internal Battery Only | 1 | 2 | 3 | 4 | 5 | 6 |
| % | VA | W | Minutes | | | | | | |
| 100 | 800 | 720 | 5.5 | 22 | 45 | 70 | 97 | 125 | 154 |
| 75 | 600 | 540 | 8.5 | 30 | 60 | 93 | 129 | 165 | 202 |
| 50 | 400 | 360 | 16.0 | 53 | 107 | 166 | 226 | 287 | 350 |
| 25 | 200 | 180 | 33.0 | 109 | 215 | 326 | 438 | 551 | 665 |
| 10 | 80 | 72 | 85.5 | 285 | 539 | 796 | 1053 | 1311 | 1569 |

| PSI5-1100RT120 | | | | |
|-----------------------|------|-----|-----------------------|-----|
| Load | | | Number of EBCs | |
| | | | Internal Battery Only | 1 |
| % | VA | W | Minutes | |
| 100 | 1100 | 990 | 4.5 | 17 |
| 75 | 825 | 743 | 8.0 | 24 |
| 50 | 550 | 495 | 13.5 | 44 |
| 25 | 275 | 248 | 30.0 | 91 |
| 10 | 110 | 99 | 87.0 | 244 |

| PSI5-1500RT120 | | | | | | | | |
|-----------------------|-----|-----|----------------|-----|------|------|------|--|
| Load | | | Number of EBCs | | | | | |
| | | | 2 | 3 | 4 | 5 | 6 | |
| % | VA | W | | | | | | |
| 100 | 880 | 792 | 45 | 68 | 92 | 118 | 144 | |
| 75 | 660 | 594 | 65 | 98 | 133 | 168 | 205 | |
| 50 | 440 | 396 | 107 | 160 | 215 | 272 | 328 | |
| 25 | 220 | 198 | 219 | 321 | 426 | 531 | 636 | |
| 10 | 88 | 79 | 534 | 768 | 1003 | 1238 | 1473 | |

PSI5-1500RT120

| Load | | | Number Of External Battery Cabinets (EBCs) | | | | | | |
|------|------|-------|--|-----|-----|-----|------|------|------|
| | | | Internal Battery Only | 1 | 2 | 3 | 4 | 5 | 6 |
| % | VA | W | Minutes | | | | | | |
| 100 | 1500 | 1350 | 6.0 | 24 | 50 | 78 | 107 | 138 | 169 |
| 75 | 1125 | 1013 | 9.5 | 33 | 66 | 102 | 141 | 181 | 222 |
| 50 | 750 | 675 | 18.0 | 59 | 119 | 183 | 249 | 316 | 383 |
| 25 | 375 | 337.5 | 37.0 | 122 | 240 | 363 | 486 | 611 | 736 |
| 10 | 150 | 135 | 110.5 | 330 | 619 | 911 | 1203 | 1496 | 1790 |

PSI5-2200RT120

| Load | | | Number of EBCs | |
|------|------|------|-----------------------|-----|
| | | | Internal Battery Only | 1 |
| % | VA | W | Minutes | |
| 100 | 1920 | 1920 | 5.0 | 27 |
| 75 | 1440 | 1440 | 7.5 | 40 |
| 50 | 960 | 960 | 14.0 | 66 |
| 25 | 480 | 480 | 31.5 | 137 |
| 10 | 192 | 192 | 88.0 | 358 |

| Load | | | Number of EBCs | | | | |
|------|-------|------|----------------|------|------|------|------|
| | | | 2 | 3 | 4 | 5 | 6 |
| % | VA | W | | | | | |
| 100 | 1536 | 1536 | 72 | 111 | 152 | 194 | 237 |
| 75 | 1152 | 1152 | 104 | 159 | 216 | 274 | 333 |
| 50 | 768 | 768 | 170 | 257 | 346 | 435 | 525 |
| 25 | 384 | 384 | 336 | 497 | 661 | 824 | 989 |
| 10 | 153.6 | 154 | 835 | 1213 | 1592 | 1971 | 2350 |

PSI5-3000RT120

| Load | | | Number of EBCs | |
|------|------|------|-----------------------|-----|
| | | | Internal Battery Only | 1 |
| % | VA | W | Minutes | |
| 100 | 3000 | 2700 | 5.5 | 20 |
| 75 | 2250 | 2025 | 8.5 | 27 |
| 50 | 1500 | 1350 | 16.0 | 50 |
| 25 | 750 | 675 | 34.0 | 102 |
| 10 | 300 | 270 | 103.0 | 282 |

| Load | | | Number of EBCs | | | | |
|------|------|------|----------------|-----|------|------|------|
| | | | 2 | 3 | 4 | 5 | 6 |
| % | VA | W | | | | | |
| 100 | 2400 | 2160 | 52 | 78 | 106 | 134 | 164 |
| 75 | 1800 | 1620 | 74 | 112 | 151 | 191 | 232 |
| 50 | 1200 | 1080 | 122 | 182 | 244 | 306 | 370 |
| 25 | 600 | 540 | 244 | 358 | 473 | 589 | 705 |
| 10 | 240 | 216 | 619 | 887 | 1156 | 1425 | 1695 |

PSI5-5000RT208 @ 208V NOMINAL

| Load | | | Number of EBCs | |
|------|------|------|-----------------------|-----|
| | | | Internal Battery Only | 1 |
| % | VA | W | Minutes | |
| 100 | 4250 | 3825 | 3 | 15 |
| 75 | 3188 | 2869 | 4 | 20 |
| 50 | 2125 | 1913 | 10 | 36 |
| 25 | 1063 | 956 | 26 | 82 |
| 10 | 425 | 383 | 69 | 215 |

| Load | | | Number of EBCs | | | | |
|------|------|------|----------------|-----|-----|-----|-----|
| | | | 2 | 3 | 4 | 5 | 6 |
| % | VA | W | | | | | |
| 100 | 4000 | 3600 | 30 | 44 | 60 | 76 | 92 |
| 75 | 3000 | 2700 | 43 | 63 | 85 | 108 | 131 |
| 50 | 2000 | 1800 | 70 | 104 | 139 | 175 | 212 |
| 25 | 1000 | 900 | 156 | 228 | 301 | 375 | 449 |
| 10 | 400 | 360 | 358 | 511 | 665 | 819 | 974 |

| PSI5-5000RT208 | | | | |
|----------------|------|------|-----------------------|-----|
| Load | | | Number of EBCs | |
| | | | Internal Battery Only | 1 |
| % | VA | W | Minutes | |
| 100 | 5000 | 4500 | 3 | 15 |
| 75 | 3750 | 3375 | 4 | 20 |
| 50 | 2500 | 2250 | 10 | 36 |
| 25 | 1250 | 1125 | 26 | 82 |
| 10 | 500 | 450 | 69 | 215 |

| PSI5-5000RT208 | | | | | | | |
|----------------|------|------|----------------|-----|-----|-----|-----|
| Load | | | Number of EBCs | | | | |
| | | | 2 | 3 | 4 | 5 | 6 |
| % | VA | W | | | | | |
| 100 | 4000 | 3600 | 30 | 44 | 60 | 76 | 92 |
| 75 | 3000 | 2700 | 43 | 63 | 85 | 108 | 131 |
| 50 | 2000 | 1800 | 70 | 104 | 139 | 175 | 212 |
| 25 | 1000 | 900 | 156 | 228 | 301 | 375 | 449 |
| 10 | 400 | 360 | 358 | 511 | 665 | 819 | 974 |

1U Rack Mount UPS Runtime Tables

| PSI5-1000RM1201U | | | |
|------------------|------|-----|---------|
| Load | | | |
| % | VA | W | Minutes |
| 100 | 1000 | 900 | 5 |
| 75 | 750 | 675 | 8 |
| 50 | 500 | 450 | 13 |
| 25 | 250 | 225 | 34 |
| 10 | 100 | 90 | 91 |

| PSI5-1500RM1201U | | | |
|------------------|------|------|---------|
| Load | | | |
| % | VA | W | Minutes |
| 100 | 1500 | 1350 | 5 |
| 75 | 1125 | 1013 | 8 |
| 50 | 750 | 675 | 14 |
| 25 | 375 | 338 | 34 |
| 10 | 150 | 135 | 91 |

Mini Tower UPS Runtime Tables

| PSI5-1100MT120 | | | |
|----------------|------|-----|---------|
| Load | | | |
| % | VA | W | Minutes |
| 100 | 1100 | 990 | 5 |
| 75 | 825 | 743 | 8 |
| 50 | 550 | 495 | 14 |
| 25 | 275 | 248 | 37 |
| 10 | 110 | 99 | 107 |

| PSI5-1500MT120 | | | |
|----------------|------|------|---------|
| Load | | | |
| % | VA | W | Minutes |
| 100 | 1500 | 1350 | 6 |
| 75 | 1125 | 1013 | 10 |
| 50 | 750 | 675 | 18 |
| 25 | 375 | 338 | 42 |
| 10 | 150 | 135 | 111 |

| PSI5-750MT120 | | | |
|---------------|-----|-----|---------|
| Load | | | |
| % | VA | W | Minutes |
| 100 | 750 | 675 | 6 |
| 75 | 563 | 506 | 10 |
| 50 | 375 | 338 | 18 |
| 25 | 188 | 169 | 41 |
| 10 | 75 | 68 | 93 |



Vertiv.com | Vertiv Headquarters, 1050 Dearborn Drive, Columbus, OH, 43085, USA

© 2019 Vertiv Group Corp. All rights reserved. Vertiv™ and the Vertiv logo are trademarks or registered trademarks of Vertiv Group Corp. All other names and logos referred to are trade names, trademarks or registered trademarks of their respective owners. While every precaution has been taken to ensure accuracy and completeness here, Vertiv Group Corp. assumes no responsibility, and disclaims all liability, for damages resulting from use of this information or for any errors or omissions. Specifications, rebates and other promotional offers are subject to change at Vertiv's sole discretion upon notice.