

SDC EntryCheck™

# E75 Series

## Standalone Electronic Cylindrical Locksets

SDC battery powered electronic door locks and keyless entry system provide controlled access for basic and multi-level convenience requirements. Priced to compete with entry-level brands, SDC standalone locksets are loaded with features professionals expect with hardwired systems. Additionally, E70 series keypads comes standard with all of SDC's EntryCheck® features such as door sense/inhibit inputs industry professionals have become accustomed to from SDC keypads.

**E75K, E75P and E75PS models standalone locksets are keypad or PC software programmable**, and combine multiple access technology with efficient motorized locksets. An optional passage mode feature comes standard.

**E75KL and E75PL models feature a privacy function** that locks the keypad by engaging the privacy button on the inside, and the red LED on the outside flashes to indicate room occupation. Turning the inside lever upon exiting deactivates the privacy function. In case of emergency, the privacy function can be overridden via key or master code. **E75KL and E75PL modes are the perfect low-cost standalone solution for new or retrofitting of service stations, convenience stores, fast food or coffee house restroom facilities.**



**E75K  
E75KL**



**E75P  
E75PL  
E75PS**



## MODELS

**E75** Standalone Cylindrical Lockset



## STANDARD FEATURES

- Keypad programmable
- 3,000 users, 32 temporary users
- 4 to 6 digit PIN codes
- 32 access groups, schedules and holidays
- 4 authority levels
- Keypad tamper lockout
- Mechanical key override
- Battery powered (4 AA)
- Blue backlit cast metal keys
- Weather & vandal resistant
- Retrofits existing lock door prep
- Motorized SDC cylindrical lockset
- Vandal resistant lever clutch mechanism
- Request-to-exit (REX)
- Door position status (DPS)
- Visual status indicators (LED)



## OPTIONAL FEATURES

- Keypad with privacy feature
- Keypad with integrated proximity reader
- Keypad with integrated proximity ready and privacy feature
- Keypad with integrated proximity reader and software



## APPLICATIONS

### PRIVACY FEATURE SIGNAGE

Generic signage is available for the front side to indicate the room is occupied when the LED is flashing and for the backside to notify the occupant to push the red button for the privacy function and to turn the handle to exit and disengage the privacy function. Custom signage is available on request for your particular application.



### PRIVACY TIME LIMIT INDICATION\*

An internal logic board includes a timer for up to 60 minutes that can be set to disengage the privacy function, making the room available for a new occupant. You can also keep the privacy function engaged, but use the auxiliary relay to send a signal to management, front desk, office or cashier, that the occupant has exceeded the time limit so someone can check in on them.



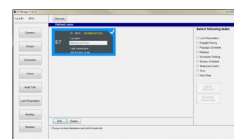
\* Implementing privacy time limit indication requires wiring during installation.

### SOFTWARE FEATURES

#### Expanded Support & Control -

Bluetooth enabled point and click microsoft PC-based software.

Manage individual door parameters, access schedules, user groups, holidays, temporary users.



**Clone Lock Settings** - lock settings and related parameters are easily cloned to other locks, permitting quick multi-lock installations

**Data Import** - all lock parameters and user data can easily be imported from existing databases, locks, or spreadsheets.

**Database Backup Utility** - password protected SQL database may be saved on any PC.

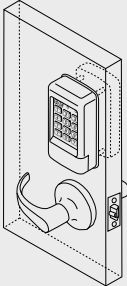
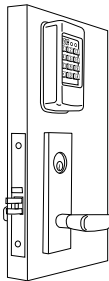
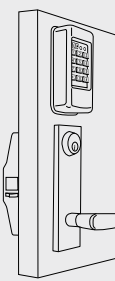
**Wireless Information Transfer** - lock programming and audit trail may be uploaded or downloaded using a Bluetooth enabled PC or laptop.

**User Reports** - users may be exported to Excel spreadsheets where information is easily sorted or printed.

**Audit Trail Information** - locks will maintain a record of the last 10,000 events to provide increased accountability. Audits may be downloaded to Excel spreadsheets where information is easily analyzed, sorted or printed.

- User entries logged with time and date
- Remote input activation is logged
- Door forced/door ajar/duress alarms are logged

## CROSS REFERENCE

Series	E75	E76	E77
			
<b>Lockset</b>	Cylindrical	Mortise	Exit Device
<b>Keypad Only</b>	E75K	E76K, E76+K	E77K
<b>Integrated Prox</b>	E75P	E76P, E76+P	E77P
<b>Integrated Prox &amp; Software</b>	E75PS	E76PS, E76+PS	E77PS
<b>Privacy Feature</b>	E75KL, E75PL	----	----
	<a href="#">CLICK TO VIEW</a>	<a href="#">CLICK TO VIEW</a>	<a href="#">CLICK TO VIEW</a>

## SPECIFICATIONS

	<b>E75K E75KL</b>	<b>E75P E75PL</b>	<b>E75PS</b>
<b>Function</b>	Keypad Only	Keypad w/ Prox Reader	Keypad w/ Prox Reader & Software
<b>Power</b>	AA Alkaline Batteries (4) or 30mA @ 12 VDC	AA Alkaline Batteries (4) or 30mA @ 12 VDC	AA Alkaline Batteries (4) or 30mA @ 12 VDC
<b>Battery Lifespan</b>	100,000 cycles	100,000 cycles	100,000 cycles
<b>Inputs</b>	Request-to-Exit (1) Door Position Status (1)	Request-to-Exit (1) Door Position Status (1)	Request-to-Exit (1) Door Position Status (1)
<b>Output</b>	Auxiliary Relay (1)	Auxiliary Relay (1)	Auxiliary Relay (1)
<b>Contact</b>	SPDT 1 Amp @ 30 VDC Resistive	SPDT 1 Amp @ 30 VDC Resistive	SPDT 1 Amp @ 30 VDC Resistive
<b>Operating Temperature</b>	-4°F to +140°F (-20°C to +60°C)	-4°F to +140°F (-20°C to +60°C)	-4°F to +140°F (-20°C to +60°C)
<b>Operating Humidity</b>	5% to 95% non-condensing	5% to 95% non-condensing	5% to 95% non-condensing
<b>Latchbolt</b>	5/16" Throw	5/16" Throw	5/16" Throw
<b>Keyway Format</b>	G1/E1 (Schlage "C" Keyway) G5/E5 (Best Small Format Prep)	G1/E1 (Schlage "C" Keyway) G5/E5 (Best Small Format Prep)	G1/E1 (Schlage "C" Keyway) G5/E5 (Best Small Format Prep)
<b>Backset</b>	2¾" Standard 2¾" Optional*	2¾" Standard 2¾" Optional*	2¾" Standard 2¾" Optional*
<b>Strike</b>	4⅞" ANSI A115.2	4⅞" ANSI A115.2	4⅞" ANSI A115.2
<b>Door Thickness</b>	1¾" - 2⅞"	1¾" - 2⅞"	1¾" - 2⅞"
<b>Supported Operating Systems</b>	-----	-----	Windows 7, 10 (32-Bit and 64-Bit Systems)
<b>Processor</b>	-----	-----	2GHz or Faster Recommended
<b>RAM</b>	-----	-----	2GB or More Recommended
<b>Hard Disk Space</b>	-----	-----	1GB or More Recommended
<b>PC User Requirements</b>	-----	-----	Windows Administrative Rights

\* 2¾" backset ordered separately, specify "B2".



### 1| SPECIFY MODEL

**E75** Standalone Cylindrical Lockset

### 2| SPECIFY FUNCTION

**K** Keypad Only

**KL** Keypad w/ Privacy

**P** Keypad w/ Prox Reader

**PL** Keypad, Prox Reader & Privacy

**PS** Keypad w/ Prox Reader & Software

### 3| SPECIFY KEYPAD FINISH

**Q** 626 Dull Chrome 

**B** Matte Black

### 4| SPECIFY TRIM

**G1** Galaxy Rose

**E1** Eclipse Rose

**G5\*** Galaxy Rose, I-Core Prep

**E5\*** Eclipse Rose, I-Core Prep

\* Key cylinder not included, order separately.



### 5| SPECIFY TRIM FINISH

**Q** 626 Dull Chrome 

**P** 625 Bright Chrome

**C** 605 Bright Brass

STEP NUMBER:	1	2	3	4	5
ORDERING EXAMPLE:	<b>E75</b>	<b>P</b>	<b>Q</b>	<b>G1</b>	<b>Q</b>

## RELATED PRODUCTS

### DOOR POSITION STATUS (DPS)

Magnetic door contacts and electromechanical ball switch assemblies provide a means of monitoring door status.

[CLICK TO VIEW](#)



### PROX CARDS, FOBS & TAGS

**HID1326-10** Proximity Card Pack, HID Compatible, Quantity 10

**HID1326-25** Proximity Card Pack, HID Compatible, Quantity 25

**HID1326-100** Proximity Card Pack, HID Compatible, Quantity 100

**HID1346-10** Proximity Key Fob Pack, HID Compatible, Quantity 10

**HID1346-100** Proximity Key Fob Pack, HID Compatible, Quantity 100

**PTAG-10** Proximity Disc Tag Pack, HID Compatible, Quantity 10

**PTAG-25** Proximity Disc Tag Pack, HID Compatible, Quantity 25

