



[www.rayteccctv.com](http://www.rayteccctv.com)

Global HQ

T: +44 (0) 1670 520055  
F: +44 (0) 1670 819760  
[sales@rayteccctv.com](mailto:sales@rayteccctv.com)

Americas

T: +1 613 270 9990  
T: +1 888 505 8335 (Toll Free)  
[ussales@rayteccctv.com](mailto:ussales@rayteccctv.com)

# Daytime Set-up Tool



## The “How To” Guide

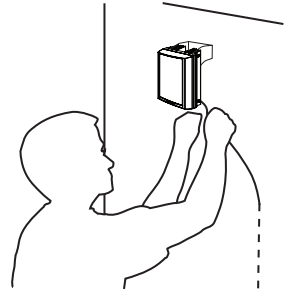
Basic steps for using the Raytec Daytime Set-up Tool (DST)

**All Raytec DST's are provided with two allen/hex keys for bracket (4mm) and base plate (2.5mm) adjustment of your VARIO illuminators.**



## Step 1.

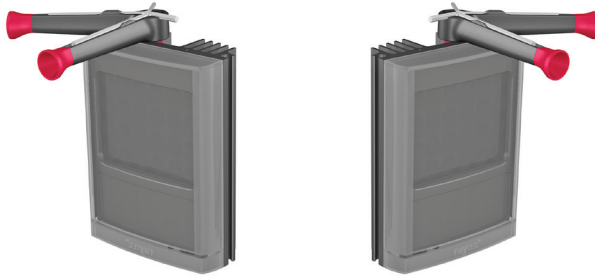
Mount Raytec illuminator to specified location using Raytec bracketry



## Step 2.

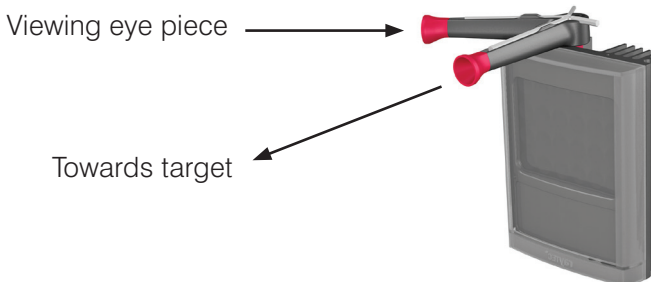
**The DST swivels around the central point to allow viewing from either left or right**

Connect Raytec DST to top of illuminator by clipping onto extrusion at top of unit as shown below. **Please note: For best results, clip DST on extrusion at centre of unit.**



## Step 3.

Align your illuminator correctly, look down the eye piece (see below) to see where the unit is targeted. Adjust the unit using the selected bracketry and the provided allen/hex keys, or if using a Raytec bracket with Adaptive Illumination™, adjust the panels using the central spine bracket.



## Step 4.

Once aligned correctly, secure all fittings on the bracket using the allen/hex keys provide and finally check with DST before removing.

## Viewing guidelines

The images below indicate how targets will appear at specified distances using the Raytec DST. All Raytec DST's provide FOV of  $\sim 2^\circ$

