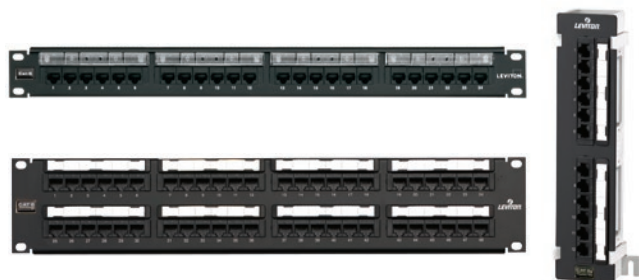


Cat 6 Flat 110-Style Patch Panels

APPLICATION

Leviton Cat 6 Flat 110-Style Patch Panels are designed for use on 19-inch standard racks and cabinets. Patch panels include patented Retention Force Technology which promotes consistent performance over the life of the system. Installer-friendly design allows for quick installation due to standard 110 terminations on the rear of the panels which follows the normal installation color sequence (blue, orange, green, brown) from left to right. The Cat 6 system is designed for use in high-megabit applications such as Gigabit Ethernet.



SPECIFICATION

Patch panels shall meet or exceed the requirements for channel- and component-level performance as described in ANSI/TIA-568.2-D Category 6 standards, as well as the Class E requirements described in ISO/IEC 11801. Panels shall feature both T568A and T568B wiring configurations, white IDC 110-punchdown modules, mounting standoffs for cable management bars, and color-coded front window labeling. Panels shall have universal T568A and T568B wiring card for terminations. Panels shall be made of 14-gauge steel, and shall have a black finish with white silk-screening. The plastic elements shall be fire retardant with a UL flammability rating of 94V-0. Panels shall be offered in 12-, 24-, 48-, and 96-port configurations as well as an 89D 12-port configuration. Patch panels shall be configured with six port modules. The 110 termination on the rear of the panels shall follow normal installation color sequence (blue, orange, green, brown) from left to right. The panels shall exceed IEEE 802.3bt standard up to 0.5 amps per conductor (100 watts) continuously.

FEATURES

- Patented Retention Force Technology protects tines from damage and increases system longevity
- Craft-friendly installation
- Universal T568A and T568B wiring cards for 110-style IDC terminations
- Color-coded front labeling for easy port identification (ANSI/TIA-606-C compliant)
- Terminates 26-22 gauge solid conductors
- Centralized labeling (available on 48-Port) promotes greater visibility of labels when patch cords are routed into horizontal cable management above and below the patch panel
- Capable of multiple re-terminations
- Panel available with patented magnifying lens label holder for easy reading
- Will exceed IEEE 802.3bt standard up to 0.5 amps per conductor (100 watts) continuously
- ETL verified to meet the IEC 60512-99-002 standard for support of IEEE 802.3bt Type 4 PoE (90-watt) applications

DESIGN CONSIDERATIONS

- Mounts on 19-inch equipment racks
- Panel offered in 12-, 24-, 48-, 96-port configurations and 12-port U89 Block for wall-mount applications
- Connector modules are in groups of six
- Includes rear cable management bars
- Use star washers for grounding in rack-mount installations

STANDARDS & REGULATIONS

- ANSI/TIA-568.2-D (Cat 6)
- ISO/IEC 11801-1 (Class E)
- ANSI/TIA-1096-A (formerly FCC Part 68)
- IEC 60512-99-002
- cULus Listed
- IEEE 802.3bt PoE Type 1 (15.4 Watts) formerly 802.3af, Type 2 (30 Watts) formerly 802.3at, Type 3 (60 Watts), Type 4 (90 Watts)
- Cisco UPoE (60 Watts), UPoE+ (90 Watts)
- Power over HDBaseT™ PoH (95 Watts)

COUNTRY OF ORIGIN

USA

WARRANTY INFORMATION

For Leviton product warranties, go to leviton.com/warranty

PRODUCT SPECIFICATIONS

69586-xxx

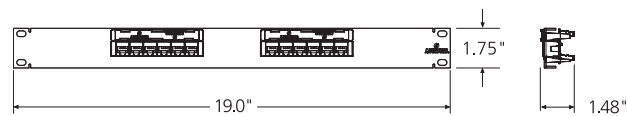


MECHANICAL SPECIFICATIONS

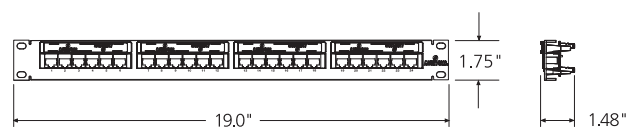
Dimensions: See below

Capacity: 12, 24, 48, 96-port,
U-89 Universal 12-port block

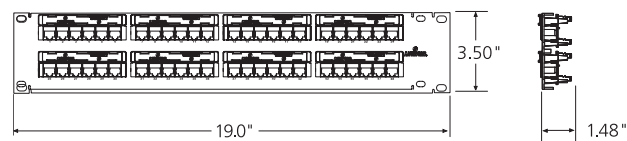
Materials: 14-gauge steel, black powder coat; PCB and plastic components are rated per UL94V-0



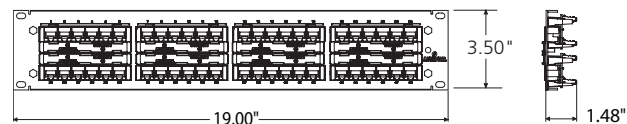
69586-U12



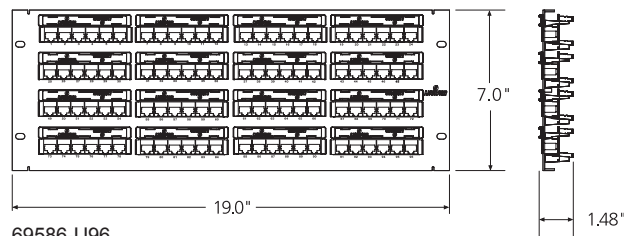
69586-U24, 69586-L24



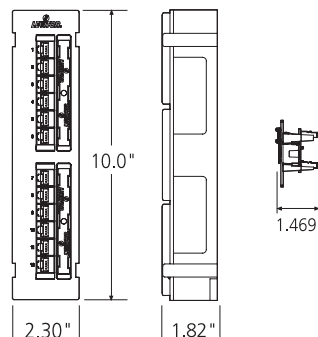
69586-U48, 69586-L48



69586-C48



69586-U96



69586-U89

69586-xxx

PART NUMBERS

Description	Part No.
Cat 6 Flat 110-Style Patch Panel, 12-Port, 1RU	69586-U12
Cat 6 Flat 110-Style Patch Panel, 24-Port, 1RU	69586-U24
Cat 6 Flat 110-Style Patch Panel with magnifying lens label holder, 24-Port, 1RU	69586-L24
Cat 6 Flat 110-Style Patch Panel, 48-Port, 2RU	69586-U48
Cat 6 Flat 110-Style Patch Panel with magnifying lens label holder, 48-Port, 2RU	69586-L48
Cat 6 Flat 110-Style Patch Panel, 48-Port, 2RU, centralized labeling	69586-C48
Cat 6 110-Style Patch Panel, 96-Port, 4RU	69586-U96
Cat 6 110-Style Patch Block, 12-Port	69586-U89

ANSI/TIA-568-C.2 CAT 6 PARAMETERS

Connecting Hardware Requirements*

	Connecting Hardware Requirements*	
	@ 100MHz	@ 250MHz
Insertion Loss (IL)	0.20	0.32
Near-end Crosstalk (NEXT)	54.0	46.0
Far-end Crosstalk (FEXT)	43.1	35.1
Return Loss (RL)	24.0	16.0
Transverse Conversion Loss (TCL)	28.0	20.0
Transverse Conversion Transfer Loss (TCTL)	28.0	20.0

*All requirements are minimum allowable except IL requirements are maximum allowable. Connecting hardware shall meet requirements of all parameters from 1-250 MHz. Values in above table are only at specific frequencies and are for references only.

For further support information, visit leviton.com/ns/support

NETWORK SOLUTIONS GLOBAL HEADQUARTERS

Bothell, WA, USA | leviton.com/ns
(800) 824 3005 / +1 (425) 486 2222 | appeng@leviton.com

NETWORK SOLUTIONS EUROPEAN HEADQUARTERS

Glenrothes, UK | leviton.com/ns/emea
+44 (0) 1592 772124 | customerserviceeu@leviton.com

Leviton is dedicated to designing, developing and manufacturing sustainable high-performance structured cabling and speciality cabling solutions. Network Solutions products are available worldwide in over 100 countries. Visit us online to learn more.

