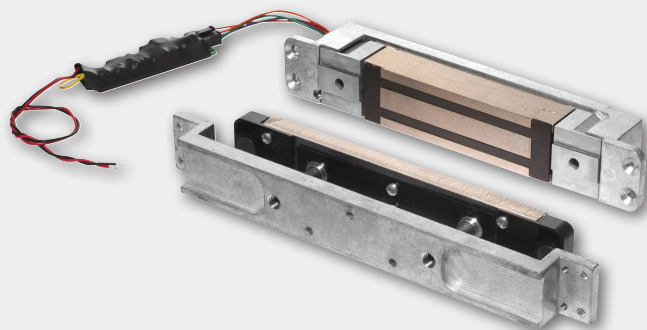




# GF3000

Mortise mounted shear lock



## Overview

GF3000 Series shear locks feature a patented design, offering advances over any shear lock in the market.

A microprocessor-based control module provides advanced electronic features. This circuitry automatically senses and adjusts input voltage, allowing for operation from 12 to 24 volt DC power sources.

These mortise shear locks offer the advantage of a totally concealed locking mechanism, providing superior security and appearance while allowing for normal door movement. The patented design incorporates locking “tabs” on the magnet assembly with mating grooves in the armature plate.

The GF3000 Series locks are ideally suited for commercial grade quality hollow metal doors and frames, and are designed to be compatible with HERCULITE® brand glass doors with top rail. Advances in design provide low operating temperatures, making these shear lock suitable for use in the growing demand for concealed locks in wood frames.

The GF3000TRD model is available when armature adjustment is required from the edge of the door due to flush ceiling conditions. The GF3000BRD model is available when no top rail mounting is available.

## Features and benefits

- 3000 lb. hold force rating
- Fully concealed shear lock mortise design
- Automatic voltage selection (AVS) 12/24 VDC (filtered)
- Built-in automatic relock switch
- Adjustable time delay on relock, 0-30 seconds
- Low temperature operation
- Microprocessor controlled
- Optional Magnetic Bond Sensor (MBS) to monitor the secure/not secure condition of the lock
- Optional Door Status Monitor (DSM) to sense the open/closed position of the door
- ANSI/BHMA 156.23, UL 10C, cUL, and CSFM certifications
- Limited lifetime warranty on magnetic coil

## Specifications

	GF3000	GF3000TRD	GF3000BRD
Holding force	3000 lbs	3000 lbs	3000 lbs
Input voltage*	12/24 VDC	12/24 VDC	12/24 VDC
Current draw	.90A @ 12VDC .45A @ 24VDC	.90A @ 12VDC .45A @ 24VDC	.90A @ 12VDC .45A @ 24VDC
Lock body Dimensions (L x H x D)	9 1/2" x 1 1/2" x 1 1/2"	9 1/2" x 1 1/2" x 1 1/2"	N/A
Lock body with mounting tabs	11 9/16" x 1 1/2" x 1 1/2"	11 9/16" x 1 1/2" x 1 1/2"	7 1/16" x 1 1/2" x 1 3/16"
Threshold box	N/A	N/A	7 1/2" x 2 1/4" x 1 3/4"
Armature	8 3/8" x 1 3/8" x 1/2"	8 3/8" x 1 3/8" x 1/2"	6 1/8" x 1 3/8" x 7/16"
Armature bracket	10 5/8" x 1 3/8" x 1"	6 1/4" x 1 3/8" x 1 1/4"	6 1/4" x 1 3/8" x 1 1/4"
Weight	7 lbs.	6 lbs.	6 lbs.
Certifications	UL 10C, cUL, CSFM, ANSI/BHMA 156.23	UL 10C, cUL, CSFM, ANSI/BHMA 156.23	UL 10C, cUL, CSFM, ANSI/BHMA 156.23

\*Requires filtered, regulated power supply.

## Ordering information

- **GF3000** (Standard Model): Fully concealed shear lock. The armature mounts into top of door or top rail and magnet mounts into header or frame. Air gap adjustment is from top edge of door.
- **GF3000TRD** (Top Rail Door): Fully concealed shear lock intended for use when top of door is not accessible for air gap adjustment after door is hung. Armature mounts into top of door or top rail and magnet mounts into header or frame. Air gap adjustment is from latch edge of door.
- **GF3000BRD** (Bottom Rail Door): Fully concealed shear lock intended for use when top of door is not accessible for air gap adjustment after door is hung. Armature mounts into bottom of door or bottom rail and magnet mounts into floor. Air gap adjustment is from edge of armature. Popular application compatible with HERCULITE® brand glass doors.

### Options

- **DSM/MBS** - Door Status Monitor/Magnetic Bond Sensor

Allegion, the Allegion logo, Schlage, and the Schlage logo are trademarks of Allegion plc, its subsidiaries and/or affiliates in the United States and other countries. Herculite® is a registered trademark of Vitro, S.A.B. de C.V., and is not affiliated with Allegion or any of its subsidiaries.

## About Allegion

Allegion (NYSE: ALLE) is a global pioneer in seamless access, with leading brands like CISA®, Interflex®, LCN®, Schlage®, SimonsVoss® and Von Duprin®. Focusing on security around the door and adjacent areas, Allegion secures people and assets with a range of solutions for homes, businesses, schools and institutions. Allegion had \$2.9 billion in revenue in 2019 and sells products in almost 130 countries. For more, visit [www.allegion.com](http://www.allegion.com)

KRYPTONITE ■ LCN ■  ■ STEELCRAFT ■ VON DUPRIN



© 2020 Allegion  
004160, Rev. 09/20  
[www.allegion.com/us](http://www.allegion.com/us)