



## Overview

MCLASS™ Unified Power Systems combine FlexPower® power modules alongside Mercury Security™ access hardware in one compact and secure UL Listed solution.

This unit is a 12V and 24V DC dual voltage access power system.

Dual C8 lock control modules provide sixteen access control inputs capable of voltage or dry contact activation, and sixteen outputs programmable for failsafe / failsecure operation at either 12 or 24 VDC and controlled by the integrated fire alarm interface circuit on the FPO. Dual D8 modules provides sixteen auxiliary class II outputs and each output is configurable for 12 or 24VDC operation.

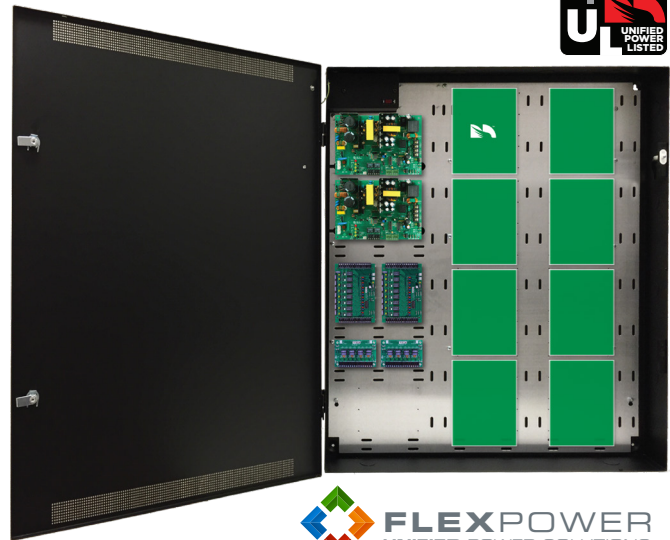
MCLASS enclosures are painted steel with removable backplate and include lock, two (2) keys and tamper switch.

## System Features

- ◆ **FPO offline power supply**
  - 120 or 230 VAC input
  - 12 and 24 VDC outputs
  - On board Fire Alarm Interface
  - Continuous and resettable DC
- ◆ **Distributed outputs**
  - 16 auxiliary, power limited at 2.5A each
  - 16 controlled, fused at 3A each
- ◆ **Expansion options**
  - Increased power, multiple voltages
  - Additional distribution outputs
  - Network monitoring and reporting
- ◆ **Lifetime Warranty**

## Enclosure Features

- ◆ **Labor saving design**
  - Pre-wired power section
  - Pre-punched knockouts
  - Removeable backplate simplifies installs
  - Pre-defined hole pattern for power section
  - Access panels mount on threaded studs - no drilling required
- ◆ **Additional benefits**
  - Wire management room
  - 4.5" enclosure depth fits battery set
  - Tamper switch, lock, dual key set standard
  - Mounting hardware for access boards included



## Ordering

Ordering	Description
FP0150/250-2C82D8PE8M2	400W (12V & 24V) 16 lock/16 aux outputs
FP0150/250-2C82D8PE8M2/E	230VIN, 400W (12V & 24V) 16 lock/16 aux



## Specifications

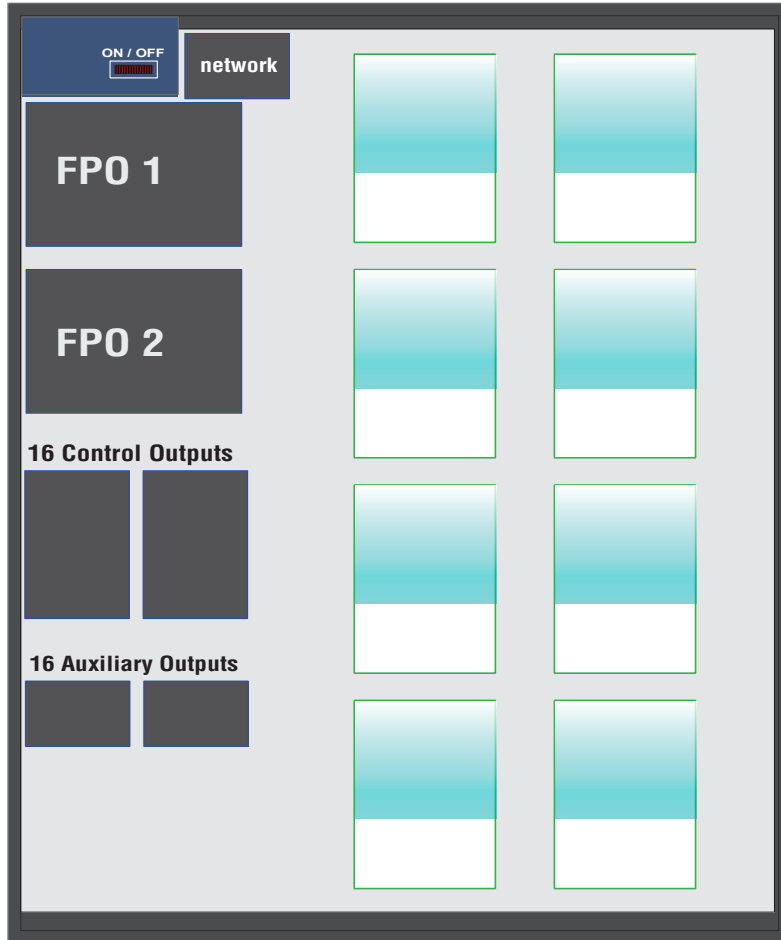
<b>Input Power</b>	Input 120/230 VAC 50/60 Hz   452 Watts Overload and short circuit protection Over temperature protection Polarized AC power supply disconnect
<b>Output Power</b>	FPO150: 12V/12A or 24V/6A   150 Watts FPO250: 12V/20A or 24V/10A   250 Watts Outputs: Continuous (DC1) Resettable (DC2) 16 control outputs, fused at 3A each 16 auxiliary outputs, class 2 power limited at 2.5A each 120 mV output voltage ripple System Efficiency: 87%   System BTU Rating: 175 BTU/Hr
<b>Battery Charging</b>	Independent built-in 2A charger for sealed lead acid or gel type batteries Microprocessor dual rate charging of 12 or 24 V battery sets Charges up to 80Ah battery sets within UL limit Automatic switchover to standby battery when AC fails Zero voltage drop when switched over to battery backup
<b>Supervision</b>	AC Fail (form "C" contacts) System Fault (form "C" contacts) may be triggered by low/no battery, short to earth ground, power supply failure or blown fuse
<b>Visual Indicators</b>	AC input, DC1 and DC2 output System fault / AC fault   Short to earth ground   Reverse battery polarity Fire Alarm Input activated C8: DC outputs and fault status D8P: DC outputs
<b>Regulatory Compliance Mercury/LSP Joint Listing</b>	UL294, UL603, UL1076, ULC S318, ULC S319 CSA C22.2 #107.1, CSA 22.2 #60950 CSFM / FCC Part 15, Subpart B CE
<b>Enclosure Dimensions</b>	Size: 36.00H x 30.00W x 4.50D in. (91.00 x 76.00 x 11.50 cm)   Weight: 80 lbs.
<b>Access Panel Mounting</b>	EP1501, EP1502, EP4502, EP2500, MR50, MR51e, MR52, MR16, LNL-500, 1100, 1200, 1300, 1320, 2000, 2210, 2220, 3300

**E8M2 Mercury Mounting Guide**

Mercury	Slots	Area
MR52 / EPxx	8	6 x 8
MR16in / MR16out	8	6 x 8
EP2500 / MUX8	8	6 x 5

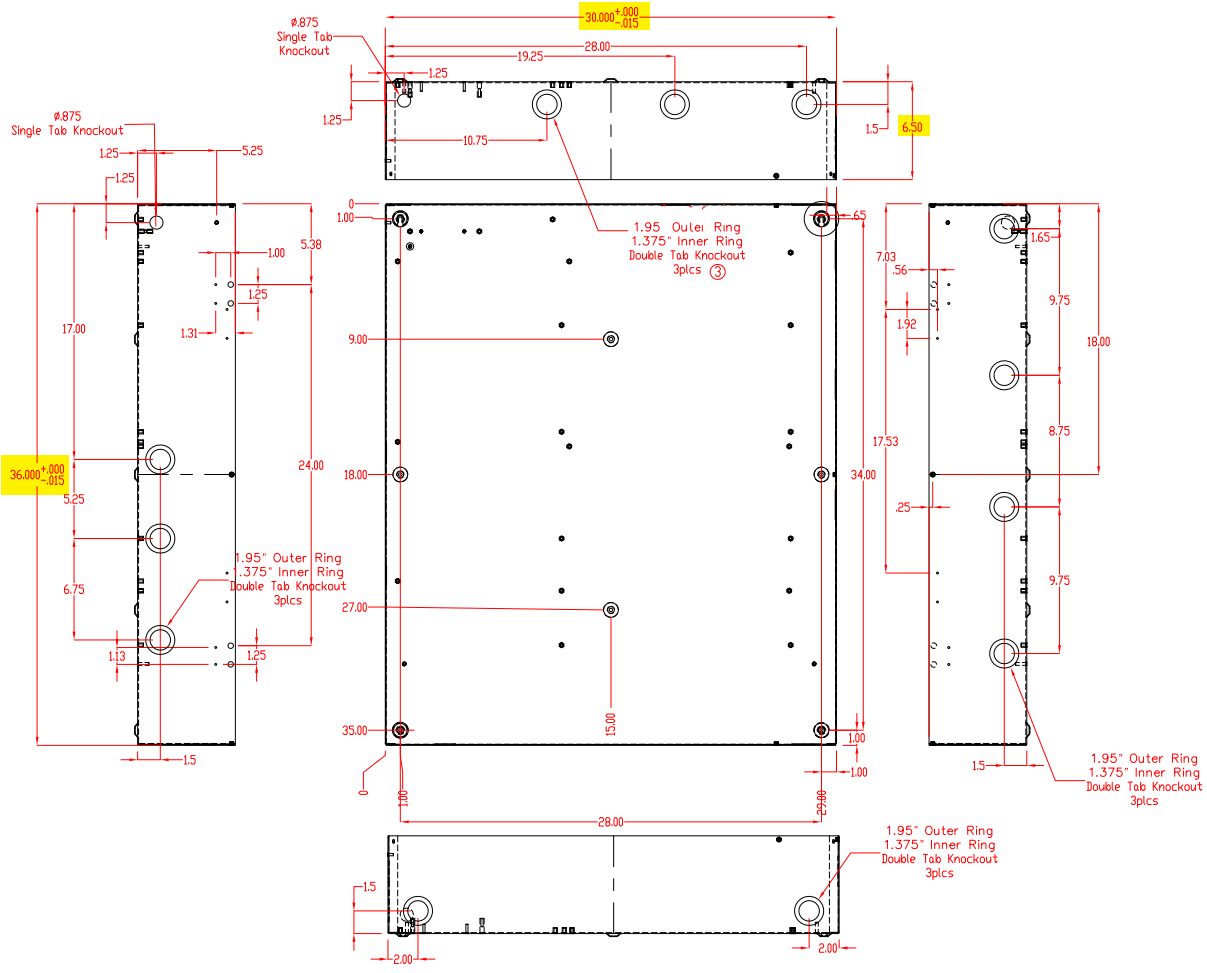
**Enclosure Features**

- ◆ **Custom Backplate**
  - Light weight aluminum with AC and battery slots to protect cables
  - LSP pre-wired power modules reduce installation time
  - Vertical Mercury pattern for maximum design flexibility
  - Wide wire management channels for panduit or tye wrap
- ◆ **E8 Enclosure**
  - Protected AC cover with on/off circuit breaker for maintenance safety
  - Pre-drilled mounting holes for field upgrades
  - 4.5" cabinet depth accommodates large battery sets
  - Removable door with "fast disconnect" ground strap
  - Multiple knockouts all four sides



# E8 Enclosure Dimensions (H x W x D)

36.00" x 30.00" x 6.50" (91 x 76 x 16.5 cm)



**LifeSafetyPower.com**

(888) 577-2898  
 info@lifesafetypower.com

Specifications subject to change without notice.

© 2020 LifeSafety Power. All rights reserved. LifeSafety Power and FlexPower are registered trademarks of LifeSafety Power. This literature is for guidance only. It does not constitute recommendations, representation, or advice, nor is it part of any contract. Our policy is one of continuous product improvement, and the right is reserved to modify the specifications contained herein without notice.

P01-872A 02/20

**LifeSafety Power**  
 899 E Park Avenue  
 Libertyville, IL 60048 USA

