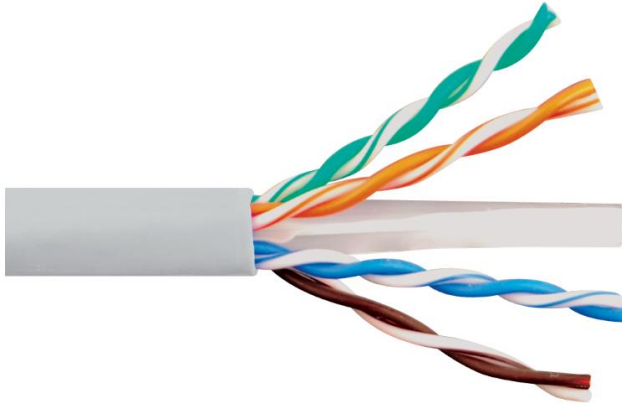


Category 6e 600MHz Riser UTP Solid Cable



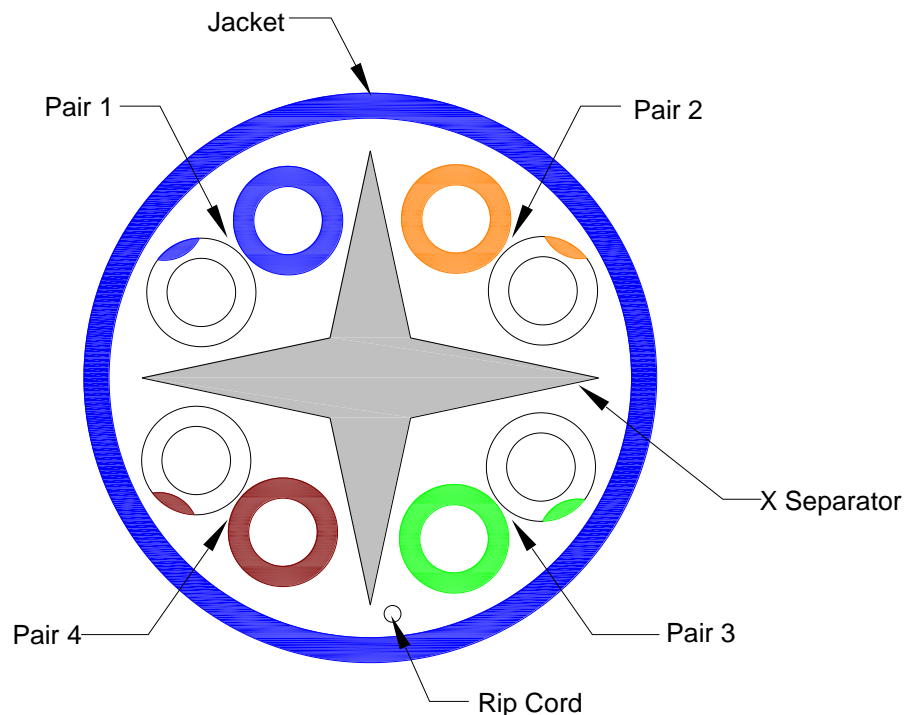
Package Include:

A. Category 6e UTP CMR Solid Cable, **1000 Feet**

Features and Benefits

- Exceeds TIA 568-C.2 Category 6 standard
- Easy to dispense 1000 feet with EZ Pull box, saving you energy and time on the job site
- Convenient sequential footage markings for usage tracking
- Riser flame retardant rated required in most commercial installations
- ETL verified TIA/EIA 568-C.2 for guaranteed performance
- UL 1863 compliant
- Available in Black, Blue, Gray, Green, White, & Yellow

Pair 1: Blue & White/Blue
 Pair 2: Orange & White/Orange
 Pair 3: Green & White/Green
 Pair 4: Brown & White/Brown



Part No: ICCABR6EXX
 Rev: I
 Page 1 of 2

icc.com | cs@icc.com



Frequency(MHz)	1.0	4.0	10.0	16.0	20.0	31.25	62.5	100.0	200.0	250.0	450.0	600.0
Attenuation (dB/100m)	2.0	3.8	6.0	7.6	8.5	10.7	15.4	19.8	29.0	32.8	46.0	54.5
NEXT (dB)	79.3	70.3	64.3	61.2	59.8	56.9	52.4	49.3	44.8	43.3	39.5	37.6
PS NEXT Loss(dB)	72.3	63.3	57.3	54.2	52.8	49.9	45.4	42.3	37.8	36.3	32.5	30.6
ACRF (dB)	67.8	55.8	47.8	43.7	41.8	37.9	31.9	27.8	21.8	19.8	14.7	12.2
PS ACRF (dB)	64.8	52.8	44.8	40.7	38.8	34.9	28.9	24.8	18.8	16.8	11.7	9.2
Return Loss (dB)	20.0	23.0	25.0	25.0	25.0	23.6	21.5	20.1	18.0	17.3	15.5	14.7
ACR (dB)	80.3	69.5	61.4	56.8	54.5	49.4	40.0	33.2	20.1	15.1	5.0	N/A
PS ACR (dB)	78.3	67.5	59.4	54.8	52.5	47.4	38.4	31.2	18.1	13.1	3.0	N/A

NOTE: UNLESS OTHERWISE SPECIFIED

1. Standard:

A. UL444, ISO/IEC 11801, TIA-568-C.2 CAT 6; 2002/95/EC (RoHS), ICEA S-116-732

2. Construction:

- A. Size: 23 AWG
- B. Conductor: Solid Bare Copper
- C. Insulation: PE
- D. Jacket: PVC -- Ø0.23" ±.008 (5.8MM±0.2)
- E. Rip Cord: Polyester
- F. X Separator: PE

3. Electrical/Physical Properties:

- A. Rating Temp Voltage: 75°C, 300V
- B. Conductor Resistance: 80 OHM/100m/20°C Max
- C. Mutual Capacitance: 56 pF/M Max
- D. Dielectric Strength: AC 500V/1 Min
- E. Spark Test: 2.5 KV
- F. Flame Retardant Test: CMR
- G. DC Resistances Unbalance: 5% Max
- H. AC Leakage Current through Overall Jacket: AC 1500V ≤ 10mA
- I. Pair-To-Pair Capacitance Unbalanced: 330 pF/100m MAX
- J. Characteristic Impedance: 1~600 MHz 100±15 OHMS
- K. Propagation Delay: 600MHz 536nS/100m Max
- L. Velocity of Propagation (NVP): 68% Nominal
- M. Delay Skew: 1~600MHz 40nS/100m Max
- N. Installation Temperature: 32° ~ 140°F
- O. Operational Temperature: -4°~167°F

4. Packaging:

- A. Bulk Package: 1000 Feet/Pull Box
- B. Box Size: 16.30" x 10.00" x 16.00"
- C. Weight: 28.65 lbs.