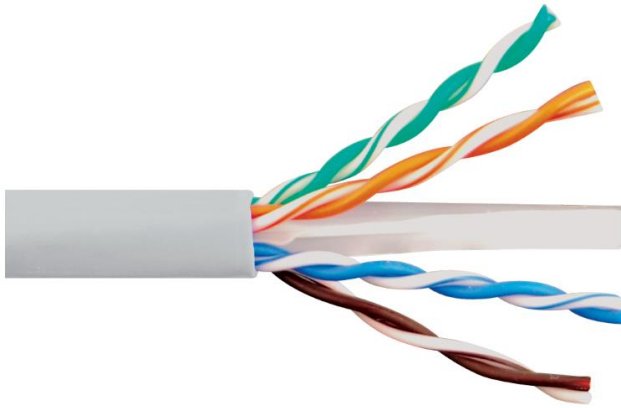


Category 6e 600MHz Plenum UTP Solid Cable

Package Include:

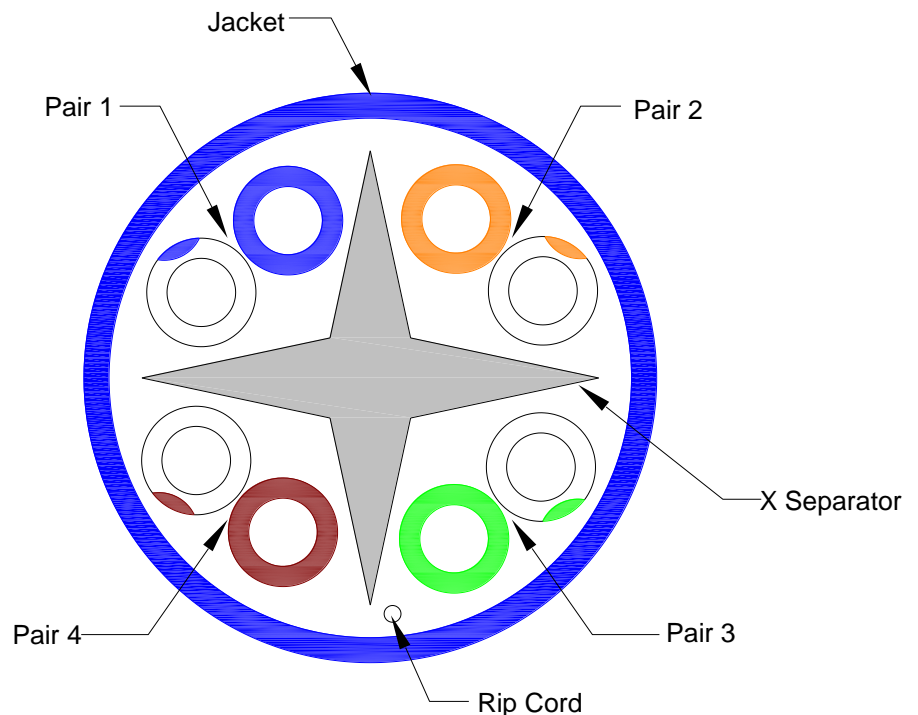
A. Category 6e UTP CMP Solid Cable, 1000 Feet



Features and Benefits

- Exceeds TIA 568-C.2 Category 6 standard
- Easy to dispense cable with REELEX® design box, saving you energy and time on the job site
- Convenient sequential footage markings for usage tracking
- UL listed for plenum applications
- UL verified for guaranteed +5dB over ANSI/TIA-568-C.2 standard performance requirements: NEXT (min), PSNEXT (min), PSELFEXT (min)
- Available in blue, gray, green, white, and yellow

Pair 1: Blue & White/Blue
 Pair 2: Orange & White/Orange
 Pair 3: Green & White/Green
 Pair 4: Brown & White/Brown



Part No: ICCABP6Exx
 Rev: H1
 Page 1 of 2

icc.com | cs@icc.com



Category 6 600MHz UTP Cable Electrical Performance (100 Meter Loop)															
Frequency(MHz)	1.0	4.0	10.0	16.0	20.0	31.25	62.5	100.0	150.0	200.0	250.0	350.0	500.0	550.0	600.0
Attenuation (dB/100m)	2.0	3.8	6.0	7.6	8.5	10.7	15.4	19.8	25.2	29.0	32.8	39.8	48.9	51.8	54.5
NEXT (dB)	20.0	23.6	26.0	26.0	26.0	25.0	23.5	22.5	21.6	21.0	20.5	19.8	19.0	18.8	18.6
PS NEXT Loss(dB)	77.3	68.3	62.3	59.2	57.8	54.9	50.4	47.3	44.4	42.8	41.3	39.1	36.8	36.2	35.6
ACRF (dB)	79.3	70.3	64.3	61.2	59.8	56.9	52.4	49.3	46.4	44.8	43.3	41.1	38.8	38.2	37.6
PS ACRF (dB)	77.3	66.5	58.3	53.7	51.3	46.2	37.0	29.5	21.3	15.8	10.5	N/A	N/A	N/A	N/A
Return Loss (dB)	75.3	64.5	56.3	51.7	49.3	44.2	35.0	27.5	19.3	13.8	8.5	N/A	N/A	N/A	N/A
ACR (dB)	72.8	60.8	52.8	48.7	46.8	4.9	36.9	32.8	29.0	26.8	24.8	21.9	18.8	18.0	17.2
PS ACR (dB)	69.8	57.8	49.8	45.7	43.8	39.9	33.9	29.8	26.0	23.8	21.8	18.9	15.8	17.2	14.2

Frequencies beyond 350 MHz is reference only

NOTE: UNLESS OTHERWISE SPECIFIED

- Standard:
 - ANSI/TIA 568-C.2
 - ANSI/TIA 862 (Building Automation)
 - ISO/IEC 11801 Ed. 2.0 (Class E)
 - ICEA S-102-700 (Category 6)
 - ICEA S-116-732
 - NEC/CEC Type CMP (NFPA 262)
 - RoHS Compliant Directive 2002/95/EC
 - UL 444
- Construction:
 - Size: 23 AWG
 - Conductor: Solid Bare Copper
 - Insulation: Fluoropolymer
 - Jacket: Low-Smoke, Flame-Retardant PVC -- Ø0.225" ±0.007 (5.7MM±0.2)
 - Rip Cord: Polyester
 - X Separator: PE
- Electrical/Physical Properties:
 - Rating Temp Voltage: 75°C, 300V
 - Conductor Resistance: 9.38 OHM/100m/20°C Max
 - Mutual Capacitance: 56 pF/M Max
 - Dielectric Strength: AC 1.5 KV/2 Sec
 - Spark Test: 2.5 KV
 - Flame Retardant Test: CMP
 - DC Resistances Unbalance: 5% Max
 - AC Leakage Current through Overall Jacket: AC 1500V ≤ 10Ma
 - Pair-To-Pair Capacitance Unbalanced: 330 pF/100m MAX
 - Characteristic Impedance: 1~500 MHz 100±15 OHMS
 - Propagation Delay: 600MHz 536nS/100m Max
 - Velocity of Propagation (NVP): 70% Nominal
 - Delay Skew: 1~600MHz 40nS/100m Max
 - Installation Temperature: 32° ~ 140°F
 - Operational Temperature: -4°~167°F
- Packaging:
 - Bulk Package: 1000 Feet/Pull Box
 - Box Size: 15.5" x 15.50" x 10.25"
 - Weight: 31.00 lbs

