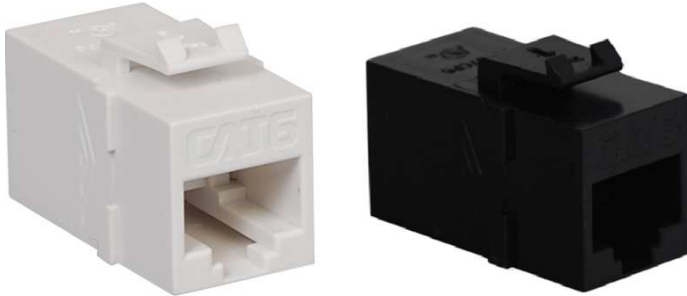


8P8C Category 6 Coupler Module

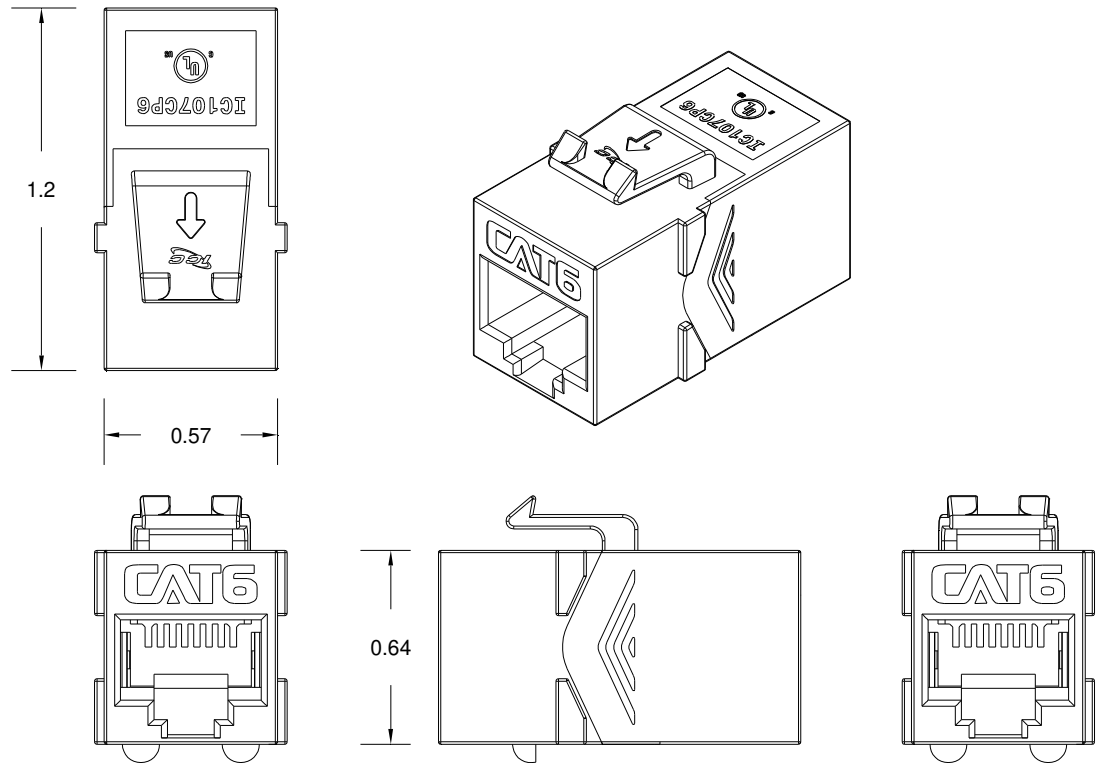
Package Include:

A. 8P8C Category 6 Coupler Module, **1 Piece**



Features and Benefits

- PCB technology provides maximum performance and superior signal quality
- Enhanced crosstalk cancellation reduces return loss and improves performance by rejecting noise and unwanted signals
- Reduced rear footprint allows for greater connectivity density and provides for more port configurations in a smaller area
- Backwards compatible to all lower rated category components
- Compatible with all IC107 faceplates, inserts, surface mount boxes, and blank patch panels
- Compatible with all IC108 furniture faceplates, bezels, and surface mount boxes
- Used with ICC Category 6 ICPCSK and ICPCSD patch cords
- Available in black and white
- ANSI/TIA-568-C and UL1863 compliant
- Country Of Origin: Taiwan
- TAA Compliant



NOTE: UNLESS OTHERWISE SPECIFIED

1. CAT 6 Module:

A. Electrical:

- Current Rating: 1.5 AMPS
- Voltage Rating: 150 Volts AC
- Dielectric Withstanding Voltage: 1000 Volts RMS, 60 HZ
- Insulation Resistance :> 10 MOHMS

B. Mechanical:

- Mating Force: 5 lbs. Max
- Unmating Force: 5 lbs. Max
- Plug Retention in Jack: 20 lbs. Min
- Durability: 750 Cycles

C. Material & Finish:

- Housing: ABS UL 94V-0
- Contact: Phosphor Bronze Alloy Plated with 50 µin of Gold over 70~100 µin of Nickel
- Gold Plating: 1.27 Micron/ 50 Micro inch Min

D. Colors: XX: BK-Black & WH-White

| FREQUENCY (MHz) | NEXT (dB) | RETURN (dB) | ACRF (dB) | INSERTION (dB) |
|--------------------|--------------|----------------|--------------|-------------------|
| 10.00 | 56.6 | 19.0 | 43.3 | 6.3 |
| 100.00 | 39.9 | 12.0 | 23.3 | 21.3 |
| 200.00 | 34.8 | 9.0 | 17.2 | 31.5 |
| 250.00 | 33.1 | 8.0 | 15.3 | 35.9 |

| WIRING DIAGRAM | |
|----------------|-----|
| PIN | PIN |
| 1 | 1 |
| 2 | 2 |
| 3 | 3 |
| 4 | 4 |
| 5 | 5 |
| 6 | 6 |

