

Quick Start Guide

GV-IP Speed Dome



- **GV-SD2322-IR**
- **GV-SD2722-IR**
- **GV-SD3732-IR**
- **GV-SD4825-IR**
- **GV-SD4834-IR**

Before attempting to connect or operate this product, please read these instructions carefully and save this manual for future use.

ISD2722IR-QG-C



© 2021 GeoVision, Inc. All rights reserved.

Under the copyright laws, this manual may not be copied, in whole or in part, without the written consent of GeoVision.

Every effort has been made to ensure that the information in this manual is accurate. GeoVision, Inc. makes no expressed or implied warranty of any kind and assumes no responsibility for errors or omissions. No liability is assumed for incidental or consequential damages arising from the use of the information or products contained herein. Features and specifications are subject to change without notice.

GeoVision, Inc.
9F, No. 246, Sec. 1, Neihu Rd.,
Neihu District, Taipei, Taiwan
Tel: +886-2-8797-8377
Fax: +886-2-8797-8335
<http://www.geovision.com.tw>

Trademarks used in this manual: *GeoVision*, the *GeoVision* logo and *GV* series products are trademarks of GeoVision, Inc. *Windows* is the registered trademark of Microsoft Corporation.

November 2021

Scan the following QR codes for product warranty and technical support policy:



[Warranty]



[Technical Support Policy]

Contents

Note for Connecting to GV-VMS / DVR / NVR.....	ii
Note for Recording.....	iii
Note for Installing Camera Outdoor.....	iv
1. Introduction	1
1.1 Packing List	1
1.2 Optional Accessories	2
1.3 Overview.....	2
2. Installation	3
3. Connecting the Camera	7
4. Accessing the Camera	10
4.1 System Requirements.....	10
4.2 Looking Up the Dynamic IP Address.....	11
4.3 Configuring the IP Address	12
5. The Web Interface.....	13
5.1 PTZ Control Panel	17
6. Upgrading System Firmware	20
7. Restoring to Factory Default.....	21
7.1 Using the Web Interface	21
7.2 Directly on the Camera	22

Note for Connecting to GV-VMS / DVR / NVR

The GV-IP Speed Dome is designed to work with GV-VMS / DVR / NVR, a video management system. Note the following when the camera is connected to GV-VMS / DVR / NVR:

Once the camera is connected to the GV-VMS / DVR / NVR, the resolution set on the GV-VMS / DVR / NVR will override the resolution set on the camera's Web interface. You can only change the resolution settings through the Web interface when the connection to the GV-VMS / DVR / NVR is interrupted.

Note for Recording

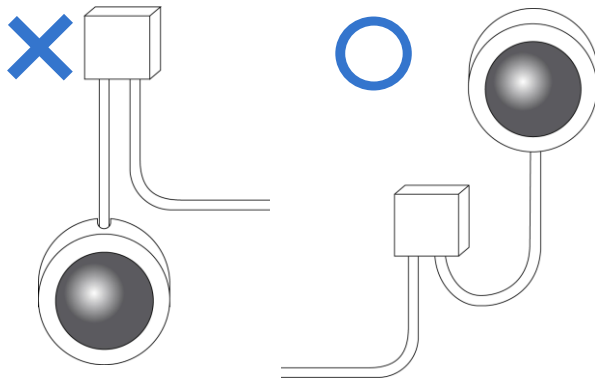
Mind the following when using a memory card for recording:

- Recorded data on the memory card can be damaged or lost if the data are accessed while the camera is under physical shock, power interruption, memory card detachment or when the memory card reaches the end of its lifespan. No guarantee is provided for such causes.
- The stored data can be lost if the memory card is not accessed for a long period of time. Back up your data periodically if you seldom access the memory card.
- Memory cards are expendable and their durability varies according to the conditions of the installed site and how they are used. Back up your data regularly and replace the memory card annually.
- To avoid power outage, it is highly recommended to apply a battery backup (UPS).
- For better performance, it is highly recommended to use Micro SD card of MLC NAND flash, Class 10.
- Replace the memory card when its read/write speed is lower than 6 MB/s or when the memory card is frequently undetected by the camera.

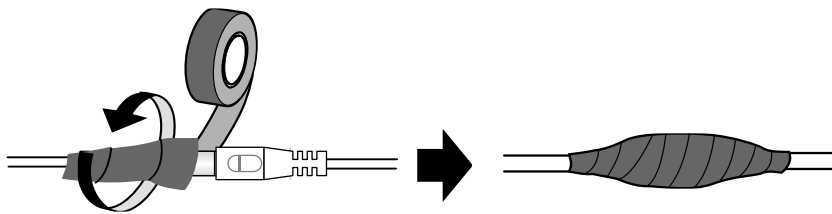
Note for Installing Camera Outdoor

When installing the camera outdoor, be sure that:

1. The camera is set up above the junction box to prevent water from entering the camera along the cables.



2. Any power, audio and I/O cables are waterproofed using waterproof silicon rubber or the like.



3. The screws are tightened and the cover is in place after opening the camera cover.

1. Introduction

Welcome to the *GV-IP Speed Dome Quick Start Guide*. In the following sections, you will learn the basic installations and configurations. For a detailed user manual, see the *GV-IP Speed Dome User's Manual* on the company [website](#).

1.1 Packing List

- IR IP Speed Dome
- 24V AC Power Adapter (only for GV-SD2322-IR / SD2722-IR / SD3732-IR)



- M4 Hex Key
- Waterproof Rubber Set



- Waterproof Guidelines
- Download Guide

1.2 Optional Accessories

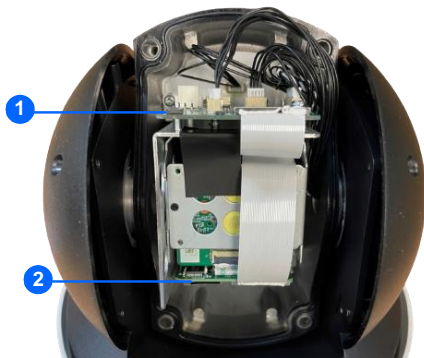
Optional devices can expand the capabilities and versatility of your camera. Contact your dealer for more information.

Name	Details
GV-Mount Accessories	The GV-Mount Accessories provide a comprehensive lineup of accessories for installation on ceiling, wall and pole. For details, see <i>GV-Mount Accessories Installation Guide</i> .

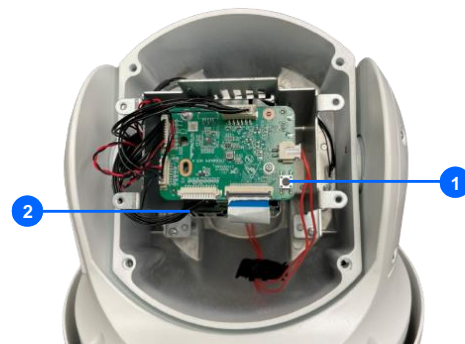
1.3 Overview



GV-SD2322-IR / SD2722-IR / SD3732-IR



GV-SD4825-IR



GV-SD4834-IR

No.	Name	Function
1.	Default Button	Resets all configurations to default factory settings. See 7. <i>Restoring to Factory Default</i> .
2.	Micro SD Card Slot	Inserts a micro SD card to store recording data.

2. Installation

You can separately purchase optional mounting accessories to mount your GV-IP Speed Dome on a wall, ceiling or pole. Make sure the wall is strong enough to support the camera and the mount. For details, see *GV-Mount Accessories Installation Guide*.

Required Items

- GV-Mount210 (purchased required)
 - Wall screws x 4 (user-prepared)
-

Note: [GV-SD2722-IR / SD3732-IR / SD4825-IR / SD4834-IR](#) supports a series of Intelligent functions, which work best when the installation abides by specific requirements. See [4.6.1 Note for Face Detection](#), and [Note for People Counting](#), and [Smart Settings in Chapter 4, GV-IP Speed Dome User's Manual](#) for details.

1. Unscrew the back cover of the camera.



For **GV-SD2322-IR / SD2722-IR / SD3732-IR / SD4834-IR**

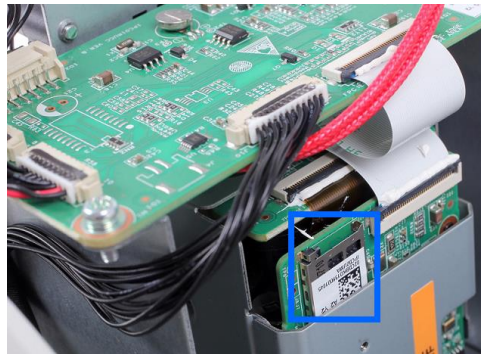


For **GV-SD4825-IR**

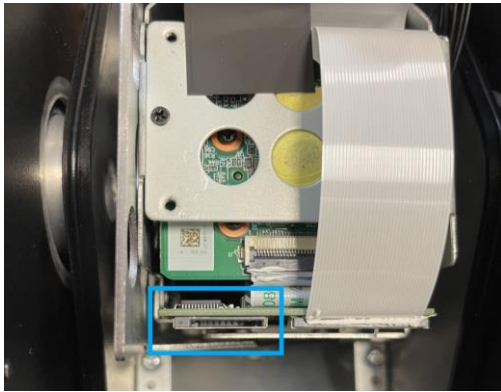


For **GV-SD4834-IR**

2. Insert the micro SD card into the slot, and secure the back cover of the camera.



GV-SD2322-IR / SD2722-IR / SD3732-IR



GV-SD4825-IR



GV-SD4834-IR

Note: Be sure to format the memory card on the camera's Web interface (**Setup > Storage > Storage**).

2 Installation

3. Place the pendant tube on the wall, and mark the position of the screw holes.



4. Drill holes on the wall, and secure the pendant tube to the wall with 4 self-prepared screws.
5. Attach the safety lock of the camera to the pendant tube.



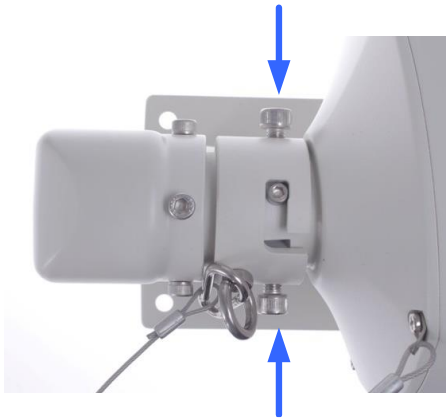
6. Thread the data cable through the pendant tube.



7. Attach the camera to the pendant tube, rotate the camera until it is locked into position, and secure the indicated screws.



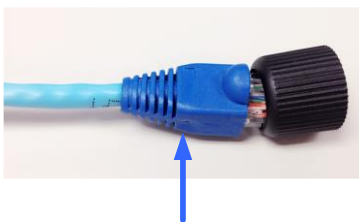
8. Insert the pendant mount screws and tighten with the supplied M4 hex key.



9. Thread the Ethernet cable through the waterproof rubber set as shown below.



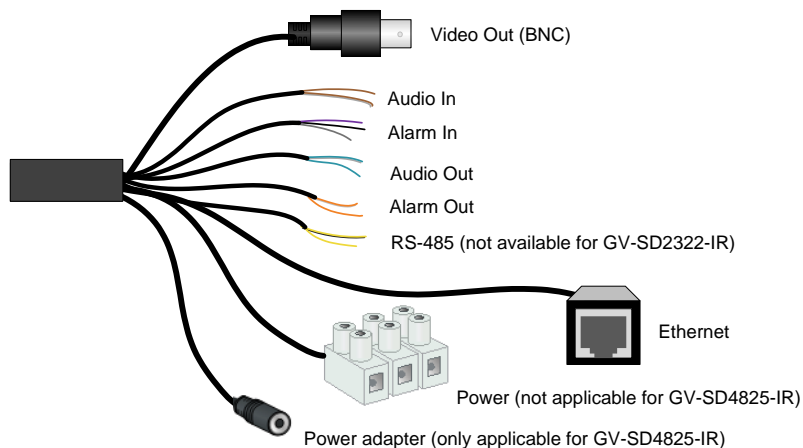
Note: The size of RJ-45 connector must be within 14 mm to go through the waterproof rubber set.



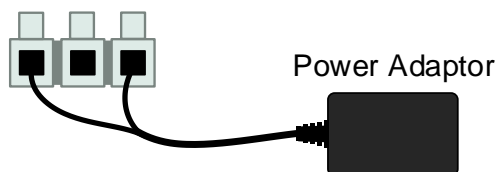
Unfit size of RJ45 Connector

3. Connecting the Camera

The camera comes with a data cable that allows you to connect the camera to the power adapter, microphone, speaker, and I/O devices.



1. Connect the supplied power adapter to the 3-pin terminal block, or connect the Ethernet cable to the PoE port. Either of the red or black cables can be used for anode (+) and the cathode (-).



2. Connect a standard network cable to the Ethernet cable of the camera.
3. Optionally connect the TV-out (BNC) cable to a monitor. The TV-out function can be used during installation to adjust the camera image.
4. Optionally connect I/O devices, speaker and microphone to the camera. You can connect up to 2 alarm inputs and 1 output device. See the *Wire Definition* section below.

Each time the camera is powered on, it will perform a self-test to check the Pan/Tilt/Zoom (PTZ) function. After the self-test, you can operate the camera.

Note: If you are using your own power adapter, you may need to ground the camera using the yellow cable (GND) on the 3-pin terminal block.

Wire Definition

GV-SD2322-IR / SD2722-IR / SD3732-IR

No.	Wire	Definition
1	Brown	Audio In
2	Brown / White	GND
3	Green	Audio Out
4	Green / White	GND
5	Gray	Alarm In 1
6	Purple	Alarm In 2
7	Black	GND
8	Orange	Alarm In -
9	Orange / White	Alarm Out +
10	Yellow	RS-485 – (GV-SD2722-IR / SD3732-IR)
11	Yellow / Black	RS-485 + (GV-SD2722-IR / SD3732-IR)

GV-SD4825-IR / SD4834-IR

No.	Wire	Definition
1	Brown	Audio In
2	Green	Audio Out
3	Green / White	GND (GV-SD4825-IR)
4	Brown / White	GND (GV-SD4834-IR)
5	Gray	Alarm In 1
6	Purple	Alarm In 2
7	Black	GND
8	Orange	Alarm Out –
9	Orange / White	Alarm Out +

3 Connecting the Camera

10	Yellow	RS-485 –
11	Yellow / Black	RS-485 +
12	Yellow & Green	GND (GV-SD4834-IR)
13	Black	AC 24V / DC 24V- (GV-SD4834-IR)
14	Red	AC 24V / DC 24V+ (GV-SD4834-IR)

4. Accessing the Camera

4.1 System Requirements

Once installed, your camera is accessible over the network. Make sure your PC has good network connection, and meet the following requirement:


CPU	Intel Core i5-4670, 3.40 GHz
Memory	DDR3 8 GB RAM
On Board Graphics	Intel HD Graphics 4600 (Versions of driver from year 2014 or later required)
Web Browsers	<ul style="list-style-type: none">● Internet Explorer 11.0 or above● Google Chrome● Mozilla Firefox● Safari
Note: <ol style="list-style-type: none">1. Some functions are not available on non-IE browsers; e.g. Local Settings (see 4.1.2 Local Settings in the <i>User's Manual</i>) is not supported by Google Chrome.2. Only H.264 codec is supported for live view on non-IE browsers.	

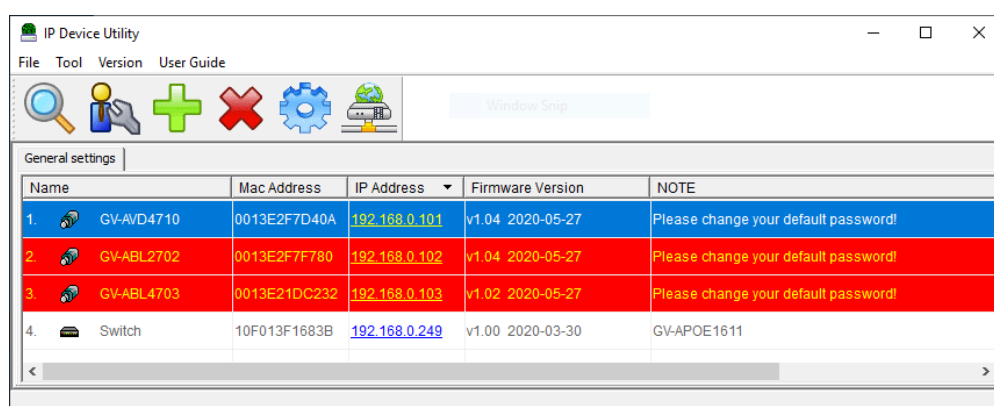
4.2 Looking Up the Dynamic IP Address

By default, when the camera is connected to LAN with a DHCP server, it is automatically assigned with a dynamic IP address. Follow the steps below to look up its IP address.

Note:

1. The computer you use to configure the IP address must be under the same LAN with your camera.
 2. Multilingual Web interface is only supported by **GV-SD2722-IR / SD3732-IR**.
 3. By default, the Administrator's username is **admin** and cannot be modified.
-

1. Download and install the **GV-IP Device Utility** program from the company [website](#)
2. On the GV-IP Utility window, click the  button to search for the IP devices connected in the same LAN. Click the **Name** or **Mac Address** column to sort.
3. Find the camera with its Mac Address, click on its IP address.

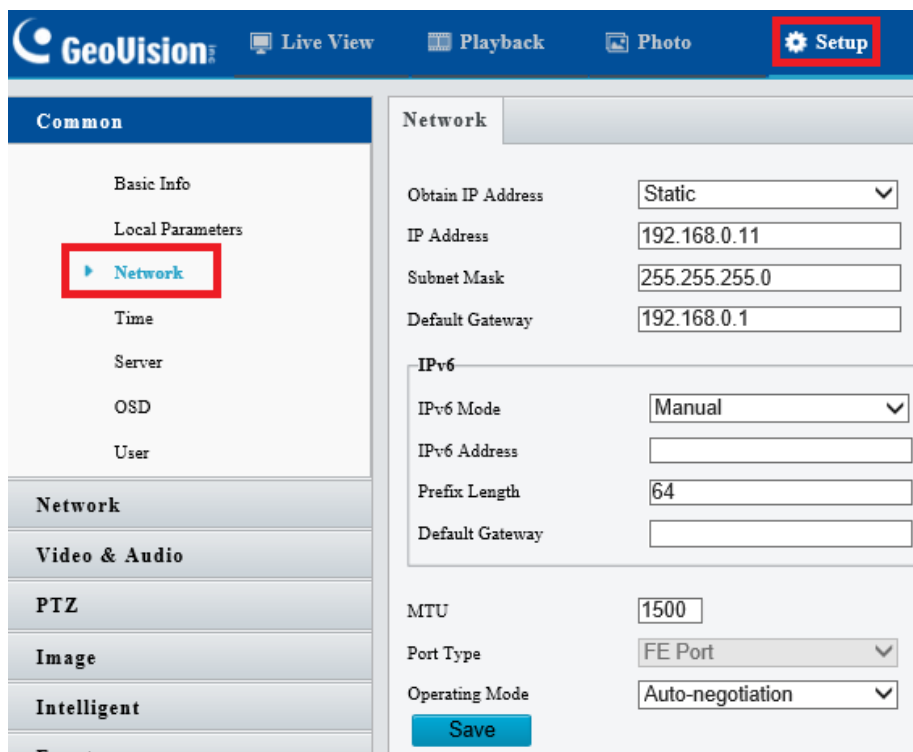


4. For the first-time users, you will be requested to set up a password.
5. Type a new password and click **OK**.
6. Type your username and password on the login page and click **Login**.

4.3 Configuring the IP Address

If the camera is connected to LAN without a DHCP server, the default IP address will be **192.168.0.10**. Follow the steps below to modify the IP address to avoid IP conflict with other GV-IP devices on the same LAN.

1. Open your web browser, and type the default IP address **192.168.0.10**.
2. Type your username and password. Click **Login**.
3. Click **Setup**, select **Common** in the left menu and select **Network**.

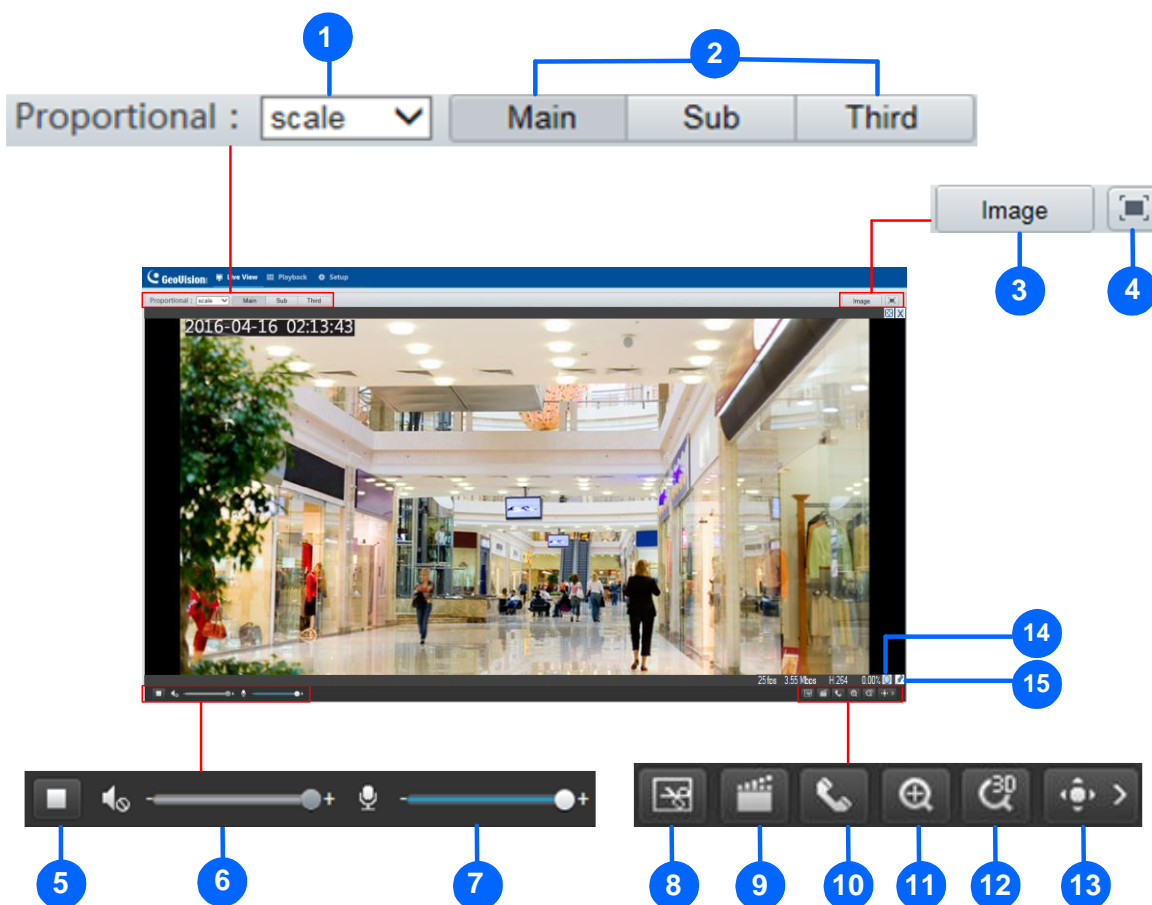


4. Select **Static IP** from the IP Obtain Mode drop-down list.
5. Enter the IP address, subnet mask, and default gateway address. Make sure that the IP address of the camera is unique in the network.
6. Click **Save**.











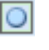

5. The Web Interface

Once you log in the Web interface, you will see the live view as shown below.

For GV-SD2322-IR



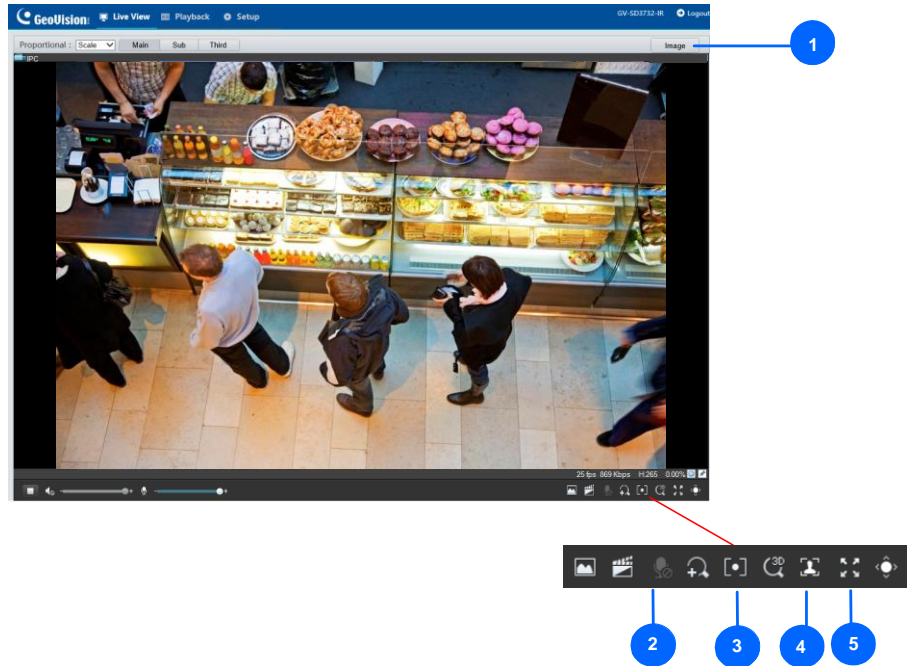
No.	Name	Function
1	Proportional	Set the display ratio of the image. <ul style="list-style-type: none"> • Scale: display images by 16:9. • Stretch: display images by window size. • Original: display images in its original size.
2	Live Stream	Select a live video stream: main stream, sub stream or third stream.
3	Image	Open the image setting page.
4	Full Screen Mode	Display in full screen mode.
5	Play/Stop	Play or stop live video.






6	Volume	Adjust the audio output volume on the PC.
7	Microphone	Adjust the microphone volume on the PC during audio communication between the PC and the camera.
8	Snapshot	Take a snapshot of the current image displayed on the PC.
9	Local Recording	Start  or stop  local recording.
10	Audio Communication	Start  or stop  audio communication between the PC and the camera.
11	Digital Zoom	Start  or stop  digital zoom.
12	3D Positioning	Start  or stop  3D positioning (optical zoom).
13	PTZ control panel	Show  or hide  the PTZ control panel. -- See 5.1 <i>PTZ Control Panel</i> .
14		Reset the packet loss rate to zero.
15		Display packet loss rate and bit rate information in the bottom.



Note:

1. The paths for saving snapshots and local recordings are set in *System Configuration*.
2. The buttons (No. 14 and No. 15) will appear on the floating toolbar after you move the mouse cursor on a live view window.

For GV-SD2722-IR / SD3732-IR

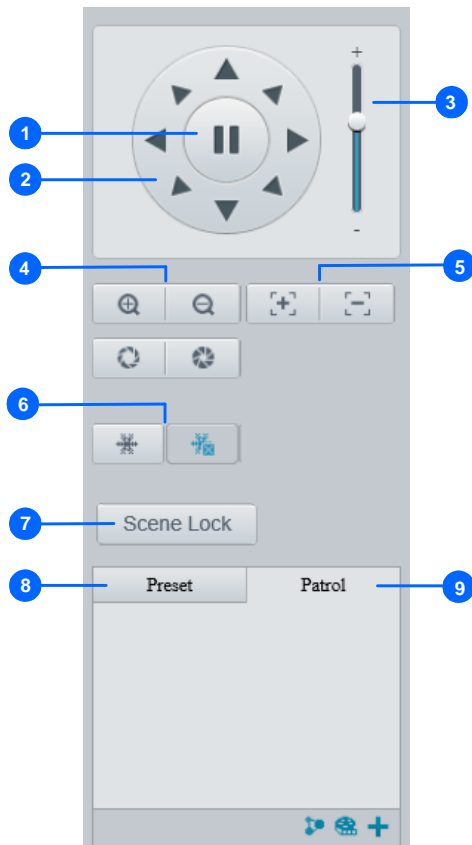


No.	Name	Function
1	Image	Open the image setting page. -- See 4.5.1 Image in the <i>User's Manual</i> .
2	Two-way Audio	Start  or stop  two-way audio.
3	Area Focus	<p>Start  or stop  area focus.</p> <p>By activating this function, you can set the camera focus based on a defined area of the live view. To activate Area Focus, follow the steps below:</p> <p>Step 1: Click  on the toolbar.</p> <p>Step 2: Click and drag on the live view to specify an area. The focus of the live view changes to the specified area.</p>

4	Face Snapshot (only applicable to GV-SD4825-IR / SD4834-IR)	<p>Start  or stop  face snapshot.</p> <p>By activating this function, the camera takes face snapshots, and displays them on the right of the live view window. Before activating this function, you must enable Face Detection - See <i>4.6.7 Face Detection</i> in the <i>User's Manual</i>. To display face attributes detected, define Attribute Collection and enable Display Attributes beforehand - See <i>4.1.2 Local Setting</i> and <i>4.6.10 Attribute Collection</i> in the <i>User's Manual</i>.</p>
5	Full Screen Mode	Display in full screen mode.

5.1 PTZ Control Panel

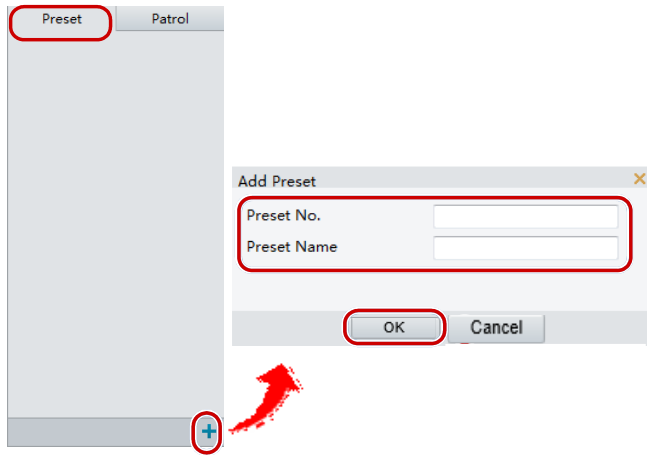
You can find the PTZ control panel to the right of the live view.




No.	Item	Function
1	Auto Pan	Start or stop auto panning of the camera.
2	PTZ Control Panel	Control the direction of the camera and release the control.
3	PTZ Speed	Adjust the moving speed of the PTZ camera.
4	Zoom	Adjust the camera's zoom (optical).
5	Focus	Adjust the camera's focus.
6	Snow	Turn on or off the snow control. When enabled, the camera will rotate to remove accumulated snow if detected by the camera.
7	Screen Lock	Lock or unlock the camera direction.
8	Preset	Select a preset and the camera goes to the selected preset. -- See the <i>Adding a Preset Point</i> section below.
9	Patrol	Select a patrol route. – See the <i>Adding a Patrol Route</i> section below.

Adding a Preset Point

1. Once **Preset** is selected in the control panel, adjust the dome view to the desired direction, zoom and focus.



2. Click the **Add** button  to add it as a preset.
3. Enter a number and name for the preset and click **OK**.

Adding a Patrol Route

1. On the control panel, click the **Add** button  to add a patrol route.

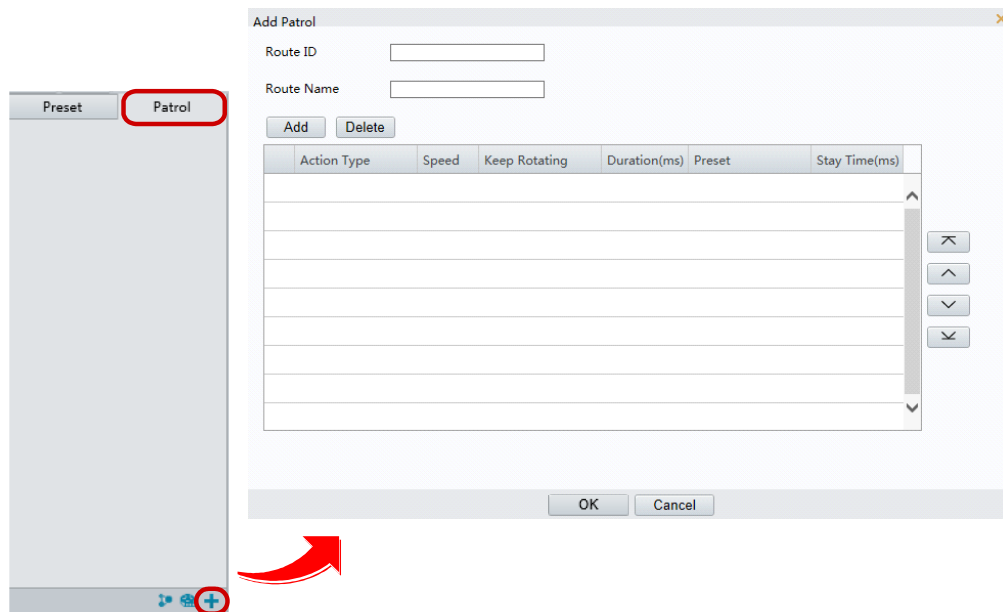


Figure 3-5

2. On the **Add Patrol** page, type the desired route ID and name.
3. Click **Add** to add a patrol action. Use the buttons to adjust the sequence of the actions and click **OK**.

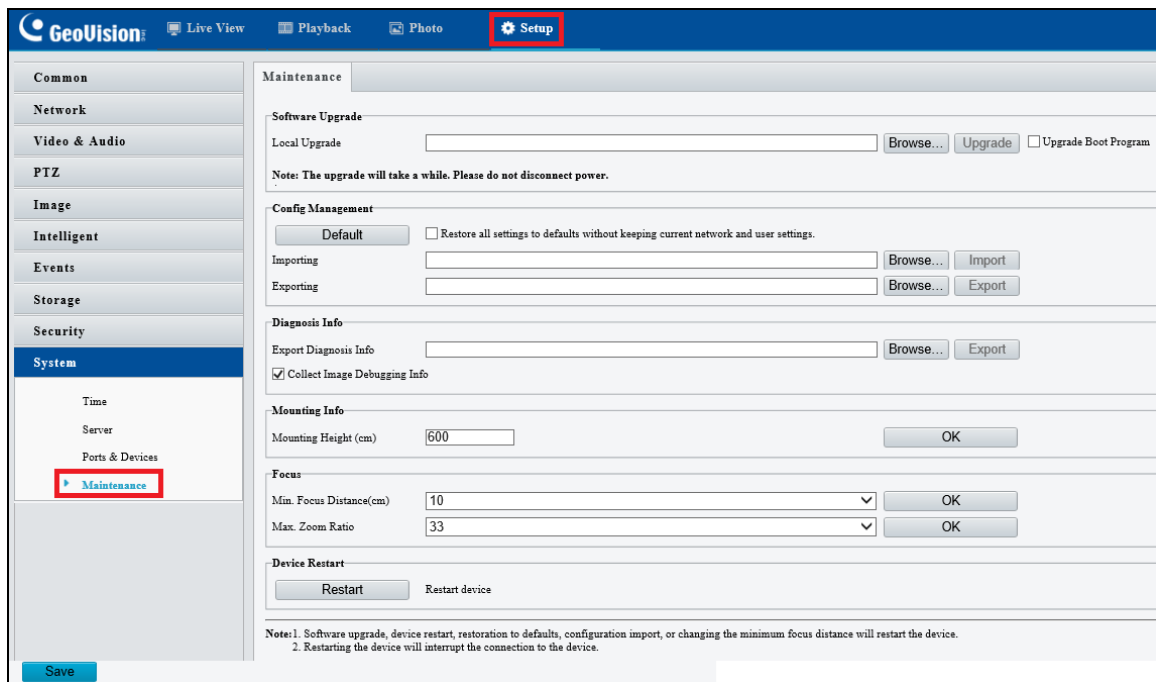
Note:

1. It is recommended that the first action type is **Go to Preset**.
 2. If **Keep Rotating** is selected, the camera will rotate at the set speed in the set direction or Position for a certain amount of time.
 3. For more details on other available PTZ movement settings, see *Chapter 3 PTZ Control Panel, GV-IP Speed Dome User's Manual*.
-

6. Upgrading System Firmware

GeoVision periodically releases the updated firmware on the [website](#). To load the new firmware into the camera, follow the instructions below.

1. At the top of the Web interface, click **Setup**.
2. In the left menu, select **System** and select **Maintenance**. This page appears.



3. Click the **Browse** button to locate the firmware file (.zip) saved at your local computer.
4. Optionally select **Upgrade Boot Program** to reboot the camera after a successful upgrade.
5. Click the **Upgrade** button to process the upgrade.

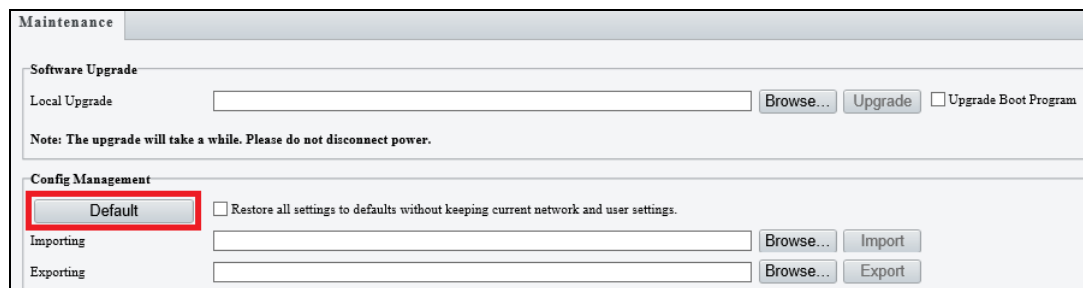
7. Restoring to Factory Default

If for any reason the camera is not responding correctly, you can restore the camera back to its factory default settings using the Web interface or the **Default Button**.

7.1 Using the Web Interface

To restore to default settings using the Web interface:

1. At the top, click **Setup**.
2. In the left menu, select **System** and select **Maintenance**.
3. Under the **Config Management** section, click the **Default** button.



The screenshot shows a web interface for camera maintenance. The top section is titled "Maintenance" and contains a "Software Upgrade" section with a "Local Upgrade" input field, "Browse..." and "Upgrade" buttons, and an "Upgrade Boot Program" checkbox. A note below states: "Note: The upgrade will take a while. Please do not disconnect power." The bottom section is titled "Config Management" and features a "Default" button highlighted with a red box. To its right is a checkbox labeled "Restore all settings to defaults without keeping current network and user settings." Below this are "Importing" and "Exporting" sections, each with an input field and "Browse..." and "Import" or "Export" buttons.

7.2 Directly on the Camera

1. Unscrew the back cover of the camera.



GV-SD2322-IR / SD2722-IR /
SD3732-IR / SD4834-IR

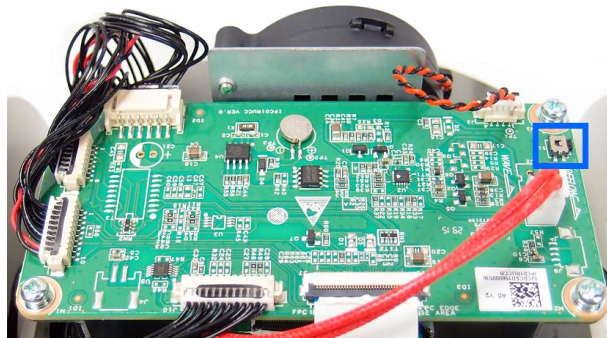


GV-SD4825-IR

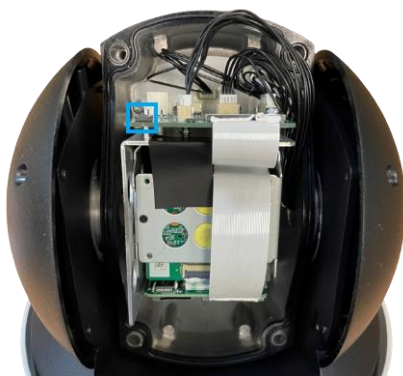


GV-SD4834-IR

2. Press and hold the **default** button for about 30 seconds.



GV-SD2322-IR / SD2722-IR / SD3732-IR



GV-SD4825-IR



GV-SD4834-IR

3. When the camera rotates twice, the process of loading default is completed and the camera robots automatically.