

Quick Start Guide

GV-CR1320 Camera Reader



Thank you for purchasing GV-CR1320 Camera Reader. This guide is designed to assist the new user in getting immediate results from the controllers. For advanced information on how to use GV-CR1320, please refer to GV-CR1320 Camera Reader User's Manual



© 2021 GeoVision, Inc. All rights reserved.

Under the copyright laws, this manual may not be copied, in whole or in part, without the written consent of GeoVision.

Every effort has been made to ensure that the information in this manual is accurate. GeoVision, Inc. makes no expressed or implied warranty of any kind and assumes no responsibility for errors or omissions. No liability is assumed for incidental or consequential damages arising from the use of the information or products contained herein. Features and specifications are subject to change without notice.

GeoVision, Inc.
9F, No. 246, Sec. 1, Neihu Rd.,
Neihu District, Taipei, Taiwan
Tel: +886-2-8797-8377
Fax: +886-2-8797-8335
<http://www.geovision.com.tw>

Trademarks used in this manual: *GeoVision*, the *GeoVision* logo and *GV* series products are trademarks of GeoVision, Inc. *Windows* is the registered trademark of Microsoft Corporation.

October 2021

Scan the following QR codes for product warranty and technical support policy:



[Warranty]



[Technical Support Policy]

Contents

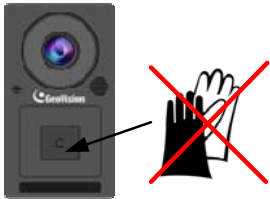
Installation Considerations	ii
1. Introduction	1
1.1 System Requirements.....	1
1.2 Packing List.....	2
1.3 Optional Accessories	3
1.4 Overview	4
2. Installation.....	6
3. Connecting GV-CR1320.....	7
3.1 Connecting by Network.....	7
3.2 Connecting via GV-WTR.....	7
3.3 Connecting Input Devices	8
3.4 Connecting Output Devices	8
3.5 Powering on GV-CR1320.....	9
4. Accessing GV-CR1320	10
4.1 Creating Login Credentials	10
4.2 Web Browser.....	11
4.3 Checking the Dynamic IP Address.....	12
4.4 Assigning an IP Address.....	13
5. The Web Interface.....	15
6. Upgrading System Firmware	16
7. Restoring to Factory Default.....	17
7.1 Using the Web Interface	17
7.2 Directly on the Camera	17

Installation Considerations

To make sure the finger and face of the cardholder can be detected, follow the instructions below to set up GV-CR1320.

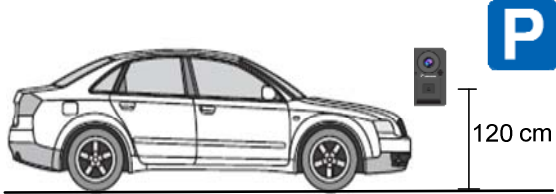
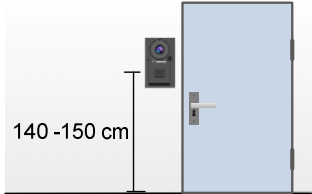
Touchpad Recognition:

- The touchpad cannot be activated with gloves on.



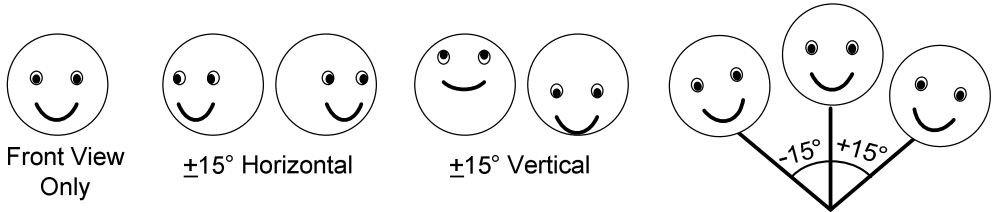
Installation Height:

- When placed at a building gate, GV-CR1320 should be about 1.4-1.5 meters above the ground.
- When placed at a parking lot gate, GV-CR1320 should be about 1.2 meters above the ground to match the height of vehicles.



Face Detection Limitations

- GV-CR1320 cannot detect the face of cardholders wearing facial masks or sunglasses.
- GV-CR1320 is designed to detect front-view faces only. If the face is slightly tilted horizontally or vertically, the tilt angle cannot exceed 15°.



Lighting Conditions

- Avoid placing GV-CR1320 where the light source is directly behind the subject.
- Prevent light from directly falling onto the GV-CR1320's camera lens.

1. Introduction

Welcome to the *GV-CR1320 Camera Reader Quick Start Guide*. In the following sections, you will learn the basic installations and configurations of GV-CR1320. For details, see the *GV-CR1320 Camera Reader User's Manual* from our [website](#).

1.1 System Requirements

To access the functions and settings of GV-CR1320 on the Web interface, ensure your PC has good network connection and use one of the following web browsers:

- Internet Explorer 9 x or later
- Microsoft Edge
- Google Chrome
- Firefox

Note: For users of non-IE browsers, download **GV-Web Viewer** to access full functioning user interface. See *Accessing Your Surveillance Images*, Chapter 3, [GV-CR1320 Camera Reader User's Manual](#).

Compatible GV-AS Controller

- **GV-AS210 / 2110 / 2120:** V2.20 or later
- **GV-AS410 / 4110 / 4111:** V2.20 or later
- **GV-AS810 / 8110 / 8111:** V2.20 or later
- **GV-AS1520:** V2.20 or later
- **GV-AS1620:** V1.00 or later
- **GV-CS1320:** V3.00 or later

Compatible GV-Software

- **GV-ASManager:** V5.1.0 or later
- **GV-VMS:** V17.1.0.100 or later
- **GV-DVR / NVR:** V8.7.6 or later
- **GV-Control Center:** V3.5.1 or later
- **GV-Center V2:** V17.1.0 or later
- **GV-Vital Sign Monitor:** V17.1.0 or later
- **GV-Recording Server:** V1.4.2 or later

1.2 Packing List

- GV-CR1320



- Mounting Plate



- Standard Screw x 2



- Plastic Screw Anchor x 2



- Security Tube



- Torx Wrench



- Silica Gel Bag
- Micro SD Card 2 GB
(inserted and formatted)

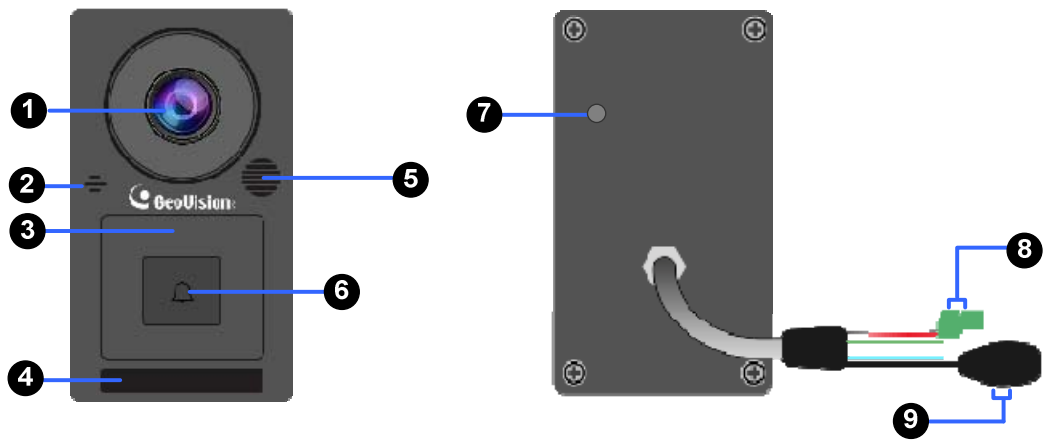
- Download Guide
- Warranty Card

1.3 Optional Accessories

Optional devices can expand the capabilities and versatilities of your GV-CR1320. Consult our sales representatives for more information.

GV-AS2120 / 4110 / 4111 / 8110 / 8111	GV-AS series are controllers used to manage up to 4/8 doors via connected readers and have the capability of storing and granting / restricting access for up to 100,000 cards.
GV-AS1520	GV-AS1520 is a controller with built-in Radio Frequency Identification (RFID) reader designed for parking lot management and stores up to 100,000 cards.
GV-AS1620	GV-AS1620 is a single door controller with three types of interfaces, Wiegand, RS-485, TCP/IP, to accommodate various readers for entry and exit management.
GV-CS1320	GV-CS1320 is an access controller with a built-in 2 MP camera and 13.56 MHz reader that can manage up to 40,000 access cards and be connected to a maximum of 2 extended readers.
GV-AS ID Card & GV-AS ID Tag	125 KHz and 13.56 MHz cards / key fobs are available.
GV-IB25 / 65 / 85 Infrared Button	GV-IB25 / 65 / 85 Infrared Button detects infrared movement within 3 to 12 cm and allows you to open the door with a wave of hand.
Electric Lock	Three types of electric locks are available: electromagnetic lock, electric bolt and electric strike.
Push Button Switch	The push button switch can be integrated with access control system, allowing door exit by momentarily activating or deactivating the electric locking device. Both American standard and European standard push buttons are available.
GV-WTR	GV-WTR is a converter designed for converting Wiegand interface to RS-485 interface, and vice versa. It enables 3rd party readers to be connected to RS-485 GV-Controllers, as well as allowing GV-AI FR (software) and GV-CR1320 (RS-485 camera reader) to be connected to 3rd-party Wiegand controllers.
Power Adapter	Contact our sales representative for the countries and areas supported.

1.4 Overview

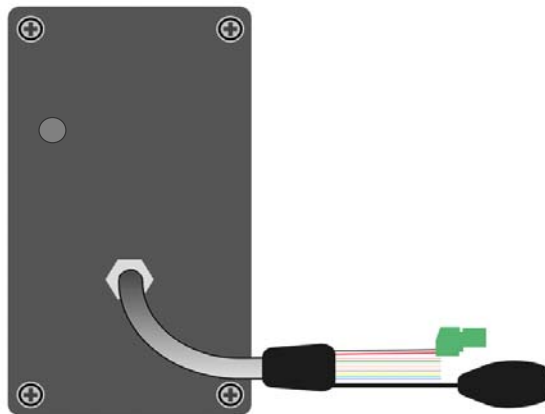


No.	Name	Function
1	Lens	Receives image.
2	Microphone	Receives sound from GV-CR1320.
3	Card Reader	Reads ID cards or ID tags.
4	IR LEDs	Automatically illuminates for night time use.
5	Speaker	Talks to the surveillance area from the local computer.
6	Touchpad and LED status	Touch to activate the talk mode. See the <i>LED and Beeper Status</i> below.
7	Default Button	Resets all configurations to default factory settings. See <i>7 Restoring to Factory Default</i> .
8	Power Cable	Connects to power supply. See <i>3.4 Powering on GV-CR1320</i> .
9	Ethernet Port	Connects to network and power supply. See <i>Chapter 3 Connecting GV-CR1320</i> .

LED and Beeper Status

Condition	LED	Beeper
Ready	Blue (Connected to GV-ASManager) Purple (Disconnected from GV-ASManager)	N/A
Access Denied	Displays red LED momentarily	Two short beeps
Access Granted	Displays green LED momentarily	One long beep
Touchpad activated	Flashes blue momentarily	One short beep
Touchpad ignored	Returns to blue/purple LED	Three short beeps after 30 seconds
Talk mode enabled	Constant yellow	N/A

Wire Definition



Wire	Definition
RJ-45	Ethernet
Red	12V DC
Black	GND
Yellow	Input 1
Brown	Input COM
Light Red	Input 2
Blue	RS-485 +
Light Blue	RS-485 -
Gray	Output NO
Purple	Output COM
Orange	Output NC
Green	Not functional
White	Not functional

2. Installation

After the location of your GV-CR1320 is decided, follow the steps below to install the camera access controller.

1. Attach the single gang power box to the wall.
2. Place the mounting plate on the single gang power box and secure with the 2 standard screws provided.
3. Place GV-CR1320 on the mounting plate together with the single gang power box and thread the cables through the holes.
4. Secure the security screw on the bottom with the mounting plate.



Step 2



Step 3

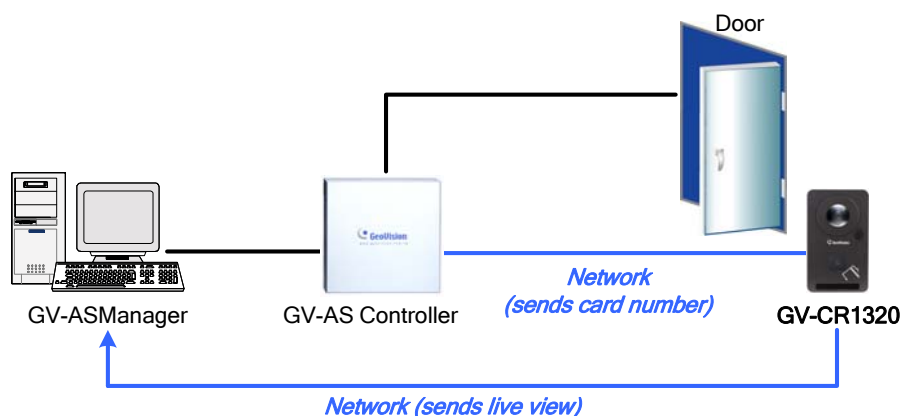


Step 4

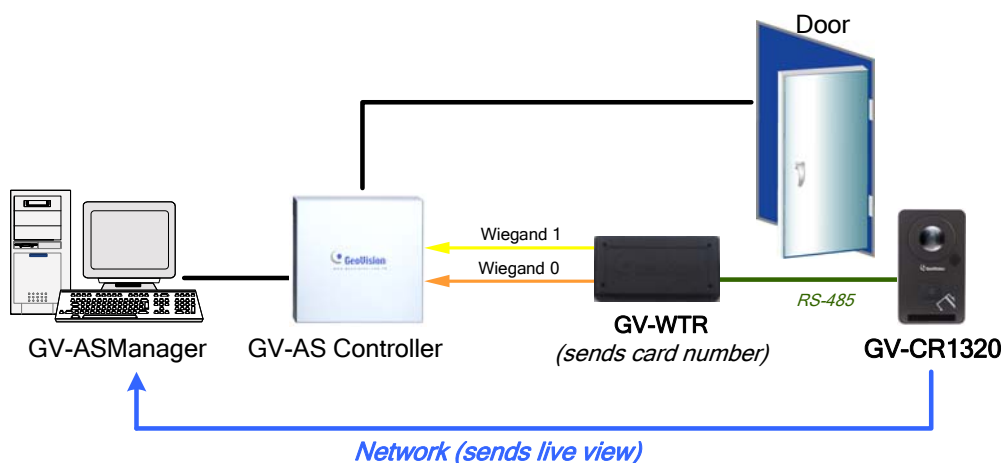
3. Connecting GV-CR1320

There are two ways to connect GV-CR1320 to a GV-AS Controller, as illustrated below:

3.1 Connecting by Network



3.2 Connecting via GV-WTR



Note:

1. When connected via GV-WTR, snapshots by GV-CR1320, will not be sent to GV-ASManager upon access.
 2. Make sure the GV-WTR is connected to the GV-AS Controller using the Wiegand Data 1 (Output) and Wiegand Data 0 (Output) wires, respectively yellow and orange. For the wire definition of GV-WTR, see *GV-WTR Wiegand Converter Installation Guide* from our [website](#)
-

3.3 Connecting Input Devices

All inputs are **dry contact** and can be configured as normally open (NO) or normally closed (NC) through the GV-CR1320 Web interface. The default value is **NO**. To change the input status, see *Input Setting*, Chapter 4, [GV-CR1320 Camera Reader User's Manual](#).

The table below shows the wire assignments of input connectors on GV-CR1320.

Wire color	Definition
Yellow	Input 1
Light Red	Input 2
Brown	Input COM

3.4 Connecting Output Devices

GV-CR1320 supports 1 type of output: Door outputs, e.g. electronic lock.

The table below shows the wire assignments of output connectors on GV-CR1320.

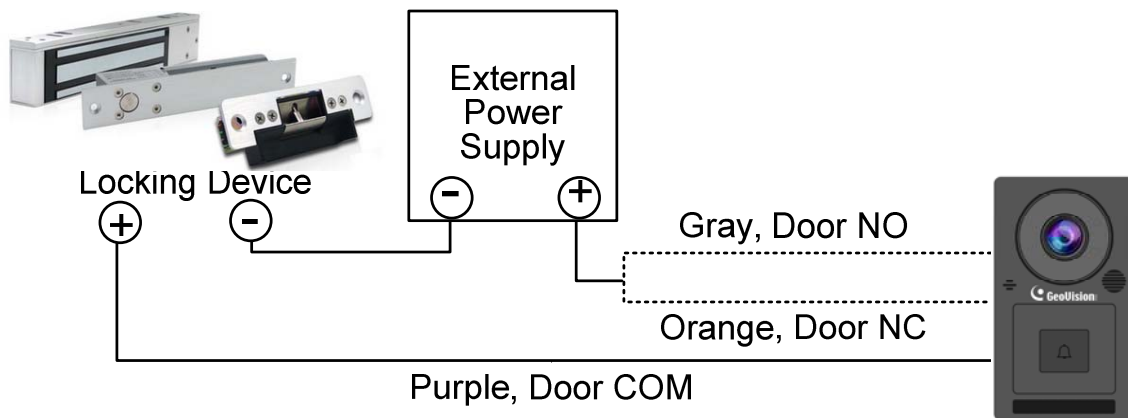
Wire color	Definition
Purple	Output COM
Orange	Output NC
Gray	Output NO

Check if your output device meets the following absolute maximum ratings before connecting it to the Door outputs.

Breakdown Voltage	250V AC, 220V DC
Continuous Load Current	1A (30V DC), 0.3A (125V AC)
<p>Note: Absolute Maximum Ratings are those values beyond which damage to GV-CR1320 circuit board may occur. Continuous operation of GV-CR1320 at the absolute rating level may affect GV-CR1320's reliability.</p>	

To connect an output device:

The example below illustrates the connection of a locking device to GV-CR1320. Connect the (+) point on the locking device to the Output COM wire on GV-CR1320, connect the two (-) points of the locking device and the external power supply together, and connect the (+) point on the external power supply to the Output NO or Output NC wire on GV-CR1320 based on the state of the locking device.



3.5 Powering on GV-CR1320

You can choose to supply power using a power or PoE adapter.

- When using a Power Adaptor, connect 12V and GND wires to a 12V, 3A power adapter and then connect the power adapter to a power source.

The table below shows the pin assignments of the power connectors on GV-CR1320.

Wire color	GV-CR1320 Definition
Red	12V DC
Black	GND

- When using PoE adapter, power is provided to the device through the Ethernet cable.


Note:

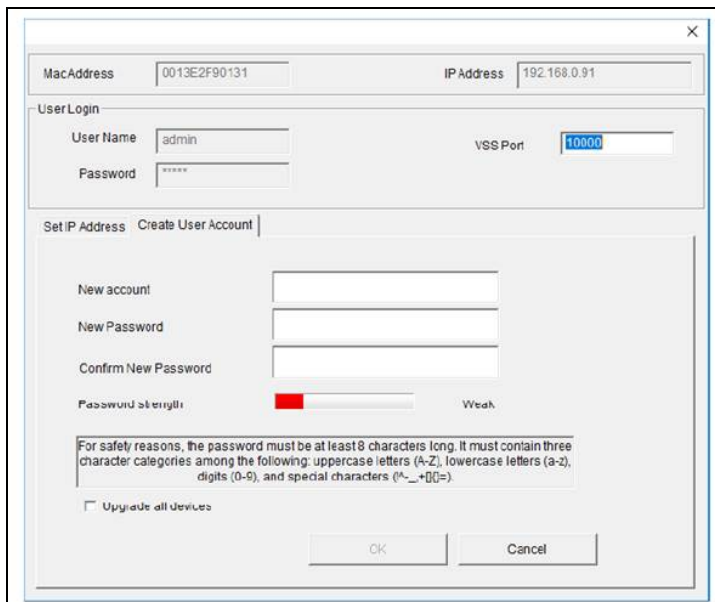
1. Power should only be applied to the unit when all connections are completed and tested.
2. GV-CR1320 produces an output voltage of 12V, thus an external power supply is required total power consumptions of connected input / output devices exceed 12V.

4. Accessing GV-CR1320

4.1 Creating Login Credentials

When purchasing a new GV-CR1320 or after loading default, you need to set up a login username and password for the GV-CR1320.

1. Download and install GV-IP Device Utility from our [website](#).
2. On the GV-IP Device Utility window, click  to search for your GV-CR1320.
3. Double-click your GV-CR1320 in the GV-IP Device Utility list. This dialog box appears.



The screenshot shows a dialog box titled "GV-IP Device Utility" with a close button (X) in the top right corner. At the top, there are two input fields: "MacAddress" with the value "0013E2F90131" and "IP Address" with the value "192.168.0.91". Below these is a "User Login" section with "User Name" set to "admin" and "VSS Port" set to "10000". The "Password" field is masked with asterisks. Below the "User Login" section are two tabs: "Set IP Address" and "Create User Account", with "Create User Account" being the active tab. Under the "Create User Account" tab, there are three input fields for "New account", "New Password", and "Confirm New Password". Below these is a "Password strength" indicator showing a red bar and the word "Weak". A text box below the strength indicator contains the following text: "For safety reasons, the password must be at least 8 characters long. It must contain three character categories among the following: uppercase letters (A-Z), lowercase letters (a-z), digits (0-9), and special characters (^_~+[]{}=)". At the bottom left, there is a checkbox labeled "Upgrade all devices" which is currently unchecked. At the bottom right, there are "OK" and "Cancel" buttons.

4. Click the **Create User Account** tab to type a new username and password. Note that the new password must meet the password strength requirements.
5. Optionally, click **Upgrade all devices** to use the same username and password on all other devices of the same model.

4.2 Web Browser

To access the functions and settings of GV-CR1320 on the Web interface, ensure your PC use one of the following web browsers.


Browser	<ul style="list-style-type: none">• Internet Explorer 9.x or later• Firefox• Google Chrome• Safari
----------------	---

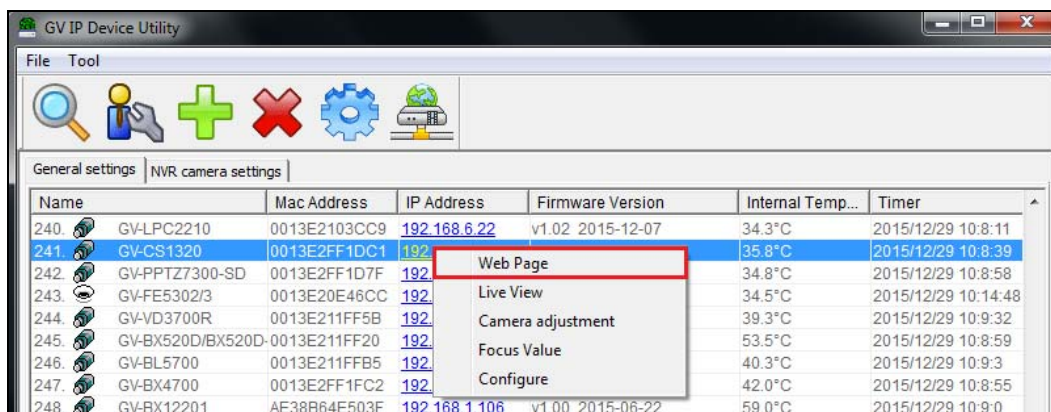
Note: For users of non-IE browsers, download **GV-Web Viewer** to access full functioning user interface. See *Accessing Your Surveillance Images*, Chapter 3, [GV-CR1320 Camera Reader User's Manual](#).

4.3 Checking the Dynamic IP Address

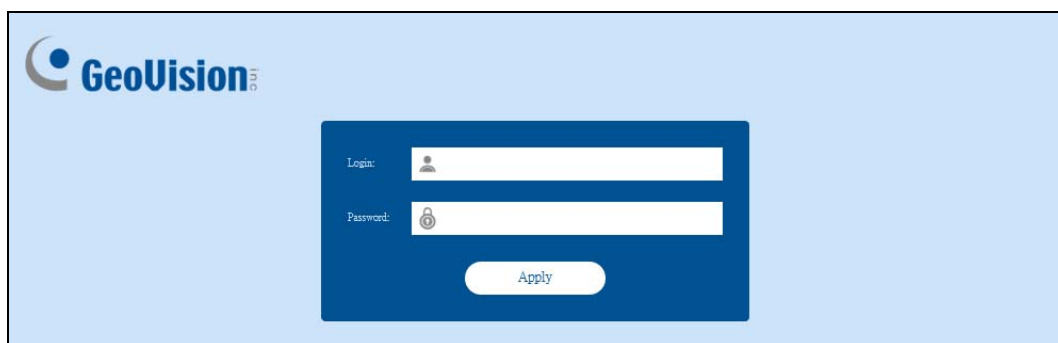
By default, when GV-CR1320 is connected to LAN with a DHCP server, it is automatically assigned with a dynamic IP address. Follow the steps below to look up its IP address.

Note: The PC installed with GV-IP Device Utility must be under the same LAN as GV-CR1320.

1. Install the GV-IP Device Utility program from our [website](#).
2. On the GV-IP Utility window, click the  button to search for the IP devices connected in the same LAN. Click the **Name** or **Mac Address** column to sort.
3. Click on the IP address of **GV-CR1320** and select **Web Page**.



4. The login page appears.



5. Type your username and password to login.

4.4 Assigning an IP Address

When GV-CR1320 is connected to LAN without a DHCP server, it is assigned with the default IP address of **192.168.0.10**.

Follow the steps below to assign a new IP address to avoid IP conflict with other GeoVision devices.

Note: If your router supports the DHCP server, GV-CR1320 will obtain a dynamic IP address from the DHCP server each time it connects to the LAN, instead of using 192.168.0.10.

1. Open your web browser, and type the default IP address <http://192.168.0.10>
2. In both Login and Password fields, type your username and password. Click **Apply**.
3. In the left menu, select **Network > LAN**.

LAN Configuration

In this section you can configure GV-IPCAM to work inside of LAN.

LAN Configuration

Dynamic IP address Select this option to obtain IP address from a DHCP server Test DHCP

Static IP address Select this option to enter a Static IP address manually

IP Address:

Subnet Mask:

Router/Gateway:

Primary DNS:

Secondary DNS: (Optional)

PPPoE Select this option to establish a DSL connection

Username:

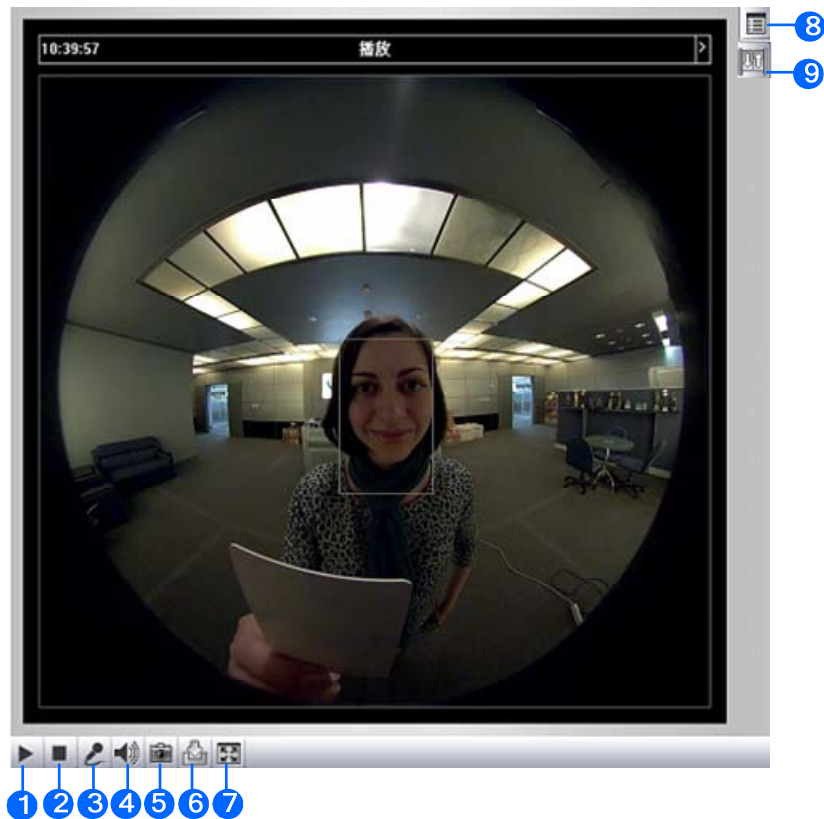
Password:

4. Select **Static IP address**. Type the IP Address, Subnet Mask, Router/Gateway, Primary DNS and Secondary DNS.
5. Click **Apply**. GV-CR1320 is now accessible by entering the assigned IP address on the web browser.

IMPORTANT:

1. If **Dynamic IP Address** or **PPPoE** is enabled, you need to know which IP address the camera reader will get from the DHCP server or ISP to log in. If your camera reader is installed in a LAN, use the GV-IP Device Utility to look up its current dynamic address. See *4.2 Checking the Dynamic IP Address*.
If your GV-CR1320 uses a public dynamic IP address, via PPPoE, use the Dynamic DNS service to obtain a domain name linked to the camera reader's changing IP address first. For details on Dynamic DNS Server settings, see *Advanced TCP/IP*, Chapter 4, [GV-CR1320 Camera Reader User's Manual](#).
 2. If **Dynamic IP Address** and **PPPoE** is enabled and you cannot access the unit, you may have to reset it to the factory default settings and perform the network settings again. Refer to section 7 to see how to restore to factory default settings.
-

5. The Web Interface



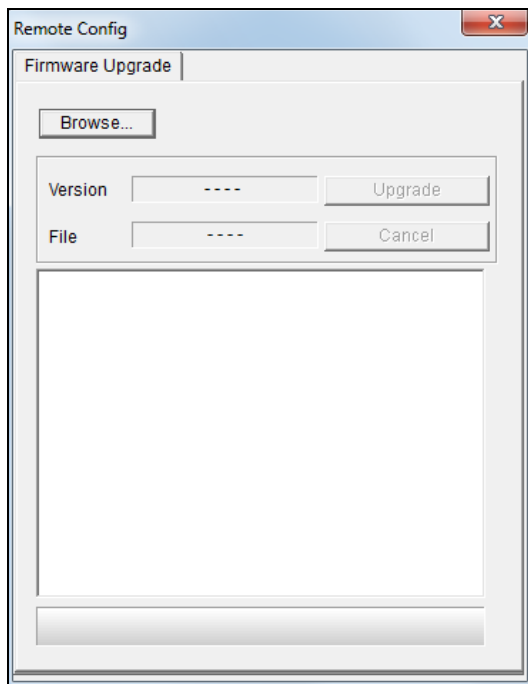
No.	Name	Function
1	Play	Plays live video.
2	Stop	Stops playing video.
3	Microphone	Talks to the surveillance area from the local computer.
4	Speaker	Listens to the audio around GV-CR1320.
5	Snapshot	Takes a snapshot of live video.
6	File Save	Records live video to the local computer.
7	Full Screen	Switches to full screen view. Right-click the image to have these options: Snapshot, Full Screen, Digital PTZ, Wide Angle Lens Dewarping, Wide Angle Setting, Fisheye Setting, PIP and PAP.
8	Show System Menu	Brings up these functions: Video and Audio Configuration, Remote Config, Show Camera Name and Image Enhance.
9	I/O Control	Enables the I/O Control and Visual Automation Panel.

For details, see Chapter 3, [GV-CR1320 Camera Reader User's Manual](#).

6. Upgrading System Firmware

GeoVision periodically releases the updated firmware on the website. To load the new firmware into the GV-CR1320, follow the instructions below.

1. In the Live View window, click the **Show System Menu** button and select **Remote Config**. This dialog box appears.



2. Click the **Browse** button to locate the firmware file (.img) saved at your local computer.
3. Click the **Upgrade** button to process the upgrade.

7. Restoring to Factory Default

If for any reason the device is not responding properly, you can reset it to its factory default settings either directly on the device or through its Web interface.

7.1 Using the Web Interface

1. In the left menu, select **Management** and select **Tools**.
2. Under the **System Settings** section, click the **Load Default** button.

7.2 Directly on the Camera

1. Unplug the power cable.
2. Use a point object such as the tip of a pen to hold down the **Load default** button while plugging the power cable.



3. Wait until the status LED blinks twice to release the **Load default** button. The process takes about 5 seconds.