

TS-20 Tamper/Plunger Switch Series



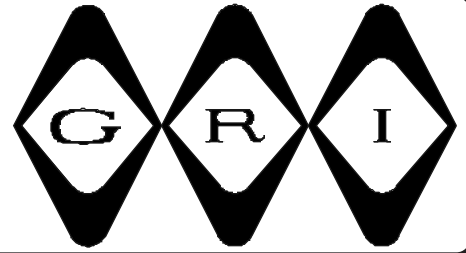
TS-20
Tamper Switch



TSC-20
Tamper Switch

- Lifetime Warranty
- UL and ULC Approved
- Available in Closed Loop, Open Loop and SPDT
- Reed Switch Hermetically Sealed
- Adjustable Plunger from 1/4" to 1/2"
- Supervisory Loops Available
- 3/8" Diameter (Smallest in the Industry)
- Standard 12" Leads
- Longer Leads Upon Request
- Easy To Install
- Replaces Old Mechanical Tamperers
- Strong Spring Action
- Flanges for Reliable, Positive Retention

TAMPER SWITCH



TS-20 SERIES

- ◆ Recessed Adjustable Plunger (From 1/4" to 1/2")
- ◆ 3/8" Diameter (Smallest In The Industry)
- ◆ Easy To Install - Replaces Old Mechanical Tampers
- ◆ Strong Spring Action ◆ Press To Fit ◆ 12" #22AWG Leads
- ◆ Screw Down Flange on TS-20 For Positive Retention
- ◆ Longer Leads, Zip Cord or Jacketed Cable Upon Request
- ◆ Hermetically Sealed ◆ Plated Contacts Resist Sticking or Freezing
- ◆ Mounting Hardware Included ◆ Supervisory Loops Upon Request
- ◆ Lifetime Warranty



TS-20
3/8" Drill Mount



TSC-20
Clip Mounting

PART NUMBERS:		Closed Loop	Open Loop	SPDT
Reed Plunger		TS-20	TS-30	TS-40
Screw Down Flange				
Reed Plunger		TSC-20	TSC-30	TSC-40
Clip Mounted				
Travel:	Total	.250		
	Pre Travel	.105 ± .035		

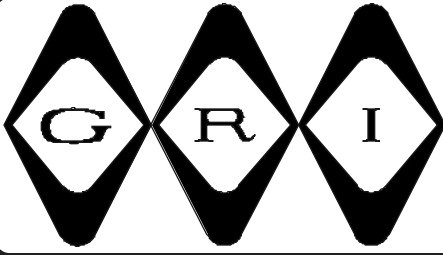
GEORGERISK INDUSTRIES, INC.
GRI PLAZA
KIMBALL, NE 69145



MADE IN U.S.A.

TOLL-FREE 1-800-445-5218
TOLL-FREE 1-800-523-1227
(308) 235-4645

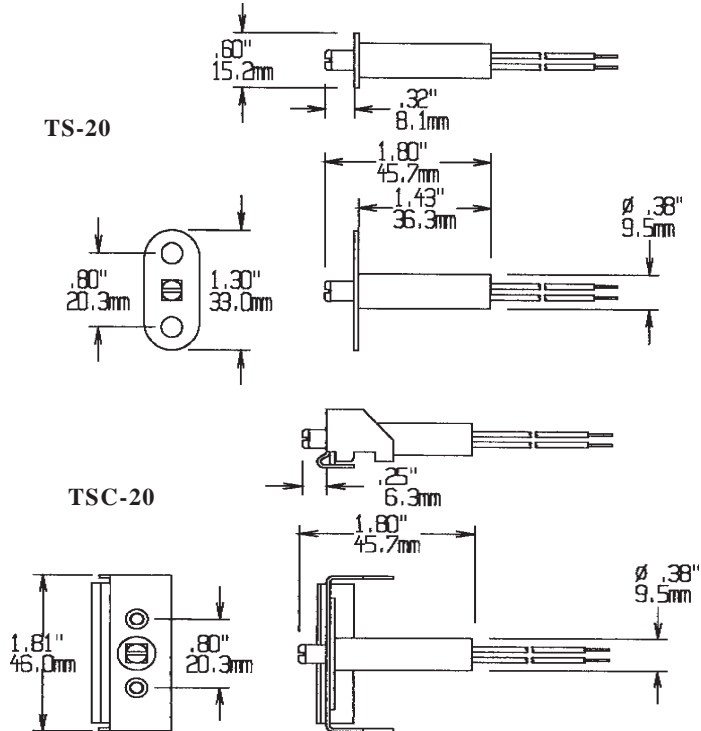
FAX (308) 235-3561
E-MAIL: grisales@megavision.com
WEB SITE: www.grisk.com



TAMPER SWITCH

INSTALLATION APPLICATIONS:

The adjustable plunger actuated TS series was developed to provide a tamper switch with a smaller diameter for applications where a normal plunger or roller ball type switch is too large. The 3/8" diameter is ideal for a variety of door and window applications. The oval flange allows the switch to be solidly anchored where needed. The design also resists locking problems caused by expansion or contraction. Available with a bracket for box tamper. Made of nylon for flexibility, the stainless steel spring and sealed contact insure a long service life.



GRI products meet or exceed these minimum general specifications:

PART NUMBER	LOOP TYPE	ELECTRICAL CONFIG.	REED FORM	MAXIMUM INITIAL CONTACT RESISTANCE (Ω)	MAXIMUM CONTACT RATING (W)	MAXIMUM SWITCHING VOLTAGE (VDC)	MAXIMUM SWITCHING CURRENT (A)
TS-20	Closed	N/O	A	.115	10	200	.500
TSC-20	Closed	N/O	A	.115	10	200	.500
TS-30	Open	N/C	B	.140	5	175VDC	.250
TSC-30	Open	N/C	B	.140	5	175VDC	.250
TS-40	Open/Closed	SPDT	C	.140	5	175VDC	.250
TSC-40	Open/Closed	SPDT	C	.140	5	175VDC	.250

WARRANTY:

Lifetime warranty against workmanship, material and factory defects.

CONTACT YOUR G.R.I. DISTRIBUTOR OR CALL:

GEORGERISK INDUSTRIES, INC.
GRI PLAZA
KIMBALL, NE 69145



MADE IN U.S.A.

TOLL-FREE 1-800-445-5218
TOLL-FREE 1-800-523-1227
(308) 235-4645

FAX (308) 235-3561

E-MAIL: grisales@megavision.com

WEB SITE: www.grisk.com