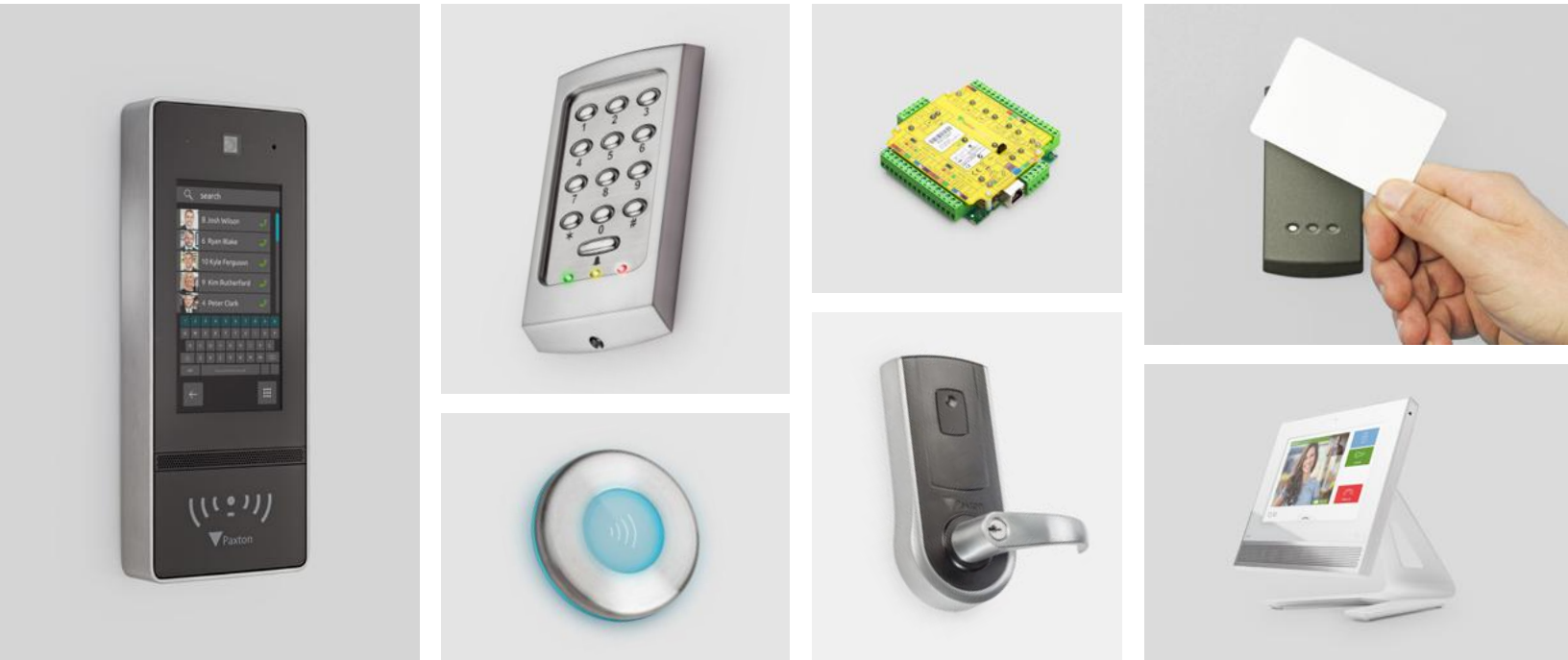




Net2 Installer Guide



Why work with us?



Easy to quote

- Build your system one door at a time
- A range of products to suit any site requirement
- Scalable system – add doors when the budget is available



Easy to install

- Plug and play solutions that connect directly to the network
- Mix and match Net2 products – they are all designed to work together seamlessly
- Clear instructions and colour coded wiring labels



Easy to work with

- Industry-leading technical support
- 5-year guarantee and three step returns policy
- Free software upgrades and no multiple licence fees



The Paxton Installer App



Paxton in Your Pocket – the Ultimate Installer Tool

The new Paxton Installer app gives you instant access to all the tools you need to install Paxton products. The free app, available for iOS and Android, provides quick and easy access to product specs and technical information, plus anything you could need on-site!



**Superfast access to
product information**



**Get answers to
your FAQs**



**Be the first to hear
Paxton news**



**Find your
distributors**



**Dial direct to Paxton
Technical Support**



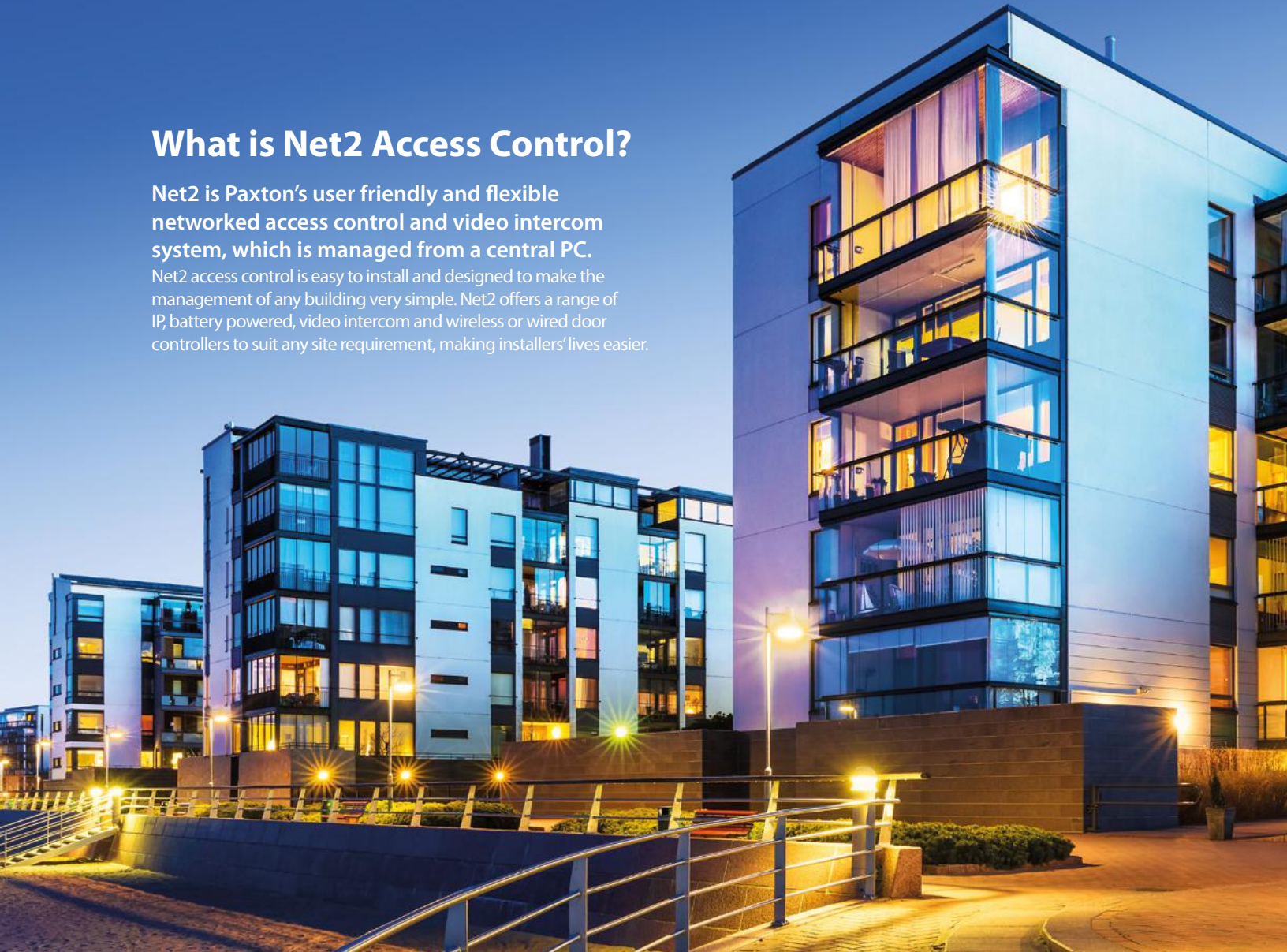
Contents

What is Net2 Access Control?	3
How Does Net2 Work?	4
Net2 Software	5
Net2 Software Features	6
Net2 Hardware	8
Net2 PaxLock	9
PaxLock Pro - Mortise & Latch	10
Video Intercom	12
Video Intercom Components	13
Video Intercom System	14
Readers and Keypads	15
Net2 Integrations	16
Net2 Case Studies	18
Additional Information	20

What is Net2 Access Control?

Net2 is Paxton's user friendly and flexible networked access control and video intercom system, which is managed from a central PC.

Net2 access control is easy to install and designed to make the management of any building very simple. Net2 offers a range of IP, battery powered, video intercom and wireless or wired door controllers to suit any site requirement, making installers' lives easier.



Wired Access Control

Our networked access control system, Net2, is administered using one or more PCs and can be monitored and managed from a central location.



Wireless Access Control

Net2 PaxLock is a wireless networked access control solution in a door handle. It communicates wirelessly to the server PC via a Net2Air bridge, reducing cabling and installation time.



Video Intercom

Entry is our straightforward video intercom system that works standalone or when used alongside Net2 access control. Entry can be used to allow day-to-day access for users who have an RFID token, PIN or code.

How Does Net2 Work?

Networked Access Control

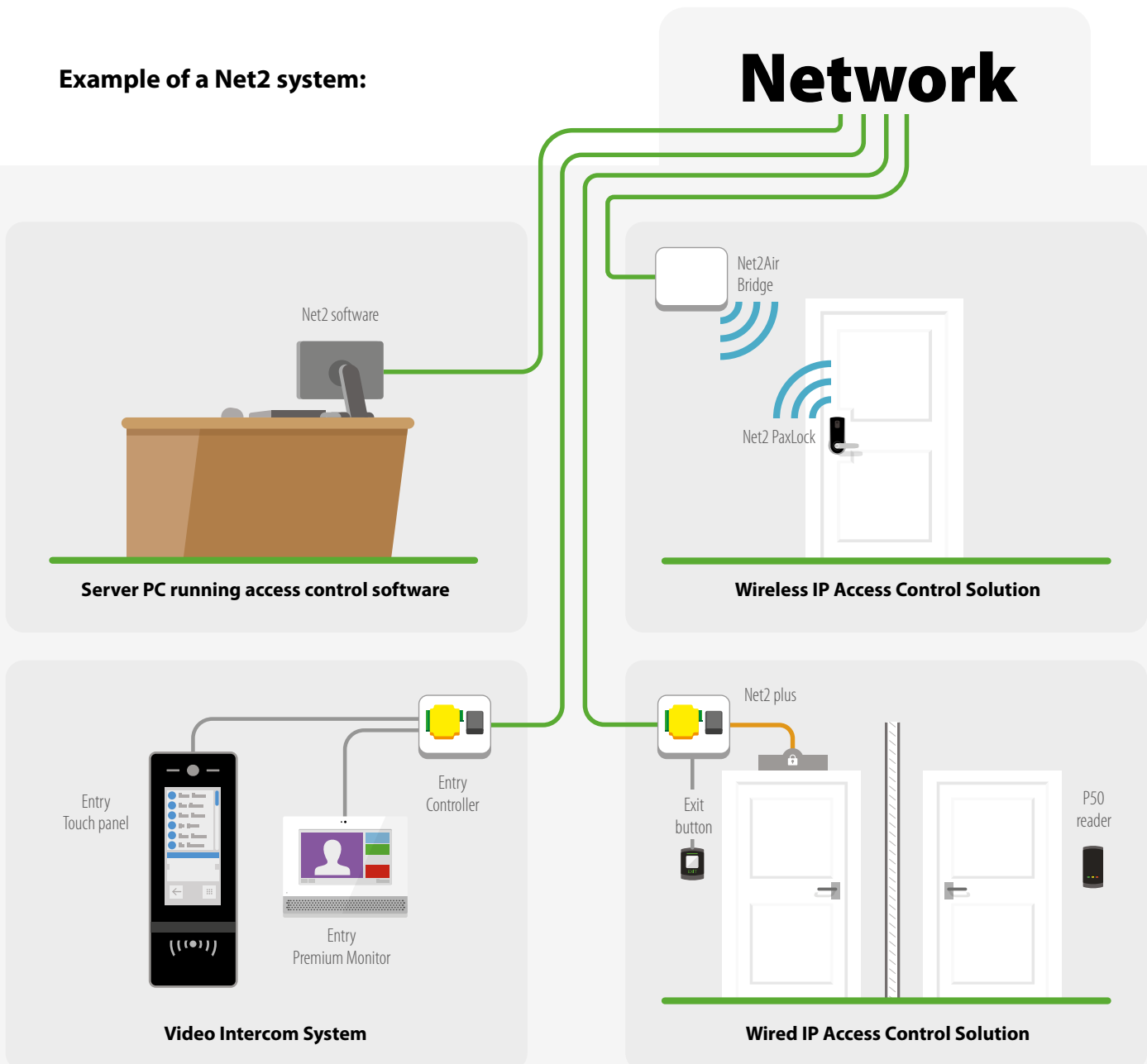
Our networked access control system, Net2, is administered using one or more PCs and can be monitored and managed from a central location. Our door controllers come as wired, wireless or battery powered.

Net2 is designed with simplicity in mind and is easily scalable. Paxton's one door controller philosophy means you only quote for doors that require access. You can build your Net2 system one door at a time using wired and wireless controllers and video intercom for versatile security and building management.

Benefits of the Net2 system:

- Modular approach for simplicity and scalability
- Simple intuitive software
- Range of features that move beyond basic access control
- A complete solution that encompasses wireless and video intercom

Example of a Net2 system:



Software Overview

There are two versions of the software: Net2 Lite, which is ideal for most sites and is free of charge, and Net2 Pro, which offers extra features for more flexible and advanced access control as well as a number of new features to help keep sites COVID-secure. Developed to be straightforward and intuitive, the Net2 software is easy to learn.



Feature	Net2 Lite	Net2 Pro
Multiple clients	•	•
Free upgrades	•	•
CCTV integration	•	•
Site graphics	•	•
Triggers and actions	•	•
Intruder alarm integration*	•	•
Entry compatible	•	•
Biometric integration	•	•
Timesheet & Timeline*	•	•
Card designer	•	•
Landlord Tenant	-	•
Roll call and muster reporting*	-	•
Fire alarm integration*	-	•
Anti-passback*	-	•
Security lockdown*	-	•
Multi-zone intruder alarm integration*	-	•
Custom days*	-	•
Areas	-	•
Customizable welcome page	-	•
Paxton Connect app**	-	•
Net2Online***	-	•
Checkpoint Control	-	•
Occupancy Management	-	•

NEW Net2Online and Paxton Connect

Site management made easy

Easy access to your Net2 system wherever you are – any location, any device. Flexible site management via a browser with Net2Online and from the Paxton Connect app.

Features include:

- ▶ User admin
- ▶ Managing roll call reports
- ▶ Open door functionality
- ▶ Viewing reports and events
- ▶ Free with Net2 Pro

Download now:



Find out more: paxton.info/4012



* Not available with wireless products

** Paxton Connect app only works with Net2 Pro v6.00 or above

*** Net2Online only works with Net2 Pro v6.01 or above

Net2 Software Features

Software Features

Tailor access privileges to groups or individuals quickly and easily using our intuitive, user-friendly software. Event reports can be generated in a few clicks and the advanced features such as site graphics, IP camera integration and triggers and actions further extend the capabilities of the system.

COMPATIBILITY

Net2 software is compatible with Windows 8, Windows 7, Windows 10 or Vista operating systems and is designed to feel familiar to any Windows user.



Free upgrades

Software upgrades are always free of charge, allowing system users to benefit from new features as they become available



Unlimited client workstations

Net2 software does not restrict the number of operators who can have access and it can be installed free of charge on multiple PCs



Multiple operator levels

An unlimited number of people can administer the system with different levels of security applied



Live events

View events in real time.

Full event logging - review historical events.



Reporting

Pre-defined reports allow you to review the most relevant data quickly

Build custom reports based on individuals, departments or doors



Open door function

Utilize the software to open individual doors or groups of doors from a client workstation



Site graphics

Import 2D images of your site to give a graphical view of door open or alarm status for operators or security personnel



Triggers & actions

Administrators can easily create rules based on system events. These include sending emails and SMS, controlling doors and relays in response to access events or alarms



User image verification

This enables the system administrator to visually confirm the identity of the user



Custom days

Custom days offers organizations flexibility allowing users to create a time period in the Net2 software for special events and occasions. This is useful when organizing events such as school open days, or extended store opening hours



Temporary access rights

Temporary access permissions can be used to automatically upgrade or downgrade a user's access permissions for a set period of time



Turnstile mode

Control bi-directional turnstiles with a single door controller saving wiring time and hardware expense





Timesheet & timeline

By allocating specific proximity readers for clocking in and out you can use Net2 to log the working hours of employees. You can also note periods of time out of the office for reasons such as vacation, appointments and unpaid leave, etc. Reports can also be exported for use with HR applications



Card designer

Personalize access control tokens with employee pictures, details and company information



PRO Landlord Tenant / Advanced operator permissions

Operators using Net2 software can be managed in various ways to limit access and enhance security. With Landlord Tenant / Advanced operator permissions it is possible to restrict operators to only administer users within certain departments and apply specific access level permissions to those users



PRO Roll call & muster reporting

Roll call allows the system administrator to obtain a report listing all users currently within a specified area. This is primarily used in the event of an emergency, such as a fire alarm, when it can be used to check that everyone is out of the building



PRO Occupancy Management

Control and monitor social distancing with Occupancy Management. Quickly and easily manage the flow of people around your building to control the maximum number of people in any given area. Real-time visual reports make it easy to see when an area is nearing, or reaches, capacity.



PRO Areas

Areas and area groups make it easier to set up access levels on larger sites by grouping multiple doors into a single access controlled area. It also allows the use of advanced features such as anti-passback



PRO Anti-passback

The main purpose of an anti-passback system is to prevent a user from passing their token back to a second person to gain entry into the same controlled area; for example, a car park



PRO Who is in?

Displays the last known location of a user based on the last reader they presented a token to



PRO Security lockdown

Security lockdown is ideal for buildings or sensitive sites that need to secure the premises in the event of an emergency, allowing only specific security personnel free movement during lockdown



PRO Customizable welcome page

Installers can customize the welcome screen of every Net2 system they install or maintain with their logo and contact details. This ensures that the customer knows who to contact if they need support



PRO Checkpoint Control

Create checkpoints within a building where staff or visitors must be validated before they can access other areas, helping to follow health and safety guidelines and protect user well-being. Manually validate staff and visitors with in-person checkpoints or use a dedicated reader to validate people automatically.



SOFTWARE DEMONSTRATIONS

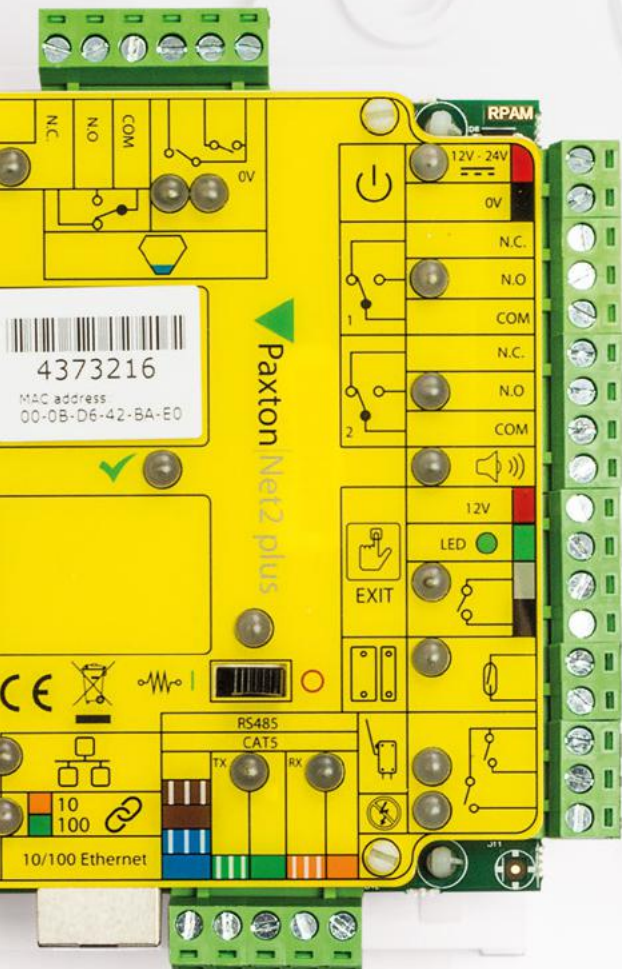
Watch our tutorial videos and learn how you can get the very best from the Net2 software and offer your customers more from their access control system.

Watch our videos here:
<http://paxton.info/3234>

PRO - features only available in Net2 Pro software

Door Controllers

All Net2 door controllers can be used alongside each other, making it easy for installers to find the best solution for each individual site.



Net2 nano door controller

Net2 nano is a wireless door controller, using secure wireless technology to communicate to the server PC.

- Communicates using Net2Air technology, Paxton's secure and reliable wireless protocol
- Minimal wiring needed
- Easy installation and configuration



Net2 plus door controller

Net2 plus is Paxton's most powerful door controller, which uses TCP/IP technology to allow direct connection to the IP network, saving time with minimal wiring needed.

- Use existing LAN or RS485 infrastructure on a site
- Easy installation with minimal wiring
- Future proof and easily scalable
- Create more site opportunities



Net2 plus door controller with PoE

Power over Ethernet (PoE) is a technology that allows both power and data to be streamed along the same Ethernet cable. Net2 plus with PoE as a power source makes installations quick and easy.

- Enjoy all the benefits of Net2 plus, with a single cable for power and data
- Choose to use mains or PoE
- Installation is more efficient and convenient
- Save time and money on extra cabling



Net2 plus door controller with trigger disconnect

The trigger disconnect power supply is a power supply/charger that has two protected outputs that can be set for 12VDC or 24 VDC. It is intended for use in applications that require UL listed interface with fire alarm control panels.

- Fire alarm control panel or access control trigger input
- Relay output for activating other devices
- 2 power limited, protected outputs (12VDC or 24VDC)
 - Fail safe/fail secure switched lock output
 - Auxiliary unswitched power output



Net2 PaxLock

Net2 PaxLock will save you time and money on site. It can be installed quickly and comes pre-fit with a C keyway core, which is also available to fit SFIC keyway. The battery powered unit comprises a networked access control system in a door handle, combining secure wireless technology with a stylish proximity reader.



Features of Net2 PaxLock

Net2 PaxLock communicates with the Net2 software at a central point by a secure, low power radio link, and events are reported back to the server in real-time. It is designed for use with Net2Air Bridges to give the advantages of a wireless networked access control system. Each Net2Air Bridge can detect Net2 PaxLock units within an average wireless radius range of up to 50ft (15m).

- No separate power supply needed
- No cabling to the door
- Minimal installation time
- ANSI Grade 1
- Reduced labor costs
- Ideal for retrofit installation
- UL-10C rated
- Contains Genuine HID Technology™

1 HID™ activation license required
The Genuine HID Technology logo is a trademark of HID Global Corporation/ASSA ABLOY AB.
Used with permission.



No separate power supply needed



No wiring necessary



Token options



Available with key override



AA battery operated



NEW PRODUCT

PaxLock Pro - Latch

PaxLock Pro – Latch is a wireless door handle with a universal design that provides a quick, simple and convenient way to secure an internal door. The door handle’s smart and compact appearance means it can be used in more applications than ever before. PaxLock Pro - Latch includes a tubular latch that can replace an existing cylindrical lockset or be installed as part of a new door installation.

- Standalone/Networked wireless access control
- Simple upgrade path from standalone to networked
- Dual-frequency proximity reader - Paxton, MIFARE®, EM, HID®Prox
- Communicates using Net2Air technology
- UL294 Certified
- FCC part 15 & ISED certified
- Compatible with standard cylindrical doors using tubular latch



Standalone or networked

UL294

Rated for reliability

FCC

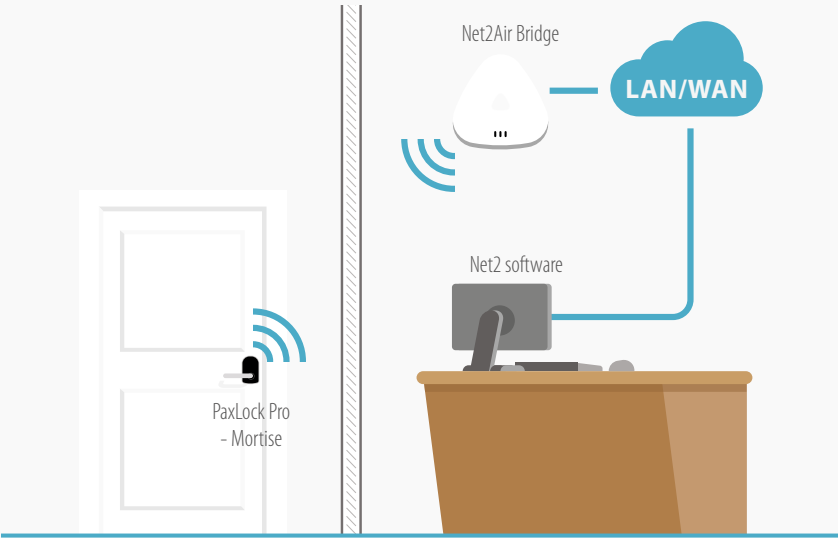
Part 15 certified

YALE

Yale lock cases available



5 Year warranty



COMING SOON

PaxLock Pro - Mortise

Available colors: White Black

Two handle options available - Galaxy & Eclipse

PaxLock Pro - Latch - for internal use

PaxLock Pro - Mortise - for external facing doors

UPDATED

Net2Air Bridge

The Net2Air Bridge communicates between the Net2 PC and wireless control units. It has a low profile which can be wall or ceiling mounted for a quick and simple installation.



No separate power supply needed



No wiring necessary



Token options



Available with key override



AA battery operated

*PaxLock Pro - Mortise only

Entry

Entry is our straightforward video intercom system that works standalone or when used alongside Net2 access control, Entry can be used to allow day-to-day access for users who have a token, PIN or code. Entry allows a person inside a building to identify a visitor via a video or audio monitor before they decide whether to grant or deny entry via the external door.

The versatile grouping feature enables smart management of multi-tenant buildings and sites with fenced perimeters. The intuitive panel allows you to set up the display to show occupants by name, for straightforward building management. The system is a highly scalable solution, allowing expansion of up to 100 panels and 1000 monitors.

Quick and Easy installation



- Just 3 components that auto detect on setup – monitor, panel and control unit
- Scalable system – expands using a standard PoE extension switch
- No need for specialist wiring diagrams
- 3 monitor options - premium, standard and audio options available
- Multiple panel options – flush mount, surface mount and surface mount with rain hood
- Secondary camera integration for extra security
- SIP compatibility - the door can be answered from smartphone, tablet or PC

NEW Entry Standard Monitor

The latest addition to our video intercom range.

Introducing the next generation standard monitor, a versatile door entry monitor that offers a feature rich and cost-effective solution for a range of applications. Fully compatible with Net2, as well as part of a standalone video intercom solution, the new Entry Standard monitor is the ideal choice for any building.

- Excellent audio quality, full-duplex voice communication and easy read, high contrast screen
- Personalized experience with 14 theme designs. Premium user interface with call and event log
- Action buttons, call snapshot and compatibility with concierge management*
- Available with or without a handset. Universal wall or desk mounting
- Quick and easy installation, providing a true plug and play solution



*When used with the Entry Premium monitor. The standard monitor cannot function as the concierge monitor.

Entry panels

Entry Standard panel *

The anthracite grey standard panel suits a range of environments with its simple and IK08 rated robust design.



Entry monitors

NEW

Entry Standard monitor

The next generation of our standard monitor. Smart, sleek design with an enhanced user experience. More features, new look, better price.



Entry Vandal Resistant panel *

IK10 impact rated - made from marine grade stainless steel to meet the most demanding environments.



Entry Audio monitor

Cost-effective monitor fully supporting all system functionality, where video is not required. Action buttons configurable for a range of requirements, like activating an intruder alarm or switching on external lights.



Entry Touch panel *

Capacitive 7-inch color touch screen with customizable options and two way camera when used with the Entry Premium monitor.



Entry Premium monitor

Free concierge management and several personalization options available with built in themes.



* Indicates readers that have functionality to read HID™ 125kHz Proximity when enabled using Genuine HID Technology™ 125kHz. Proximity activation license cards sold separately.

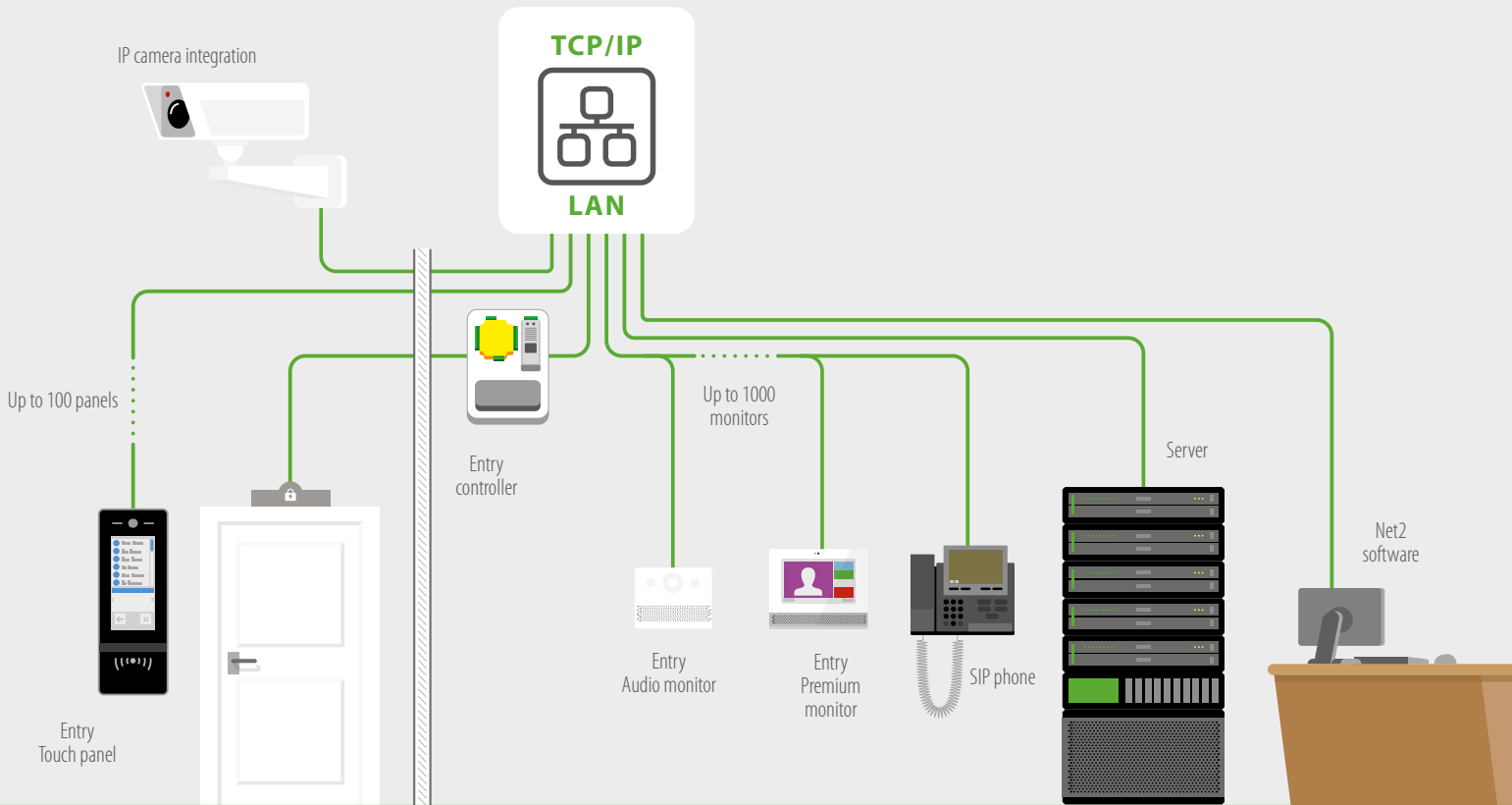


Entry controller

Conduit between the monitor and the panel in the system.



Video Intercom System



A Simple One Door Solution

Easy to extend via an IP network

- Additional components auto detect when connected, with IPv6 technology
- SIP compatibility – the door can be answered from smartphone, tablet or PC*

Smart, simple user experience

- Intelligent panel design displays occupants by name or if using the touch panel add an image or logo for quick visual recognition in the dynamic address book
- Multiple theme options to personalize the touch panel, standard monitor and premium monitor
- Intuitive user interface for secondary ONVIF compliant camera integration
- Simple visitor verification, with or without video
- Free concierge management, including broadcast messaging available with the premium monitor at no extra cost
- Hi-contrast themes available with the premium and standard monitors and touch panel



INTRODUCTION TO ENTRY
Watch it here:
<http://paxton.info/3143>

Advanced Features of the Entry System

Entry has a range of features, advanced functionality and intuitive user interface to make it suitable for a wide range of sites allowing you to offer your customers the ultimate security solution.

Versatile building management

- Grouping feature enables smarter management of multi-tenant buildings and sites with fenced perimeters
- Complete product portfolio with premium, standard, audio and vandal resistant options available
- Pan/tilt camera functionality to capture an angled view, for a diverse range of locations

Suitable for a wide range of sites

- Multi-format reader – reads Paxton and MIFARE® token technology
- The standard panel features a high contrast backlit keypad
- The audio monitor fully supports all system functionality, where video is not required
- Two-way video available between the premium monitor and touch panel
- Line-out for T-Loop antenna built into the touch panel and premium and standard monitors for users with hearing aids

* 3rd party app required

Readers and Keypads

Due to the wide range of site requirements, we offer a variety of readers and keypads suitable for use with Net2. This includes readers and keypads with vandal resistant, energy saving and long range capabilities.

See the full range on our website:

We have a range of keypads and readers to suit many sites and requirements.

► **Use this link to see more:**
paxton.info/3235

P series

The P series range of readers is Paxton's most popular and comprises four readers ranging in size from the P38 to the P200. A P50 fits neatly onto a door frame while the size of the P200 creates a longer token read range. All P series readers are supplied with two fascias, one black and one white. We supply free fascia replacements to keep your sites looking smart.



Long range reader

The Long range reader is designed for hands free access, its read range of 5m means that the token can be detected from within a vehicle, for car parks, barriers and wheel chair user access.



Energy saving reader

The Energy saving reader is used to ensure that electrical equipment is only switched on when an authorized user card is inserted and retained, ideal for energy saving and safety.



Marine reader

The Marine reader is made of marine grade stainless steel and is built to withstand the elements as well as look stylish.



Paxton reader range with Genuine HID Technology™

The Paxton reader range with Genuine HID Technology™ is a smart collection of readers. The multi-format readers can be configured to read standard 125kHz HID™ cards; ideal for large sites wanting to use existing cards for their Net2 access control systems. HID™ Wiegand output is optional with a separate purchase of a Wiegand activation card. For a list of our readers with Genuine HID Technology™, see our website.

See the full range on our website:

► <http://paxton.info/3233>



Integrations

Net2 software is designed to easily integrate with other security systems, so you can offer your customers a complete solution. By integrating with other security systems your customers can enjoy more streamlined security for their building

BESPOKE INTEGRATIONS



The Paxton Software Development Kit (SDK) is free to download for C# developers with no NDA to sign, and is supported via a dedicated software development forum.



Intruder alarm

- Save time by integrating Net2 with your intruder alarm and reduce false alarms.
- Control your intruder and access systems as one, across different areas of the building.



Fire alarm

- Integrate Net2 with your fire alarm and program your system to automatically open fire doors in the event of an emergency to improve safety.



CCTV

- Streamline your Net2 system with CCTV for a quick, efficient way to view footage linked to specific access events or doors.
- Review CCTV footage from within your Net2 system.



Roll call and muster

- Set your system to generate an automatic roll call report when the fire alarm goes off. This helps to identify exactly who is safe once the building has been evacuated.



Biometrics

- Net2 integrates with leading biometric readers, allowing enrolment of biometric data within Net2.
- Open up new market opportunities from high security sites by offering biometric integration with Net2 access control.



Paxton Approved Integrations

Intruder Integration

(built into Net2)

Texecom
Designed to Perform

Club Management

Jonas
Club Software

Time and Attendance

Thinking Software
Staff Planning Time & Attendance

Biometrics

bioconnect.

Genie
CCTV

ievo
RELIABLE IDENTIFICATION SOLUTIONS

ViRDI

INVIXIUM
ACCESS



IDEMIA
augmented identity

PSIM

(Physical Security Information Management)

advancis

NAUTA
multifunctionalPSIM

ela soft

RISCO
GROUP

immix
by SureView systems

axxon
Experience The Next!

Key Management

traka
ASSA ABLOY

CCTV Integration

(built into Net2)

milestone

ahua **IDIS**
TECHNOLOGY

exacq
From Tyco Security Products

HIKVISION

PELCO
by Schneider Electric

IC REALTIME
Security Solutions

DW DIGITAL WATCHDOG
Complete Surveillance Solutions

Visitor Management

DigitalForge

HID intreba

SkyVisitor

Active Directory

INTOACCESS
THE INTEGRATORS

NAUTA
multifunctionalPSIM

Video Management

milestone

nuuo
Global Video Management

3S

icatcher
ip cctv security & surveillance

CATHEXIS

ACTI
Connecting Vision

avigilon
a Motorola Solutions Company

IndigoVision

MIRASYS

wavestore
Innovation with integrity

QVIS
LABS

SeeTec
An OnSSI Company

OEM Bespoke Products

Cortech Developments

DigitalForge

LifeSafetyPower

Roll Call & Mustering

Thinking Software
Staff Planning Time & Attendance

For more information visit <http://paxton.info/3202>

Net2 Case Studies

The Net2 system can be adapted to meet a range of diverse requirements for you and your customers. We have a range of case study examples covering many different sectors.

See our latest case studies here:
<http://paxton.info/3204>

Who is using Net2?

Here are just a few organizations who are using Net2 on their sites:

- Michelin
- Manchester United
- Porsche
- DHL
- Foyles
- Graze
- Ingram Micro
- and more...



Do you have a case study?

A case study can be a fantastic tool to help your customers see the benefit of having access control or video intercom on their site and help you to secure more business in the future.

If you're interested in working with us on a case study, you can get in touch with the Marketing Communications team at marketing@paxton-access.com



CORMETECH

Charlotte, NC, & Kings Mountain, NC, USA

CORMETECH develop environmental catalysts and technologies that reduce emissions from industrial processes. They required an updated access control solution to manage their multi-site facility from a single user database, to provide a more substantial infrastructure on one centrally managed system.

Type of site:

Manufacturing/Commercial

Number of doors:

- 2 sites
- 58 doors

Solution required:

- Improved and upgraded access control system
- Centrally managed
- Scalable, multi-site solution

Paxton products used:

- Net2 Pro Software
- Net2 Plus Controllers
- Net2 IO Boards
- KP75 Proximity Keypads
- P38 Proximity Readers with Genuine HID Technology™
- Entry VR Panels
- Entry Monitors

Integration:

-

Result:

- Flexible, scalable system with significant growth opportunity
- Simple access management
- Tailored access rights for users and areas



Park Terrace Condo Association

Downtown San Diego, CA, USA

Park Terrace Condo in downtown San Diego is conveniently located across from Petco Park, home of the San Diego Padres. The beautiful condo features two towers, 14 stories and houses 223 units. Park Terrace now uses Paxton's access control to provide a secure community for their tenants.

Type of site:

Residential

Number of doors:

- 223 condos
- 27 doors
- 2 buildings

Solution required:

- Manage and control access to the building
- Increase security for tenants
- Update and improve existing access control system

Paxton products used:

- Net2 Plus Controllers
- Net2 Software

Integration:

-

Result:

- Ease of running reports
- Ability to identify incidents simply in Net2 software
- Granting and denying access



Wesleyan School

Atlanta, GA, USA

Founded in 1963, Wesleyan School is located on 85 acres of land in Peachtree Corners, Georgia, just north of Atlanta. The school is comprised of nine main buildings including a chapel, two libraries, and two dining halls. There are 1,129 children and 200 faculty staff on site.

Type of site:

Education/School

Number of doors:

- 52 doors
- 2 gates
- 9 buildings

Solution required:

- Flexibility to adjust schedules
- Secure the perimeter and school buildings

Paxton products used:

- Entry VR Panels
- Net2 Pro Software
- Entry Monitors

Integration:

Avigilon CCTV

Result:

- Instant lockdown
- Timezones feature to plan access for after school clubs and sports
- Complete customer satisfaction



Dealer training

We offer practical hands-on training for our Net2 system. The BICSI CEC registered program is designed to provide you with the essential knowledge needed to install Paxton products.

- Ensure accurate installation
- Reduce time on site
- Courses are free of charge
- Materials and equipment provided

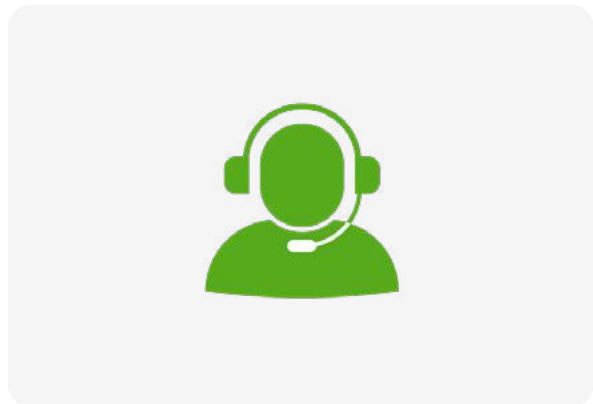
For more information and to book a session, go to <http://paxton.info/3205>.



Industry leading technical support

Call Paxton and you will be put straight through to our expert support team. Our friendly team is available from 2am-8pm EST Monday-Friday.

Call: 877.438.7298
Email: supportUS@paxton-access.com
Skype: USAPaxton.support



Sales literature

We offer an extensive range of brochures and sales guides to support you every step of the way, from sales to specification. All documentation is available to download from our website at <http://paxton.info/3206>.

Case studies

Find out how the Net2 system can be adapted to meet a range of diverse requirements by reading our latest case studies. We have a range of examples covering education, healthcare, retail, leisure, commercial and public buildings.

See our latest case studies here: <http://paxton.info/3207>

Net2 integrations

We want to ensure that we are providing the most sophisticated solutions available. We do this by working with quality manufacturers to provide the best solutions and make them available to you. You can see a list of our Net2 integration partners at <http://paxton.info/3203>.



Newsletter sign up

The Paxton Installer is your monthly newsletter, containing the latest news, product information and updates from us. Every month your copy of the Paxton Installer will arrive in your inbox - full of useful information that will make your job easier and help you to win more business.

Sign up now: <http://paxton.info/3208>

Paxton 5-Year Warranty and Hassle-Free Returns Policy

We offer a five-year warranty on all our products.

If a problem arises, all you have to do is return your Paxton product to your local distributor.

We want to make life as easy as possible for installers of Paxton products. Our five-year warranty and hassle-free returns policy helps us to do this.



Notes

.....

.....

.....

.....

.....

.....

.....

.....

.....

.....

.....

.....

.....

.....

.....

.....

.....

.....

.....

.....

.....

.....

.....

.....

.....

.....

.....



Easy to quote

Build your Net2 access control system one door at a time.

A range of Net2 products to suit any site requirement.

Scalable system - add doors when the budget is available.



Easy to install

Plug and play solutions that connect directly to the network.

Mix and match Net2 products - they are all designed to work together seamlessly.

Clear instructions and color coded wiring labels.



Easy to work with

Industry leading technical support.

5-year warranty and simple returns policy.

Free software upgrades and no multiple license fees.

Net2 Installer Guide

 **Paxton Access Inc.**
138 Commerce Center
Greenville, SC, 29615
USA

 877.438.7298

 supportUS@paxton-access.com

 www.paxton-access.com/us

MIFARE® is a registered trademark of NXP B.V. and is used under license.

The Genuine HID Technology logo is a trademark of HID Global Corporation/ASSA ABLOY AB. Used with permission.

All information and specifications correct at the point of publication, but may be subject to change without notice.

All pictures shown are for illustration purpose only. Actual products may vary.