

ELK-319GB Wireless Glass Break Detector



Description

The ELK-319GB is a Supervised, Wireless Glass Break Detector which provides alarm, tamper, and low battery signal transmissions. The detector is powered by two (2) replaceable 3VDC lithium batteries and is compatible with Elk's 319MHz Receivers/Panels as well as many other panels that operate on the 319.5MHz Frequency and adhere to the ITI/Interlogix protocol.

Specifications

RF frequency: 319.5MHz
 Battery type: Two (2) 3VDC lithium battery (Panasonic CR123 or equiv.)
 Tamper Switch: Front Cover and Pry Off detect
 Range: 20' Ft (6m) Max. 4 sensitivity settings
 Operating Temp: -14 to 122°F (-10 to 50°C)
 Max. Humidity: 90% Relative Humidity non-condensing
 Dimensions 3.9" x 2.75" x 1.5"



Programming (Enrollment)

The following is a general guideline for programming (enrolling) a sensor into the receiver or panel. For more extensive instructions please refer to the receiver or panel instructions.

- Place the panel into the Program mode.
- Proceed to the WIRELESS SETUP menu.
- Select the appropriate zone/sensor location number.
- When the panel prompts to trip the sensor do the following:
 - Separate sensor from the mounting base
 - Remove battery pull tabs (if present) to power the sensor
 - The panel should acknowledge sensor has been learned by a display on the keypad and/or audio alert (depending on the panel). If enrollment does not succeed repeat the process by removing and reinstalling the battery OR try pressing and releasing the tamper plunger.
- For additional sensors of this type repeat the above process. Proceed to the zone programming to assign each sensor's zone definition.

IMPORTANT: Set the Zone Loop as "1".

- Exit the panel Program mode when finished.

Installation Guidelines

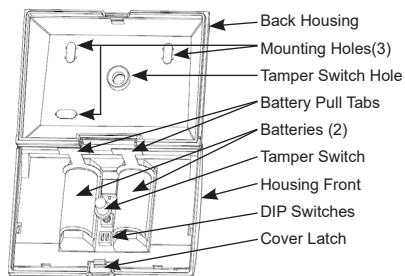
It is recommended that the unit be mounted at a height no lower than 6 1/2' (See Examples of Mounting).

- Maintain a distance of at least 4' ft. away from any active ultrasonic type of sensors or devices.
- All areas of glass to be monitored must be within a clear line of sight of the unit. Distance from the unit to the most remote point of monitored glass shall not exceed 20' ft (6m).
- Do not mount outdoors
- Install sensor within 100 ft. of the receiver or panel.
- Do not mount on metal surfaces as this reduces range.
- Mounting surface must be solid with no vibration.

LED Operation & Testing

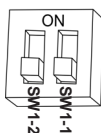
In normal operation the Red LED lights solid for 5 seconds whenever glass breakage is detected. When batteries are first installed a test mode will be active for 5 minutes. During this time the microphone detection range may be tested by clapping your hands or jingling a set of keys. Test mode may be restarted for another 5 minutes by removing and reinstalling the batteries.

RED LED	CONDITION
Slow Flash (once per second)	Test Mode is Active
Rapid Flash for approx. 2 seconds	Sound Detected
ON solid for 5 seconds	Alarm (normal operation)



Sensitivity and Range Settings

The DIP Switches are used to select the Sensitivity. Default setting is MAX. Sensitivity also directly affects the Range of Detection as shown in the chart below.



SENSITIVITY	DETECT RANGE	SW1-1	SW1-2
MAX	6M	OFF	OFF
MEDIUM	4M	OFF	ON
LOW	2.5M	ON	OFF
LOWEST	1.5M	ON	ON

™ Interlogix is a registered trademark belonging to United Technologies.

Examples of Mounting

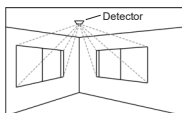


Fig. 1 Ceiling mount for windows on adjacent walls

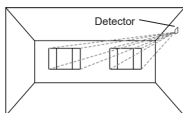


Fig. 2 Wall mount for windows on the same wall

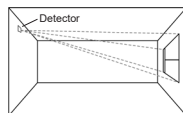


Fig. 3 Wall mount for windows on opposite wall

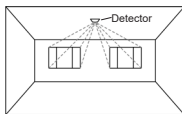


Fig. 4 Ceiling mount for windows on the same wall

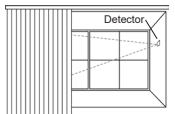


Fig. 5 Detector mount between window and curtains (louvers)

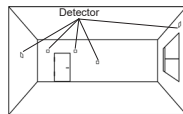


Fig. 6 Places not recommended for mounting of detector

Battery Life and Replacement

Battery life depends on environmental temperature and how often sensor transmits signals. Sensor transmits a low battery indication to panel when it detects the battery voltage is low. **Replace both batteries as soon as possible.**

- Depress cover latch on top edge and lower cover.
- Remove both batteries from their holders and install two (2) new batteries observing (+) polarity marked on the batteries and the circuit board.

CAUTION: Battery may explode if mistreated. Do not recharge, disassemble, incinerate or expose to heat above 212° F (100° C). Keep away from children.

Battery Disposal: The batteries used in this sensor are lithium batteries and are not reusable. Dispose of used lithium batteries according to your local hazardous waste disposal laws.

FCC AND IC COMPLIANCE STATEMENT:

This equipment has been tested and found to comply with the limits for a Class B digital device, pursuant to Part 15 of the FCC Rules. These limits are designed to provide reasonable protection against harmful interference in a residential installation.

This equipment generates, uses and can radiate radio frequency energy and, if not installed and used in accordance with the instructions, may cause harmful interference to radio communications. However, there is no guarantee that interference will not occur in a particular installation.

If this equipment does cause harmful interference to radio or television reception, which can be determined by turning the equipment off and on, the user is encouraged to try to correct the interference by one or more of the following measures:

- Reorient or relocate the receiving antenna.
- Increase the separation between the equipment and receiver.
- Connect the equipment into an outlet on a circuit different from that to which the receiver is connected.
- Consult the dealer or an experienced radio/TV technician for help.

This device complies with Industry Canada license-exempt RSS standard(s). Operation is subject to the following two conditions: (1) this device may not cause interference, and (2) this device must accept any interference, including interference that may cause undesired operation of the device.

Cet appareil est conforme avec Industrie Canada exempts de licence standard RSS (s). Son fonctionnement est soumis aux deux conditions suivantes: (1) cet appareil ne doit pas provoquer d'interférences et (2) cet appareil doit accepter toute interférence, y compris celles pouvant causer un mauvais fonctionnement de l'appareil.

In accordance with FCC requirements of human exposure to radio frequency fields, the radiating element shall be installed such that a minimum separation distance of 20 cm is maintained from the general population.

FCC ID: 2ABBZ-RF-GB-319 IC: 11817A-RFGB319

This device complies with Part 15 of the FCC Rules. Operation is subject to the following two conditions: (1) This device may not cause harmful interference, and (2) this device must accept any interference received, including interference that may cause undesired operation. Changes or modifications not expressly approved by the party responsible for compliance could void the user's authority to operate the equipment. This Class B digital apparatus complies with Canadian ICES-3B. Cet appareil numérique de la classe B est conforme à la norme NMB-003 du Canada.

LIMITED WARRANTY: THIS WIRELESS SENSOR IS WARRANTED TO BE FREE FROM DEFECTS AND WORKMANSHIP FOR A PERIOD OF 2 YEARS FROM DATE OF MANUFACTURE EXCLUDING BATTERIES. BATTERIES USED WITH WIRELESS DEVICES ARE NOT WARRANTED. MANUFACTURER HEREBY DISCLAIMS ANY AND ALL OTHER WARRANTIES AND REPRESENTATIONS, WHETHER EXPRESS, IMPLIED, STATUTORY OR OTHERWISE INCLUDING (BUT NOT LIMITED TO) ANY WARRANTIES OF MERCHANTABILITY OR FITNESS FOR A PARTICULAR PURPOSE WITH RESPECT TO THESE PRODUCTS AND ANY RELATED SOFTWARE. MANUFACTURER FURTHER DISCLAIMS ANY OTHER IMPLIED WARRANTY UNDER THE UNIFORM COMPUTER INFORMATION TRANSACTIONS ACT OR SIMILAR LAW AS ENACTED BY ANY STATE. (USA only) SOME STATES DO NOT ALLOW THE EXCLUSION OF IMPLIED WARRANTIES, SO THE ABOVE EXCLUSION MAY NOT APPLY TO YOU. THIS WARRANTY GIVES YOU SPECIFIC LEGAL RIGHTS AND YOU MAY ALSO HAVE OTHER LEGAL RIGHTS THAT VARY FROM STATE TO STATE. MANUFACTURER MAKES NO REPRESENTATION, WARRANTY, COVENANT OR PROMISE THAT ITS ALARM PRODUCTS AND/OR RELATED SOFTWARE (I) WILL NOT BE HACKED, COMPROMISED AND/OR CIRCUMVENTED; (II) WILL PREVENT, OR PROVIDE ADEQUATE WARNING OR PROTECTION FROM, BREAK-INS, BURGLARY, ROBBERY, FIRE; OR (III) WILL WORK PROPERLY IN ALL ENVIRONMENTS & APPLICATIONS.

NOTE: Elk Products is not responsible for any changes or modifications not expressly approved by the party responsible for compliance. Such modifications could void the user's authority to operate the equipment.