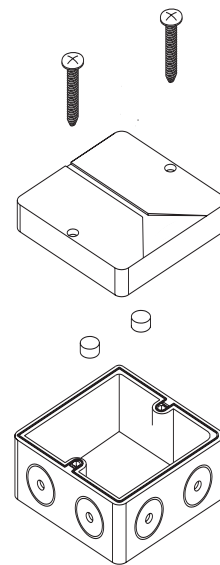




**COMPOSITION**

- The receiver is composed by :
- 1 box with electronics
- 1 cover
- 2 screws
- 2 gumm taps
- 1 antenna wire
- 2 screws with plugs



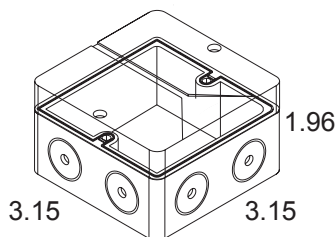
**INTRODUCTION**

The receiver Radium WR4 is designed for the control of automatic closing systems and anti-burglar systems, thanks to its very high security coding system (KeeLoq® Hopping code). The code sent by the transmitter changes at every activation, avoiding any scanning and copying risk. A special algorithm allows to keep synchronized transmitter and receiver. The receiver has up to 4 output relays ( with NO and NO/NC contacts, and can be connected to many types of mechanics ( gate, garage door, rolling shutters, awnings, anti-burglar appliances, lighting, etc.). The programming can be done in self-learning mode by means of one button. The housing protection of IP65 allows external installations. The appliance full complies with the European Regulations 2006/95/CE, 2004/108/CE, 99/05/CE and EN 60335-1.

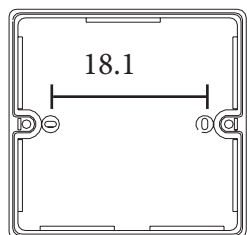
**SPECIFICATIONS**

Receiver type	Superheterodyne
Carrier frequency	433,92 MHz
Local oscillator frequency	6.6128 MHz
Demodulation	AM/ASK
Local Oscillator	VCO / PLL
Channel width	> 25 KHz
Intermediate frequency	10.7 MHz
Input sensitivity	-115 dBm
Input load:	50 Ohm
Power supply:	12 / 24 Vac/dc
Consumption:	
Steady / 12 Vdc ( 2 relays excited)	15 mA / 49 mA
Steady / 24 Vdc ( 2 relays excited)	19 mA / 55 mA
Max applicable power	24VA
Relay number	4
Relay mode	3 x Pulse, 1 x Pulse/Step
Contacts	NO, NO/NC
Memory capacity	85 transmitter buttons
TX security code	KeeLoq® Hopping code
Cominations	2exp64
Operating temperature	-20°/+70°C
Housing protection	IP65
Weight	gr. 130
Overall dimensions (inch)	3.15 x 3.15 x 1.96

**DIMENSIONS**



**FIXING**



**IMPORTANT**

*Receiver location is crucial for optimal system performance. Place the receiver far from interference sources such as magnetic fields or radio emissions (neon ballasts, electric motors, etc.). Ensure quality signal reception by doing range tests before permanently mounting the receiver.*

**COMPATIBLE REMOTES**



**R1**  
1-Button Remote

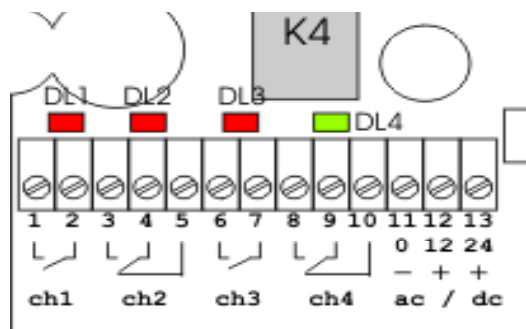


**R2**  
2-Button Remote



**R4**  
4-Button Remote

**CONNECTIONS**



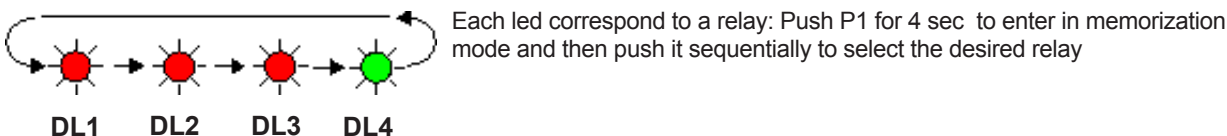
**LEGENDA**

- terminal 1 = Contact NO Relay1
- terminal 2 = Contact C Relay1
- terminal 3 = Contact NO Relay2
- terminal 4 = Contact C Relay2
- terminal 5 = Contact NC Relay2
- terminal 6 = Contact NO Relay3
- terminal 7 = Contact C Relay3
- terminal 8 = Contact NO Relay4
- terminal 9 = Contact C Relay4
- terminal 10 = Contact NC Relay4
- terminal 11 = Input supply Common
- terminal 12 = Input supply +12 Vac/dc
- terminal 13 = Input supply +24 Vac/dc
- terminal 14 = Wire Antenna
- terminal 15 = GND Antenna

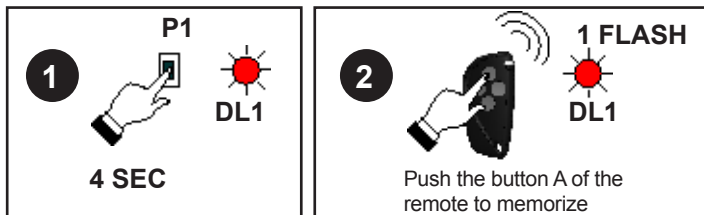
**RELAY K4 CONFIGURATION**



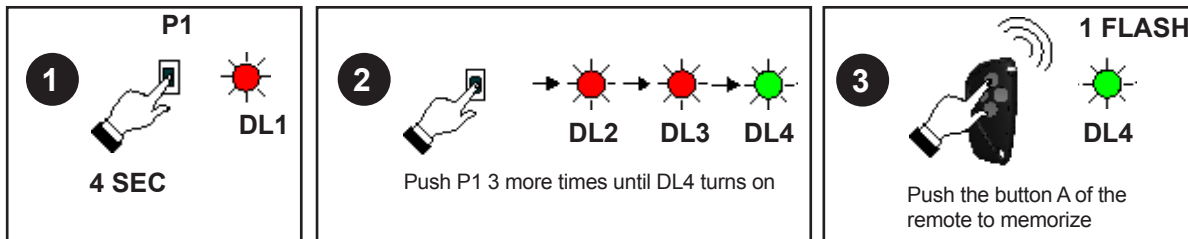
**TRANSMITTERS MEMORIZING**



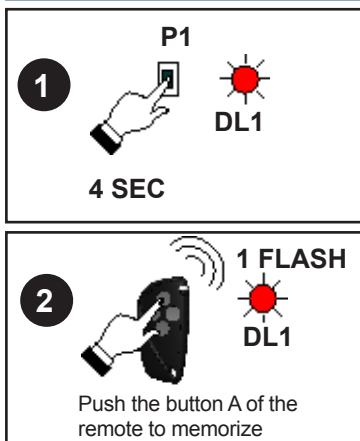
**EXAMPLE 1 : MEMORIZATION OF BUTTON A ON RELAY 1**



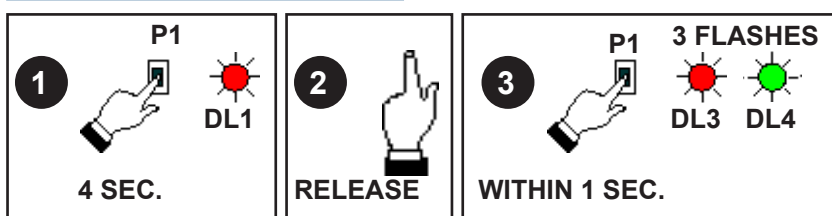
**EXAMPLE 2 : MEMORIZATION OF BUTTON A ON RELAY 4**



**TRANSMITTERS CANCELLING**



**FULL MEMORY ERASURE**



**WARRANTY**

The warranty period for this product is 60 months, beginning from the manufacturer date. During this period, if the product does not work correctly, due to a defective component, the product will be repaired or substituted at our discretion. The guarantee does not cover the plastic container integrity. After-sale service is supplied at the factory.

Manufactured by CDVI Wireless  
Made in Italy

