



# CDVI

EN

ENGLISH



## RSIP

**RS-232 to TCP/IP  
Converter**

*The installer's choice*  
**cdvigroup.com**

# RSIP

## RS-232 to TCP/IP Converter

### 1] PRODUCT PRESENTATION

RSIP is a sleek and compact Serial-to-Ethernet device server, providing quick and easy Ethernet connectivity to virtually any device or machine with a serial interface.

#### Ethernet Interface

- Interface: 10Base-T /100Base-T (Auto-sensing)
- Speed: 10/100 Mbps
- Connector: RJ45
- Protocols: UDP, TCP, ARP, Telnet, ICMP, SNMP, DHCP, BOOTP, TFTP, Auto IP, HTTP, Telnet Com Port Control

#### Serial Interface

- Baud Rate: 300bps to 921.6 Kbps
- Characters: 7 or 8 data bits
- Stop Bits: 1 or 2
- Parity: Odd, even, more
- Modem Control Signals: DTR, DSR/DCD
- Flow Control: XON/XOFF (software), CTS/RTS (hardware)

#### Serial Connectors

- Single-port: DB9F (DCE Pinned)

#### LED Indicators

- Power/Status, Link, Activity, Serial RX Activity & TX Activity

#### Power Requirements

- Input Voltage: 12V at mini-USB-B jack
- Input Voltage: 5-15 VDC at DB9F pin 9
- Power Consumption: 1.3W max

#### Security

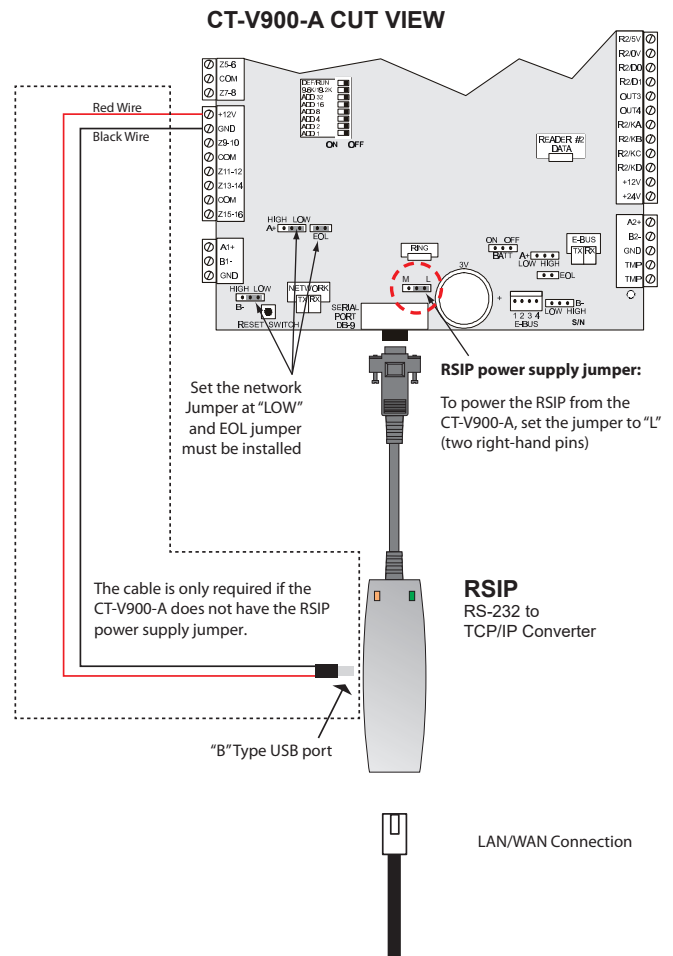
- 128/192/256-bit AES Encryption

- Temperature Range: -40° to 85°C (-40° to 185° F)

### 2] NOTES AND RECOMMENDATIONS

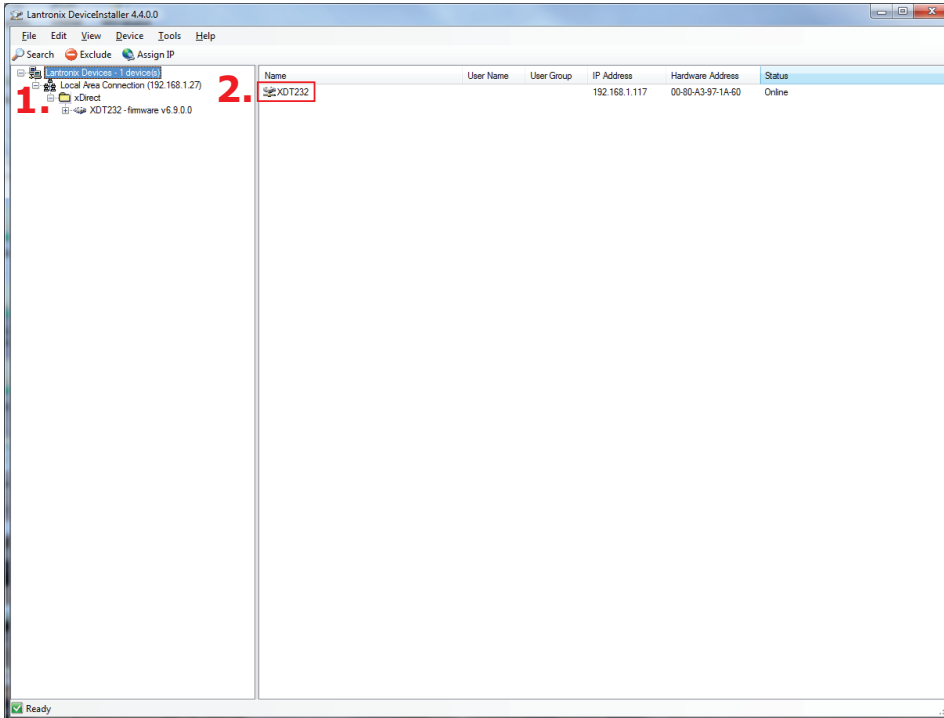
- Emissions
  - FCC Part 15, Subpart B, Class B
  - EN55022, Class B
  - EN61000-3-2, EN61000-3-3
  - ICES-003 Issue 4
  - AS/NZS, CISPR22
- Immunity
  - EN55024, EN61000-4-2, EN6100-4-3, EN61000-4-4, EN61000-4-5, EN61000-4-6, EN61000-4-8, EN61000-4-11
- Agency Approvals
  - UL 60950-1, 2nd Edition
  - CAN/CSA C22.2 No. 60950-1-07, 2nd Edition
  - CE, VCCI, C-Tick
  - IEC 60950-1 2005, 2nd Edition

### 3] MOUNTING INSTRUCTION



# RSIP RS-232 to TCP/IP Converter

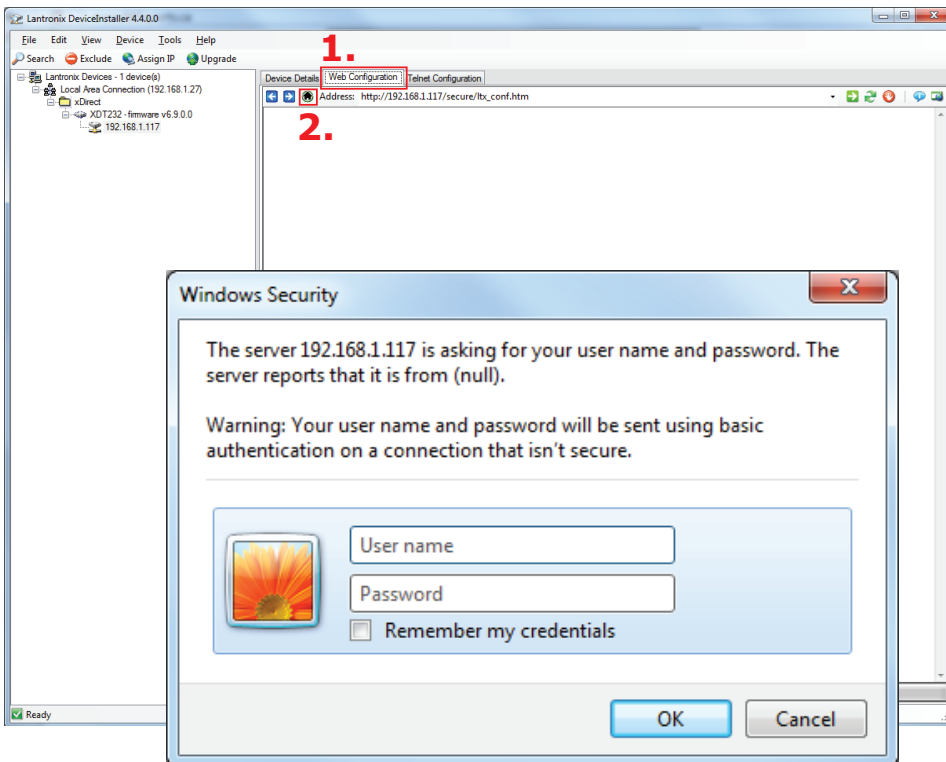
## 4] SOFTWARE CONFIGURATION



Download from our web site ([cdvi.ca/Download\\_Center.aspx](http://cdvi.ca/Download_Center.aspx)) and install the "**DeviceInstaller**" application.

Once RSIP installed and power up

1. Start the «**DeviceInstaller**» application. (Program Files/Lantronix/DeviceInstaller4.4/DeviceInstaller)
2. Double click on "**XDT232**"

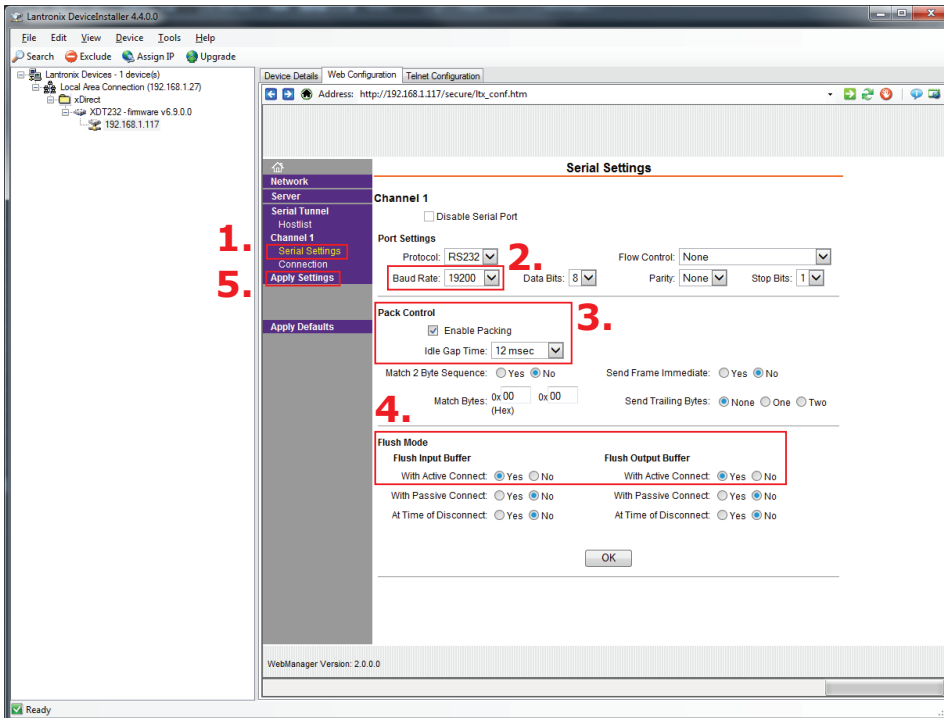


1. Double click on "**Web Configuration**"
2. then click on "**Home**" button.

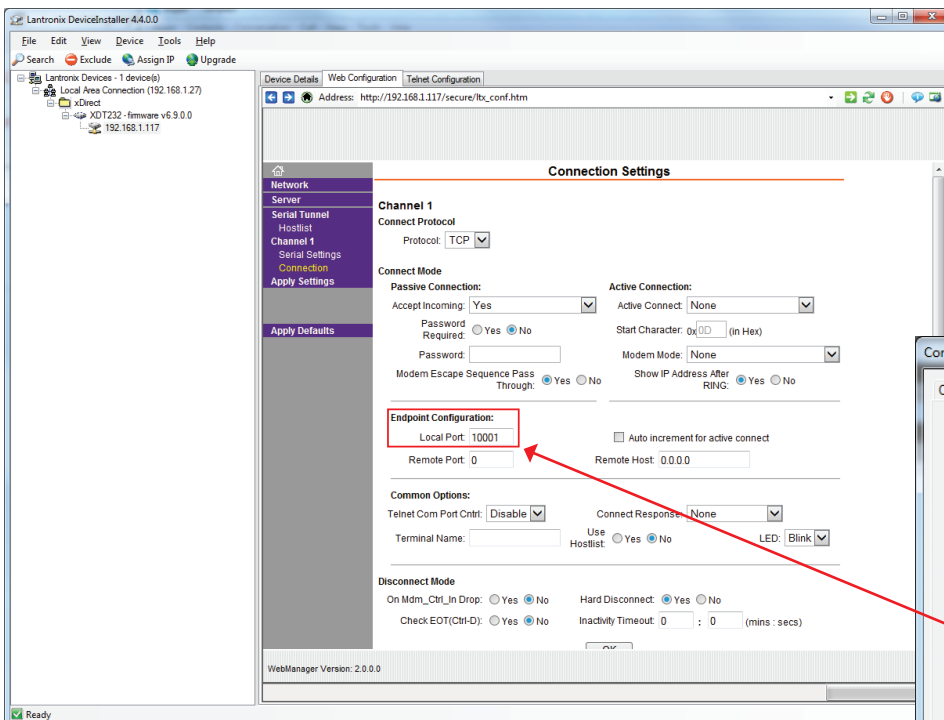
Windows Security will appear, type default user name and password

- User name: **admin**
- Password (All caps): **PASS**
- Click OK

# RSIP RS-232 to TCP/IP Converter



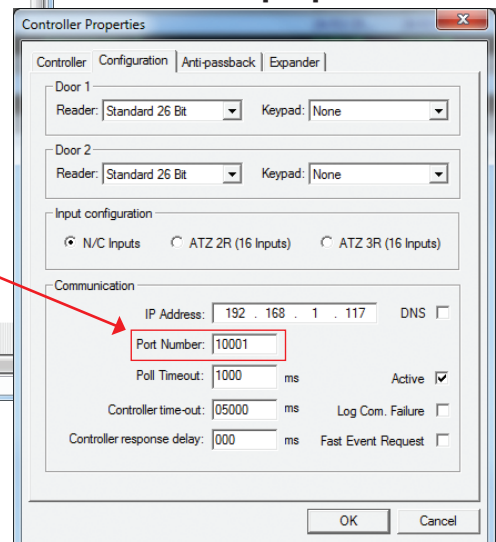
1. Click on **"Serial Settings"** tab
2. Set Baud rate to 19200 (CT-900-A default setting)
3. Enable **"Pack Control"** to 12 msec
4. Set Flush Mode > Flush Input Buffer > With Active Connect put **"Yes"**  
Flush Output Buffer > With Active Connect put **"Yes"**  
Keep the default setting for the rest
5. Click **«Apply Setting»** then click OK



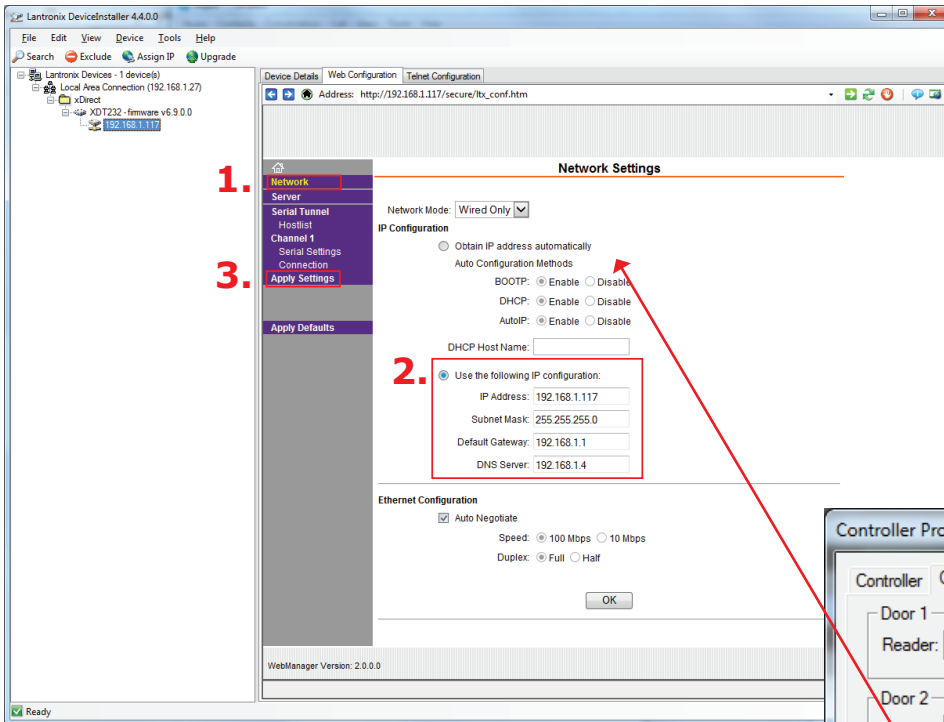
Click on **"Connection"** tab

- Keep the default setting (The port number must be defined in ALL controllers connected to that RSIP module. To set the port number in the CTV-900-A controller, go to the controller properties window, tab «configuration» (by default is 1001, see diagram below).

## CTV-900-A Controller properties window

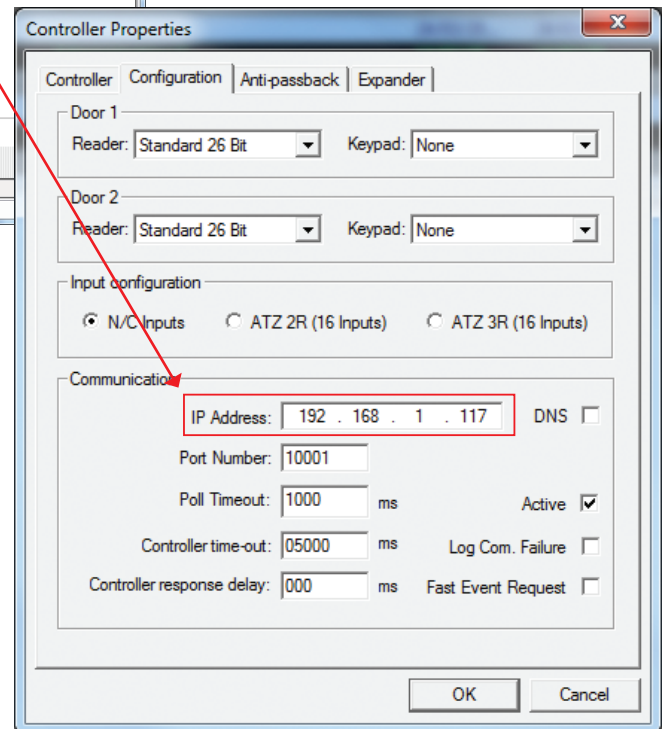


# RSIP RS-232 to TCP/IP Converter

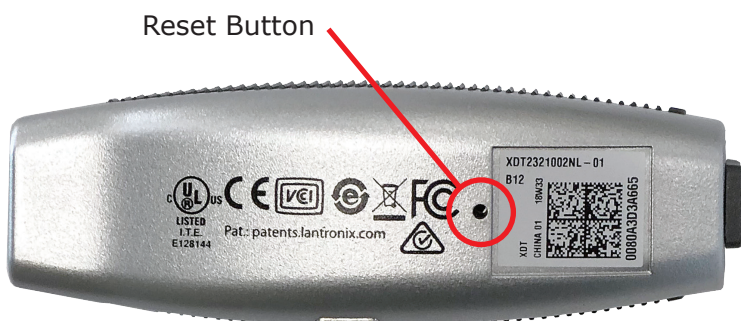


1. Click on **"Network"** tab
  - Define IP configuration  
(The IP address must be defined in ALL controllers connected to that RSIP module. To set the IP address in the CTV-900-A controller, go to the controller properties window, tab «configuration» (see diagram below).
  2. To set the IP address in the CTV-900-A controller, go into the properties of the controller and the «configuration» tab.
  3. Click **"Apply Setting"**
- You are done.

## CTV-900-A Controller properties window



## 5] HARDWARE FACTORY DEFAULT



While the RSIP is powered, press the reset button for about 10 seconds then release it to reset to factory default.

Use a paperclip or something sharp to depress the reset button.

## RSIP RS-232 to TCP/IP Converter

### 5] WARRANTY - TERMS & CONDITIONS

---

The "5 Year Warranty" is offered by CDVI exclusively for CDVI products featuring the logo "5 Year Warranty", and supplied by authorized CDVI dealers participating in the offer. You can obtain the address of the local authorized dealer participating in the offer by contacting CDVI or a local CDVI subsidiary. The "5 Year Warranty" is only applicable to hidden defects detected during the lifetime of the product, as defined by the CDVI Group (5 years or 200 000 operations - whichever of the two expires first).

The "5 Year Warranty" conditions shall not modify the sales conditions between CDVI and its customers.

#### DURATION OF THE OFFER:

- This offer is valid from July 1st 2010; CDVI reserves the right to terminate this offer without prior notice.
- However, any product already registered up to the date of withdrawal of the offer will remain eligible for the "5 Year Warranty".
- The warranty applies only to the available products mentioned in the above statement.

#### CONDITIONS :

- Hidden defects are guaranteed for an unlimited shelf life (period of time before use).
- To be eligible for the "5 Year Warranty", the product must be registered at CDVI within one month of its delivery to the end user, by completing in and returning back the "warranty" form by fax, email or post to the local CDVI subsidiary. This information may also be registered on line at [www.cdvigroup.com](http://www.cdvigroup.com).
- Only the issue of the "5 Year Warranty" certificate by CDVI can confirm product registration; CDVI may not be held responsible in the event of loss or non-presentation of the form.
- The "5 Year Warranty" only applies to products installed by a skilled and experienced personal with the necessary trade qualifications to install according to the highest standards, respecting the standards, instructions and guidelines defined by CDVI and according to the maximum recommended specifications.
- To enable CDVI to determine whether a product is eligible to claim for the "5 Year Warranty", after prior issue of a return of materials authorization number (RMA) by CDVI, the customer must return the product and all of its accessories in the original packaging with a copy of its invoice. The transport fees shall be paid by the customer and the package must be returned to CDVI or to a CDVI authorized repair centre.
- Eligibility for the "5 Year Warranty" cover must be confirmed by CDVI.
- The "5 Year Warranty" only covers the replacement or repair of the parts acknowledged as faulty by CDVI.
- CDVI reserves the right to respect its obligation by replacing the product or the parts acknowledged as faulty by a standard part replacement or by a product or new parts, or by an updated or improved version of the product with identical or similar functionalities.
- In respect of the applicable law, CDVI cannot be held responsible for material or immaterial damages caused to goods or to third parties and as a direct or indirect result of the installation, utilization, product faults or poor functioning of a device.
- The "5 Year Warranty" is non-assignable and non-transferrable; only the person who registered the aforementioned warranty may benefit from the warranty.
- The "5 Year Warranty" is limited to the eligible product and is strictly limited to the conditions in effect on the date of purchase by the customer.

**RSIP**  
RS-232 to TCP/IP Converter

**NOT COVERED BY THE "5 YEAR WARRANTY":**

- Any product which has undergone even the slightest modification or change;
- Any product which has been installed and/or used with any auxiliary device not supplied by CDVI;
- Any product which has been used for demonstrations or display;
- Any product or its elements considered as "consumables" such as fuses, lights and batteries for example;
- Failure or malfunctioning as a result of an accident, poor storage conditions, unsuitable assembly, bad utilization or handling, poor maintenance, unsuitable repair or intervention.
- Any call-out and installation fees (for assembly and dismantling) as well as transport costs (to and from the repair centre) and maintenance fees.

**THE INSTALLER’S RESPONSIBILITIES:**

When registering the 5 Year Warranty on line, the installer is responsible for the information supplied. In case of errors, the 5 Year Warranty will not be applicable.

**NOTES:**

.....  
.....  
.....  
.....  
.....  
.....  
.....  
.....  
.....  
.....  
.....  
.....  
.....  
.....  
.....  
.....  
.....  
.....  
.....  
.....  
.....  
.....  
.....  
.....  
.....

**Reference : G0301H000003**  
**Extranet : EXE-CDVI\_IM RSIP CMYK A4 EN 01**



**CDVI Group**

FRANCE (Headquarter/Siège social)  
Phone: +33 (0)1 48 91 01 02  
Fax: +33 (0)1 48 91 21 21

**CDVI**

FRANCE + EXPORT  
Phone: +33 (0)1 48 91 01 02  
Fax: +33 (0)1 48 91 21 21

**CDVI AMERICAS**

[CANADA - USA - LATIN AMERICA]  
Phone: +1 (450) 682 7945  
Fax: +1 (450) 682 9590

**CDVI**

BENELUX  
[BELGIUM - NETHERLAND - LUXEMBOURG]  
Phone: +32 (0) 56 73 93 00  
Fax: +32 (0) 56 73 93 05

**CDVI**

TAIWAN  
Phone: +886 (0)42471 2188  
Fax: +886 (0)42471 2131

**CDVI**

SUISSE  
Phone: +41 (0)21 882 18 41  
Fax: +41 (0)21 882 18 42

**CDVI**

CHINA  
Phone: +86 (0)10 62414516  
Fax: +86 (0)10 62414519

**CDVI**

IBÉRICA  
[SPAIN - PORTUGAL]  
Phone: +34 (0)935 390 966  
Fax: +34 (0)935 390 970

**CDVI**

ITALIA  
Phone: +39 0321 90 573  
Fax: +39 335 127 89 96

**CDVI**

MAROC  
Phone: +212 (0)5 22 48 09 40  
Fax: +212 (0)5 22 48 34 69

**CDVI**

SWEDEN  
[SWEDEN - DENMARK - NORWAY - FINLAND]  
Phone: +46 (0)31 760 19 30  
Fax: +46 (0)31 748 09 30

**CDVI**

UK  
[UNITED KINGDOM - IRELAND]  
Phone: +44 (0)1628 531300  
Fax: +44 (0)1628 531003

**CDVI DIGIT**

FRANCE  
Phone: +33 (0)1 41 71 06 85  
Fax: +33 (0)1 41 71 06 86

All the information contained within this document (pictures, drawing, features, specifications and dimensions) could be perceptibly different and can be changed without prior notice.



*The installer's choice*  
**cdvigroup.com**