



CDVI

EN ENGLISH



GALEOW

Wiegand Illuminated Keypad

The installer's choice
cdvigroup.com

GALEOW

Illuminated keypad - Wiegand

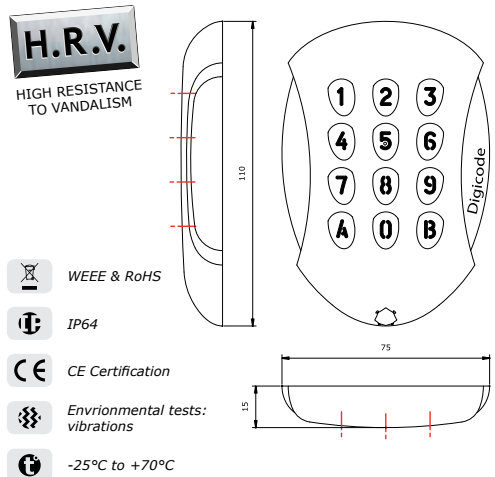
1] GENERAL INFORMATION

■ Output formats:

- Wiegand,
- Standard format,
- ISO Track 2 format.

■ Back-lighted.

- Rear switch on the GALEOW for entry to and exit from programming mode.
- Permanent E2PROM memory back-up.
- Number of digits: 4, 5 or 6.
- Operating voltage: 12 V DC.
- Consumption: 100 mA max.



2] NOTES AND RECOMMENDATIONS

Wiring reminder

- In the case of direct connection to the CTV900A (CENTAUR) central controller or AC22 (ATRIUM) door controllers, the GALEOW must be installed within a maximum distance of 50 m.
- In other cases, the distance between the GALEOW and the (INTBUSW) door controller must be within a maximum of 50 m and the distance between the central controller or panel and the last (INTBUSW) door controller may be up to 1200 m maximum.
- Take care not to pass your wires close to «High voltage» cables (e.g.: 230 V AC).

Recommended cables

2 pairs of cables (4 strand) SYT1 8/10ths (Shielded cables - AWG 20).

3] MOUNTING KIT

	Varistor	Torx® screw (M4x10)	T20 Torx® spanner	Cap	mounting screw (M4x30)	S5 plastic anchor
GALEOW	1	1	1	2	2	2

Fitting

To optimise the mounting of the GALEOW and to combat attempted tampering, it should be fitted on a flat surface.

Recommended power supplies

- A power supply independent of the central controller is necessary for the GALEOW.
- There are two suitable power supplies for this Digicode® keypad: ARD12 or BS60

Installation recommendations

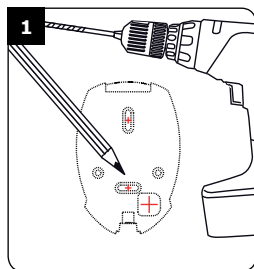
- To protect the installation, remember to:
- install the varistor in parallel on the locking system power supply side,
 - install a 120 ohm resistor between A and B on the last BUS RS485 door controller.

GALEOW

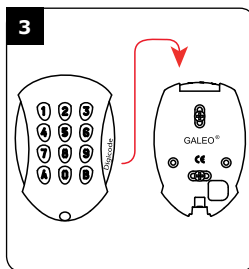
Illuminated keypad - Wiegand

4] MOUNTING

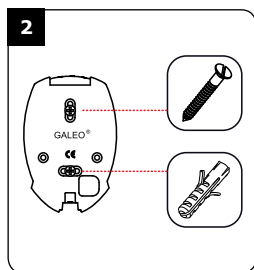
After having verified that the fitting kit is complete and having made the connection of the GALEOW coded keypad (with or without the door controller depending on whether you use a central controller or panel), you can proceed with the final installation of the product. Collect up the necessary tools (drill, screwdriver, measuring tape, etc) and follow the GALEOW fitting instructions:



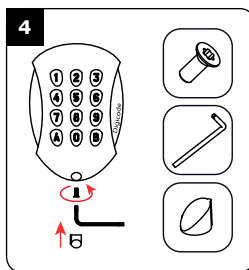
Confirm the distance between the GALEOW and central controller or door controller (see page 3 «Reminders and recommendations»). Mark out the locations and drill two mounting holes (Ø 5 mm drill bit and minimum depth = 35 mm) as well as the hole for the keypad's electric cable.



Insert the GALEOW electric cable through its cable hole and attach it to its support from above with the top hook.



Insert the 2 plastic anchors in the holes. Mount the back plate of the GALEOW on your chosen support using the supplied (M4x30) mounting screws.



Fix the GALEOW on its support using the TORX® screw and its special tool (elbow male screw spanner). Apply the screw cap to complete the installation of this product.

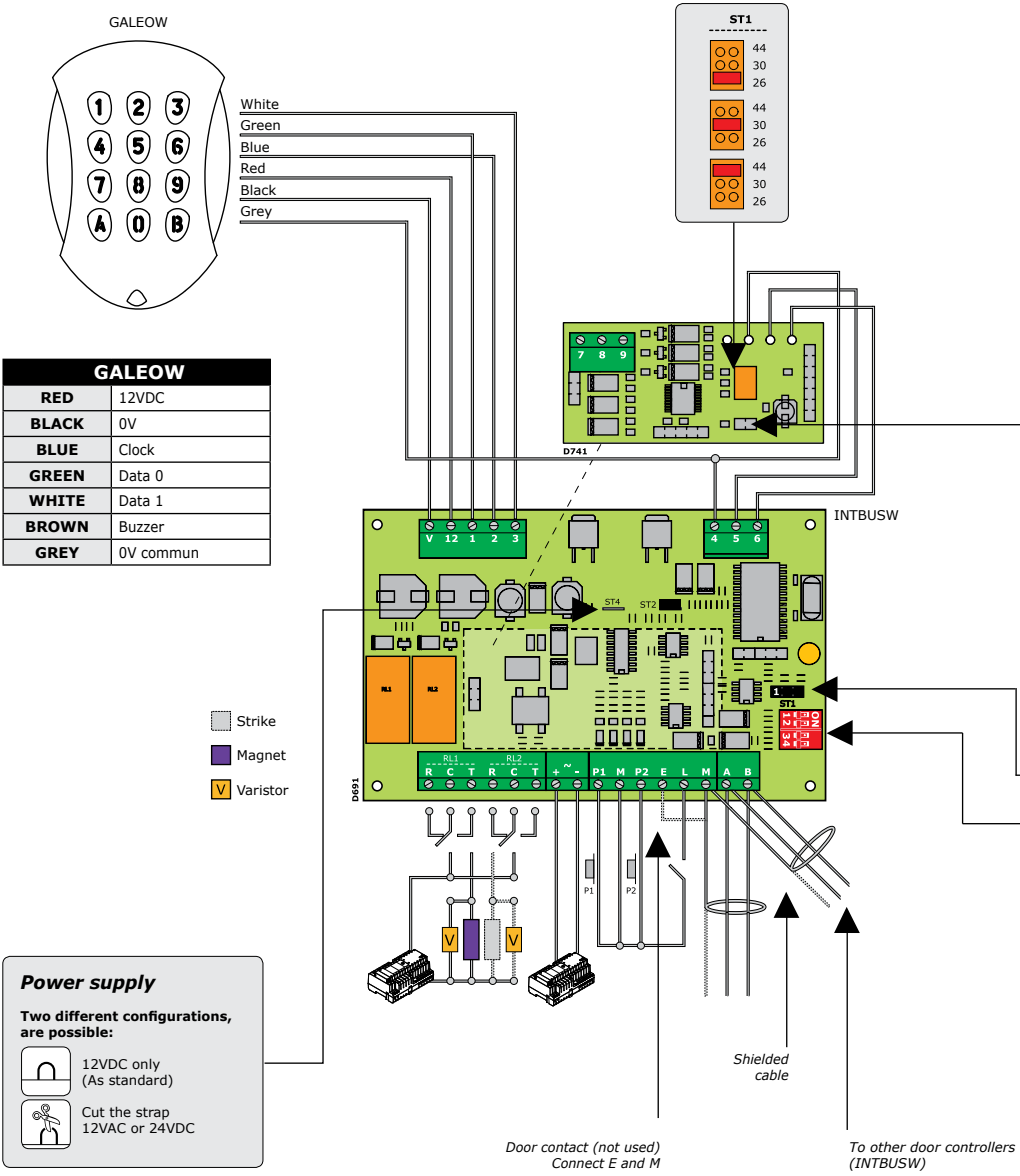
5] CONNECTIONS: DIRECT CONNECTION TO THE TERMINAL BLOCKS OF A CONTROLLER

		Controller terminal wirings						
GALEOW	Outputs	CTV900A (CENTAUR)	AC22 (ATRIUM)	UCA3	PROMI1000 PROMI1000PC	PROMI500	DGPROX	DG502
RED	Input voltage 12VDC	+12V	+12V					
BLACK	0V	R2/0V	GND					
BROWN	Buzzer command input	OUT5/6	BUZ					
GREEN	DATA 0	R2/D0	D0					
WHITE	DATA 1	R2/D1	D1					
BLUE	CLOCK			6 and 10	1	1	1	1 and 6
GREY	0V COMMON			5 and 9	M	M	M	4

GALEOW

Illuminated keypad - Wiegand

6] CONNECTIONS: CONNECTION WITH THE (INTBUSW) DOOR CONTROLLER



GALEOW	
RED	12VDC
BLACK	0V
BLUE	Clock
GREEN	Data 0
WHITE	Data 1
BROWN	Buzzer
GREY	0V comun

- Strike
- Magnet
- Varistor

Power supply

Two different configurations, are possible:

- 12VDC only (As standard)
- Cut the strap 12VAC or 24VDC

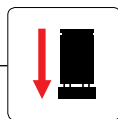
Door contact (not used)
Connect E and M

To other door controllers
(INTBUSW)

GALEOW

Illuminated keypad - Wiegand

INTBUSW (Door controller)	
Terminal block : Motherboard	
V	Input voltage -
12	Input voltage +
1	Data 0
2	Clock
3	Data 1
Terminal block : Motherboard	
R	N/C contact eletromagnetic lock (+)
C	Common contact power supply (+)
T	N/O contact electric release
R	N/C contact alarm
C	Common
T	N/O contact alarm
+ ~ -	Input voltage DC or AC, 12V or 24V
P1	Request-to-enter input
M	Common (P1 et P2)
P2	Request-to-enter input
E	Door contact, N/C (Door closed) and N/O (Door open)
L	Reader activation input (N/O) reader enabled and (N/C) reader disabled
M	Common (E and M) or (E and L)
A	RS485 Bus (All the A must be connected together in daisy chain)
B	RS485 Bus (All the B must be connected together in daisy chain)
Terminal block - 3 points : Piggyback board	
7	LED > Red color
8	LED > Green color
9	Buzzer



*Without jumper : without clock
With jumper : with clock*

STAND ALONE MODE

TELACCESS

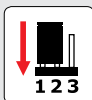
- Dipswitch address set up
- Dip4 = ON



DIP SWITCH adressng

1	2	3	4	Mode
ON	ON	ON	ON	Front plate
OFF	ON	ON	ON	Reader 1
ON	OFF	ON	ON	Reader 2
OFF	OFF	ON	ON	Reader 3
ON	ON	OFF	ON	Reader 4

ST1 (Programming jumper) : Normal



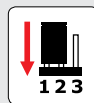
CENTRALIZED MODE

- TERENA

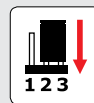
- Address programming during installation
- Dip4 = OFF



ST1 (Programming jumper)



Normal (As standard)

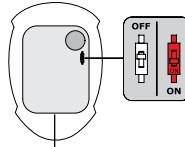


Installation

GALEOW

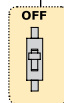
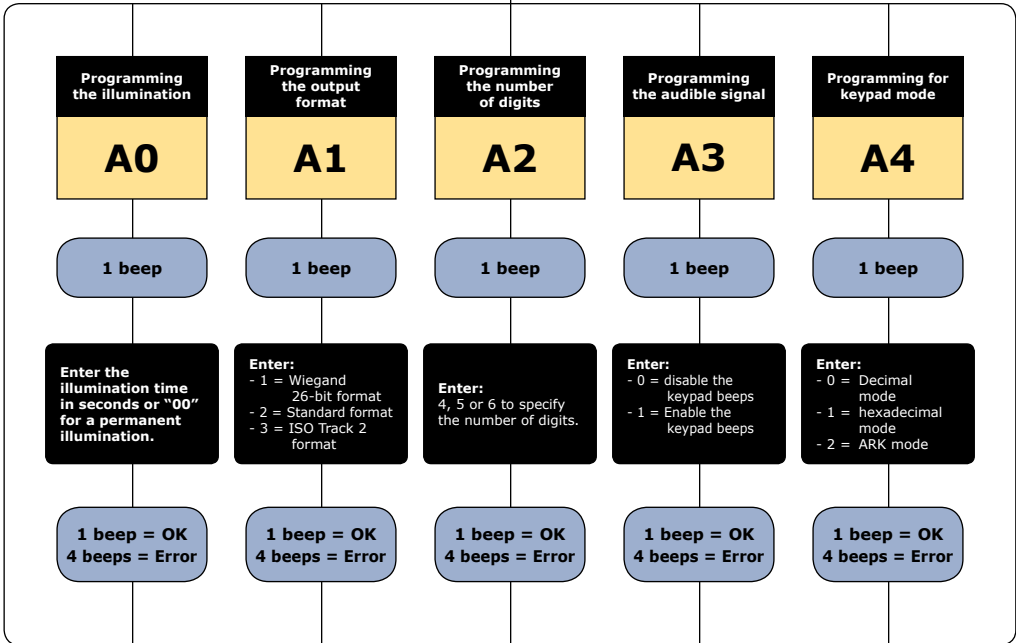
Illuminated keypad - Wiegand

8] PROGRAMMING



Turn the switch to ON to start programming

2 beeps are emitted



Turn the switch to OFF to finish programming

2 beeps

GALEOW

Illuminated keypad - Wiegand

Default values

- Illumination duration: 10 seconds,
- User code length: 5 digits,
- 26 bit wiegand output,
- Buzzer disabled,
- Decimal mode.

Audible Signal

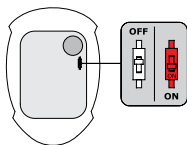
- 1 short beep > keypad powered and key presses,
- 1 long beep > data computing in programming,
- 2 short beeps > Entry or Exit from programming,
- 4 short beeps > data computing error.

Code Length

- In decimal mode, the user code must be in 4, 5 or 6 digits. The keypad key B is used to validate the programming.
- In hexadecimal mode, the "A" keypad key is forbidden.
- In ARK mode, all the selected keypad keys are sending to the controller.

A] ENTRY IN PROGRAMMING

1. Turn off the power.
Put the switch to ON.
Put back the power.



2. Two beeps are emitted to confirm entry in programming.

The command control of the buzzer is not possible in programming mode.

B] ILLUMINATION DURATION

1. Enter in programming*.
2. Enter A0 to program the illumination duration :
 - One beep is emitted.
 - Enter the time in seconds, 10 for 10 seconds to 99 for 99 seconds or enter 00 for a permanent illumination.
 - One beep is emitted to confirm the illumination duration.

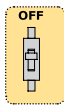


3. Remove the ST1 jumper :
 - Two beeps are emitted to confirm exit from programming.



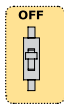
C] OUTPUT FORMAT

1. Enter in programming*.
2. Press A1 to enter in the output format menu :
 - One beep is emitted.
 - Press 1 to select 26-bit wiegand output format
 - Press 2 to select Standard output format
 - Press 3 to select ISO Track 2 output format
 - One beep is emitted to confirm programming.
3. Remove the ST1 jumper:
 - Two beeps are emitted to confirm exit from programming.



D] CODE LENGTH

1. Enter in programming mode*.
2. Press A2 to enter in the code length setting menu:
 - One beep is emitted.
 - Press 4 for a 4-digit user code, press 5 for a 5-digit user code or press 6 for a 6-digit user code.
 - One beep is emitted to confirm programming.
3. Remove the ST1 jumper:
 - Two beeps are emitted to confirm exit from programming.
 - 4 beeps indicate a data computing error.



* Please refer to the procedure to start programming at the start of this section

GALEOW

Illuminated keypad - Wiegand

E] AUDIBLE SIGNAL

The audible signal is always enabled in programming mode.

In factory default, the buzzer is disabled when pressing a key. To enable the buzzer:

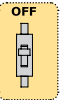
1. Enter in programming mode*.
2. Press A3:
 - One beep is emitted.
 - Press 0 to disable the audible signal.
 - Press 1 to enable the audible signal.
 - One beep is emitted to confirm programming.
3. Remove the ST1 jumper:
 - Two beeps are emitted to confirm exit from programming.



2. Press A4 to enter in the mode setting menu:
 - One beep is emitted.
 - Press 0 for a decimal mode, press 1 for hexadecimal mode and 2 for ARK mode.
 - One beep is emitted to confirm programming

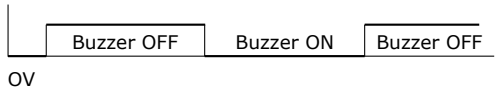


3. Remove the ST1 jumper:
 - Two beeps are emitted to confirm exit from programming.
 - 4 beeps indicate a data computing error.



G] EXTERNAL CONTROL OF THE BUZZER

The buzzer can be activated from an external input. The control is done with a logic signal on the input.

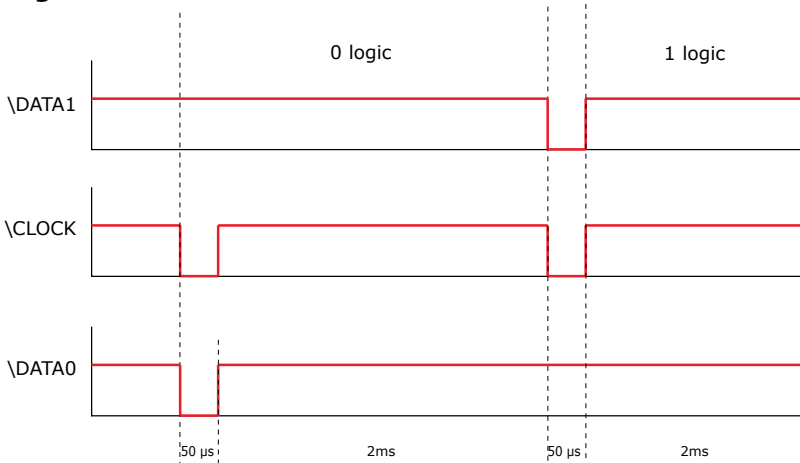


F] DECIMAL OR KEYPAD MODE

1. Enter in programming mode*.

9] OUTPUT FORMAT

Chronograms



* Please refer to the procedure to start programming at the start of this section

GALEOW

Illuminated keypad - Wiegand

10] WIEGAND 26 BITS OUTPUT FORMAT

Interface

- The output format is 26-bit Wiegand (Signals: DATA1, DATA0 and CLOCK),
- Output signal in open collectors (pull up of 2.2K in +5V) 26-bit hexadecimal output format.

The frame is made of 26-bit and built as follow:

- First parity: 1-bit – even parity for the first 12-bit,
- User Code: 3 half of a byte represent the code entered.
Each byte is transferred from bit 7 to bit 0,
- Second parity: 1-bit – odd parity for the last 12-bit.

Bit 1	Bit 2 ... bit 25	Bit 26
Even parity on bit 2...bit13	Data (24 bits)	Odd parity on bit 14...bit 25

		1	0000	0000	0001	0011	0111	0101	0
Decimal	4 Terms	Parity 1	0	0	1	3	7	5	Parity 2
	5 Terms		0	7	1	3	7	5	
	6 Terms		6	7	1	3	7	5	
Hexadecimal	4 Terms		0	0	0	5	5	F	
	5 Terms		0	1	1	6	C	F	
	6 Terms		0	A	3	E	8	F	

- **Parity 1:** «0» if the number of 1 in bit 2 to bit 13 is even, «1» if the number of 1 in bit 2 to bit 13 is odd.
- **Parity 2:** «0» if the number of 1 in bit 14 to bit 25 is odd, «1» if the number of 1 in bit 14 to bit 25 is even.

11] ARK 8 BITS OUTPUT FORMAT

Keypad input	Hexadecimal	Binary Datas
0	F0	11110000
1	E1	11100001
2	D2	11010010
3	C3	11000011
4	B4	10110100
5	A5	10100101
6	96	10010110
7	87	10000111
8	78	01111000
9	69	01101001
* ou A	5A	01011010
# ou B	4B	01001011

GALEOW

Illuminated keypad - Wiegand

11] STANDARD FORMAT

This format is owned by Standard. This format is compatible with other Standard products. (Contact us)

12] ISO 7811 TRACK 2 FORMAT

SS	Characters	ES	LRC
-----------	-------------------	-----------	------------

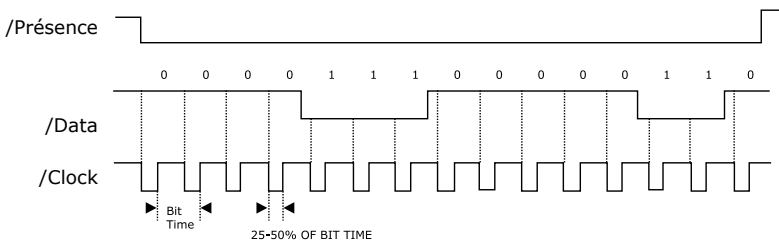
SS = start sentinel > Hex B

ES = end sentinel > Hex F

LRC = Ou Exclusif de tous les caractères de la trame (including SS and ES)

The code length is set at 8 digits:

- In 4 digits > 00001234
- In 5-digits > 00012345
- In 6-digits > 00123456



Each digit is made of 5 bits: 4 bits data + 1 bit parity

Characters	B4	B3	B2	B1	Parity
0	0	0	0	0	1
1	0	0	0	1	0
2	0	0	1	0	0
3	0	0	1	1	1
4	0	1	0	0	0
5	0	1	0	1	1
6	0	1	1	0	1
7	0	1	1	1	0
8	1	0	0	0	0
9	1	0	0	1	1
A	1	0	1	0	1
B = SS	1	0	1	1	0
C	1	1	0	0	1
D = FD	1	1	0	1	0
E	1	1	1	0	0
F = ES	1	1	1	1	1

Reference : G0301EN0266V09
Extranet : EXE-CDVI_IM GALEOW CMYK A5 EN 01



CDVI Group

FRANCE (Headquarter/Siège social)
Phone: +33 (0)1 48 91 01 02
Fax: +33 (0)1 48 91 21 21

CDVI

FRANCE + EXPORT
Phone: +33 (0)1 48 91 01 02
Fax: +33 (0)1 48 91 21 21

CDVI AMERICAS

[CANADA - USA]
Phone: +1 (450) 682 7945
Fax: +1 (450) 682 9590

CDVI BENELUX

[BELGIUM - NETHERLAND - LUXEMBOURG]
Phone: +32 (0) 56 73 93 00
Fax: +32 (0) 56 73 93 05

CDVI

TAIWAN
Phone: +886 (0)42471 2188
Fax: +886 (0)42471 2131

CDVI

SUISSE
Phone: +41 (0)21 882 18 41
Fax: +41 (0)21 882 18 42

CDVI

CHINA
Phone: +86 (0)10 62414516
Fax: +86 (0)10 62414519

CDVI IBÉRICA

[SPAIN - PORTUGAL]
Phone: +34 (0)935 390 966
Fax: +34 (0)935 390 970

CDVI

ITALIA
Phone: +39 0331 97 38 08
Fax: +39 0331 97 39 70

CDVI

MAROC
Phone: +212 (0)5 22 48 09 40
Fax: +212 (0)5 22 48 34 69

CDVI SWEDEN

[SWEDEN - DENMARK - NORWAY - FINLAND]
Phone: +46 (0)31 760 19 30
Fax: +46 (0)31 748 09 30

CDVI UK

[UNITED KINGDOM - IRELAND]
Phone: +44 (0)1628 531300
Fax: +44 (0)1628 531003

DIGIT

FRANCE
Phone: +33 (0)1 41 71 06 85
Fax: +33 (0)1 41 71 06 86

All the information contained within this document (pictures, drawing, features, specifications and dimensions) could be perceptibly different and can be changed without prior notice.

The installer's choice
cdvigroup.com