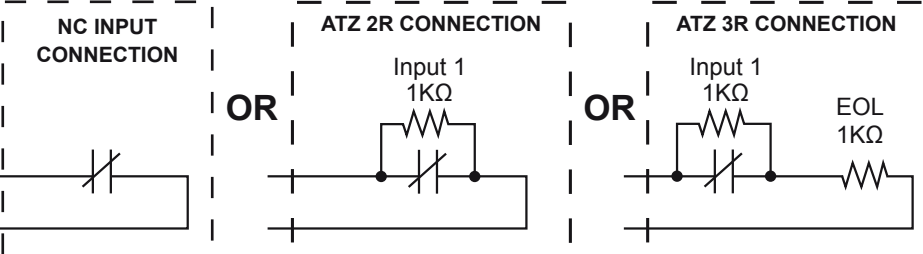


**⚠** The 2-Door expansion module (CA-A470-A), does not support zone doubling.



### JUMPER SETTINGS

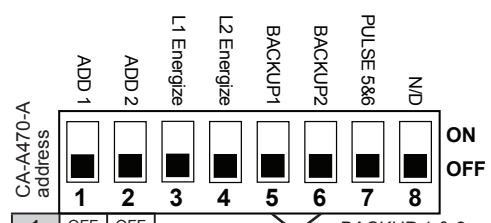
**1 BATTERY CHARGING**  
Charging the battery at 350mA (jumper ON) takes longer, but consumes less power. Charging the battery at 700mA (jumper OFF) takes less time, but consumes more power.

**2 HIGH/LOW BIAS**  
Place the A+ and B- jumpers on LOW only if the 2-Door Expansion Module is at the beginning (Start Point) of the E-bus Network. Otherwise, place the A+ and B- jumpers on HIGH

**3 EOL**  
Place the EOL jumper ON if the 2-Door Expansion Module is at the Start Point or at the End Point of the E-bus Network. Otherwise, place the EOL jumper OFF.

### DIP SWITCH SETTINGS

**4** ADD1 and ADD2 determine the 2-Door Expansion Module's address, regardless of the order that they are connected to the controller.



**5** BACKUP 1 & 2 determine what the CA-A470-A will do in stand-alone mode

**CDV Group**  
TECHNICAL SUPPORT  
**CDV Americas**  
Tel: (450) 682-7945 • Toll free: (866) 610-0102  
Ext: 223  
www.cdvamericas.com

### SPECIFICATIONS

Outputs: 6 open collector, 25mA Sink  
Aux. Current: 500mA (max.)  
Battery: low battery = 10.2VDC  
low battery restore = 12.2VDC  
low battery cut-off = 8.5VDC  
Operating temp.: 5°C to 55°C (41°F to 133°F)  
Maximum 3 CA-A470-A modules per CT-V900-A