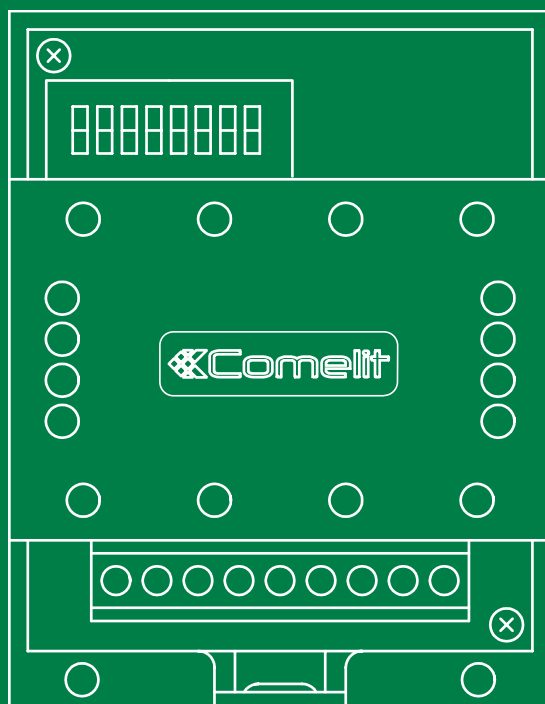


EN

TECHNICAL  
MANUAL



Digital actuator relay accessory  
Art. 1256

 **Comelit**<sup>®</sup>  
Passion. Technology. Design.

# Table of contents



Description.....	3
Technical specifications .....	3
Connections.....	4
1256 connections .....	4
Operation and Programming.....	5
A) Call repetition function.....	5
B) Activation function on switchboard call pushbutton .....	5
C) External unit light function / Stair light function.....	5
D) Secondary door lock release function (without external unit) .....	5
E) Activation function on Actuator pushbutton.....	6
F) Activation function on Actuator with code pushbutton.	
The function may NOT be used in Simplebus Kit systems .....	6
System performance and layouts .....	6

## Description

Article 1256 is an intelligent device for controlling a 10A relay (installed) for general uses. It can be used 2-wire Kits, "Building Kit" (exclusively 2-wire), Simplebus TOP systems.

Fit a max. of 10 actuator relay modules art. 1256 on the outgoing bus line to an audio or audio/video external unit. Fit a maximum of 30 actuator relay modules art. 1256 on the outgoing bus line to a mixer/power supply unit art. 4888, 4888C.

**To use the actuator relay module in 2-wire Kit systems, "Building Kit" entry phone systems (2 pure wires), Simplebus TOP systems after Art. 4888, 4888C: move jumper JP2, JP3, JP4 to position 2**

## Technical specifications

### GENERAL INFO

Product height (mm)	83
Product width (mm)	66
Product depth (mm)	37
Operating temperature (°C)	0÷30

### MOUNTING/INSTALLATION

Wall-mounted	No
DIN rail mounted	Yes
DIN modules (no.)	4

### AUDIO/VIDEO SPECIFICATIONS

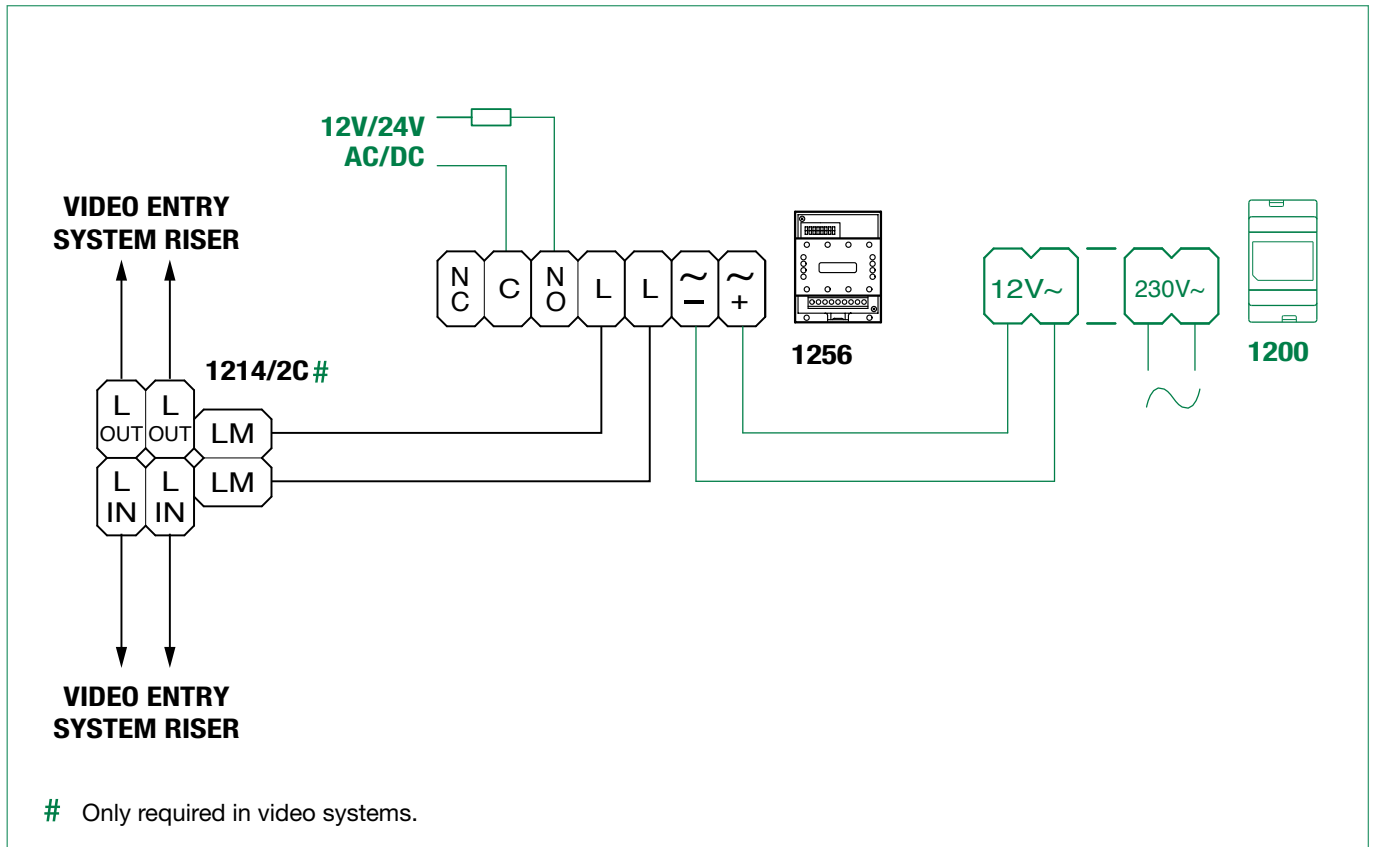
Audio system	Yes
Audio/video system	Yes

### ELECTRICAL SPECIFICATIONS

Maximum current absorption (mA)	50
---------------------------------	----

# Connections

## 1256 connections

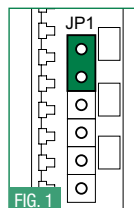


# Operation and Programming

Art. 1256 offers the following six functions, depending on the position of jumper JP1:

## A) Call repetition function

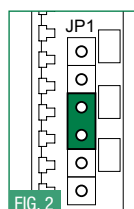
JP1 as illustrated in Fig. 1



The relay is operated by closing the C.NO. contact in response to a call from the switchboard, external unit or landing; this happens only if the user code for which you wish to repeat the call is set using the DIP-switch (e.g. to activate lights, ringtones, paging function, CCTV alarm contacts, etc.). On receipt of a call from the external unit or the landing, single closure of the relay takes place. In response to a call from the switchboard, the relay closes twice. Intercom calls are not repeated. The actuator relay module can also be used alone, if you want to close the C.NO. contact rather than repeat the call to an apartment when the external unit calls the user code set on art. 1256. The relay closure time is set to approximately 2 sec. To set the user code by means of a DIP-switch, see [“addressing table”](#).

## B) Activation function on switchboard call pushbutton

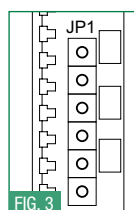
JP1 as illustrated in Fig. 2



For use only with systems not equipped with switchboard art. 1998/A. The relay is operated by closing the C.NO. contact in response to a switchboard call from an entry phone or video entry phone (e.g. to activate the following independently, using a specific command: lights, CCTV alarm contacts, driveway gates, entrances without external units or other devices). The relay closure time can be programmed using a DIP-switch (see [table A](#)). The function can be used only when the system is free.

## C) External unit light function / Stair light function

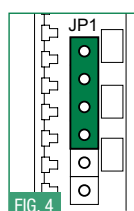
JP1 as illustrated in Fig. 3



The relay is operated by closing the C.NO. contact in response to a call from an external unit to any address, on internal ignition from a video entry phone (e.g. to automatically activate lights, CCTV alarm contacts, etc.). The relay closure time can be programmed using a DIP-switch (see [table A](#)).

## D) Secondary door lock release function (without external unit)

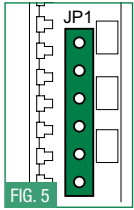
JP1 as illustrated in Fig. 4



The relay is activated when the door lock release pushbutton is pressed, if the user code of the entry phone or video entry phone from which the command is sent is within the range defined using DIP-switches - see [table B](#) (e.g. to activate a second door lock release using the door lock release command for entrances without an external unit). The relay closure time is set to approximately 2 sec.

## E) Activation function on Actuator pushbutton

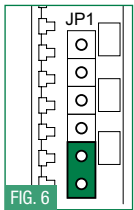
JP1 as illustrated in Fig. 5



The relay is operated by closing the C.NO. contact in response to a Generic actuator call from an entry phone or video entry phone (e.g. to activate the following independently, using a specific command: lights, CCTV alarm contacts, driveway gates, entrances without external units or other devices). The relay closure time can be programmed using a DIP-switch (see [table A](#)). The function can be used at all times except when a conversation is in progress from an entry phone or video entry phone other than your own. All art. 1256 modules set for use with this function are activated simultaneously when the pushbutton on the internal unit is pressed.

## F) Activation function on Actuator with code pushbutton. The function may NOT be used in Simplebus Kit systems

JP1 as illustrated in Fig. 6



The relay is operated by closing the C.NO. contact if the pushbutton pressed on the entry phone or video entry phone has been programmed (using the hand-held programmer art. 1251/A) to send the actuator call with the code of the actuator in question (e.g. to activate the following independently, using a specific command: lights, CCTV alarm contacts, driveway gates, entrances without external units or other devices). The closure time of the relay is fixed at 2 sec. the function can be used at all times, except when a conversation is in progress from an entry phone or video entry phone other than your own. To set the user code by means of a DIP-switch, see [“addressing table”](#).

TAB. A programming relay closure time for functions B, C and E									
DIP switches ON	ALL	1	2	3	4	5	6	7	8
Relay closure time	*	1''	2''	4''	8''	16''	32''	1' 5''	2' 10''

\* The relay for art. 1256 operates in **BISTABLE mode**, changing its status at every command; if the power supply is cut off, it returns to the C.NO. position and remains there, even after the power is restored.

**Bistable mode is available for products with a revision index equal to or greater than 003.**

TAB. B programming code Range for function D								
DIP switches ON	1	2	3	4	5	6	7	8
Enabled codes	1 ÷ 30	31 ÷ 60	61 ÷ 90	91 ÷ 120	121 ÷ 150	151 ÷ 180	181 ÷ 210	211 ÷ 240

## System performance and layouts

For further information of system performance and to view installation layouts, click on the type of system that best meets your needs:

- [Audio/video kit](#) for the creation of audio-video systems for *individual residences*.
- [Building Kit audio/video system](#) for the creation of audio-video systems for *small apartment blocks*.
- [SBTOP audio/video system](#) for the creation of audio-video systems for *residential complexes*.
- [SB1 audio system](#) for the creation of audio systems for *residential complexes*.
- [SB2 audio system](#) for the creation of audio systems for *residential complexes*.



CERTIFIED MANAGEMENT SYSTEMS



[www.comelitgroup.com](http://www.comelitgroup.com)

Via Don Arrigoni, 5 - 24020 Rovetta (BG) - Italy

