



QUICK START GUIDE



NWAVBSA1

EXTERNAL DUAL POLARIZATION
VARIABLE BEAM SECTOR ANTENNA

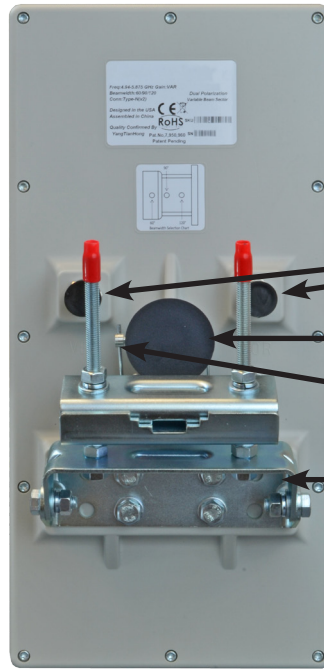
**This manual serves the following
ComNet Model Number:
NWAVBSA1**

Thank you for purchasing NetWave® from ComNet. This quick start guide is designed to walk you through installation of the NWAVBSA1 Variable Beam Sector Antenna in an application using the NetWave® NW(1,2)R2 industrially hardened dual radio wireless ethernet device.

FIGURE 1 - NW1/NW2 INDUSTRIAL WIRELESS ETHERNET LINK



FRONT



BACK

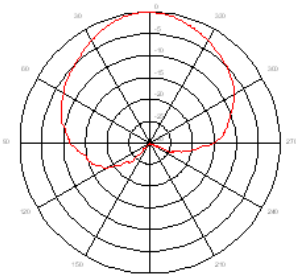
N-Type Connectors
(shown with dust caps)

Beamwidth Adjuster

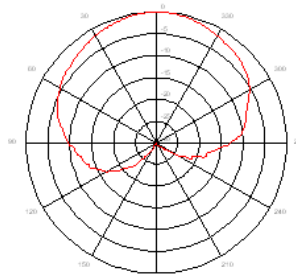
Locking Pin

Mounting Bracket

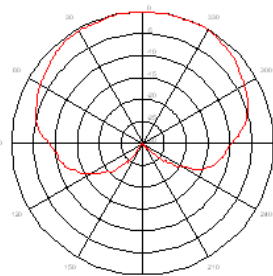
FIGURE 2 - RF PATTERNS



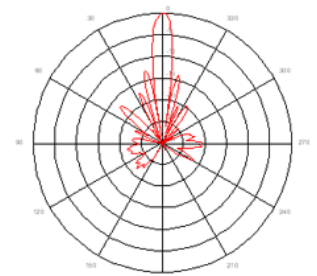
60° Horizontal



90° Horizontal



120° Horizontal

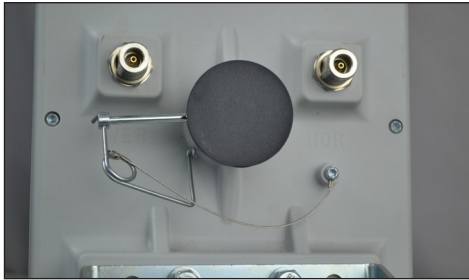


Vertical, Typical

FIGURE 3 - INSTALLATION INSTRUCTIONS

Step 1.

Unpack the hardware from the box. The pre-assembled mount is designed to support poles up to 3" in diameter. Remove the bracket and screws from the mount in order to more easily reach the N-type connectors and black Rear Tube.



Step 2.

Remove the Locking Pin from the black Beamwidth Adjuster by unclipping the right side first, sliding the pin to the left until it exits the gray Back Housing and hangs free (the wire attached to the Back Housing will prevent loss).



Step 3.

Set the depth of the Adjuster according to the desired beamwidth. Align the holes in the Beamwidth Adjuster with the gray Back Housing.

60° - Beamwidth Adjuster set to third hole position.

90° - Beamwidth Adjuster set to middle hole position.

120° - Beamwidth Adjuster set to first hole position (pressed all the way in).

Note: If two Beamwidth Adjusters are being used, both should be set the same for accurate beam width.



Step 4.

Replace the Locking Pin through the Back Housing and Beamwidth Adjuster and position the clip on the right side to secure it.



Step 5.

Connect both included cables from the N-type connector on the NetWave® NW(1,2)R2 external antenna connector to the corresponding connector on the NWAVBSA1.

FIGURE 4 - POLE MOUNT INSTALLATION GUIDE

The pole mount bracket is installed at time of shipment. Unfold the bracket assembly away from the body of the antenna to allow access to the connectors and beamwidth selector.

Mount antenna to pole via the bracket, noting the orientation of the hardware in photos below. Adjust the vertical tilt of the antenna and tighten all bolts to secure.

The included Mounting kit is designed to support poles from 2.0in (5cm) to 2.75in (7cm) in diameter.

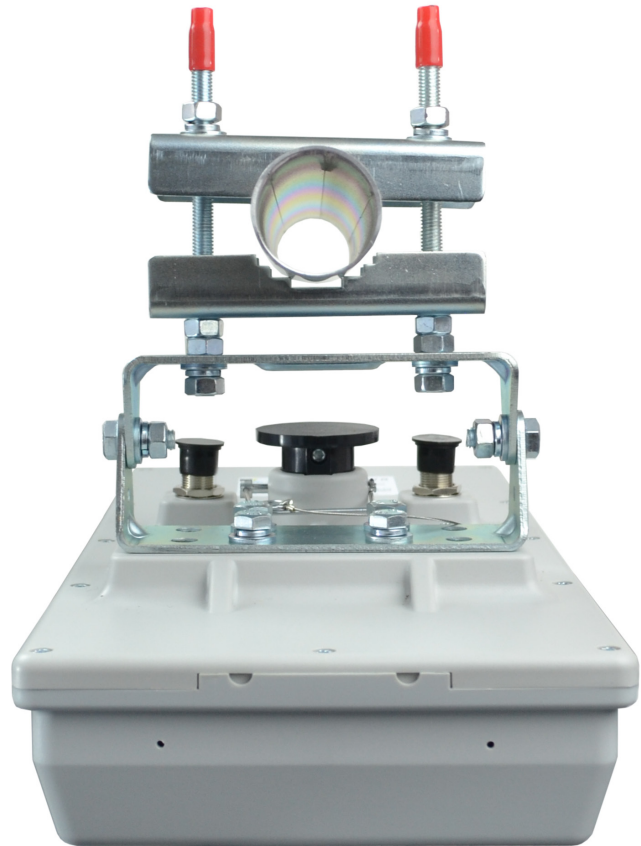


FIGURE 5 - REDUNDANT RING TOPOLOGY (SHOWN WITH POE CAMERAS)

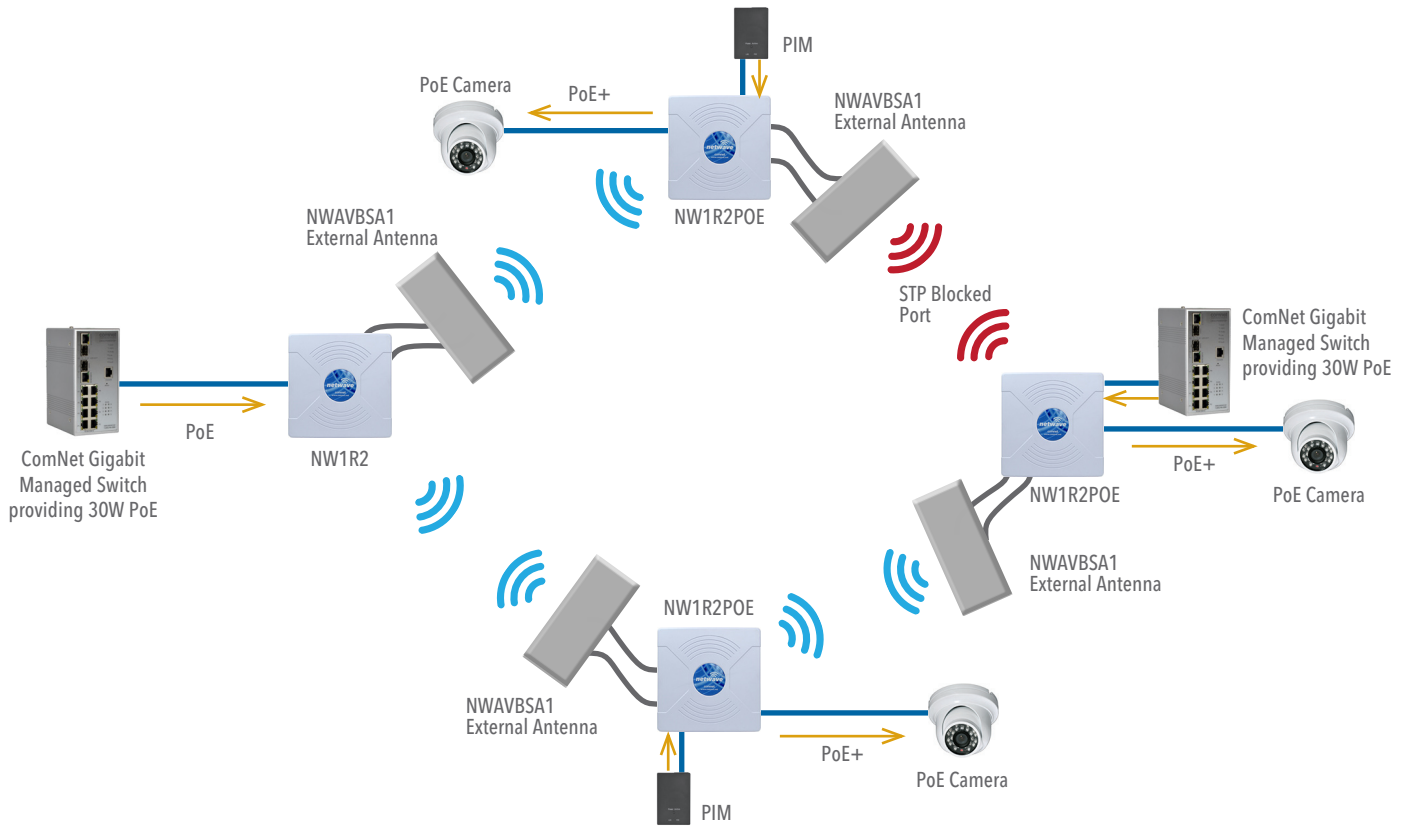
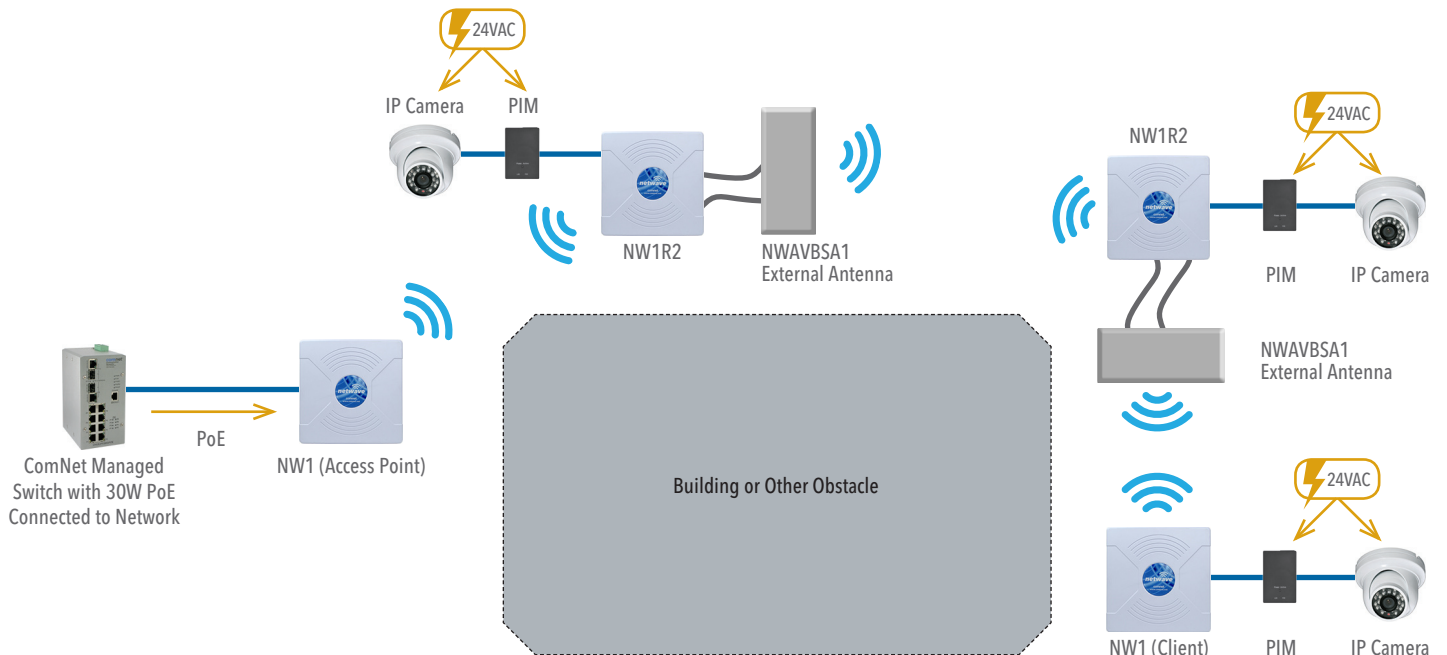


FIGURE 6 - DROP-AND-REPEAT TOPOLOGY (SHOWN WITH 24VAC POWERED CAMERAS)



Need Additional Assistance?

Visit our website <http://www.comnet.net> or contact Comnet tech support:

Tel: (203) 796-5300

Toll free: (888) 678-9427

Email: techsupport@comnet.net

Additional Technical support contact details can be found at:

<http://www.comnet.net/services/technical-support.html>

Or Visit our pre-sales design center:

<http://www.comnet.net/services/design-center.html>

Or our customer care:

<http://www.comnet.net/services/customer-care.html>

Additional Downloads

Datasheets, Installation manuals and other product documentation can be found at:

<http://www.comnet.net/comnet-products/ethernet/wireless/>



**3 CORPORATE DRIVE | DANBURY, CT 06810 | USA
T: 203.796.5300 | F: 203.796.5303 | TECH SUPPORT: 1.888.678.9427 | INFO@COMNET.NET**

**8 TURNBERRY PARK ROAD | GILDERSOME | MORLEY | LEEDS, UK LS27 7LE
T: +44 (0)113 307 6400 | F: +44 (0)113 253 7462 | INFO-EUROPE@COMNET.NET**