

Hybrid DVR (Digital Video Recorder) Quick Start Guide

Please read these instructions carefully and store them in a cool dry place for future reference. All the examples and pictures used here are for reference only. There may be several technically incorrect diagrams or printing errors in this manual. Any updated information will be added to successive versions of this manual. The contents of this manual are subject to change without notice.

1. Notes

- Please read these instructions carefully and store them in a cool dry place for future reference
- All the examples and pictures used here are for reference only
- The contents of this manual are subject to change without notice.
- This device should be operated only from the type of power source indicated on the labeling.
- Please verify that the voltage used matches what is indicated on the labeling.

2. Packing Check

Please inspect the device and accessories after purchasing the device. If there are any visible damages, shortages or defects, please contact your dealer or distributor immediately.

3. HDD Installation

This model of recorder supports 8 internal SATA hard drives. The following pictures and diagrams of the HDD installation are for reference only and there might be slight differences in the actual hardware received. Please make sure that the device is powered off before the installation.

- ① Remove the chassis cover and loosen the screws to remove the two HDD mounting bars.
- ② Align the HDDs to be installed to their proper mounting holes and secure the HDDs onto the mounting bar with included screws.



- ③ Re-install the two HDD mounting bars with HDDs attached and make sure to tighten mounting bar screws.
- ④ Connect power and data cables to all HDDs installed.

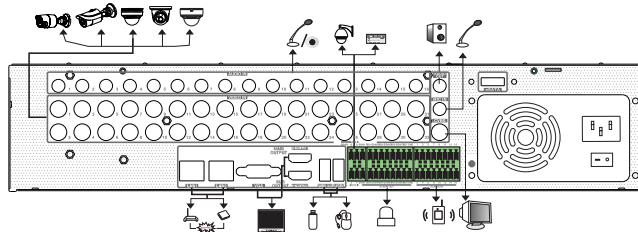


- ⑤ Replace chassis cover and make sure to secure it with the included screws.

Tip: Before securing chassis cover, double-check all power and data connections to HDDs and mainboard.

4. Rear Panel Instructions

Diagram of rear panels below are for reference only.



Name	Description
VGA	Connect to monitor
VIDEO IN	Connectors for Video input
LAN	Network Port
USB	Connect to USB storage device or USB mouse
ALARM IN	Alarm input for connecting sensor
ALARM OUT	Relay output; connect to external alarm
GND	Ground
P/Z	Connect to speed dome. Y is TX +, z is TX -
K/B	Connect to keyboard. A is TX +, B is TX -
AUDIO OUT	Audio output
AUDIO IN	Audio input
e-SATA	Connect to HDD with e-SATA interface
HDMI 1	Connect to high definition display device
HDMI 2	Connect to high definition display device

5. Startup & Shutdown

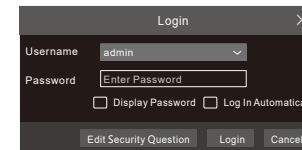
Startup

- ① Connect recorder to monitor with VGA or HDMI cable and power on device.
- ② The device will boot and the power indicator will display blue.
- ③ After completely booting, a Startup Wizard should appear on the screen.

Shutdown

- ① Click on "Start" button in lower-left corner of the screen and then select "Shutdown" icon. This will bring up a shutdown window.
- ② From within this new window, choose "Shutdown". After recorder has completely shut down, you can disconnect the power.

6. Login



The default username is **admin** and the default password is **123456**. You must configure the wizard if you start the DVR for the first time and you may change the password when you configure the wizard for the first time. You can skip the settings of wizard next time. Click "Start" and select "Login". This will take you to see a login box. Enter default username and password you set and you can see the live image.

7. Analog Camera Connection

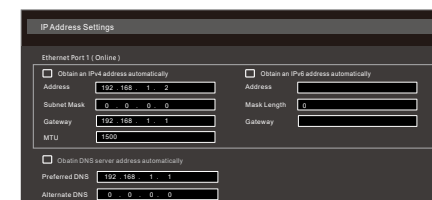
First connect the camera to the DVR. Then go to *Start>Settings>Camera>Manage Camera>Camera Signal* to checkmark the video mode. The actual signals input shall correspond to the video mode. Please refer to User Manual for details.

8. Network Configuration & Add IP Camera

After you finish adding your analog cameras, you can see their live video streams through the monitor connected to the DVR. The following instructions will mainly introduce how to add the IP cameras via LAN/WAN.

LAN

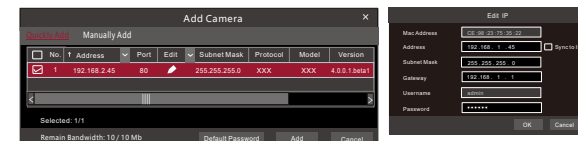
- ① Most networks will be configured for assigning an IP address automatically through the router. After connecting this recorder to your network, navigate to *Start>Settings>Network>TCP/IP*. If using DHCP, make sure that the option of "Obtain an IPv4 address automatically" is selected. For manual IP address, make sure to uncheck the "Obtain an IPv4 address automatically" option and enter in the proper Address, Subnet Mask and Gateway information.



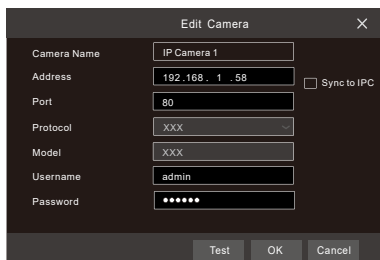
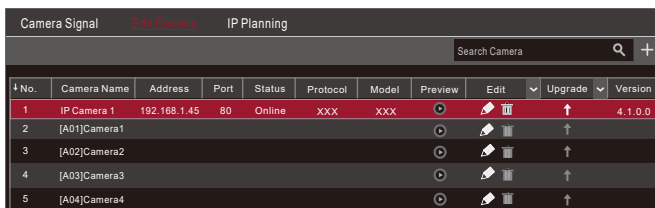
- ② To change the ports used by the recorder, navigate to *Start>Settings>Network>Port*. You can enter a different HTTP port (default value is 80) and Server port (default port is 6036).

- ③ Click "Apply" to save the settings.

- ④ Navigate to *Start>Settings>Camera>Add Camera*. The DVR will search your local network for cameras and list them. AVYCON and ONVIF cameras will be supported automatically. If any AVYCON IP cameras are found, but do not have an IP address that matches your local network, you can click on the Edit button for each camera and modify the IP address directly from the DVR.



- Check each camera you want to add and then click "Add" button. The DVR will automatically add the camera(s) selected and return to "Edit Camera" interface. "Online" status means the device connected successfully and you will see the live image. You may select the added device and click button to modify channel, IP address, etc.



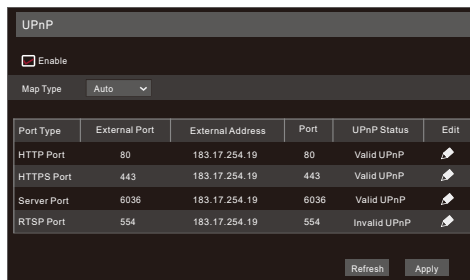
WAN

If your DVR has been connected correctly to your local network and you can confirm access to the internet, you can also add remote WAN IP cameras. To add a camera, either click on the button on a blank channel or navigate to *Start>Settings>Camera* and click on "Add Camera". Choose "Manually Add". Enter the WAN IP address, server port, username and password of the remote IP camera. You can test the connection by clicking on the "Test" button and if camera tests successfully you can add that camera.

9. UPnP

You can take advantage of your router's UPnP function, which can automatically configure port forwarding.

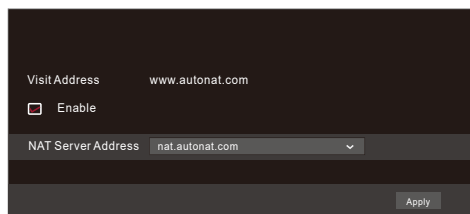
- Navigate to *Start>Settings>Network>UPnP*, and enable UPnP and then click "Apply" button to save.
- Confirm that the UPnP function is enabled in your router.
- Click "Refresh" button to refresh the UPnP status. If the UPnP status displays "Invalid UPnP" after refreshing it for several times, they may be a port conflict. Please change the mapping type to "Manual" and then click to edit the port until the UPnP status changes to "valid UPnP"



10. NAT

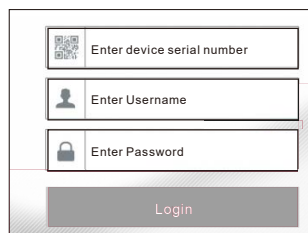
NAT Settings

- Confirm that DVR is powered and connected to the Internet.
- Navigate to *Start>Settings>Network>TCP/IP*. Confirm your IP address settings (Automatic or Manual)
- Set the preferred or alternative DNS Server. Click "Apply" to save the parameters. Default values are 8.8.8.8 and 4.2.2.2
- Next, navigate to *Start>Settings>Network>NAT* tab. Enable NAT and then click apply. Wait up to one minute before testing remote connection using the QR code.



NAT Access

After finishing configuring the NAT settings, you can enter www.autonat.com in the address bar of your browser. If this is the first time visiting the site, you may have to install some ActiveX plugins. After successfully installing ActiveX, you should see the login screen and you should be able to enter in your credentials.



QR Code: Click on the menu bar at the bottom of the live interface to check the QR code or go to *Start>Settings>Network>Network Status* to check the QR code (12 digits) of the DVR.

Username: The username of the DVR. The default username is admin.

Password: The password of the DVR. The password is set by yourself when you configure the wizard for the first time.

11. Manual Recording

Before recording, confirm that a HDD has been installed and formatted. From the live interface you can access the menu toolbar. Click button to start recording. Click it again to stop recording. You can also click to check the status of the recording.



12. Playback

Instant Playback

Click "Instant Playback" from the right-click menu of any camera's preview window to select the amount of time you want to preview. When playback starts you can also click on the progress bar to change times.

General Playback

Click on the tool bar at the bottom of the live preview interface or click *Start>Playback* to enter the playback interface as shown below. The system will load up the current cameras viewed or you can manually select which cameras you want to view. Click in the playback window to bring up the "Add Camera" window. Select the cameras you want to view playback on and then click "Add" to add camera.

