

# Polycarbonate Enclosures

*Protect electronics in wireless and also extreme conditions!*

- See UL Listing and NEMA ratings in each category below
- Mounting systems which allow hinges to be left or right
- Doors are both pad-lockable and screw-down
- Lock and Locking Handle options available
- Back panels available for all models
- "BW-BPAK" accessory to stack multiple panels or adjust panel height
- Pole-Mount Kits available for all models
- DIN Rails available for all models
- Heaters available for all models
- **Add a "C" at the end of any of these part numbers for a clear door**



Safely use wireless transmitters, receivers, and antennae inside!

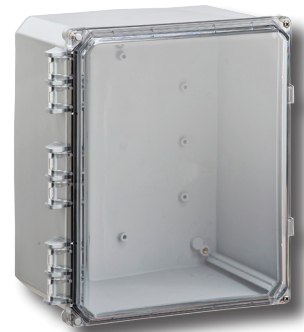
## SL Series (stainless steel latches):

UL Listed and NEMA 2, 3, 3R, 3S, 4, 4X, 5, 12, 13  
Air/Dust/Water-Tight Enclosures which will never rust

- BW-SL864 is 8"H x 6"W x 4"D
- BW-SL1084 is 10"H x 8"W x 4"D
- BW-SL12104 is 12"H x 10"W x 4"D
- BW-SL12106 is 12"H x 10"W x 6"D
- BW-SL14126 is 14"H x 12"W x 6"D
- BW-SL16147 is 16"H x 14"W x 7"D
- BW-SL181610 is 18"H x 16"W x 10"D
- **NEW** BW-20168 is 20"H x 16"W x 8"D
- BW-242410 is 24"H x 24"W x 10"D



**BW-FC181610**



**BW-SL12106C**

## FC Series (fan-ventilated):

NEMA 2, 3, 3R with UL Recognized Fans  
NEMA 3R Outdoor Rated Enclosures which will never rust

- BW-FC16147 is 16"H x 14"W x 7"D
- BW-FC181610 is 18"H x 16"W x 10"D
- **NEW** BW-FC20168 is 20"H x 16"W x 8"D
- BW-FC242410 is 24"H x 24"W x 10"D
- BW-FC242410-3P is 24"H x 24"W x 10"D with 3-point locking handle



**BW-242410ACHT**

## ACE and ACHT Series (air-conditioned):

NEMA 2, 3, 3R, 3S, 4 with UL Listed, NEMA 4 Air-Conditioners  
Air/Dust/Water-Tight Enclosures which will never rust

- BW-242410ACE is 24"H x 24"W x 10"D with an 800 BTU AC unit
- BW-242410ACE-3P includes a 3-point locking handle
- BW-242410ACHT is 24"H x 24"W x 10"D with an AC & heat
- BW-242410ACHT-3P includes a 3-point locking handle

**Don't see the enclosure you need?  
Call or e-mail us and we'll be happy to help!**



# Polycarbonate Enclosures - Submersible

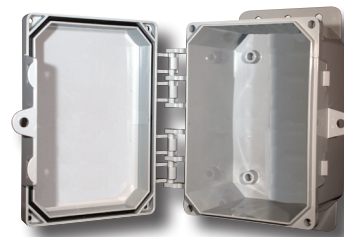
## NEMA 6/6P SUBMERSIBLE Models

- Mounting systems which allow hinges to be left or right
- Snap-down doors are also pad-lockable
- Back panels available for all models
- "BW-BPAK" accessory to stack multiple panels or adjust panel height
- Pole-Mount Kits available for all models
- DIN Rails available for all models
- Heaters available for all models
- **Add a "C" at the end of any of these part numbers for a clear door**

## UL Listed L Series (snap latches):

NEMA 2, 3, 3R, 3S, 4, 4X, 5, 12, 6/6P Marine use (submersible)  
Air/Dust/Water-Tight Enclosures even while submerged

- **NEW** BW-L444 is 4"H x 4"W x 4"D
- BW-L663 is 6"H x 6"W x 3"D
- BW-L863 is 8"H x 6"W x 3"D
- BW-L982 is 9"H x 8"W x 2"D
- BW-L1086 is 10"H x 8"W x 6"D



BW-L863



BW-L982

Don't see the enclosure you need?  
Call or e-mail us and we'll be happy to help!

Other colors, graphic screening,  
and customization are available.



Indoor & Outdoor Electrical Enclosures | Drive-Alert Vehicle Detection & Asset Protection Systems | Custom Fabrication

800-473-0213 ~ [info@mierproducts.com](mailto:info@mierproducts.com) ~ [www.mierproducts.com](http://www.mierproducts.com)