



This home owner did not want to trench cable, nor did she want to run wiring for hard-wired chimes to the three places in the house where she wanted alerts. Mier's Tech Support Team helped her choose the following Drive-Alert layout:

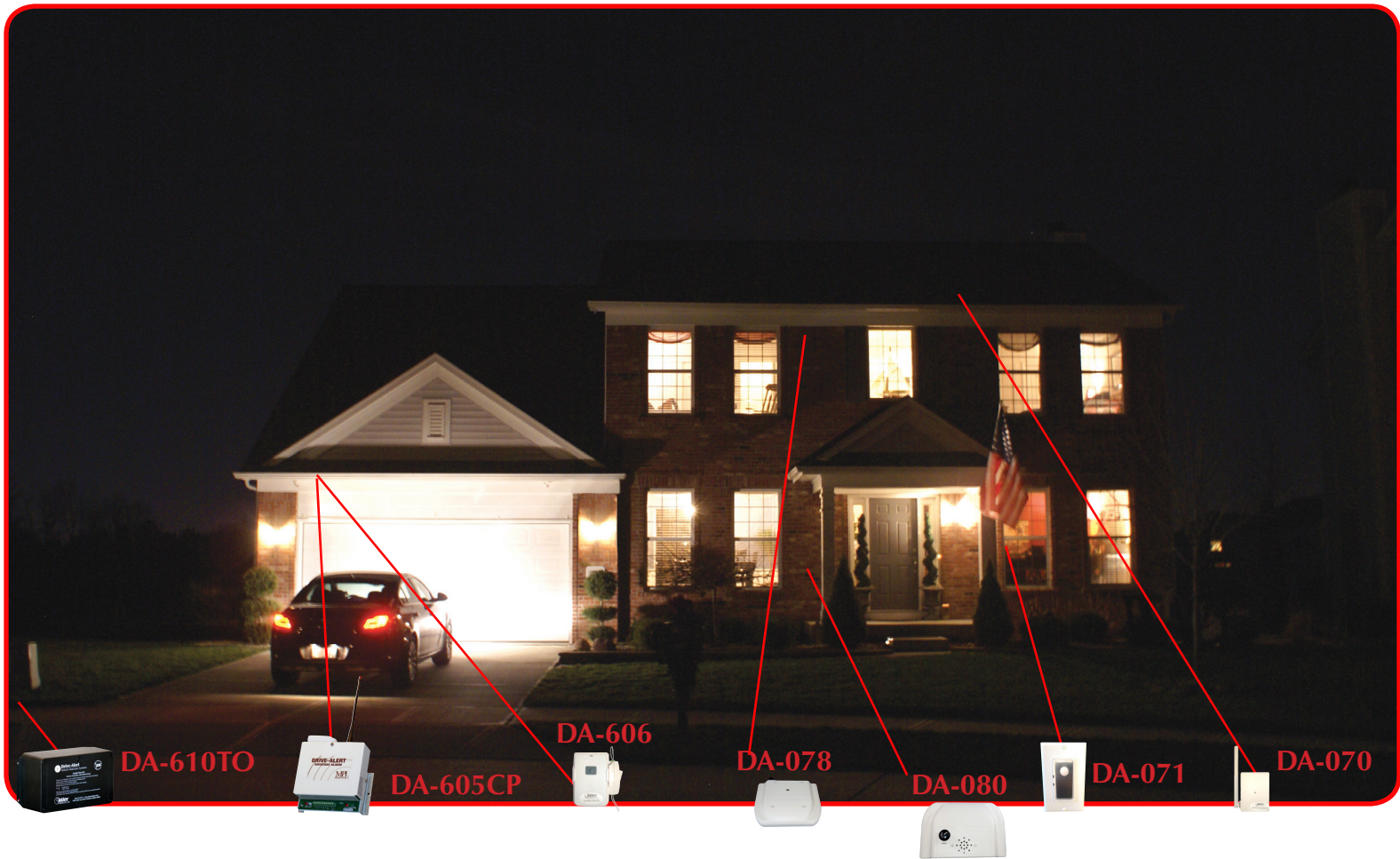
**Equipment:**

- \* One **DA-605P** Wireless Drive-Alert is a kit that includes:
  - One DA-605CP Wireless Control Panel/Receiver with extra contacts and a wireless chime transmitter
  - One DA-610TO Wireless Sensor/Transmitter
  - One DA-078 Wireless Plug-In Chime with volume control
- \* One **DA-ROCK1** Fake Rock Accessory to cover/hide the DA-610TO Sensor/Transmitter
- \* An additional **DA-078** Wireless Plug-In Chime with volume control
- \* One **DA-080** Wireless Portable Chime with volume control

- 1) The DA-610TO Sensor was placed two feet from the drive, making sure it wasn't near underground power-lines, and covered it with a DA-ROCK1.  
Note: This customer could have also chosen a DA-611TO Sensor/Transmitter, with the sensor buried next to the drive and the transmitter on the tree.
- 2) The DA-605CP Control Panel/Receiver is mounted out of the way in a mud-room off of the garage
- 3) The DA-078 and DA-080 chimes are placed conveniently around the home in this fashion:
  - \* A DA-078 Plug-in Chime is in the workshop/garage so they could hear the alert in that location
  - \* A DA-080 Portable Chime is in the kitchen so all first floor rooms hear the alert, *AND* it is available to take out on the back deck/pool
  - \* Another DA-078 Plug-In Chime is in the upstairs hallway so all upstairs bedrooms and bathrooms hear the alert

NOTE: You can use multiple wireless drive-alert control panels, sensors and accessories and in any combination! Many Mier hard-wired and wireless accessories and control panels can also work in combination with one another.





This home owner did not want to trench cable, nor run wires throughout the house. He wanted chimes in different areas, an outdoor light and a front room light to come on when a vehicle approached, and the ability to control the length of time those lights came on. Of course, he wanted everything hidden and out of site. Mier's Tech Support Team helped him with this lay-out:

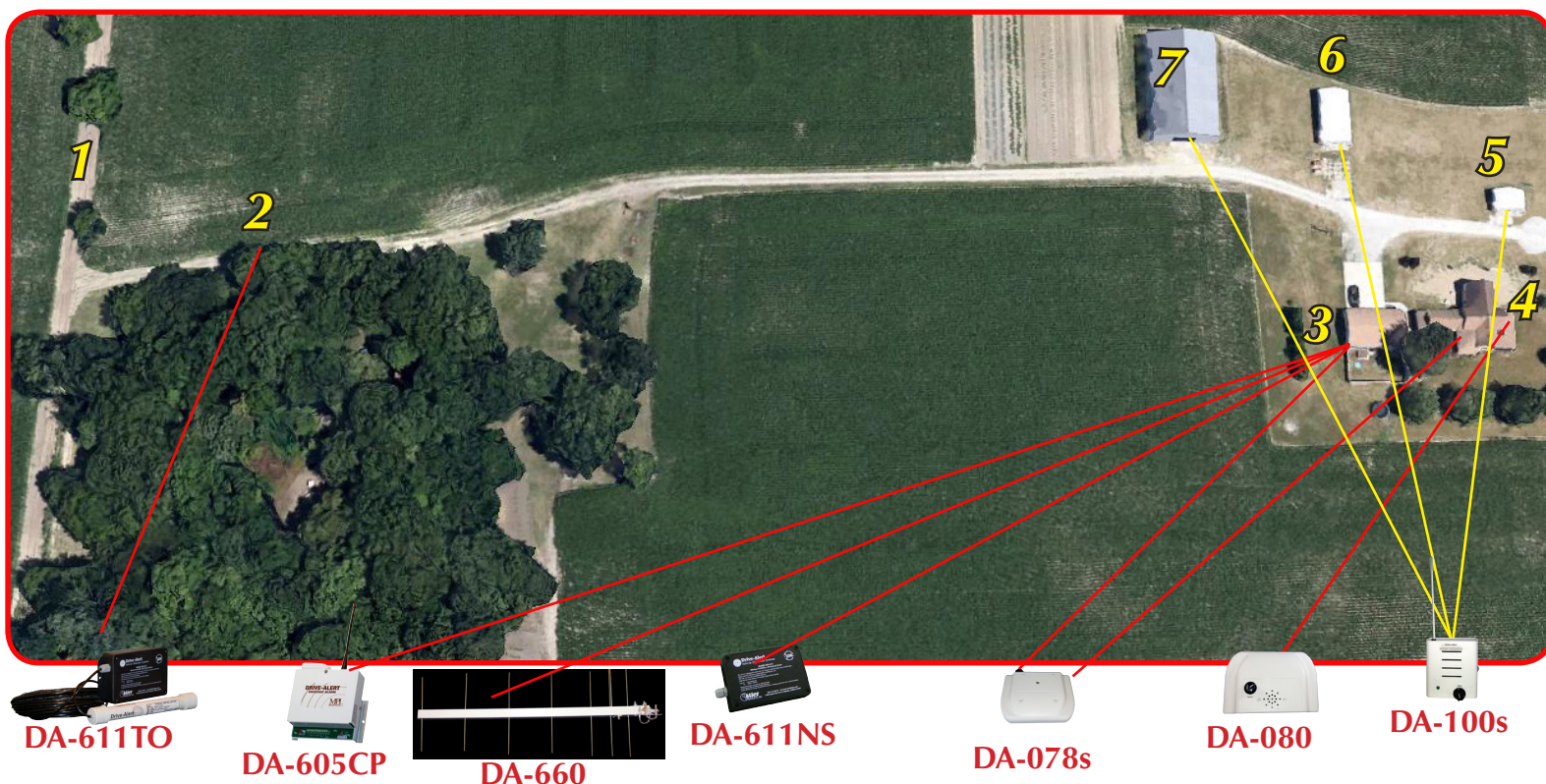
**Equipment:**

- \* A **DA-605P** Wireless Drive-Alert Kit includes: one DA-605CP Wireless Control Panel/Receiver with extra contacts and a wireless chime transmitter, one DA-610TO Wireless Sensor/transmitter, and one DA-078 Wireless Plug-in Chime with volume control
- \* A **DA-606LK** Wireless Light Kit includes: one DA-606 Light Timer Control, one DA-071 Light Switch, and one DA-072 Lamp Module
- \* A **DA-080** Portable Wireless Chime Accessory with volume control for the kitchen and to take out to the patio, pool and garden

- 1) The DA-610TO Sensor is two feet off of the drive, and not near any underground power-lines. A DA-611TO could have also been used.
- 2) The DA-605CP Control Panel/Receiver is mounted on the garage ceiling, and plugged into a spare plug located there for the garage door opener
- 3) The DA-080 Portable Chime is in the kitchen on the main floor, so it could also be used in the kitchen and on the back patio, pool and garden
- 4) The DA-078 Chime was placed upstairs, plugged into an outlet where it can be heard in all of the bedrooms
- 5) The DA-606 Timer Control is mounted next to the DA-605CP Control Panel on the ceiling of the garage
- 6) The DA-071 Wireless Light Switch is used to control the front porch light so it comes on when vehicles approach, and works manually too
- 7) The DA-072 Wireless Lamp Module is used with an upstairs lamp so it also comes on when vehicles approach, and work manually too

NOTE: You can use multiple wireless drive-alert control panels, sensors and accessories and in any combination! Many Mier hard-wired and wireless accessories and control panels can also work in combination with one another.



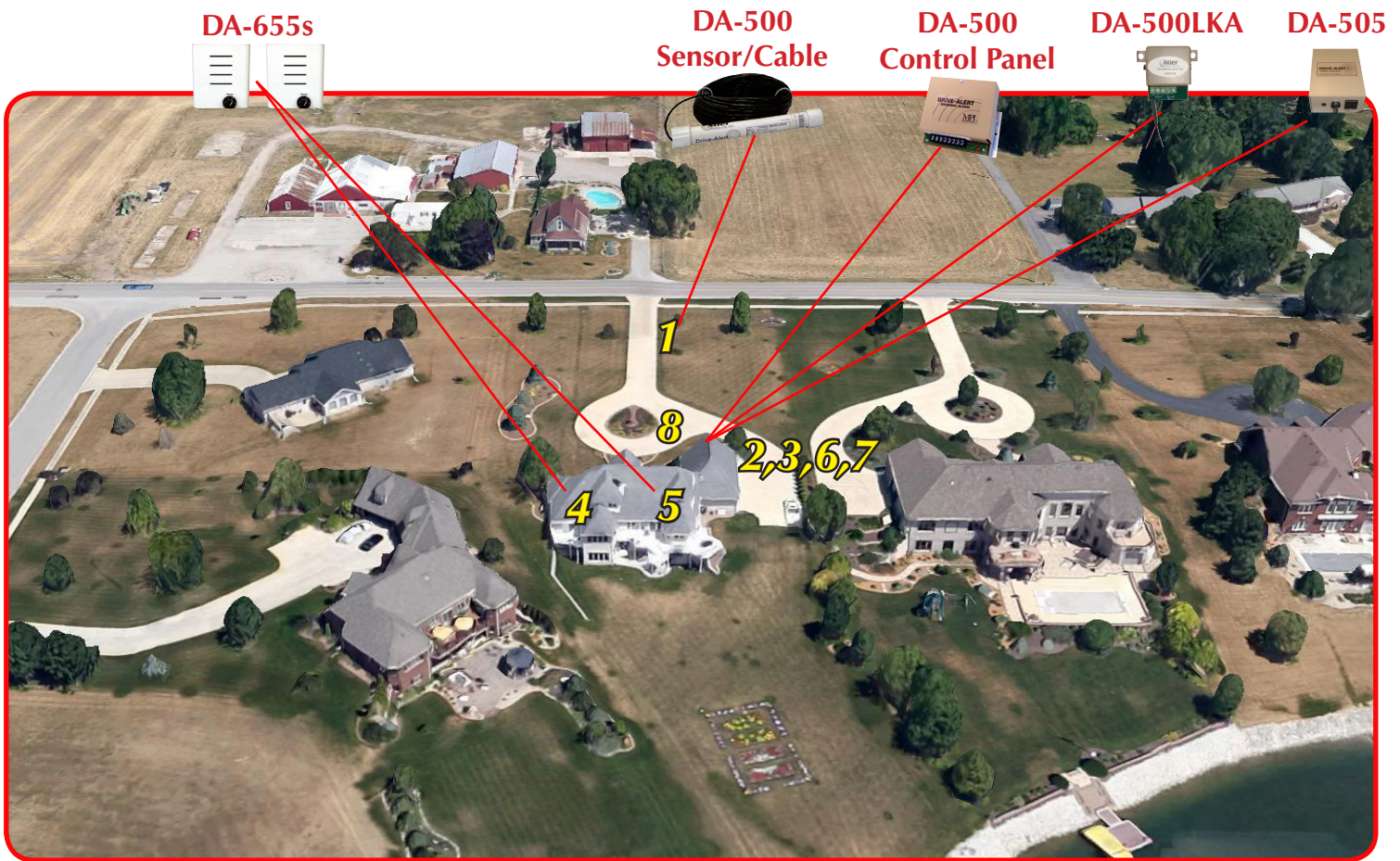


The Farmer has a long lane and wanted to be alerted to vehicles entering or leaving. He wanted alerts in his home, detached garage/work-shop, and also in three other buildings. Furthermore, he didn't want to use a standard DA-610TO Sensor/Transmitter because his trees are all 5 feet or more from the lane, and he didn't want to put up a post within two feet of the drive because he wanted a sensor that would be hidden. Mier's Tech Support Team put together this wireless long-range Drive-Alert system:

- 1) The County Road.
- 2) A Tree 60-feet away from the county road. A **DA-611TO** Sensor/Transmitter is located here so it will not catch tractor trailer traffic on the road, but will still catch any vehicles coming up the lane or exiting. The DA-611TO's Sensor and Cable are buried 10-inches deep in PVC pipe and runs to a tree 10-feet off the lane, then up to the DA-611TO's Transmitter Box mounted 5-feet off of the ground.
- 3) The Detached Garage and Work-shed, 1300-feet away from the road. A **DA-605CP** Control Panel/Receiver is mounted on a wall with a cable running up into the attic where a **DA-660** Reception Booster Antenna is hidden and mounted pointing towards the DA-611TO (#2). There is also a wireless **DA-078** Chime with volume control plugged into a wall outlet for an alert at this location. Finally, a **DA-611NS** Transmitter/Repeater is also attached to this DA-605CP to repeat the alert signal to receivers in the other buildings.
- 4) The Main House. Another wireless **DA-078** Chime with volume control is plugged into a wall outlet here, and a wireless **DA-080** Portable Chime with volume control is used for alerts in the kitchen, as well as carried outside for use on the deck.
- 5) An Equipment/Work Shed, 1500-feet from the road. A **DA-100CP** Receiver Chime with Volume Control is located here.
- 6) A Barn, 1290-feet from the road. Another **DA-100CP** Receiver Chime with Volume Control is located here.
- 7) A Barn, 1000-feet from the road. A third **DA-100CP** Receiver Chime with Volume Control is located here.

NOTE: You can use multiple wireless drive-alert control panels, sensors and accessories and in any combination! Many Mier hard-wired and wireless accessories and control panels can also work in combination with one another.





This home owner did not want any wireless equipment. She wanted to be alerted when vehicles entered her drive both upstairs and downstairs, and she wanted an outdoor light to come on whenever someone entered the driveway. Mier's Tech Support Team created this layout for her:

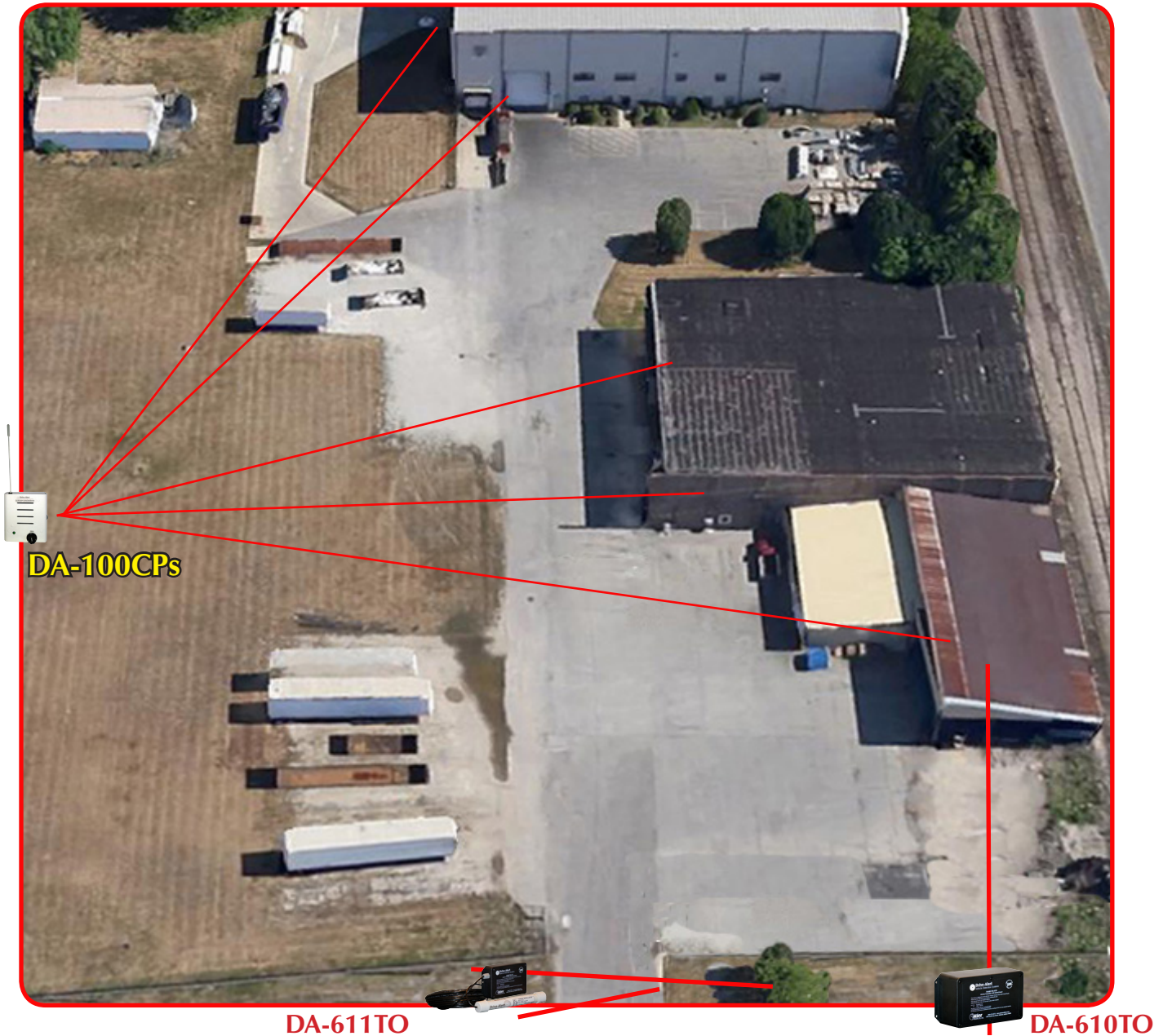
**Equipment:**

- \* One **DA-500 Drive-Alert** Kit which includes a DA-500CP Control Panel and a DA-051 Sensor with 100-feet of cable
- \* One **DA-500LKA** Accessory which provides additional contacts
- \* Two **DA-655** Chimes with Volume Control
- \* One **DA-505** Light Timer Control

- 1) The DA-051 Sensor & Cable portion of the DA-500 kit is buried here, 6-inches underground in PVC, and running up to the DA-500 Control Panel.
- 2) The Control Panel from the DA-500 Kit is plugged into a standard wall outlet and mounted in a utility room off of the garage (Sensor wired into it #1).
- 3) The DA-500LKA is also wired to the DA-500 Control Panel providing extra contacts, and mounted on the wall next to the DA-500 Control Panel.
- 4 & 5) The DA-655 Chimes are wall-mounted where they are hidden from view, but can also be heard and volume can be easily adjusted when needed. They are wired directly to the DA-500 Control Panel (using 18-gauge wire), and the DA-500 Control Panel's whistle switch in the OFF position so it will trigger the DA-655s.
- 6) The DA-505 Timer Control is wired to the DA-500LKA, which is wired to the DA-500 Control Panel. All three are wall-mounted in the utility room. The DA-505 Timer is set per customer preference from 1 minute up to 45 minutes.
- 8) An outdoor flood light is plugged into the DA-505, and will activate for the chosen period of time whenever a vehicle is detected. Mier does not supply/sell flood-lights.

NOTE: You can use multiple wireless drive-alert control panels, sensors and accessories and in any combination! Many Mier hard-wired and wireless accessories and control panels can also work in combination with one another.





The factory has an existing huge drive/parking lot area, and three different buildings, so they did not want to trench cable. They want to detect their gate opening and any time a vehicle arrives or leaves, as well as dock activity. They want alerts in two locations within the office, also in the receiving building, the shipping shipping, and the manufacturing area. Mier's wireless systems made this an easy install.

- 1) **DA-611TO** Sensor & Cable is buried 6" deep in PVC, with the sensor right by the gate and the cable running to the Transmitter five-feet up on a tree.
- 2) **DA-610TO** Sensor/Transmitter is pole-mounted right in the middle of two truck docks in the receiving area.
- 3) **DA-100CPs** are mounted in the areas the customer desired, where they are easily heard and volume control is easily adjusted.

NOTE: You can use multiple wireless drive-alert control panels, sensors and accessories and in any combination! Many Mier hard-wired and wireless accessories and control panels can also work in combination with one another.