

BW-98 AND BW-309 SERIES

Mier enclosures accommodate a wide variety of applications, and give installers unlimited options. Our "Premium Line" of UL Listed enclosures is very competitively priced, and the "Economy-Line" is even more competitive!

BW-98 and BW-309 Series Models:

- The BW-98B - Beige 7"W x 8"H x 3.5"D enclosure
- The BW-98BP - same as the above, with a 5" x 7" removable beige back panel
- The BW-98GUL - UL Listed Gray 7"W x 8"H x 3.5"D enclosure
- The BW-98BPGUL - UL Listed version with a 5" x 7" 14-gauge removable white back panel
- The BW-98RUL - UL Listed Red 7"W x 8"H x 3.5"D enclosure
- The BW-98BPRUL - UL Listed version with a 5" x 7" 14-gauge removable white back panel
- The BW-309B - Beige enclosure with more depth at 7"W x 8"H x 5.5"D
- The BW-309BP - same as the above with a 5" x 7" removable beige back panel

All 98 Series and 309 Series Enclosures Include:

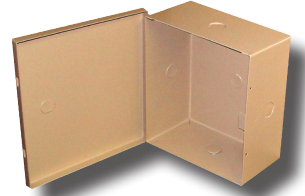
- Rugged CRS construction with a one-piece piano hinge for strength
- Key holes for quick and easy mounting
- Durable powder-coat finish
- Holes are in place for bolting the door shut, and a door knockout fits Mier's line of cam locks, combo locks or 1/4-turn latches
- Multiple, conveniently located electrical knockouts

Outdoor Versions:

UL Listed, NEMA 4X polycarbonate enclosures in these sizes are the BW-L863, BW-L982, BW-L1086, BW-SL864, BW-SL1084, BW-SL121084 and BW-SL12106.

BW-98B

7"W x 8"H x 3.5"D



BW-98BPGUL



BW-98BPRUL



BW-309B

7"W x 8"H x 5.5"D



Other colors, graphic screening, and customization are available for quantities of 25 or more.

**Don't see the enclosure you need?
Call or e-mail us and we'll be happy to help!**



Indoor & Outdoor Electrical Enclosures | Drive-Alert Vehicle Detection & Asset Protection Systems | Custom Fabrication

800-473-0213 ~ info@mierproducts.com ~ www.mierproducts.com