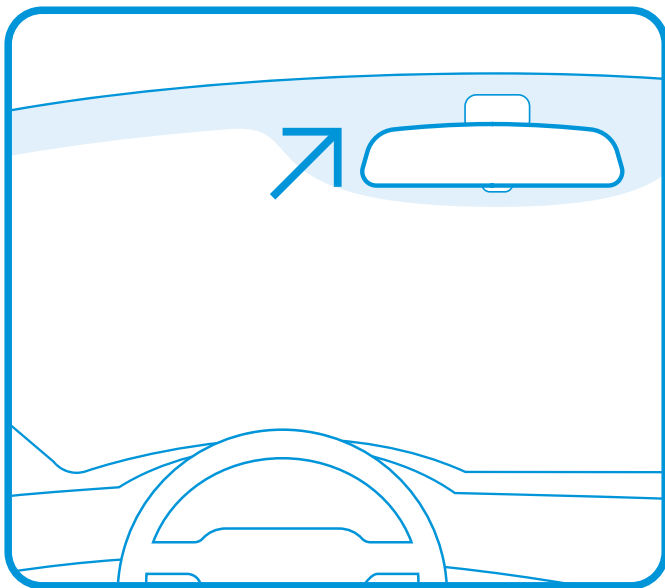


WINDOW BUTTON SWITCH

installation sheet

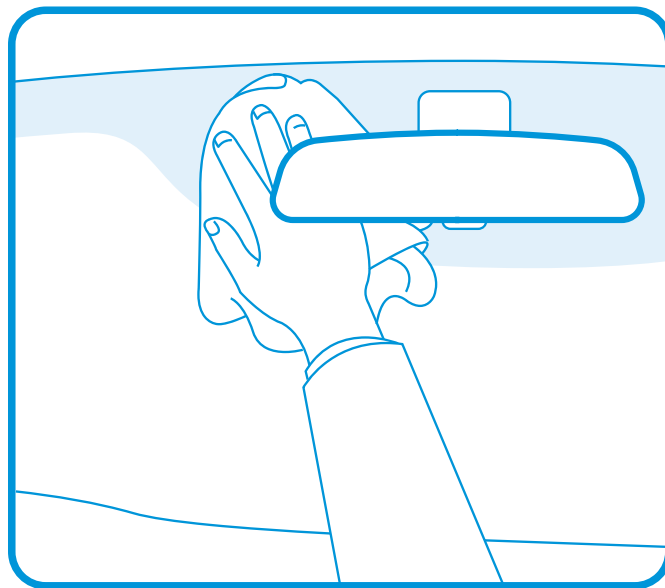
19-05-2015 | v1.0

Step 1*



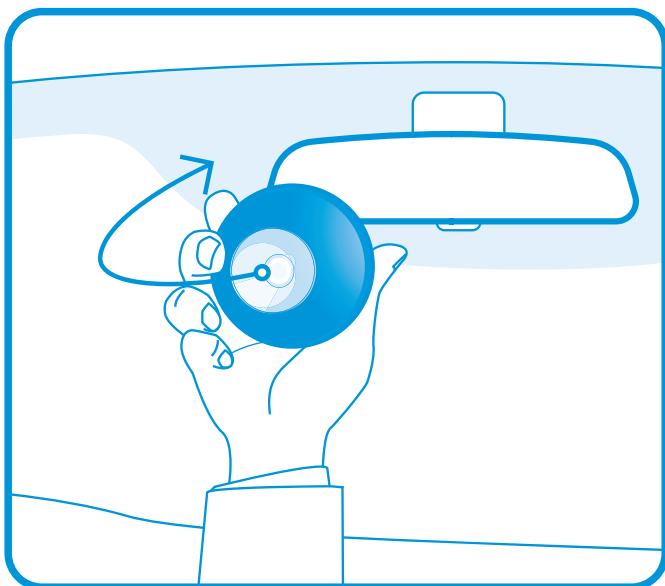
Determine the position of the Window Button Switch on the inside of the vehicle's window*.

Step 2



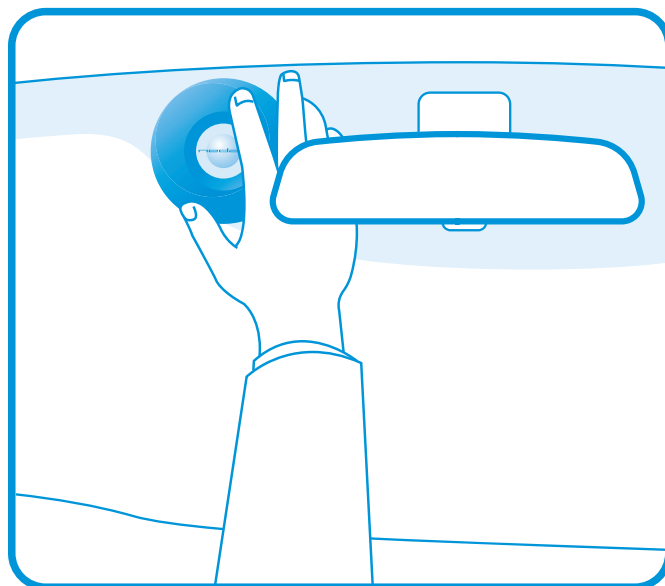
Clean the inside surface of the window. Make sure the window is completely oil/ dirt free.

Step 3



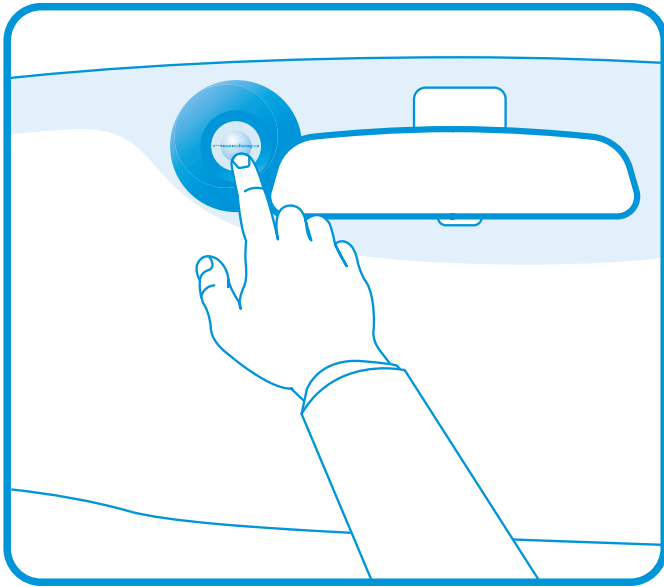
The suction cup is the Window Button Switch' front side (active part). This part should face the outside of the window.

Step 4



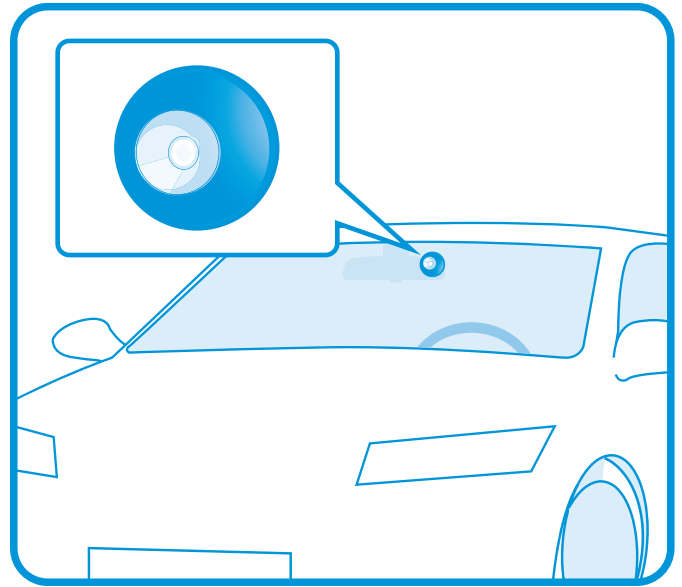
Firmly press the Window Button Switch against the inside of the window in line of sight of the TRANSIT reader.

Step 4



Activate the Window Button Switch by pressing the button when identification is required.

Step 5



The Window Button Switch has now been mounted correctly.

***Important note**

We advise to mount the Window Button Switch on the same side as where the long-range reader has been positioned. In case of a metalized windshield, we advise to place the Window Button Switch 2 inches from window top / 0-4 inches from the rear view mirror to ensure the performance of the Window Button Switch. Usually, vehicles with metalized windshields (also called solar control coatings) have a non-metalized communication window behind and on either side of the rear view mirror of the vehicle. For more specific information, please contact your vehicle owner manual or contact your dealership. Compliance with these instructions is important and strongly recommended in order to ensure proper operation of the system.