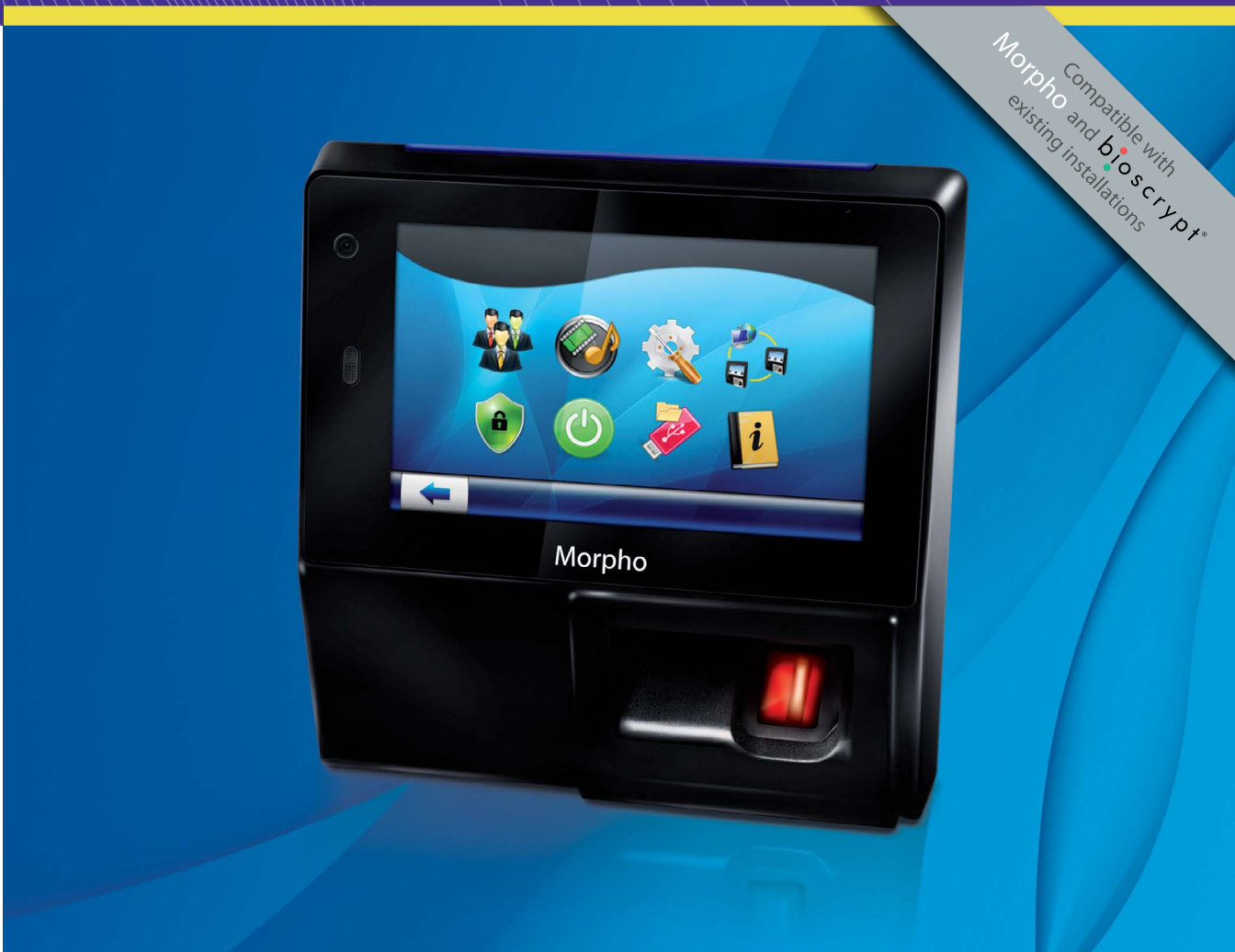


MorphoAccess[®] SIGMA Series BY IDEMIA



Access Control and Time & Attendance fingerprint station



Compatible with Morpho and bioscrypt[®] existing installations

STILL THE WORLD'S BEST IN BIOMETRICS... AND SO MUCH MORE!



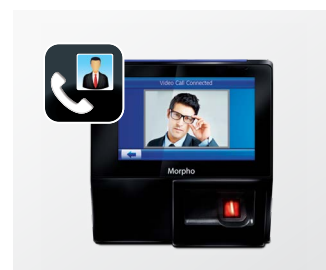
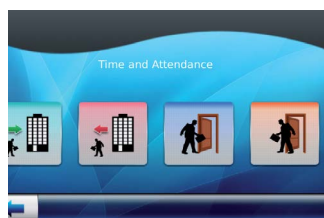
- Time & Attendance features
- Tablet-like user experience
- Videophone function
- Full set of contactless technologies including NFC
- Anti-fraud: fake finger & face detection, duress finger
- IP65 rated design

... and fast 1:100,000 identification!



Awarded Best Biometric Product by the Security Industry Association, Morpho and Bioscrypt successfully joined forces to design the best of breed fingerprint identification terminal.

Tailored for both Access Control and Time & Attendance applications, the MorphoAccess® SIGMA (MA SIGMA) Series by IDEMIA implements no fewer than 20 patents to master biometric identification and deliver a host of additional features, together with a refined and enjoyable user experience.



ULTRA-SECURE

The World's most accurate fingerprint technology is further enhanced with additional anti-fraud and anti-"buddy punching" features:

- Face detection and picture logging
- Fake finger detection
- Duress finger
- Banned/authorized user lists

FRESH, INTUITIVE, FLEXIBLE USER INTERFACE

The MA SIGMA Series by IDEMIA implements the design cues from today's most intuitive consumer electronics, for fast user adoption:

- 5" WVGA color touchscreen highlighting a sophisticated Graphic User Interface
- Seamless on-device administration
- Extensive customization capabilities: use your own content! (corporate video, audio messages, wallpapers etc.)

TIME & ATTENDANCE READY

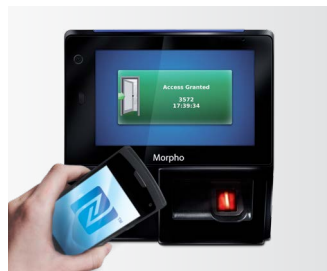
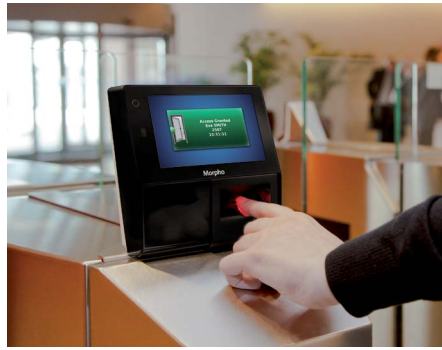
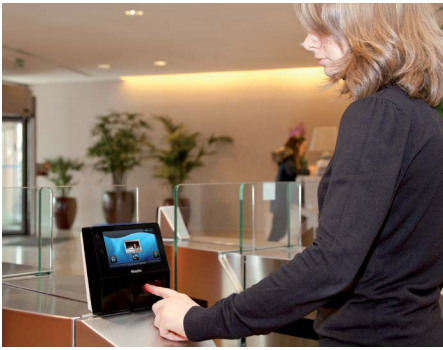
Increase your workforce management efficiency with:

- Touchscreen Time Clock, featuring 16 programmable function keys
- Access time slots and holidays scheduling
- Accurate punch records (up to 1 Million logs storage capacity)
- Real-time employee notifications
- Job Code management

VIDEOPHONE FUNCTION

- Built-in camera, speaker and microphone
- Standard IP-based video and audio interface
- Use cases:
 - Call-in function: employees can quickly report a problem right from the Time Clock
 - Surveillance: the terminal can be used by security staff to get pictures remotely from the security post





WORLD #1 FINGERPRINT TECHNOLOGY INSIDE

- Morphi fingerprint technology ranked #1 by NIST for accuracy
- Genuine 1:100K matching⁽¹⁾: World first in the industry
- 1:100K identification in less than 1 second (for frequent users)
- Exclusive optimizations tailored for access control
- Accuracy maintained regardless of number of users
- FBI PIV IQS certified optical sensor

MULTIPLE RECOGNITION FACTORS

- NFC⁽²⁾ technology support
- Full set of contactless smartcard options: Prox®, iClass®, MIFARE®, MIFARE® Plus, DESFire®
- PIN and BioPIN⁽³⁾ codes

EASY SET-UP AND MAINTENANCE

- Built for the real World and designed to save time at installation and reduce maintenance costs:
- Flush mounted “quick-tilt” access
 - No need for extra-cable wiring: connectors are directly pluggable on rear side
 - On-device or remote IP-based set-up
 - Secure USB port located on the side of the product

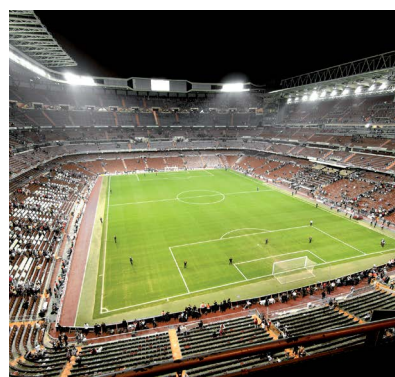
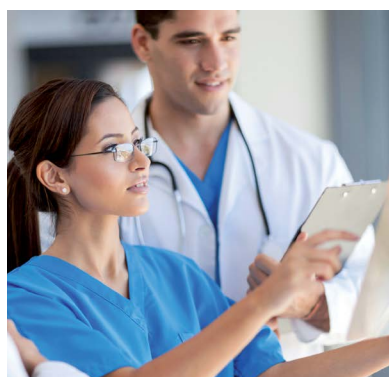
COMPATIBLE WITH EXISTING INSTALLATIONS

- Upgrade or complement your installation with MorphiAccess® SIGMA devices by IDEMIA using:
- MorphiManager by IDEMIA or MIK SDK on a Morphi network
 - SecureAdmin application or SecureSDK on a Bioscript network

⁽¹⁾ Search carried out against single 100K user database

⁽²⁾ NFC: Near Field Communication. Support depends on the smartphone model used with the MA SIGMA

⁽³⁾ BioPIN: alternate password solution instead of fingerprints



Technical specifications

- **CPU:** ARM® Cortex™-A9 core 1GHz
- **Linux Operating System**
- **5" WVGA color Touchscreen, VGA Camera**
- **Loudspeaker & Microphone**
- **Audio & Video player**
- **FBI PIV IQS certified optical fingerprint sensor**
- **Contactless reader options:** Prox®, iClass®, MIFARE®/MIFARE® Plus/ DESFire®/NFC[®]
- **Network/Communication:** Ethernet, RS485, RS422, USB Wi-Fi and 3G options
- **Internal storage capacity:** 512MB Flash, 512MB RAM + 8GB microSD Card
 - 5000 user records (2 fingers + 1 duress each), extendable up to 100,000 with licenses
 - 250,000 IDs in authorized user list
 - 1 Million transaction logs
 - 10,000 face picture logs
- **Inputs/outputs:** Wiegand In & Out (customizable up to 512 bits), OSDP, Door Relay, 3 GPI (including Door monitoring), 3 GPO
- **Power supply:** 12V-24V DC Power over Ethernet (PoE), compatible with PoE+ switches
- **Tamper switches**
- **Operating conditions:**
 - Temperature: -20°C to 60°C (-4°F to 140°F)
 - Humidity: 10% to 80% (non condensing)
- **Ingress Protection:** IP65
- **Compact with slim profile:** HxWxD = 153x151x58,5 mm (6x5,9x2,3 inches)
- **Ultra-light:** about 470 grams (depends on variant)
- **EMC/Safety standards:**
 - CE, CB, FCC, BIS
 - UL294 (for indoor use only)
- **RoHS, REACH and WEEE compliant**



THE SIGMA FAMILY