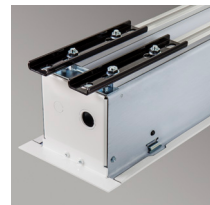


ELECTRIC Access FIT V

CEILING-RECESSED, TAB-TENSIONED



■ The slim case design of the ceiling-recessed Access FIT V electric projection screen provides easy installation above the ceiling—perfect for small conference or multi-purpose rooms and home theaters. Installation of the case during the initial phase of construction eliminates job site damage, allowing for installation of the screen at a later time.

RF welded tabs eliminate stickiness and tab separation. Tabs warranted against separation for five years. Tab-tensioned screens provide a perfectly flat viewing surface with better image quality.

FEATURES



- Access FIT is recommended when space is at a premium. The standard Access is a good alternative whenever the above-ceiling space permits.
- Image area fully framed with black. Standard 12" (30 cm) black drop at top of viewing area.
- Adjustable or removable hoisting brackets included for easy lifting during installation.
- Sliding brackets on top of the case allow for adjustments for mounting.
- Sliding brackets inside case accommodate different size screens.
- Bottom closure panel detachable or hangs in place with "T" bracket to provide accessibility for service or maintenance.
- Quick-connect wiring allows for early installation of the case with the addition of the screen later.
- Includes a 110V, 3-position switch (standard). Quiet, low voltage motors and 220V options are available.

- Low voltage, video interface or other controls can be built into housing for below ceiling access.
- White case standard, black available upon request.

WARRANTY

draperinc.com/warranty.aspx

OPTIONS

- **Quiet low-voltage motors** and 220V options are available.
- **Control options:** Low voltage, video interface or other controls can be built into housing for below ceiling access.
- **Viewing surfaces:** TecVision®, OptiFlex™ (tensioned), CineFlex™ (rear projection), and ClearSound™ families.

SUPPORTING DOCUMENTS

All instructions, technical drawings and other supporting documents are located at: draperinc.com/documents.aspx

SIZES

- **Case dimensions** 5 1/16" high x 6 7/16" deep (14 cm x 16 cm), including trim flange. Built-in controls may increase case length. Mounting brackets may add to case dimensions, see Submittal for details
- **Maximum image width** up to 104" (264 cm) wide, depending on surface selection.
- 16:10 FORMAT: from 94" (238 cm) to 123" (312 cm) diagonal.
- 16:9 HDTV FORMAT: from 92" (233 cm) to 119" (302 cm) diagonal.
- 4:3 NTSC/PAL Format: from 72" (183 cm) to 132" (335 cm) diagonal.
- AV FORMAT: from 50" x 50" (127 cm x 127) to 72" x 96" (183 cm x 244 cm) viewing area.
- Custom sizes available.

For more information on this product visit: draperinc.com/projectionscreens/electricscreens.aspx