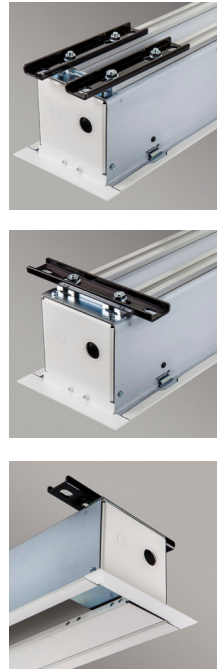


# ELECTRIC Access Fit E

FREE-HANGING, CEILING- RECESSED, SLIM CASE DESIGN



Northwestern University Technical Institute, Evanston, IL, Dealer: Carney & Company, Inc. Chicago, IL  
Photography: Rich Sistos Photography, Itasca, IL

Engineered with compact housing less than 6" tall, the ceiling-recessed Access FIT E electric projection screen fits tighter ceiling spaces. The bottom closure panel provides access to all components for easier service and maintenance. Installation of the case during the initial phase of construction eliminates job site damage, allowing for installation of the screen at a later time. The Access FIT E is an ideal choice for boardrooms, training rooms, universities, and churches.

THIS SCREEN IS FREE-HANGING  
Free-hanging, fiberglass-backed projection screen maintains flatness thanks to the weight of the screen and bottom dowel.

## FEATURES

- Access Fit is recommended when space is at a premium. The standard Access is a good alternative whenever the above-ceiling space permits.
- NTSC, HDTV AND 16:10 format have image area framed with black on all four sides. Black side borders are available on request for AV format Screens.
- Adjustable or removable hoisting brackets included for easy lifting during installation.
- Sliding brackets on top of the case allow for adjustments for mounting.
- Sliding brackets inside case accommodate different size screens.
- Bottom closure panel detachable or hangs in place with "T" bracket to provide accessibility for service or maintenance.



- Quick-connect wiring allows for early installation of the case with the addition of the screen later.
- Includes a 110V, 3-position switch (standard).
- Low-voltage, video interface or other controls can be built into housing for below ceiling access.
- White case standard, black available upon request.

## WARRANTY

[draperinc.com/warranty.aspx](http://draperinc.com/warranty.aspx)

## OPTIONS

- **Viewing surfaces:** OptiView™ and ClearSound™ families.
- Quiet, low voltage motors and 220V options are available.

## SUPPORTING DOCUMENTS

All instructions, technical drawings and other supporting documents are located at: [draperinc.com/documents.aspx](http://draperinc.com/documents.aspx)

## SIZES

- **Case dimensions** are 5 1/16" high x 6 7/16" deep (14 cm x 16 cm) including trim flange. Built-in controls may increase case length. Mounting brackets may add to case dimensions, see Submittal.
- **Maximum image width** up to 120" (305 cm) wide, depending on surface.
- 16:10 FORMAT: from 94" to 137" (239 cm to 348 cm) diagonal.
- 16:9 HDTV FORMAT: from 92" to 133" (234 cm to 338 cm) diagonal.
- 4:3 NTSC/PAL FORMAT: from 72" to 150" (183 cm to 381 cm) diagonal.
- AV FORMAT: from 50" x 50" (127 x 127 cm) to 120" x 120" (305 cm x 305 cm) viewing area.
- Custom sizes available. For larger sizes see the Access E.

For more information on this product visit: [draperinc.com/projectionscreens/electricscreens.aspx](http://draperinc.com/projectionscreens/electricscreens.aspx)