



# HikCentral Professional

**Versatile Security** in One Platform







## What is HikCentral Professional

HikCentral Professional, Hikvision's software platform for integrating and managing security systems, is designed to meet a variety of security challenges in one place. On the platform, you can manage individual systems such as video security, access control, security alarms, and more, as well as explore cross-system functionalities. While facilitating protection of people and property, it makes daily operations more efficient and helps users of all kinds to make smarter decisions.



## System Architecture

01

### Light and efficient

HikCentral Professional employs a lightweight architecture that features a reduced consumption of system resources. It is capable of managing systems of varying size with consistent efficiency.

03

### Integrated and open

The platform is compatible with virtually all Hikvision products and their rich applications, including deep-learning-based analytics and statistics. The platform's open architecture permits easy integration with 3<sup>rd</sup>-party systems (OpenAPI/Database) and hardware (ONVIF).

02

### Unified and flexible

The platform supports assembling various application plug-ins under a unified, on-demand architecture for collaboration across business segments. What's more, new plug-ins can be constantly developed to meet new business needs.



## Versatile applications cover a broad range of business needs



### Nine major applications to choose from

All major security needs are covered through nine core security modules, including video, access control, visitor, attendance, entrance & exit, security alarm, intelligence analysis, digital signage, and maintenance. Whatever your situation, you will find what you need here.

### A unified security system that enhances management operations

All applications can be connected in an interactive way to build a truly unified architecture, enhancing your operational efficiency – for example, an intrusion alarm and access control with video verification, or perhaps visitor control with pre-registration of vehicles, and much more.





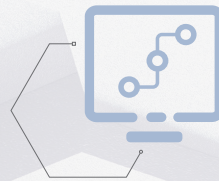
## Key Benefits

### Streamlines operations and management

With situational awareness powered by informative dashboards and interactive E-maps, optimal approaches advised by operation wizards, and the flexibility of a user-defined control panel, you can make smarter decisions fluidly and efficiently.



01



02

### Simplifies deployment and maintenance

With a minimum system requirement of Intel i3 CPU and 8 GB RAM, you can have your own security platform deployed with limited hardware cost. Moreover, maintenance of the whole system is much easier with visualized health monitoring in real time.



## Scales as business grows

By virtue of a flexible and scalable architecture, the platform can be scaled as your business needs evolve. You can expand it from a small 32-channel, 8-door system to an ultra-large-scale system that links up to 100,000 channels of equipment (under the RSM mode).



## Promises security and reliability

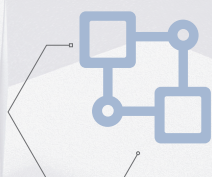
Feel secured with advanced system protection by constant encryption of data and privacy, along with comprehensive redundancy and disaster recovery mechanisms. You can be assured of your business continuity.



05



03



04

## Facilitates hassle-free integration

Through an open architecture design and a series of highly adaptive OpenAPI interfaces, you will enjoy hassle-free integration with a wide range of third-party systems such as ARC and payroll systems.





## User-centric design ensures personalized and optimized experience



## Personalized security management

Whatever your role – manager, decision maker, HR, receptionist, security, or maintenance staff – HikCentral Professional will help you get up and running quickly with pre-set modes. What's more, users can customize their own system with the applications needed and create a personal control panel for their specific duties and routines, empowering staff with custom, optimized management approaches.



## Visualized systems, data, and maintenance

Data collected from various applications becomes easy to understand via dynamic reports and helpful, intuitive dashboards. The dashboard supports creating your personalized display for the information you care about the most, contributing to smarter decision making with more situational awareness.



## Interactive E-maps

Interactive E-maps give users an instant and dynamic view of multiple sites and the status of multiple devices at the same time, as well as a shortcut to handle events and alarms directly onboard. It enables management and security staff to get accurate and timely notifications while responding to incidents promptly, enhancing day-to-day operational efficiency.



## Light but powerful software simplifies installation and maintenance

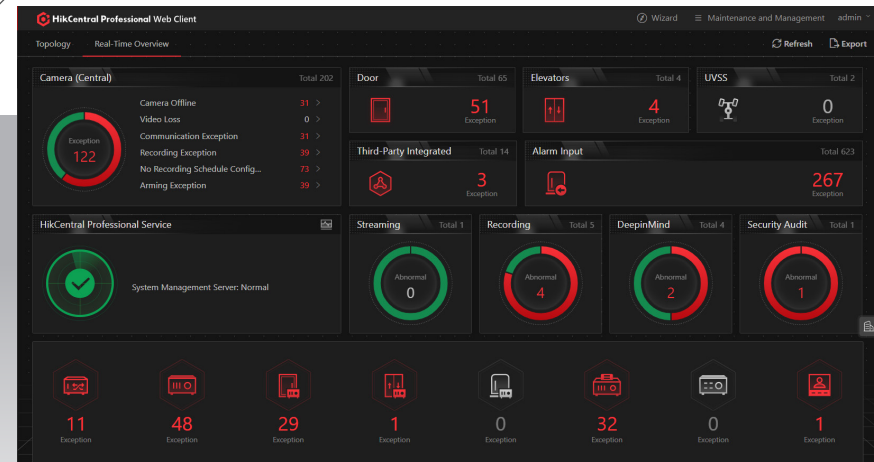


## Easy installation

Minimum system requirements for HikCentral Professional is i3 CPU, 8 GB RAM.

## Easy maintenance

The system health status is displayed visually in real time, contributing to faster notifications and locating of abnormal situations. What's more, all system history records are trackable.

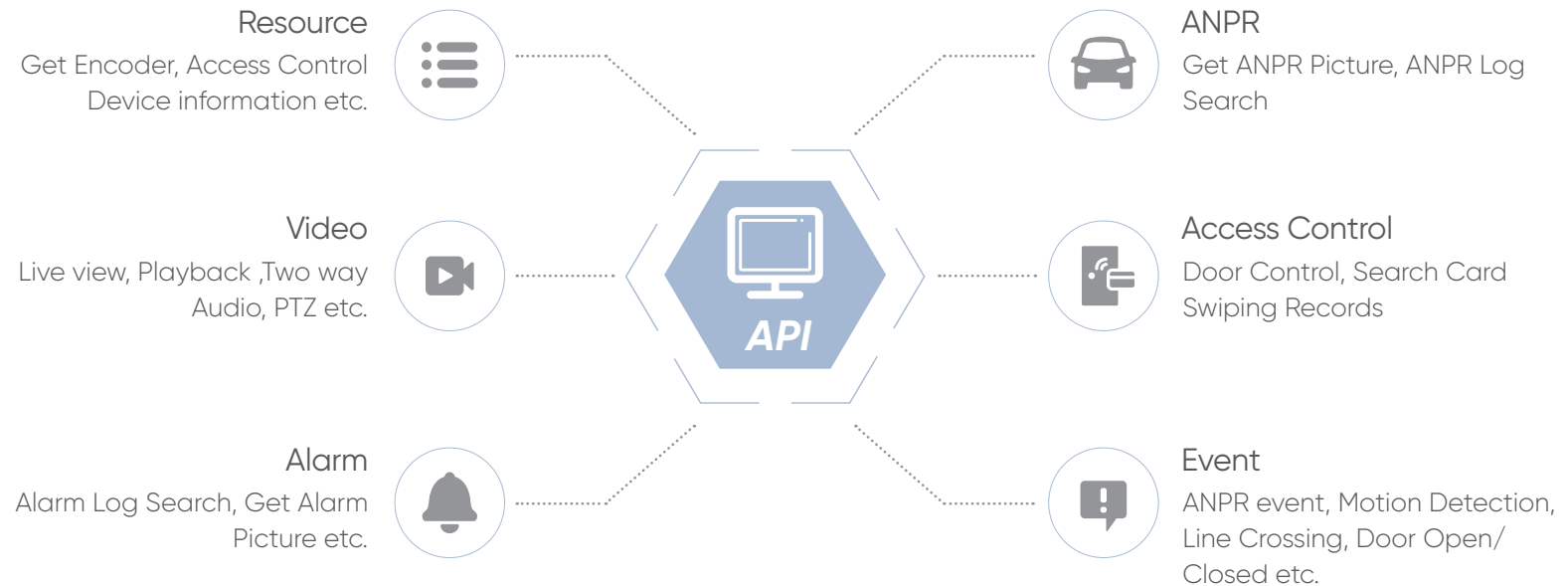




# Open system architecture allows easy and convenient integration

## Open API

Collaborative, goal-oriented development creates the most useful and customizable applications. Hikvision has created an open Software Development Kit for innovated systems to meet any particularized demand.





## Video

### Efficient and comprehensive video surveillance

Quickly save operating scenes and efficiently complete daily monitoring. Users can customize their own view to have a holographic perception of all videos, maps and data. The monitoring views of specific scenes can be opened in one second for quick preview and playback.

### Low bandwidth network adaptability

Smooth Streaming automatically adjusts bitrate and resolution between clients and NVRs / IPCs according to real-time network conditions.

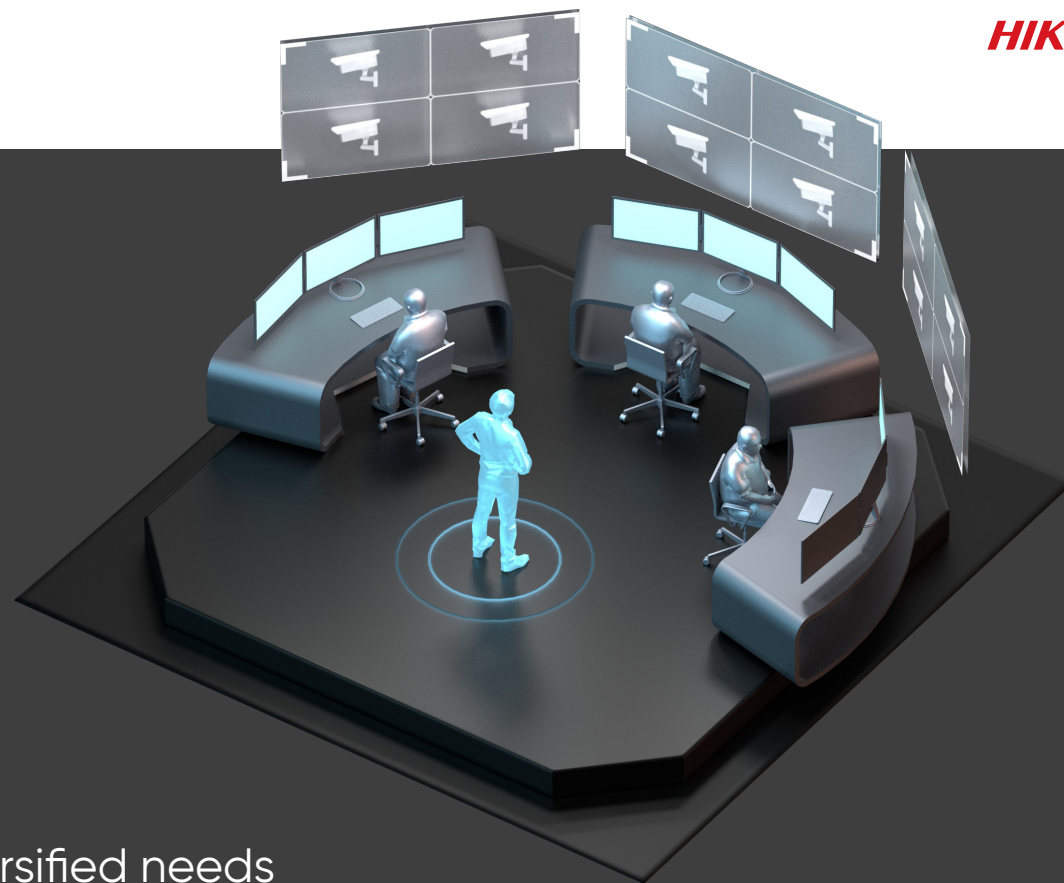
### Quick and convenient search and playback

- Quick incident search and location using thumbnails, supporting sub-stream, transcoded, and frame-extracting playback
- Convenient event search based on tags and VCA search analysis, as well as key attributes of vehicles and persons
- Quick go-through of video based on event types, which reduces potential risks by locating top-frequency events in top-frequency areas

### VCA Search

"After-the-fact" VCA search provides convenient analysis, including motion analysis, line crossing detection, intrusion detection and more.





## Video Export as Evidence

- Supports merging several clips into one video file for downloading, making management flow simpler and easier
- File export is available in various formats including exe., avi., mp4, and more

## Reliable storage satisfying diversified needs



### Flexible Storage

HikCentral Professional offers event-triggered video recording and playback, along with automated video backup during idle periods. Channel-based video and image storage can be configured as well.



### Multiple Storage Media

Video and images can be stored on various media storage platforms, such as NVRs/DVRs, pStor, Hybrid SAN, and Cluster Storage Servers.



### High Availability

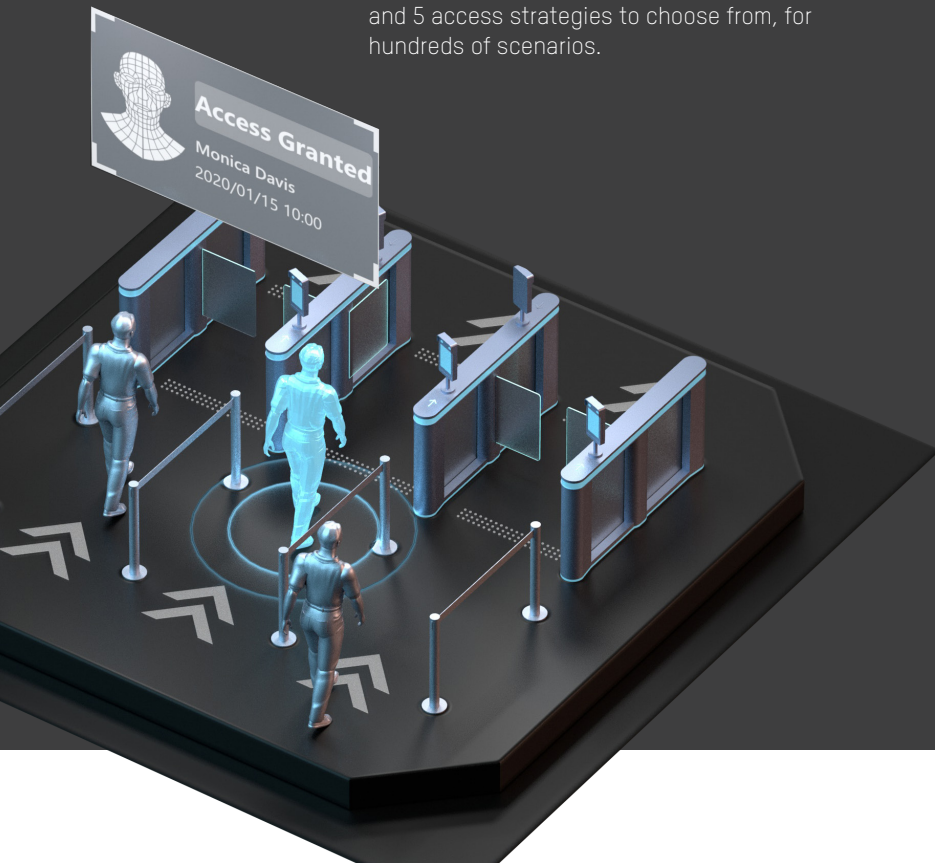
HikCentral Professional features a fail-safe / high availability design with redundant remote & local backup and scheduled copy-back, along with pStor cluster services and NVR hot swapping.



## ➤ Access control

### Comprehensive and flexible access management

Users are able to customize a comprehensive access control system for employees and visitors with 5 credentials, 512 authentications, and 5 access strategies to choose from, for hundreds of scenarios.



### Easy credential assignment

The whole process of credential assignment is easy and user-friendly with clear, step-by-step guidance. And the credential overview module enables users to quickly locate and handle abnormal credentials.

### Convenient personnel management

Employees, and other personnel can scan the QR code generated by HikCentral Professional and register their information remotely. Upon approval of the administrator, they can get the access permissions instantly or at a pre-set time.

### Quick alarm handling

When incidents occur, the access control system will trigger IP cameras to take pictures and record videos. Security staff can check the video in real time and take prompt actions if needed.

## Attendance



### Flexible rule setting

Users can schedule attendance rules for normal, man-hour, multiple, or temporary shifts based on specific scenarios for offices, factories, stores, and more.

### Diversified attendance reports

Users can choose from up to 17 kinds of attendance reports, covering major business scenarios. Attendance files can be exported in Excel, PDF, and CSV formats and more.

### Integration with third-party systems

HikCentral integrates widely with third-party software systems such as salary calculation systems, meeting complex demands of a variety of businesses.

## Visitor

### Efficient visitor management

Digitalized visitor management reduces paperwork as well as costs. Visitors can complete their registration in advance and pass through accessible areas as soon as they arrive, enjoying a better experience. Visitors registered beforehand can quickly re-register later to enhance efficiency.

### Manage your visitors in a secure way

Visitors are only allowed to enter areas they are given access. Their visiting history is also traceable, adding to overall security.



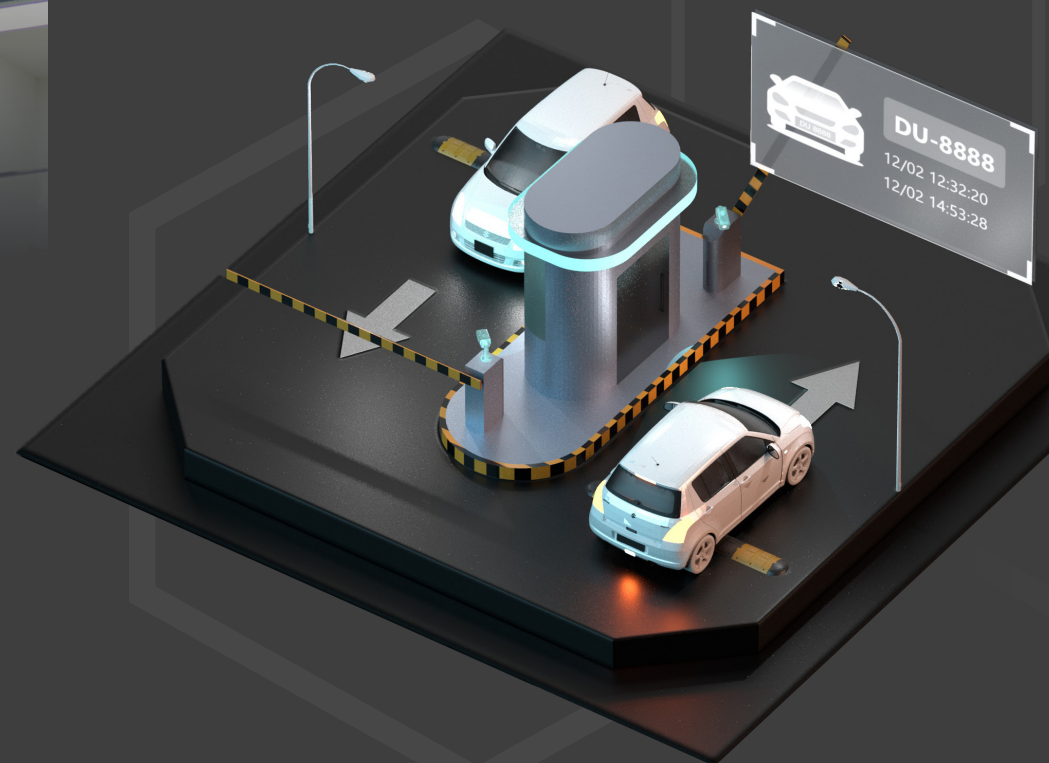


## Video intercom

- Serves as a centralized platform to manage the video intercom system
- Supports configuring related devices and setting rules for device interaction
- Pushes calls from the indoor or outdoor station to the management staff

## Vehicle

Flexible entrance modes and authorization rules enhance efficiency and reduce resource usage.





### Vehicle entrance & exit management

Users can customize release rules for authorized and unauthorized vehicles discretely. Temporary vehicles can call the management center via intercom and get permissions as needed.

### Leasing agreement management

Supports configurations for parking space allowance where multiple companies lease parking spaces

### Information display

Displays welcome message and vehicle information on LED screen

### Alarm management

Supported alarms include Overstated Parking, Park in Forbidden Period and Call Center

### Strong capacity

Supports up to 8 traffic lanes and relays events triggered by ANPR cameras, video intercoms and access control devices

## Booth Mode

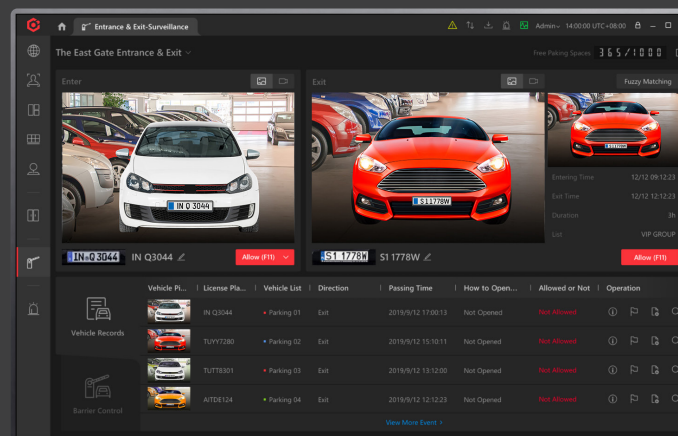
In the professional Watchhouse mode, all entrance & exit related information is compiled to help staff quickly let vehicles exit.

### Information display of passing vehicles

Displays images and real-time video of passing vehicles, supporting manual verification

### General matching

General preliminary comparison match for vehicles not fully recognized when exiting



### Manual release

Supports manual release and records the justification

### Displays remaining parking spaces

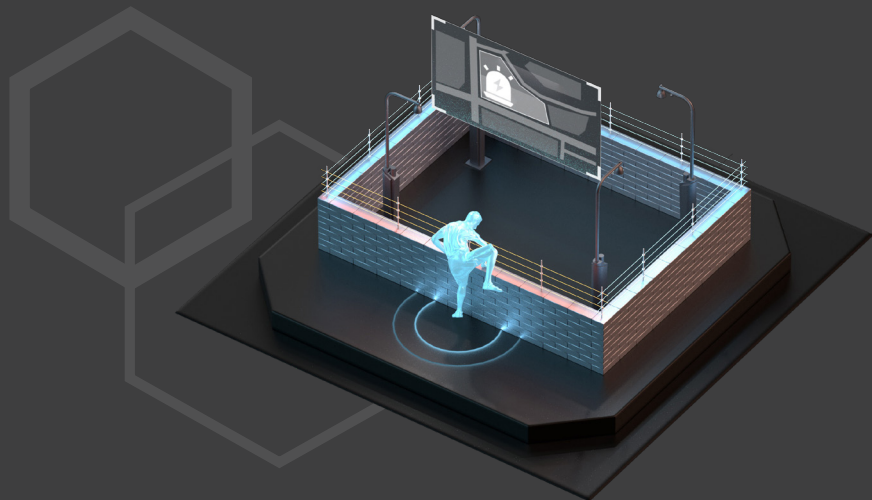
Shows number of remaining parking spaces in real-time

### Historical record search

Easy and efficient history tracking



## Security alarm



### Alarm Sources

HikCentral Professional can centrally manage various alarm sources, such as video, access control, alarm panels, and third-party alarm inputs.

### Alarm Center

- Real-time display of all kinds of alarms
- Linked videos and locations will be displayed automatically when an alarm is selected

### Alarm Linkage

- Flexible linkage with access control devices, cameras, and more can be configured
- Displays the status of alarm-triggering devices and quickly locates devices that have triggered alarms

### Composite Alarm



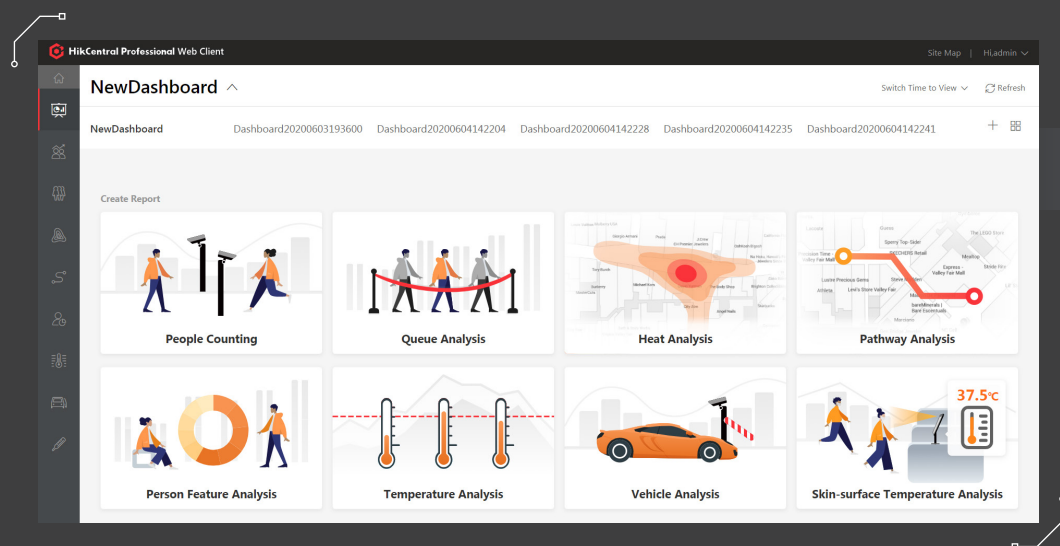
A composite alarm enables arming or disarming in order to promote flexibility and accuracy of alarm management. For example, you may use composite I/O signals and motion detection events by installing infrared beams, effectively reducing the false alarm rate.



### Alarm Escalation

Alarm escalation takes place when the primary operator does not respond. An unprocessed alarm will be forwarded and escalated to upper level management when the original operator ignores.

## ▶ Intelligent analysis



### Intelligent Analysis Dashboard

- The video-based intelligent analysis dashboard enables flexible and extensible digital applications
- Including smart commercial analysis like flow, attribute, wait-time, and visitor trend analyses, as well as vehicle management and temperature measurement

## ▶ Digital signage

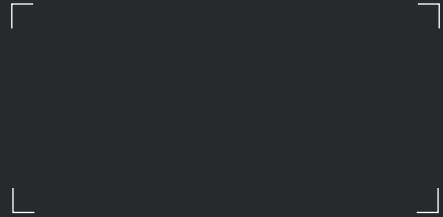


- Eight types of pre-installed program templates are ready for use, saving time and money
- All programs are created visually, making advertisement creation, temperature screening, flow control, attendance, and other functions easier and more efficient.



# HIKCENTRAL 2.0

Distributed by:



## Hikvision Europe

Dirk Storklaan 3  
2132 PX Hoofddorp  
The Netherlands  
T +31 23 5542770  
info.eu@hikvision.com

## Hikvision France

6 rue Paul Cézanne,  
93360 Neuilly-Plaisance  
France  
T +33 (0)1 85330450  
info.fr@hikvision.com

## Hikvision Poland

The Park, Office Building A  
Krakowiaków 50  
02-255 Warsaw, Poland  
T +48 22 4600150  
info.pl@hikvision.com

## Hikvision Czech

BETA Building, Vyskocilova  
1481/4, Prague 4  
Czech Republic  
T +42 29 6182640  
info.cz@hikvision.com

## Hikvision Germany

Werner-Heisenberg Straße  
2b, D-63263  
Neu-Isenburg, Germany  
T +49 69 401507290  
sales.dach@hikvision.com

## Hikvision Romania

Splaiul Independentei street  
291-293, Riverside Tower, 12th  
floor, 6th district,  
Bucharest, Romania  
T +31235542770/988  
marketing.ro@hikvision.com

## Hikvision Belgium

Neringenweg 44,  
3001 Leuven, Belgium  
T +31 23 5542770  
info.bnl@hikvision.com

## Hikvision Hungary

Budapest, Reichl Kálmán u. 8,  
1031, Hungary  
T +36 1 323 7650  
info.hu@hikvision.com