

Quick Start Guide

GV-Edge Recording Manager



Thank you for purchasing GV-Edge Recording Manager. This guide is designed to assist the new user in getting immediate results from GV-Edge Recording Manager. For advanced information on how to use GV-Edge Recording Manager, please refer to *GV-Edge Recording Manager User's Manual* online.



© 2021 GeoVision, Inc. All rights reserved.

Under the copyright laws, this manual may not be copied, in whole or in part, without the written consent of GeoVision.

Every effort has been made to ensure that the information in this manual is accurate. GeoVision, Inc. makes no expressed or implied warranty of any kind and assumes no responsibility for errors or omissions. No liability is assumed for incidental or consequential damages arising from the use of the information or products contained herein. Features and specifications are subject to change without notice.

GeoVision, Inc.
9F, No. 246, Sec. 1, Neihu Rd.,
Neihu District, Taipei, Taiwan
Tel: +886-2-8797-8377
Fax: +886-2-8797-8335
<http://www.geovision.com.tw>

Trademarks used in this manual: *GeoVision*, the *GeoVision* logo and *GV* series products are trademarks of GeoVision, Inc. *Windows* is the registered trademark of Microsoft Corporation.

October 2021

Scan the following QR codes for product warranty and technical support policy:



[Warranty]



[Technical Support Policy]

Contents

1. Introduction	1
1.1 Minimum System Requirements	1
1.2 Supported GeoVision Products	3
1.3 Options	4
1.4 GPU Decoding Specifications	4
Windows Version	5
2. Getting Started	6
2.1 Installing the GV-Edge Recording Manager	6
2.2 Adding Hosts	7
2.3 Overview	11
2.3.1 Main Window	11
2.3.2 Toolbar	12
3. Configuring the NAS	13
3.1 Recording to NAS	13
3.2 Changing the NAS Storage	16
3.3 Deleting the NAS Storage for Recording	16
4. Enabling Host Monitoring	17
5. Accessing Playback	18
Mac Version	20
6. Getting Started	21
6.1 Installing the GV-Edge Recording Manager	21
6.2 Adding Hosts	22
6.3 Overview	25
6.3.1 Main Window	25
6.3.2 Toolbar	26
7. Configuring the NAS	27
8. Enabling Host Monitoring	31
9. Accessing Playback	33

1. Introduction

Welcome to the GV-Edge Recording Manager Quick Start Guide. In the following sections, you will learn about the basic installations and configurations. For more details, see [GV-Edge Recording Manager User's Manual](#).

1.1 Minimum System Requirements

Install GV-Edge Recording Manager to a computer that meets the minimum system requirements.

Windows Version

OS Supported	64-bit	Windows 10 / Server 2016 / Server 2019
CPU	32 channels (Dual Streams)	Core i3-4130, 3.4 GHz
	64 channels (Dual Streams)	Core i5-4670, 3.4 GHz
Memory	32 channels (Dual Streams)	8 GB
	64 channels (Dual Streams)	16 GB
Graphic Card		PCI-Express, 800 x 600 (1280 x 1024 recommended), 32-bit color
Note: <ol style="list-style-type: none">Support for 32-bit OS and 64-bit Windows 7 / 8 / 8.1 / Server 2008 R2 / Server 2012 R2 has ended.H.265 decoding requires 6th-Gen Intel Desktop Processor (Skylake) or above, which comes with onboard GPU.		

Mac Version

OS Supported		OS X 10.9 or later
Mac PC	32 channels (Dual Streams)	Mac mini (Core i5-3210M, 8 GB RAM)
	64 channels (Dual Streams)	iMac (Core i7-4770s, 8 GB RAM)

Software License (Windows and Mac Version)

Free License	32 channels
Maximum License	64 channels (Windows / Mac) + GV-Joystick (Windows)
Increment for Each License	N/A

Optional Combinations	N/A	
License Type	Windows	Software License, Internal or External Dongle
	Mac	In-App Purchase

Note:

1. GV-USB dongle comes in internal and external dongles. It is recommended that you use the internal GV-USB Dongle to have the Hardware Watching function which restarts the PC when Windows crashes or freezes.
 2. You can only purchase software license for Mac online. For details, see *12.2 Purchasing License* in *GV-Edge Recording Manager User's Manual*.
 3. The licensing for Windows version comes in two forms: *GV-USB dongle* and *software license*. The two are incompatible. If a GV-USB dongle has been inserted on the system, remove it before using software licensing. For details on software licensing, click [here](#).
-

1.2 Supported GeoVision Products

GV-IP Devices		Supported Version
GV-IP Camera		All GV-IP Cameras with the latest firmware.
GV-Video Server	GV-VS11	V1.03 or later
	GV-VS12	V1.07 or later
	GV-VS14	V1.01 or later
	GV-VS2400/2420	V1.00 or later
	GV-VS2800/2820	V1.00 or later
	GV-VS21600	V1.00 or later
GV-NVR System	GV-SNVR0400F	V1.10 or later
	GV-SNVR0411	V2.10 or later
	GV-SNVR0811	V2.40 or later
	GV-SNVR1600	V1.10 or later
	GV-SNVR1611	V1.00 or later
GV-Software		Supported Version
GV-Recording Server		V1.2.4.0 or later
GV-DVR / NVR		V8.5.9.0 or later
GV-VMS		V14.10 or later

Note:

- For the **NAS application**, it is required to use GV-IP Cameras (firmware V3.00 or later), GV-Target Cameras (firmware V1.02 or later), GV-EFD2101/EFD3101/EVD2100/EVD3100 (firmware V1.00 or later).
- Files recorded to **GV-NAS Systems** are stored in MPEG4 format and those recorded to memory cards are stored in AVI format.
- Remote playback from SD card** is not supported for the following models: GV-ABL / TBL Series, GV-ADR / TDR Series, GV-AVD / TVD Series, GV-EBD Series, GV-QSD5730 / 5731-IR, GV-SD2322-IR / 2722-IR / 3732-IR.
- Adjusting dome view of **PTZ cameras** by double-clicking on the live view is not supported for those added via GV-VMS.
- The Center Move function of **GV-PTZ cameras** is not supported for such added via GV-Recording Server / SNVR / VMS.
- The following features are not supported for **GV-SNVR**:
 - Instant Playback.
 - Audio not supported for recording backup

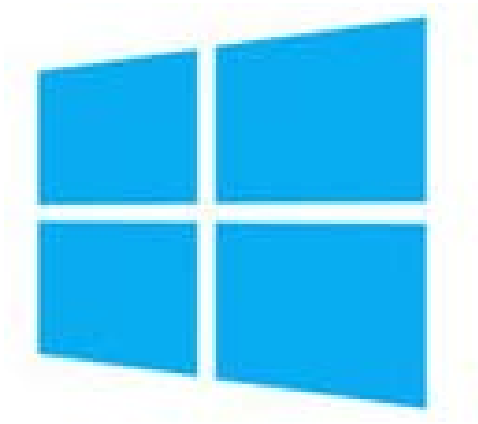
1.3 Options

GV-NAS System	GV-NAS System is a Linux-based, network attached storage device designed to store GV-IP Camera and GV-Target Camera recordings.
----------------------	---

1.4 GPU Decoding Specifications

GPU (Graphics Processing Unit) decoding can lower the CPU loading and increase the total frame rate supported by a GV-Edge Recording Manager. GPU decoding can be performed on on-board VGA, external VGA, or both. For details, see *GPU Decoding Specifications* in *GV-Edge Recording Manager User's Manual*.

Windows Version



2. Getting Started

2.1 Installing the GV-Edge Recording Manager

Follow the steps below to install GV-Edge Recording Manager from the GeoVision Website.

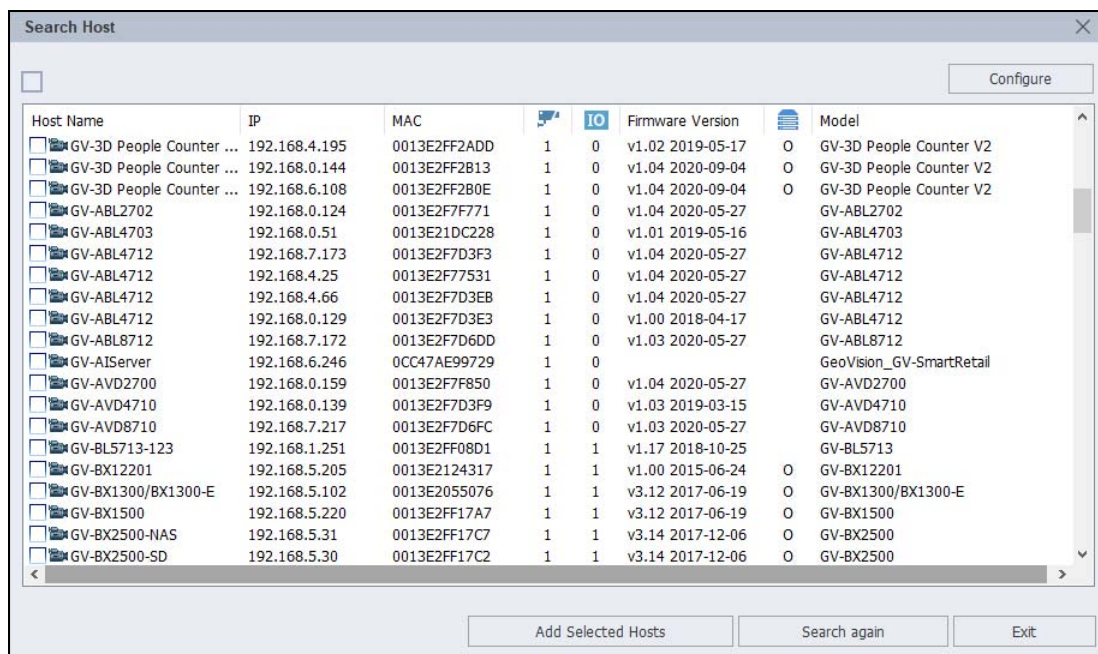
1. Go to the **Download** page of GeoVision [Website](#).

2. Click the **Download** icon  of **GV-Edge Recording Manager (Windows)**.

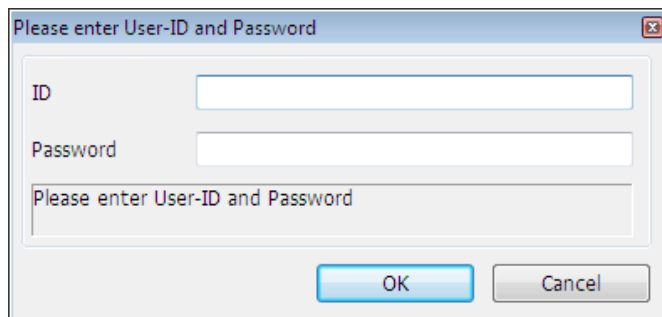
2.2 Adding Hosts

Note: To connect to GV-DVR / NVR / VMS hosts, make sure **Control Center Service** and **Remote ViewLog Service** functions are enabled to allow remote access of GV-Edge Recording Manager.

1. Execute the GV-Edge Recording Manager program.
2. Upon first startup, GV-Edge Recording Manager automatically searches for the GV-IP Devices and the servers installed with GeoVision software that are under the same LAN.

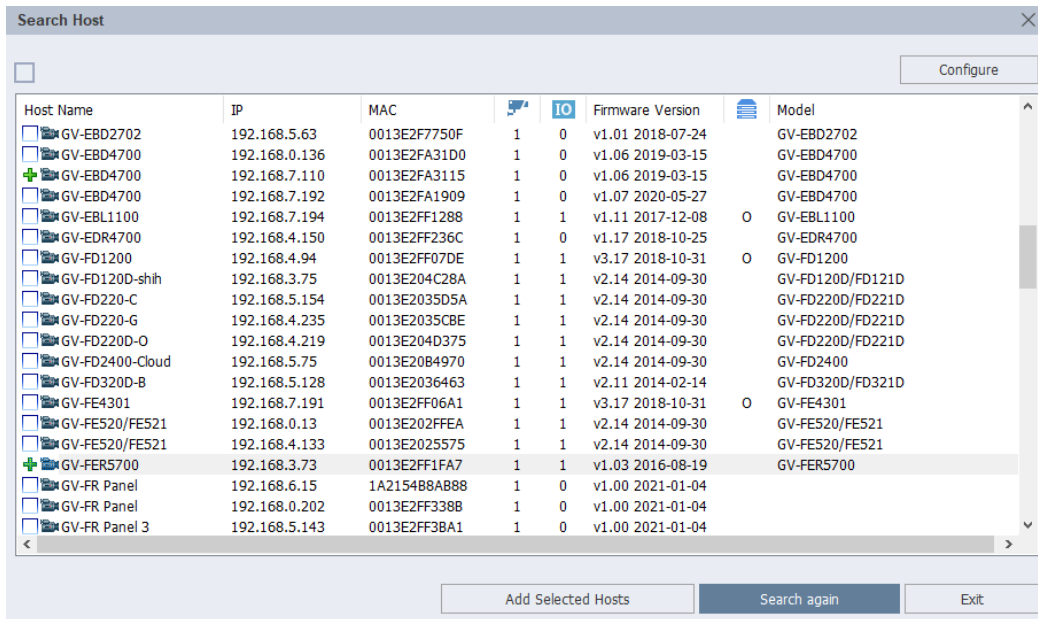


3. When the search is finished, you are prompted to select hosts. Click **OK** to proceed.
4. Select a desired host by checking the box . This dialog box appears.

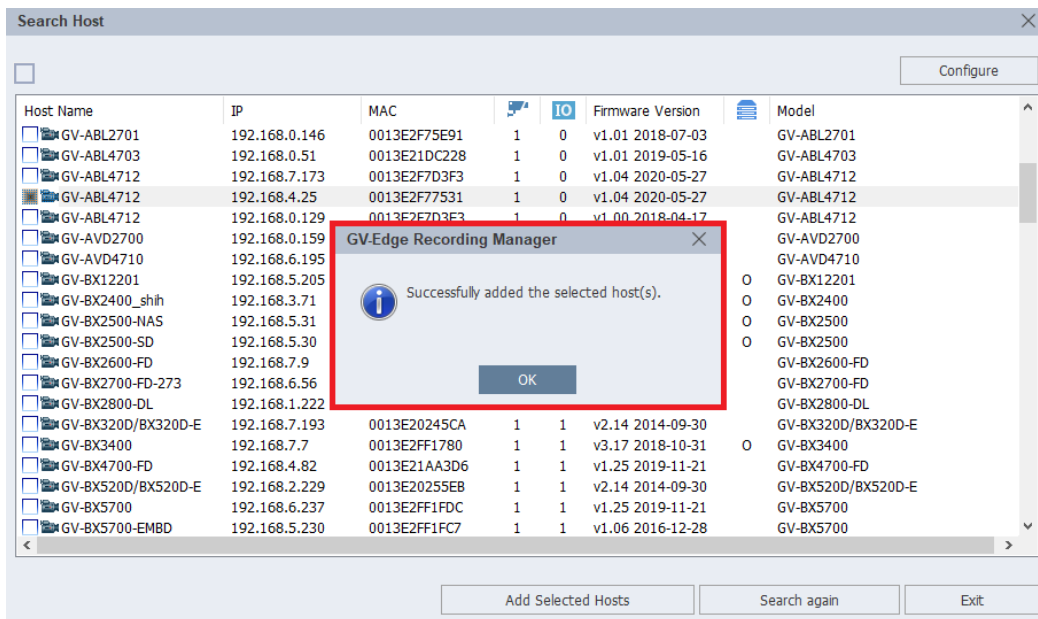


5. Type the ID and password of the device and click **OK**.

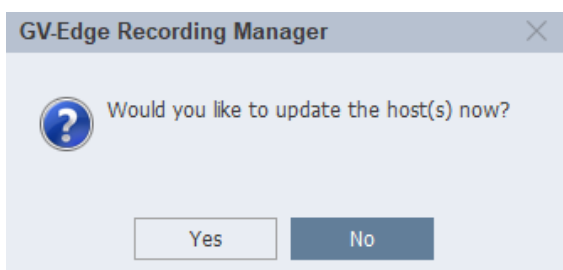
6. Repeat steps 4 and 5 to select more hosts. The selected hosts are indicated with a green plus sign.



7. Click the **Add Selected Hosts** button. When the hosts are added to the Host List, you are prompted with a message. Click **OK**.



8. When prompted to update the status of the added hosts, select **Yes** or **No**.



9. Once added, drag and drop the desired cameras from the Host List onto the Live View Window for live view display.

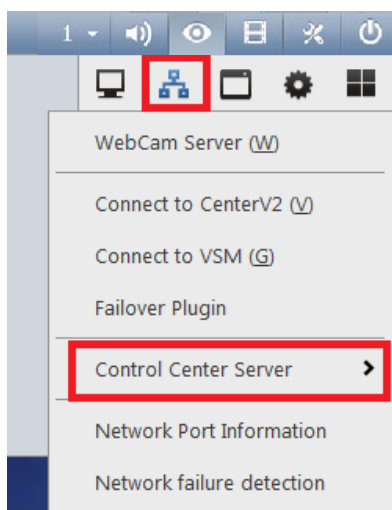
Note:

1. For more ways of adding hosts, see [2.2 Adding Hosts in GV-Edge Recording Manager User's Manual](#).
2. If a router or firewall is installed, ensure the following communication ports required by the Host Search function are open:
 - TCP/IP ports **5201** (for searching GV-DVR / NVR / VMS) and **5202** (for searching GV-IP Devices)
 - Multicast port **5200**
3. If antivirus software is installed, the Host Search function may be interfered and will not detect the available hosts. In this case, turn off the antivirus software and try again.
4. To add GV-DVR / NVR / VMS hosts, make sure that **Control Center Service** and **Remote ViewLog Service** are enabled ahead to allow remote access from GV-Edge Recording Manager (Network button > Control Center Server > Start Default Service).

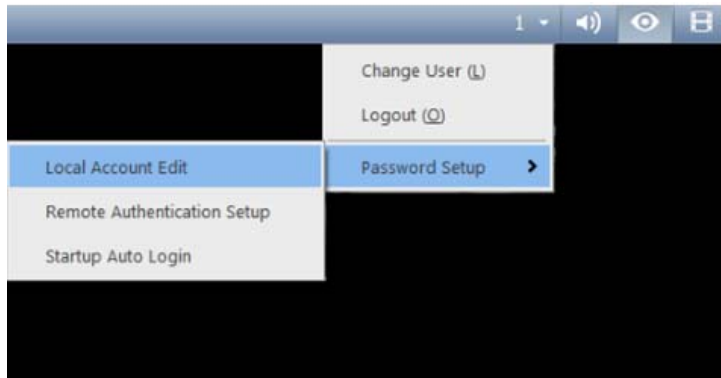
[GV-DVR / NVR]



[GV-VMS]



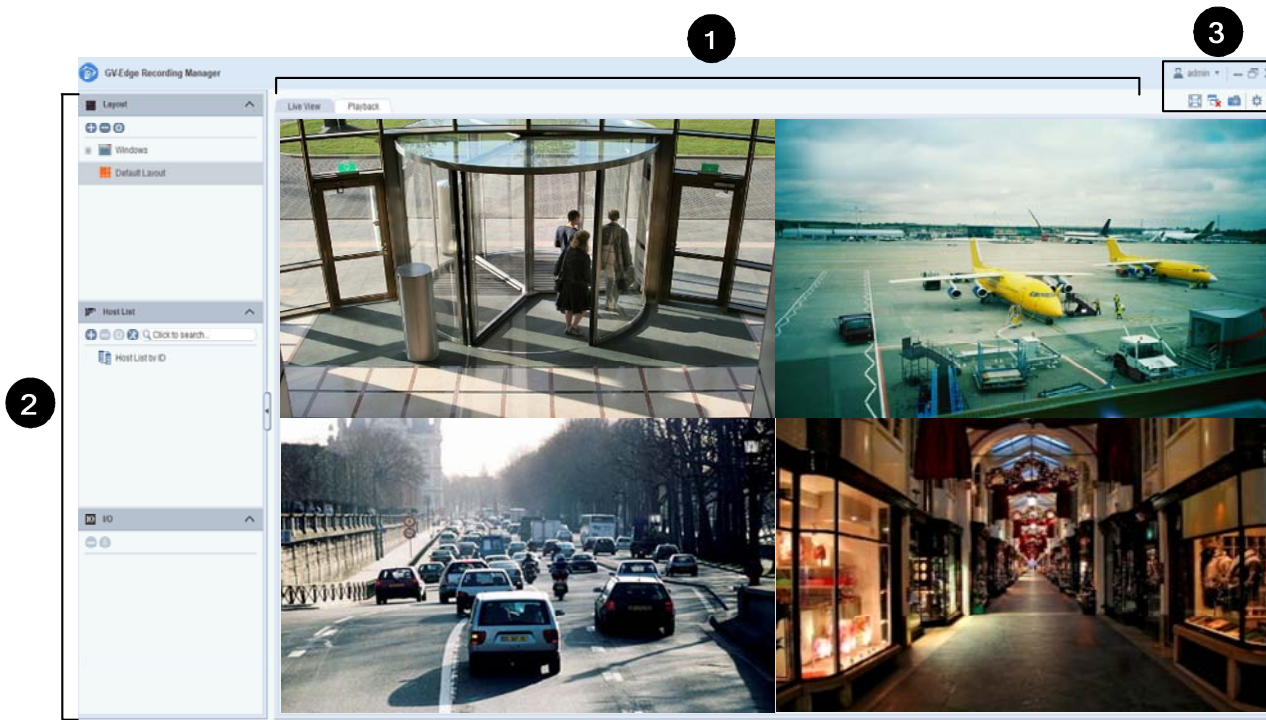
-
5. To specify the time length allowed for GV-Edge Recording Manager to access the GV-VMS in GV-VMS V16.11, click the account ID at the top of GV-VMS's main page, click **Password Setup**, and select **Local Account Edit**. In the **Control Center** tab, select the **Limit Connection Time** option and specify the time length between 10 and 3600 seconds.



2.3 Overview

2.3.1 Main Window

By default, there are three areas on the main window.



No.	Name	Description
1	Camera Channels	Displays the live views / recordings of added hosts.
2	Device Lists & Layout	Contains the hosts added to the GV-Edge Recording Manager and their I/O devices, and configures layout settings.
3	Toolbar	Contains buttons to quickly access system settings, functions and close image windows.

For more details, see [1.2 The Toolbar](#), [1.3 The Host List](#) and [4.1 The Live View Window](#) respectively in *GV-Edge Recording Manager User's Manual*.

2.3.2 Toolbar



No.	Name	Description
1	Login Account	Changes the login ID and Password of the Administrator account and switches to or enable / disable Guest account.
2	Full Screen	Diminishes all setting windows and toolbars and displays only the main screen.
3	Close All Videos	Closes all videos currently streamed on the main screen.
4	Snapshot	Takes a snapshot of a desired camera channel.
5	Configure	Contains the general settings of GV-Edge Recording Manager, imports / exports data, accesses IP Device Utility, and manages software license.

3. Configuring the NAS


You can set GV-IP Cameras and GV-Target Cameras to record to NAS (Network-Attached Storage) devices.

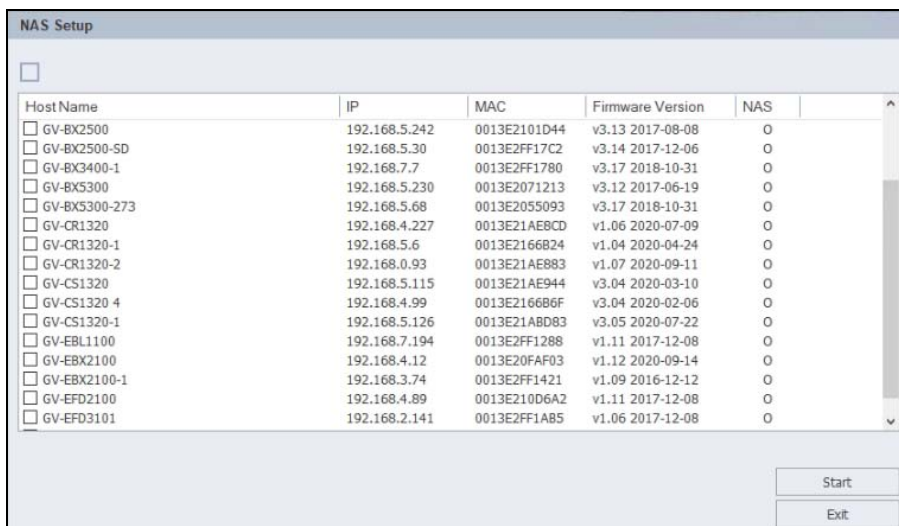
To see whether your camera models can record to NAS devices, check the [table](#).

IMPORTANT:

1. For the NAS application, it is required to use GV-IP Cameras (firmware V3.0 or later) and GV-Target Cameras (firmware V1.02 or later), GV-EFD2101/EFD3101/EVD2100/EVD3100 (firmware V1.00 or later).
 2. For performance and compatibility, it is highly recommended to use GV-NAS Systems for recording.
 3. Make sure the computer installed with GV-Edge Recording Manager is under the same LAN with the NAS devices.
-

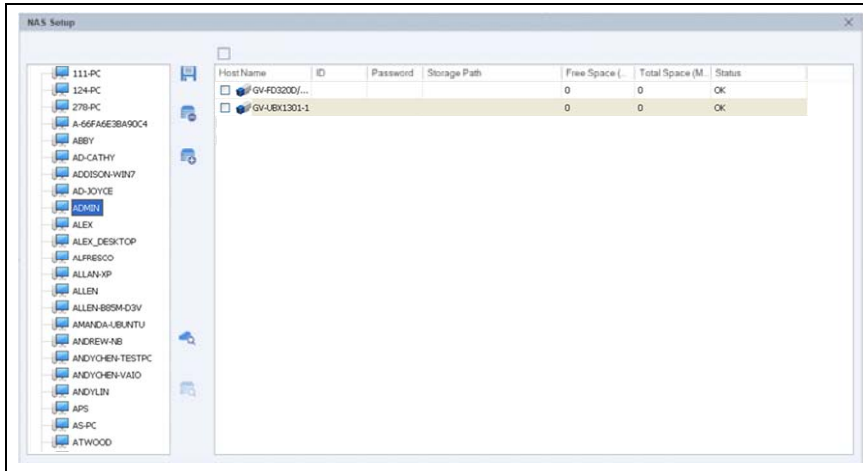
3.1 Recording to NAS

1. On the main screen, click the **Batch Update Wizard** button  from the toolbar and select **NAS Setup**. The cameras that support NAS devices appear in the NAS Setup window.

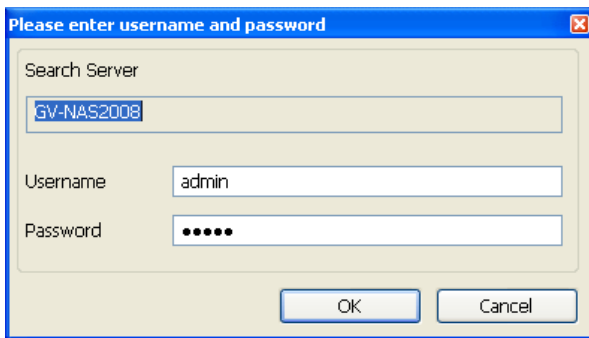


2. Select the cameras for NAS management and click **Start**. The NAS Setup window appears.

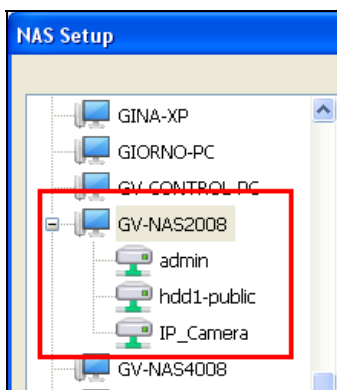
- Click the **Search for network host** button to detect the NAS installed under the LAN. The detected network hosts are listed.



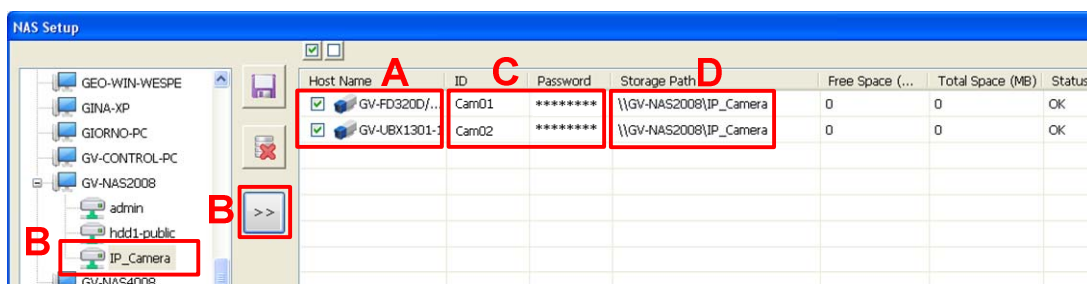
- Select a NAS from the list and click the **Search the host's network storage** button to detect its shared folder(s). This dialog box appears.





- Type the administrator username and password of the NAS device that allows for highest level of access. The default username and password for a GV-NAS System are both **admin**. The server's folders are detected and shown.
- Expand the sever to show its folders



- Assign storage paths for GV-IP Cameras.





- A. Select at least one camera.
 - B. Select a NAS folder and click the **Select this storage path for the device**  button to assign this storage path. The storage path appears in the Storage Path column immediately.
 - C. Type the ID and password of an established account of the NAS server. For example, for a GV-NAS System, type the default username **Cam01** and default password **12345678**.
 - D. In the Storage Path column, you can manually change the IP address of a GV-NAS System.
8. Click the **Save**  button to store the settings.



Note:

1. Be sure that you assign each camera to record to a different user account in GV-NAS System to avoid disrupting the recycling process. For details, see *GV-NAS System User's Manual*.
 2. For GV-NAS2008 / 4008, the default user name is **Cam01** up to **Cam08** for each of the 8 user accounts; for GV-NAS2016 / 4016, the default user name is **Cam01** up to **Cam16** for each of the 16 user accounts. The default passwords are all **12345678**. For details, see *GV-NAS System Quick Start Guide and User's Manual*.
-

3.2 Changing the NAS Storage

From the NAS Setup window (step 7 in *3.1 Recording to NAS*), select a camera, select a new NAS folder and click . The new storage path is immediately assigned. Alternatively type the storage path, ID and password of a NAS folder. Click **Save**  to apply the settings.

3.3 Deleting the NAS Storage for Recording

From the NAS Setup window (step 7 in *3.1 Recording to NAS*), select a camera and click the **Delete the selected storage path**  button. The storage is deleted. Click the **Save**  button to store the settings.

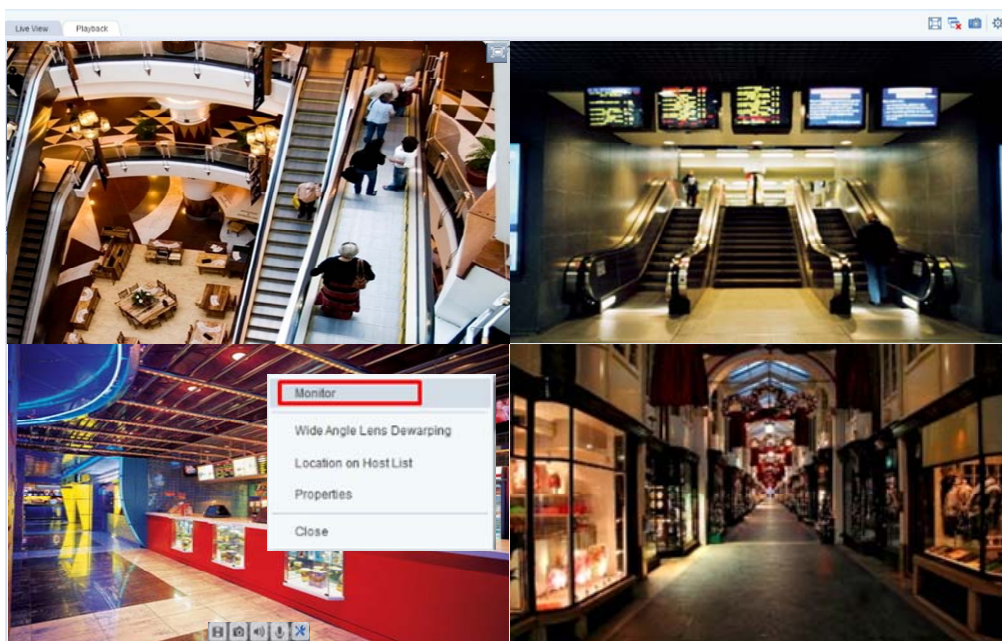
4. Enabling Host Monitoring

You can remotely enable the monitoring function on host using GV-Edge Recording Manager.




Note:

1. This function is only supported by GV-DVR / NVR / VMS, GV-IP Cameras (**except** GV-ABL / ADR / AVD / EBD / TBL / TDR / TVD series, GV-SD2322-IR / 2722-IR / 3732-IR).
2. For GV-DVR / NVR / VMS, make sure of the account used for connecting to GV-Edge Recording Manager having the privilege to enable monitoring.

From the Live View Window, right-click a live view channel and select **Monitor**.



The monitoring and recording status is indicated on each channel:

Channel Color	Monitoring & Recording Status
	Not monitoring
	Monitoring but not recording
	Monitoring and recording

For more details on the Live View Window, see *Chapter 4 Live View* in *GV-Edge Recording Manager User's Manual*.

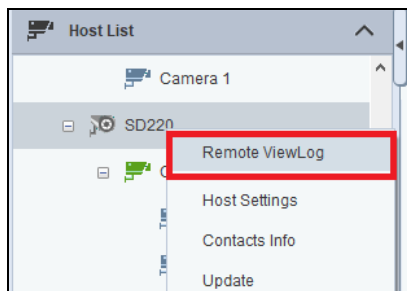
5. Accessing Playback

Follow the steps below to play back host event recordings on GV-Edge Recording Manager.

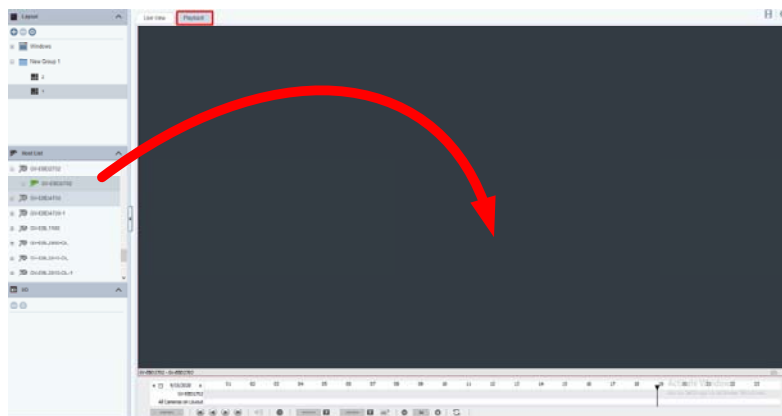
Note:

1. The Instant Playback and audio recording backup are not supported by GV-SNVR.
 2. **Remote playback from SD card** is not supported for the following models: GV-ABL / TBL Series, GV-ADR / TDR Series, GV-AVD / TVD Series, GV-EBD Series, GV-QSD5730 / 5731-IR, GV-SD2322-IR / 2722-IR / 3732-IR.
 3. For a GV-DVR / NVR / VMS host, make sure **Remote ViewLog Service** (under Control Center Service) is enabled to allow GV-Edge Recording Manager to remotely access the host for playback.
-

1. To play back the recording of a host device, choose one of the following methods:
 - A. Right-click a host/camera from the Host List and select **Remote ViewLog**.

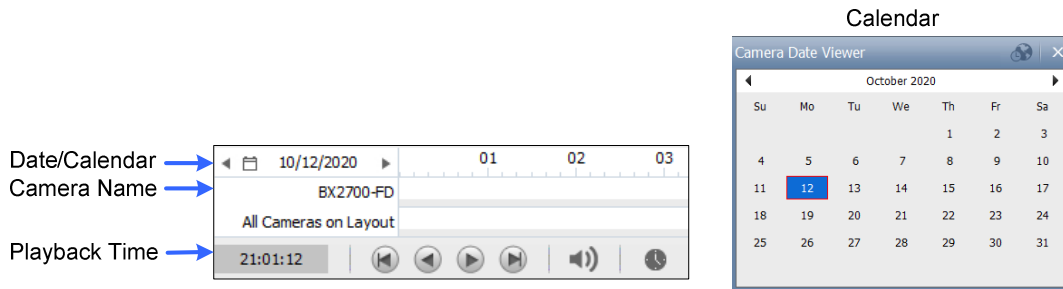


- B. Select **Playback** at the top of the main screen, and drag a host device or camera from the Host List into the playback window.

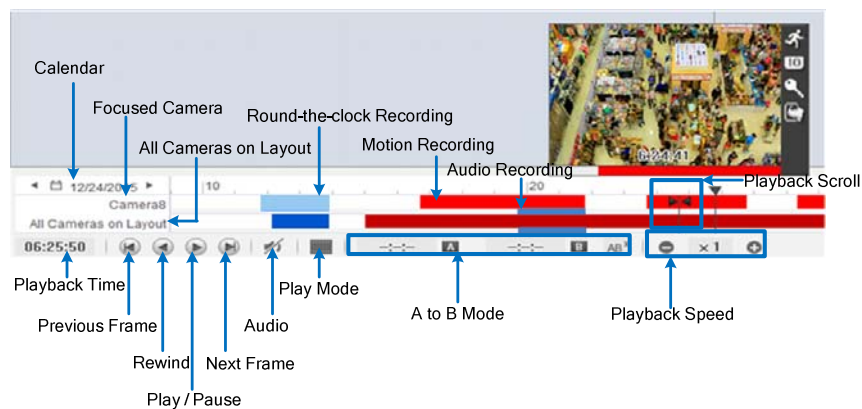
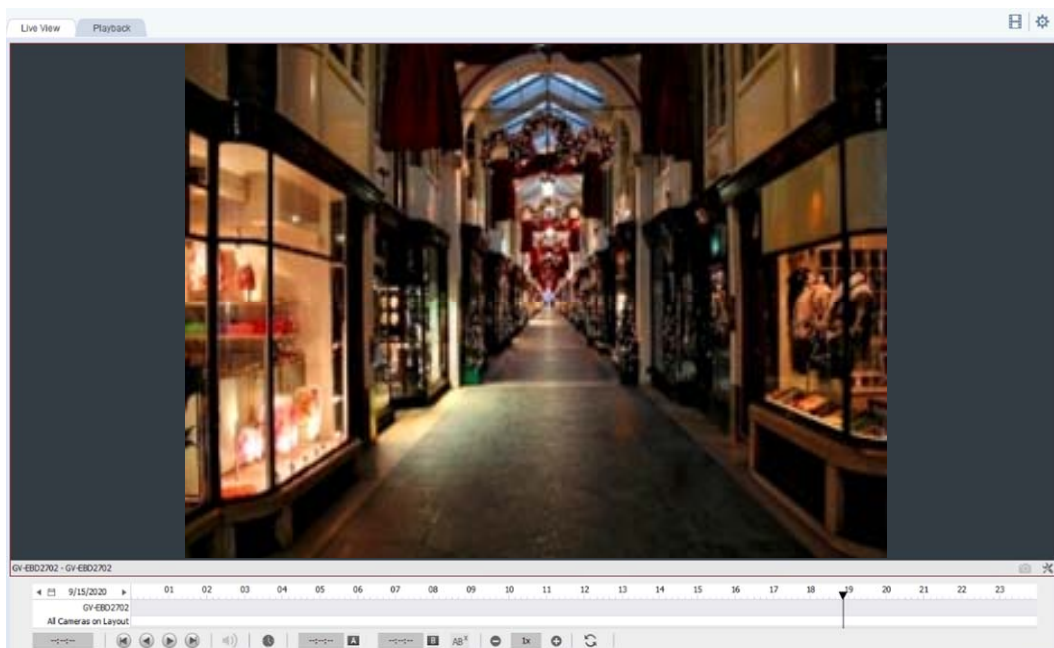


Tip: You can customize the number of channels and layout for playback using the Layout function on the left panel.

- On the timeline, click the arrows or click on the date to select a date with recordings, which are highlighted in blue, from a pop-up calendar.



- Click **Play**  to start playing.



- To play back another event, select the camera and then double-click an entry.

To access more playback features, see *Chapter 6 Playback* in *GV-Edge Recording Manager User's Manual*.

Mac Version



6. Getting Started

6.1 Installing the GV-Edge Recording Manager

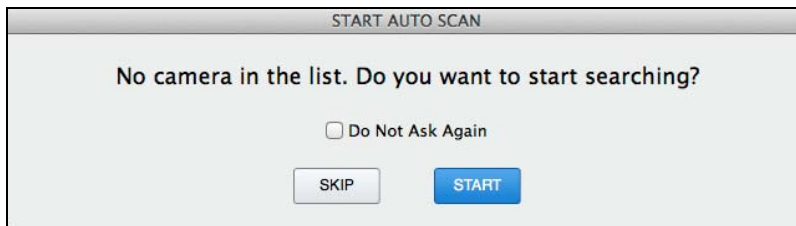
Follow the steps below to install GV-Edge Recording Manager from the GeoVision Website.

1. Go to the **Download** page of GeoVision [website](#).
2. Click the **Link** icon  of **GV-Edge Recording Manager (Mac)**.
3. Click the **View in Mac App Store**  tab. The browser redirects the content to the Mac App Store.
4. Click the **Install** button  .

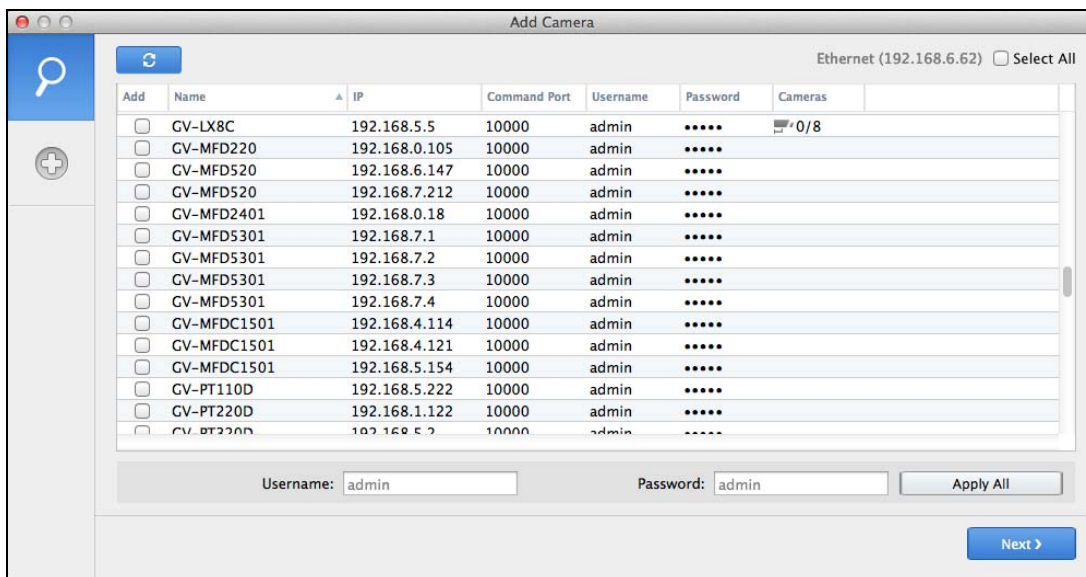
6.2 Adding Hosts

Note: To connect to GV-VMS hosts, make sure the **Webcam Server** function is enabled to allow remote access of GV-Edge Recording Manager.

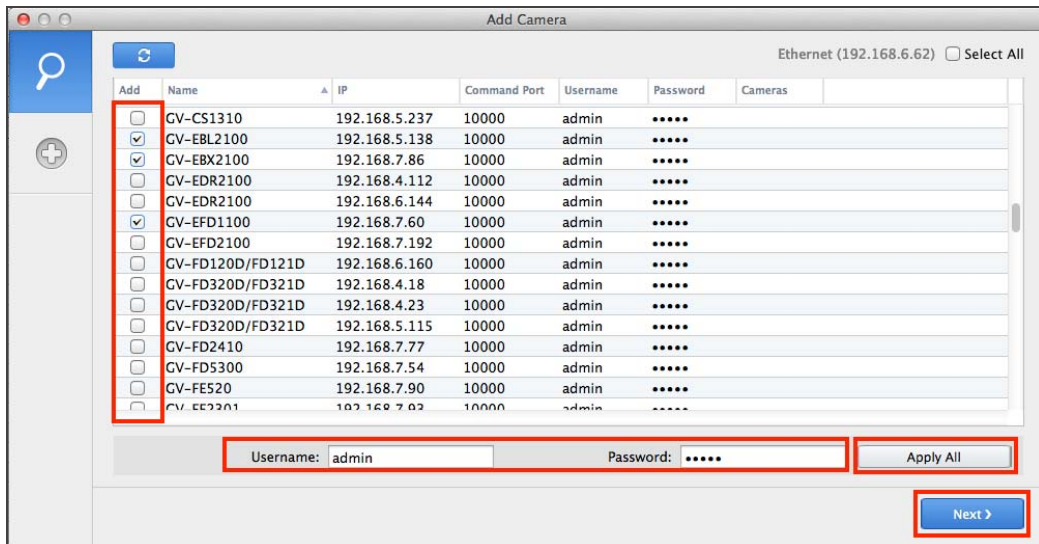
1. Execute the GV-Edge Recording Manager program.
2. Upon first startup, you are prompted to search GV-IP Devices and servers installed with GeoVision software that are under the same LAN.



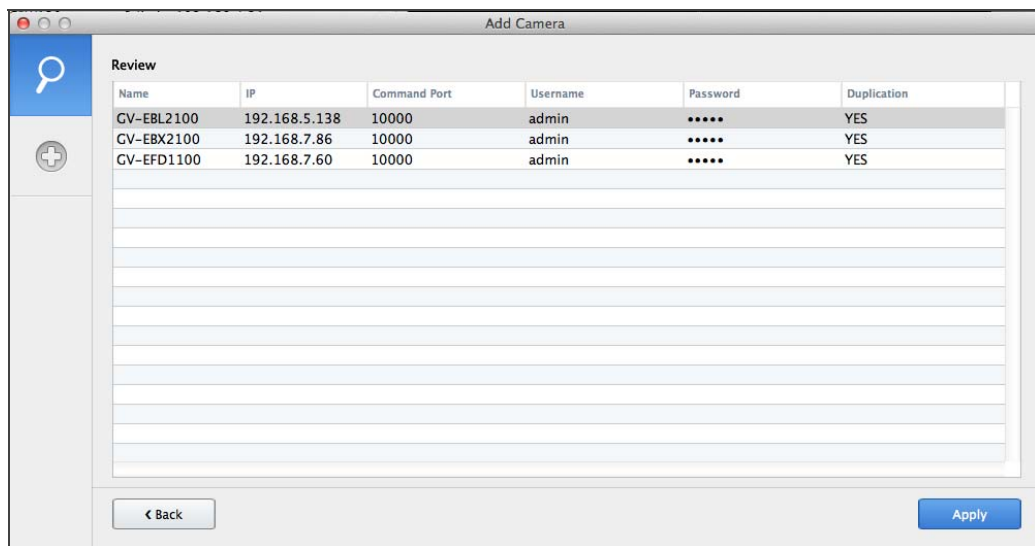
3. Click **Start** to search. The found devices and servers are listed.



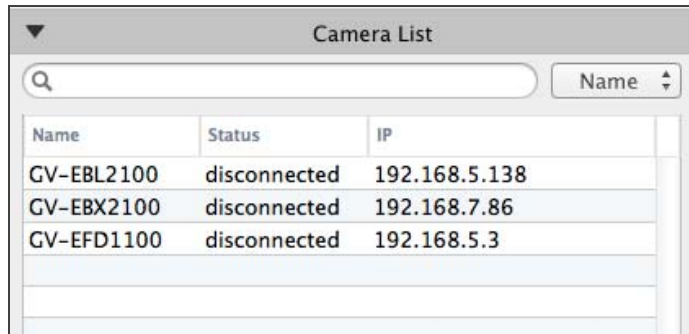
4. To add multiple hosts:
 - A. Select hosts from the Add column or click **Select All** to add all the hosts. To add a selection of hosts, click the device on the Add column.
 - B. Type the username and Password and click **Apply All** to log in the selected hosts using this set of username and password. To use different sets of username and password, type the Username and Password for each camera. Click **Next**.




- C. The selected hosts are shown.



- D. To remove unwanted hosts, click **Back** to return to the previous step to unselect them. To add these hosts to Camera List, click **Apply**. They are immediately added.

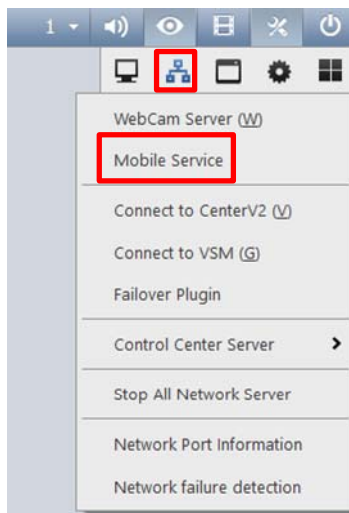


Name	Status	IP
GV-EBL2100	disconnected	192.168.5.138
GV-EBX2100	disconnected	192.168.7.86
GV-EFD1100	disconnected	192.168.5.3

5. You can display live view using any of the following method:
- Double-click a host
 - Drag and drop a host to the live view
 - Select a host on the Camera List and click 

Note:

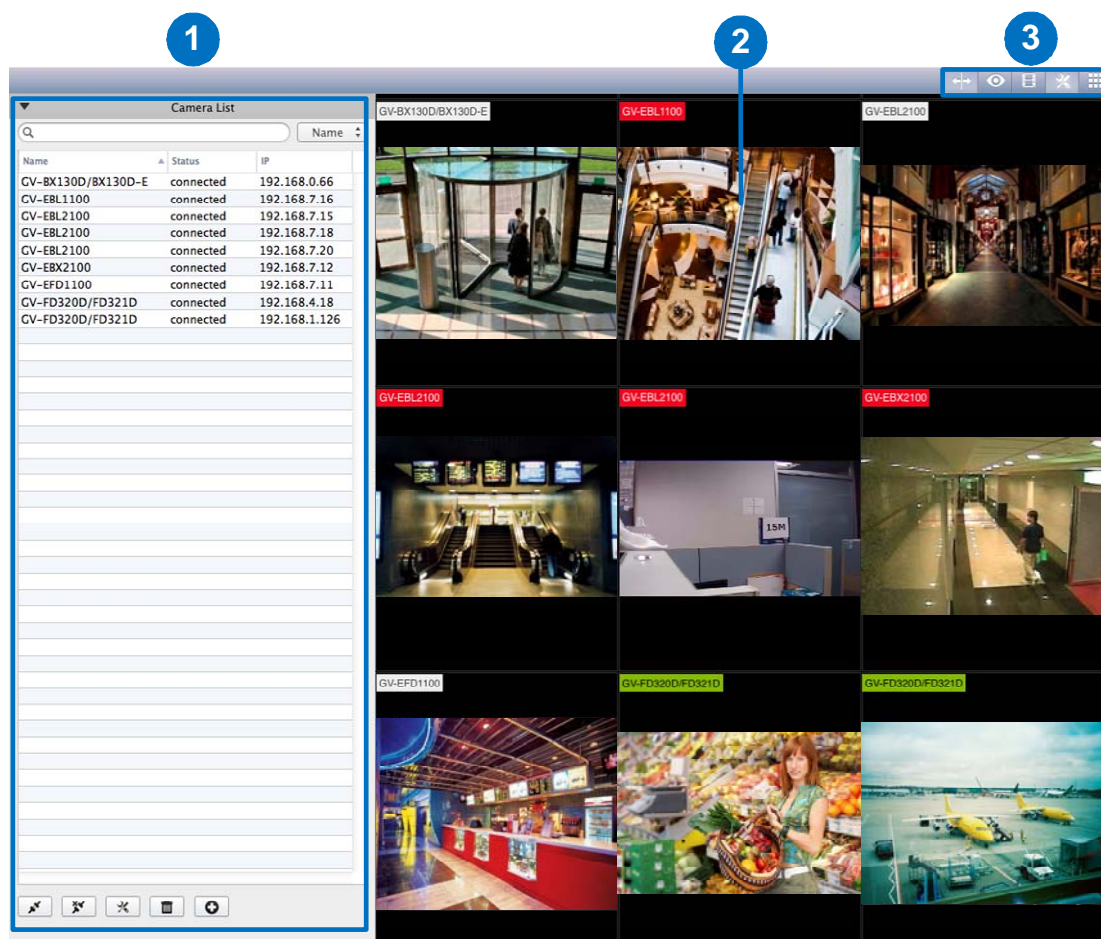
1. For more ways of adding hosts, see [10.2 Adding Hosts in GV-Edge Recording Manager User's Manual](#).
2. If a router or firewall is installed, ensure the following communication ports required by the Host Search function are open:
 - TCP/IP ports **5201** (for searching GV-VMS and **5202** (for searching GV-IP Devices)
 - Multicast port **5200**
3. If antivirus software is installed, the Host Search function may be interfered and will not detect the available hosts. In this case, turn off the antivirus software and try again.
4. To add GV-VMS hosts, make sure that **Mobile Service** is enabled ahead to allow remote access from GV-Edge Recording Manager. (Network button > Mobile Service).



6.3 Overview

6.3.1 Main Window

By default, there are three areas on the main window.



No.	Name	Description
1	Camera List	Contains the hosts added to the GV-Edge Recording Manager.
2	Live View Window	Displays live views from hosts.
3	Toolbar	Contains buttons to quickly access system settings, functions and main screen windows. For details, see <i>9.3 Toolbar</i> in the <i>Quick Start Guide</i> .

For more details, see *9.2 The Camera List* and *12.1 The Live View Window* respectively in *GV-Edge Recording Manager User's Manual*.

6.3.2 Toolbar



No.	Name	Description
1	Controller	Click to extend the Live View Window to full screen.
2	Event List	Displays events with event type, device name and detection time. For details, see <i>12.6 Viewing Event List</i> in <i>GV-Edge Recording Manager User's Manual</i> .
3	Remote Playback	Click to access the recording calendar which notes dates in which recordings are done. For details, see <i>Chapter 14 Playback</i> in the <i>Quick Start Guide</i> .
4	Setup	Click to access the Camera List for host management. For details, see <i>9.2 The Camera List</i> in <i>GV-Edge Recording Manager User's Manual</i> .
5	Layout	Click to switch the live view division. You can choose among 1, 4, 9, 16 and 36 channels.

7. Configuring the NAS

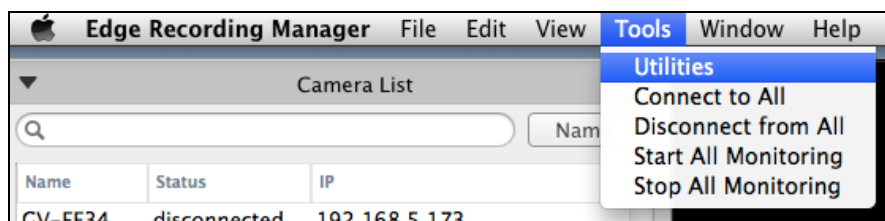
You can set GV-IP Cameras and GV-Target Cameras to record to NAS (Network-attached Storage).


IMPORTANT:


1. For the NAS application, it is required to use GV-IP Cameras (firmware V3.0 or later) and GV-Target Cameras (firmware V1.02 or later), GV-EFD2101/EFD3101/EVD2100/EVD3100 (firmware V1.00 or later).
2. For system performance and compatibility, it is highly recommended to use GV-NAS Systems for recording.
3. Make sure the computer installed with GV-Edge Recording Manager is under the same LAN with the NAS.
4. By default, all the username and password in the NAS application are **admin**. To use a different set of username and password, type in the Username and Password fields.

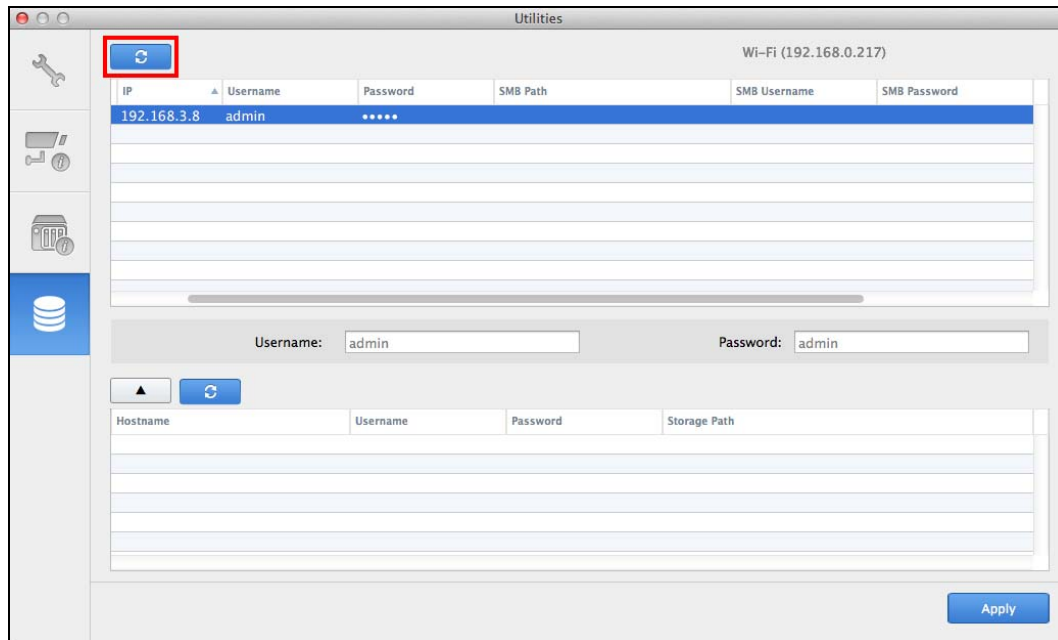
Username:	<input type="text" value="admin"/>
Password:	<input type="text" value="admin"/>


-
1. On the top of main screen, click **Tools** and then click **Utilities**. The Utilities window appears.

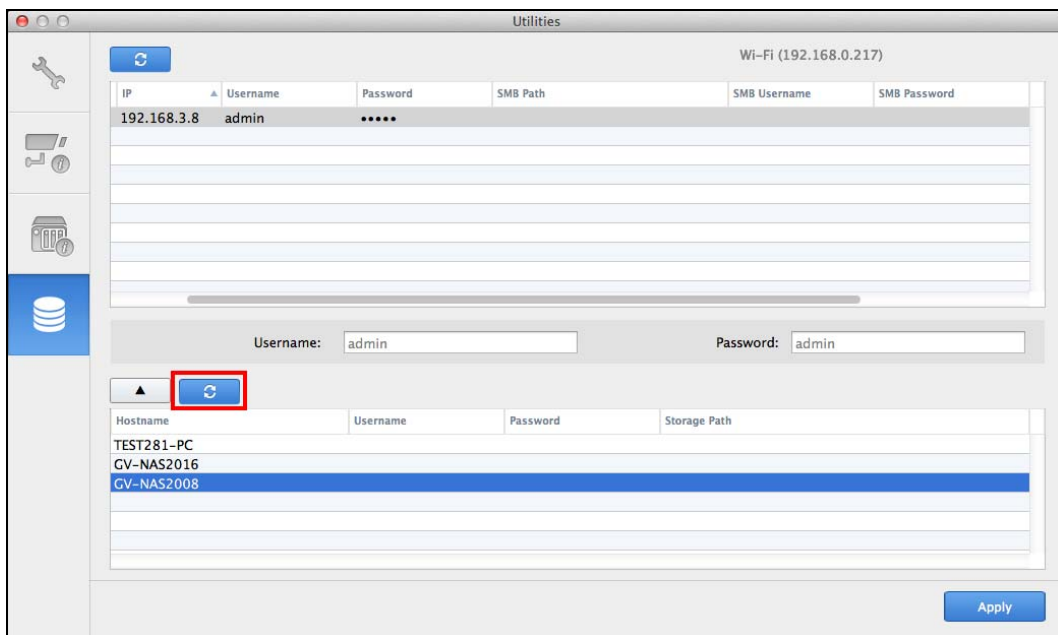


2. Click  to show the Storage Setup page.

3. Type the username and password of the cameras you wish to search and click  to browse. In this example, we search for cameras with the username and password **admin**. This dialog box appears.

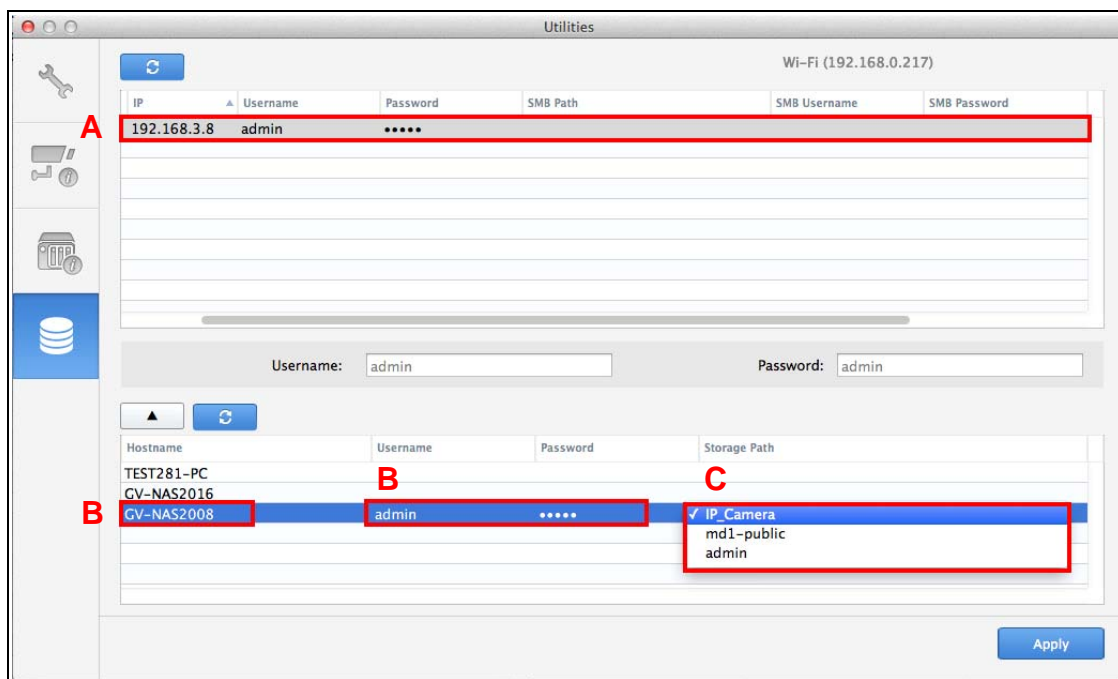


4. Select a camera and click  to browse for NAS servers under the same LAN.



7 Configuring the NAS

5. To assign the storage path, follow the steps below.

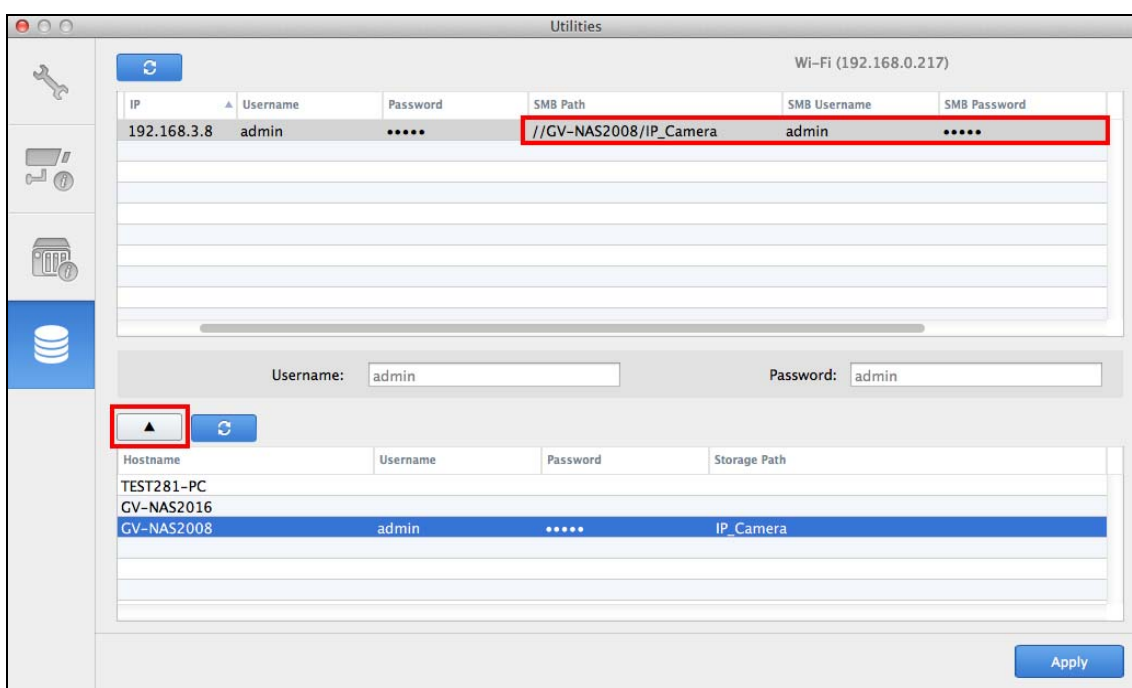


A. Select a camera from the top list.

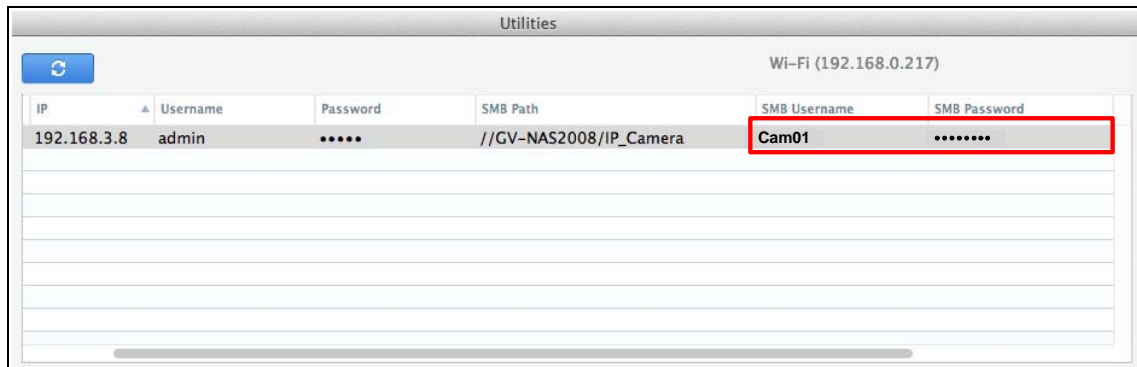
B. Select a NAS server from the bottom list and type the administrator username and password of the NAS server. For GV-NAS Systems, the default username and password are both **admin**.

C. Optionally click on the folder name to change the storage folder.

6. Click to assign this path to the camera. The storage path appears immediately in the SMB Path column.



7. Type the username and password of an established account in the NAS server. For example, the default username and password for a GV-NAS System is **Cam01** and **1234578**.



IP	Username	Password	SMB Path	SMB Username	SMB Password
192.168.3.8	admin	****	//GV-NAS2008/IP_Camera	Cam01	*****

8. To assign a different recording path for another GV-IP Camera, follow steps 6 and 7.
9. Click **Apply** to save the settings.

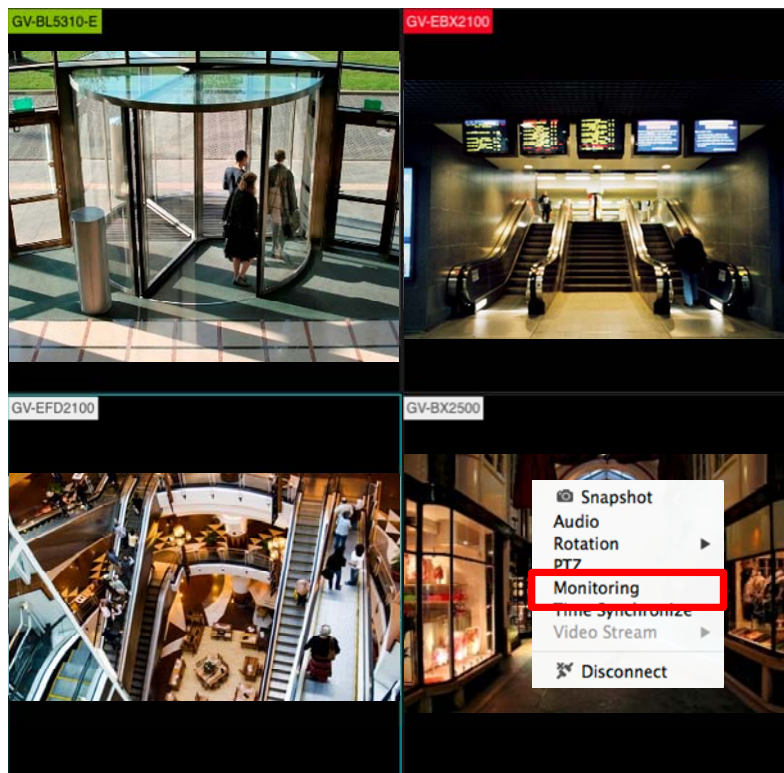
8. Enabling Host Monitoring

You can remotely enable the monitoring function on host using GV-Edge Recording Manager.

Note: This function is only available for GV-IP Devices.

Enable Monitoring for a Single Channel

Right-click a live view from the Live View Window, and then select **Monitoring**. Select the same option again to disable.

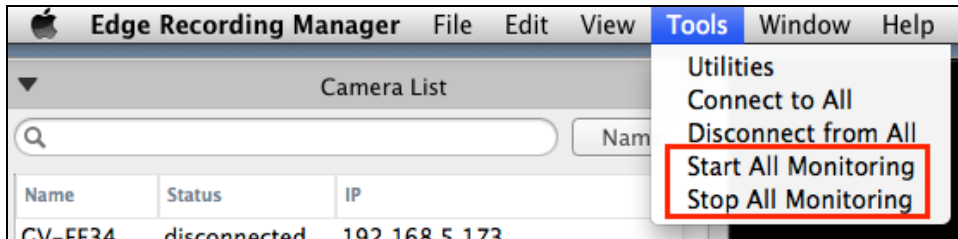


The monitoring and recording status is indicated by the color of device name on the Live View Window:

Channel Color	Monitoring & Recording Status
GV-BX2500	Not under monitoring
GV-BL5310-E	Under monitoring but not being recorded
GV-EBX2100	Under monitoring and is being recorded

Enable Monitoring for All Channels

From the top of the main screen, select **Tools** and then select **Start All Monitoring**. To disable monitoring, select **Tools** again and then select **Stop All Monitoring**.





For details on the Live View Window, see *Chapter 12 Live View* in *GV-Edge Recording Manager User's Manual*.

9. Accessing Playback

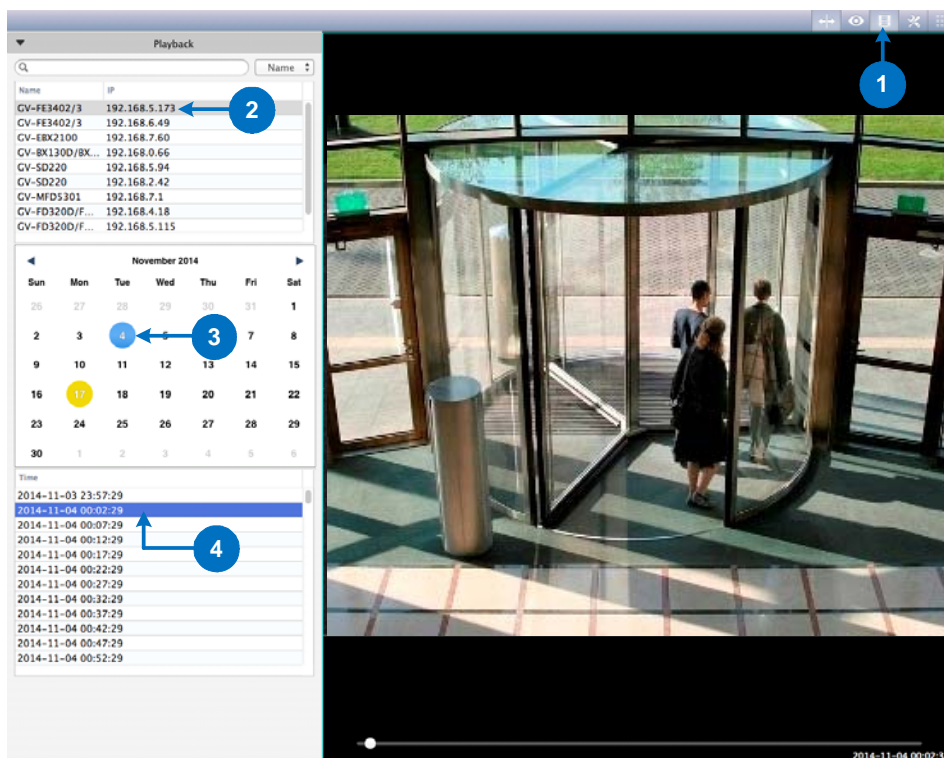
You can remotely play back host recordings on GV-Edge Recording Manager. Follow the steps below to playback:

Note:

1. For a GV-DVR / NVR / VMS host, make sure **Remote Viewlog Service** (under Control Center Service) is enabled ahead to allow GV-Edge Recording Manager to remotely access the host for playback.
2. Audio playback is not supported by the Mac version of GV-Edge Recording Manager.

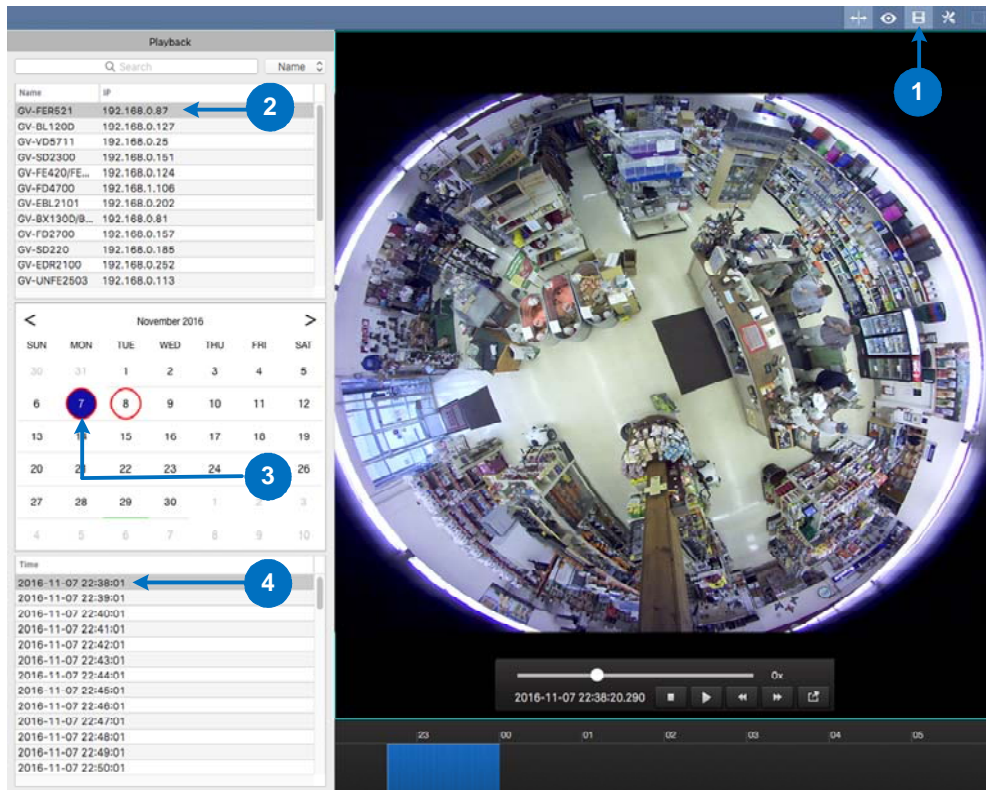
1. Click the **Playback** button  on the main window. The Playback page appears.
2. Select a device from the left. A calendar appears below.
3. Click to select a date for playback. Recordings of the selected date are listed (if any).
 - On AVI Player: The current date is highlighted yellow and the selected date blue.
 - On MPEG4 Player: The current date is highlighted blue, the selected date blue and dates with recordings are circled red.
4. Click an entry and click . The recording is immediately played back.

[AVI Player] Click an entry to play back.

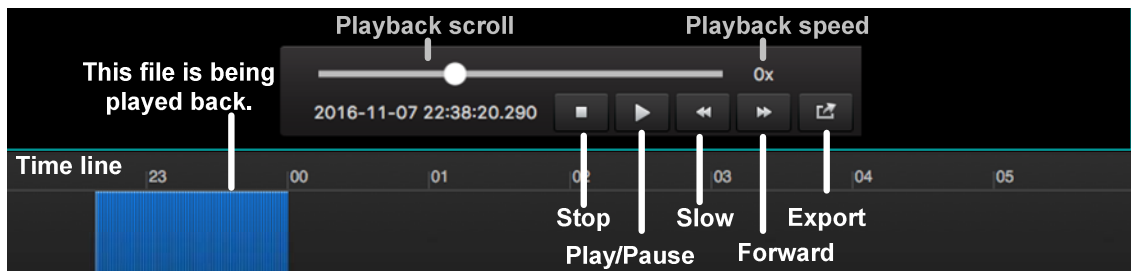


[MPEG4 Player]

Files saved on GV-NAS Systems are played back by the MPEG4 player.



The MPEG4 player contains a control panel and a timeline.



- Each recording entry is represented by a blue block. Click to play back.
- Use the mouse scroll to change the displayed hours of the timeline.
- Hold and drag the hour numeral to move to different parts of the timeline.

For details, see *Chapter 14 Playback* in *GV-Edge Recording Manager User's Manual*.