

E-Plex[®] 7900

RFID Electronic Lock with Enterprise Software



Next generation E-Plex electronic wireless locks

With a streamlined design, this heavy duty electronic lockset is built for performance. The most versatile E-Plex model to date, it functions in standalone or wireless modes for cylindrical, mortise and exit trim applications. The E-Plex 7900 when used with Enterprise software, offers the same trusted function and reliability customers have come to love with other E-Plex product offerings. With variable models each designed to function with a designated list of credential types, E-Plex 7900 can be trusted in many access control environments.

Proximity (125kHz)

- HID compatible 125kHz prox technology
- HID corporate 1000 (35, 48 bit)
- HID 26 bit

MiFare

- MiFare Classic (CSN Only)

iCLASS Legacy

- 13.56 MHz iClass Classic, HID Public Keys
- HID Corporate 1000 (35, 48 bit)
- HID 26, 37 bit
- MiFare Classic (CSN Only)

A cost effective wireless lock solution

The E-Plex 7900 wireless model integrates with dormakaba Enterprise software using a ZigBee wireless network, which creates a two-way communication from lock to Enterprise software. E-Plex 7900 can also function on networks utilizing other E-Plex wireless locks using the same credentials.

- Requires Enterprise Version 4.2 or higher.
- Requires Gateway firmware V 2.0.78 or higher. Existing Gateways can be updated over the air with gateway firmware V.2.0.76 or higher (older versions may require factory update)
- Requires optional command card set based upon lock card technology for programming. (Retain for future programming)

E-Plex 7900 added benefits

Integrated wireless access control

- Functions with dormakaba Enterprise software.
- Can be utilized in conjunction with E-Plex 3600/3700 and E-Plex 5600/5700 wireless locks.

No push buttons

- New integrated RFID reader.

Streamlined design

- Less projection from door.
- Integrated wireless antenna.

More secure

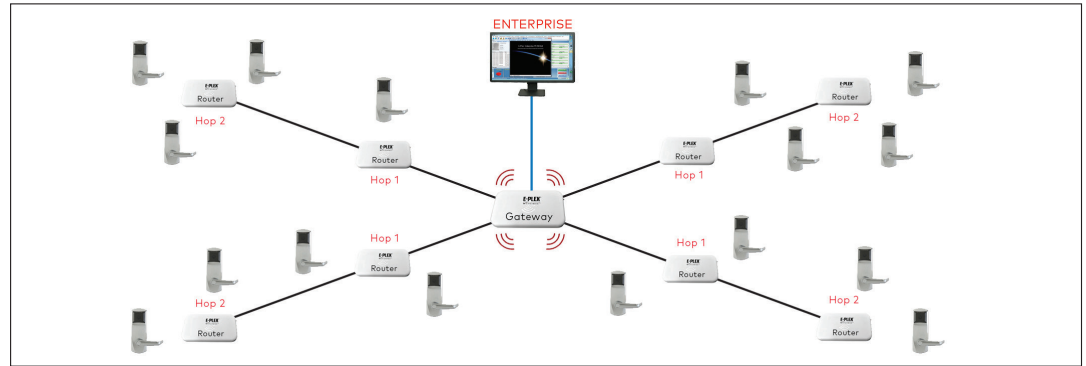
- Batteries and wireless antenna on the secure side of the door.
- Offers door monitoring capabilities.

Easier to see visual indicators

- Top mounted LED indicators.

Typical E-Plex 7900 integrated wireless application

- Up to 100 gateways per network.
- 100 devices (locks/routers) per gateway.
- Up to 8 routers per gateway.
- Locks/routers can be up to 2-hops from gateway.



Specifications

Description	Heavy duty electronic lockset with clutch mechanism and built-in contactless RFID reader
Handing	Cylindrical lock is dual handed. Factory handed mortise (left or right) preferred; field reversible levers
Levers (inside & outside)	ADA compliant, outside lever free to rotate upward and downward in locked mode. Lever clearance (space from end of lever to door): Long Lever: 3/8" (9.5mm lever clearance) Short Lever: 2" (51mm lever clearance) Elevon & Gala Lever: 2" (58mm lever clearance) (inside levers only)
Key Override	Ilco KIL cylinder, keyed-alike, keyed different (includes adapter for various KIL cylinders), Best small format IC prep 6-7 pin (core not included)
Latch / Deadbolt	Cylindrical - 1/2" bolt 1" (25 mm) Deadbolt (for ASM mortise) solid metal, projected by inside thumbturn and retracted with the 3/4" latch by the interior handle, emergency override or authorized keycards.
Door Thickness	From 1 3/8" to 2 1/2" (35mm to 66mm)
Shipping Weight	8.5 lbs (3.8 kg)
Housing Construction	Cast zinc alloy (outside housing levers and thumbturn), stainless steel inside housing
Finishes	Satin chrome, Bright brass, Bright chrome, Dark bronze, Satin brass, Satin nickel, Ultra satin chrome.
Standard Backset	2 3/4" (70mm) backset or optional 2 3/8" (60mm) backset also available for cylindrical lock 2 3/4" (70mm) backset for mortise lock.
Locking Options	Cylindrical latch (2 3/4" or 2 3/8" backset). Mortise 2 3/4" with 1 1/4" faceplate (optional 1" available - call for lead time)
Batteries	Alkaline batteries (4 AA). Low battery indicator in software and on lock. Battery life of 1.5 years* based on estimated usage.
Programming & Audit Trail	Lock memory stores 30,000 audits, max 10,000 users, wireless locks using Enterprise software stream lock transactions in real time with on-line programming. Stand-alone lock programming and audit retrieval requires PC M-Unit (available soon).
Programming Command Card	Command card set matching card technology of lock ordered is required to be purchased separately to program all locks with that same card technology (not included with lock)
Accessibility Standard/Certification	ADA compliant, BHMA/ANSI Grade 1, Florida Windstorm (ASM Mortise), ULC-S104/UL10C, FCC Part 15 Class C and CE directive 2014/53/EU and Industry Canada.
Operating Conditions	-31°F to 149°F (-35°C to 65°C) 0% to 85% non-condensing humidity at 86°F (30°C) (iClass based locks -21°F to 149°F (-29°C to 65°C))
Support	Call 1 800 849 8324 for E7900 support using Enterprise software.

* Battery life based on proximity reader at 10 door openings per day. Lower battery life expected with 13.56MHz smart card readers. Battery life may vary based on environmental conditions and other factors.

© dormakaba 2019. Information on this sheet is intended for general use only. dormakaba reserves the right to alter designs and specifications without notice or obligation.

dormakaba USA Inc.
2941 Indiana Ave.
Winston-Salem NC 27105
T: 1 800 849 8324