



Alarm Controls No Touch Series

Hands-Free
Request to Exit Switches



Alarm Controls No Touch Request to Exit Activation Switches

use infrared sensors to reliably allow safe egress or activation of a device with a simple hand presentation.

These surface mounted request to exit solutions provide greater flexibility and control for sensitive applications, without the need to make costly modifications, extending touch-free access and egress in an easy and affordable way.

- ▶ Designed for short range applications (up to 4") that require precise activation
- ▶ Quickly upgrade existing applications to code compliant no touch solutions using existing wiring
- ▶ For use with swinging and sliding door applications
- ▶ Designed for use with and without automatic door operators
 - *Can include electric strike, electrified deadlatch, exit devices with latch retraction, magnetic locks. Subject to the approval of the local AHJ.*
- ▶ Direct replacement for traditional "request to exit" push buttons



NTS

DC powered, wired output

- SPDT relay
- 12 or 24 VDC hard powered
- Brighter LED Halo for better visual indication
- 0 to 35 second selectable time delay
- Hard-wired connection allows for faster hand detection and activation

Ideally Designed For: Touchless option for traditional push buttons in new construction applications where DC hard power is available



NTB

Battery powered, wired output

- DPDT relay
- Battery or 12 or 24 VDC hard powered
- Low battery LED status indicator
- 0 to 10 second selectable time delay
- Audible feedback (buzzer) configurable via jumper
- Obstruction detection



Plug-In DC Line
Powered Cable
Adapter Harness
(Optional)

Ideally Designed For: Retrofit applications where power functionality (battery or hard-wired) offers installation and performance flexibility



Specifications

Certifications & Listings

- **NTB:** Additional testing and UL certifications pending.

Electrical

- **NTS:** SPDT relay rated 2A at 30 VDC/VAC; Operates on 12 or 24 VDC hard power
- **NTB:** DPDT relay rated 2A at 30 VDC/VAC; Operates on 2x AA Alkaline Batteries or 12 or 24 VDC hard power

Operating Temp -13 °F to 131 °F [-25 °C to 55 °C]

Common Applications

Commercial building/lobby entrances

Prevent bottleneck and reduce touch points

Common Areas: waiting rooms, restrooms, corridors, cafeterias

Easier to sanitize and limit touch points

Meeting Spaces: meeting rooms, patient rooms, private offices

Reduce the number of touch points



How to Order

NT	B	-1	A	-BK
Series	Model	Plate	Screen	Finish
NT No Touch	S DC powered, wired output	1 Single Gang	(Blank) English - Standard "Wave to Open"	(Blank) Stainless Steel
	B Battery powered, wired output	2 Double Gang	FR French*	BK Black
		3 Narrow Stile	SP Spanish*	DURO Duranodic Dark Bronze
			A ADA**	



NTB-1A

*French and Spanish "Wave to Open" options are only available with NTS at this time.

** ADA option is only available with the NTB in Stainless Steel at this time

Hands-Free Competitor Crossover Chart

Brand	Single Gang	Double Gang	Narrow Stile	Power Source
Seco-Larm	SD-927PKC-NEQ (English)	—	SD-9163-KSQ (English)	12/24V AC/DC
	SD-927PKC-NFQ (French)		SD-9163-KS1Q (Spanish)	
	SD-927PKC-NSQ (Spanish)			
SDC	474U	474DU	N/A	12/24V DC
Alarm Controls	NTS-1 (English) NTS-1FR (French) NTS-1SP (Spanish)	NTS-2	NTS-3	12/24V DC
Camden	CM-221/A42	CM-221/A42W	CM-221/A42N	—
	CM-324/41S	CM-324/41WS	CM-324/41N	12/24V AC/DC
Alarm Controls	NTB-1	NTB-2	NTB-3	DC or Battery
Camden	CM-331/41S	CM-331/41W	CM-331/41N	12/24V AC/DC
	CM-332/41S	CM-332/41W	—	12/24V AC/DC
	CM-333/41S	—	—	Battery



Accessories (available separately)

Surface Mounted Boxes:

- **SMB-01** Single-gang surface mount box with (2) N/O tamper switches
- **SMB-01A** Single-gang surface mount box with (2) N/C tamper switches
- **30203** Single-gang weatherproof surface mount back box
- **SMB-3** Narrow-stile (1-3/4" wide) jamb surface mount box in a US28 clear-anodized aluminum finish
- **SMB-3D** Narrow-stile (1-3/4" wide) jamb surface mount box in a US40 Duranodic aluminum finish

Related Products for Touchless Solutions



SREX-100 Exit Motion Sensor

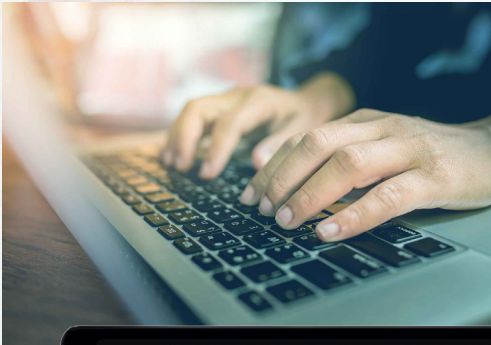
Active focused infrared motion sensor specifically designed for request to exit applications. SREX-100 has an adjustable narrow activation zone for increased accuracy.

RT Series Remote Transmitters

Wireless remote transmitters that allow access control for up to three doors from one device.

- **RT-1:** One receiver, two transmitters
- **RT-3:** Three receivers, one transmitter
- Available kit options for additional transmitters



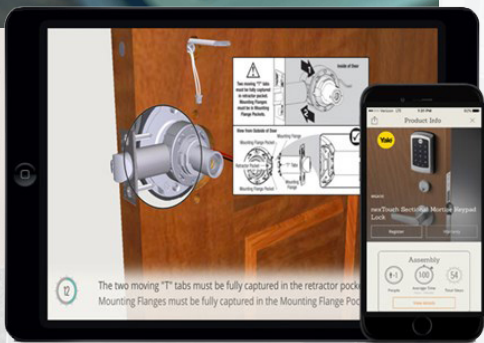


Support Tools

Alarm Controls offers a number of digital tools to empower success with our products. Use these tools to provide general product information, simplify installation, or troubleshoot an issue in the field.

- Virtual Instructor Led Training
- Digital Asset Library
- Technical Documentation, Tech Tips, Troubleshooting FAQs

alarmcontrols.com/en/tech-info
alarmcontrols.com/en/training



Alarm Controls No Touch Series

Hands-Free Request to Exit Switches



USA

(p) 800.645.5538 | (f) 631.586.6500
alarmcontrols.com

customerservice.alarmcontrols@assaabloy.com
techsupport.alarmcontrols@assaabloy.com

Custom Product Inquiries

custom.alarmcontrols@assaabloy.com

CANADA

(p) 800.461.3007 | (f) 800.461.8989
assaabloydss.ca

Customer Support in Canada

sales.dss.ca@assaabloy.com



alarmcontrols.com

Patent pending and/or patent www.assaabloydss.com/patents

Copyright © 2021, Hanchett Entry Systems, Inc., an ASSA ABLOY Group company. All rights reserved. Reproduction in whole or in part without the express written permission of Hanchett Entry Systems, Inc. is prohibited. AC-031-0621

Printed in the U.S.A.

Part of ASSA ABLOY