

## DS-A80624S

### Network Storage Device

#### Introduction:

As the cost-effective network storage device, Hikvision DS-A80624S is developed on the controller architecture and adopts multiple advanced technologies, including video streaming technology, RAID technology, intelligent technology, etc. It integrates camera management, video storage, live view, search, playback, download and other functionalities. With this product, you can build a small-scale video management platform independently, or establish a medium/large-scale video management system incorporation with the supporting service platform.

Due to these features, DS-A80624S is widely applied to security surveillance projects of the bank, school, store, enterprise, hotel, etc.

#### Available Model:

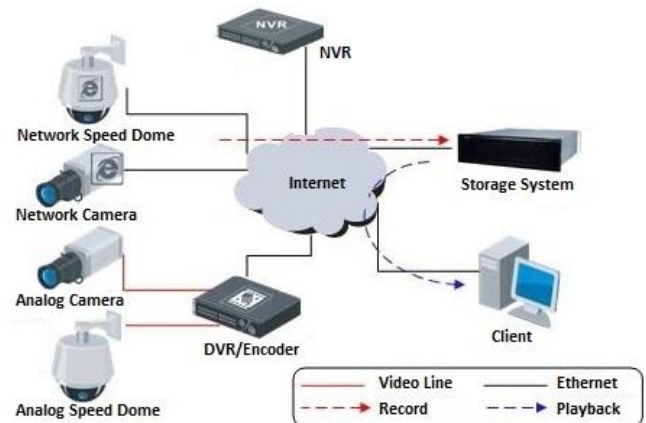
DS-A80624S

#### Main Features:

- 64-bit embedded multi-core processor with 4GB high-speed buffer; 6Gbps SAS transmission; SBB2.0 technology
- Connectable to encoding devices (IPC/DVR/encoder/NVR) using standard stream media protocol such as RTSP, ONVIF, PISIA, etc.; Connectable to encoding devices from third-party manufacturers such as AXIS, PELCO, Bosch, Canon, Panasonic, SAMSUNG, SONY, etc.
- Support 300-ch 2Mbps concurrent writing; 20-ch synchronous playback
- Integrated with CVR/IPSAN application service
- Support built-in stream media module to forward real-time video stream
- Up to 24 SATA hard disks (hot-plug) can be installed; Up to 144TB capacity is supported for each device and 2-level HDD Enclosure be cascaded; Up to 432TB capacity supported for each system
- Support RAID 0, 1, 3, 5, 6, 10, 50, JBOD, hot spare
- Support multiple recording types, including continuous recording, manual recording, main and sub stream recording; motion recording, sensor alarm recording, video loss alarm recording, etc.
- Search, play back, download record files by type or time
- User friendly B/S or C/S interface supporting one-touch quick setting
- Multiple alarm linkage actions such as acousto-optic, text message, email
- Download device logs to USB flash drive automatically
- 2 Gigabit Ethernet ports supporting network interface bonding
- Support N+1 hot spare system
- Automatic Network Replenishment (ANR) ensuring data integrity
- Data backup increasing data security
- Lock and archive the key video file for protection



#### Typical Application:



#### Performance Index:

Mode	IPSAN	CVR
<b>Resolution</b>		
D1 (2Mbps) Record + Playback	180-ch	320-ch

**Specifications:**

<b>Model</b>	<b>DS-A80624S</b>	
<b>Controller</b>	<b>Processor</b>	64-bit multi-core processor
	<b>High-speed buffer</b>	4GB (expandable to 32G)
<b>Video/Audio input and output</b>	<b>Record + Playback</b>	IPSAN:180-ch (2Mbps) CVR:320-ch (2Mbps)
<b>General</b>	<b>HDD slot</b>	24
	<b>HDD interface</b>	SATA /1TB,2TB,3TB,4TB,6TB
	<b>Hot-swap disk</b>	Supported
	<b>RAID level</b>	RAID 0, 1,3,5,6,10,50,JBOD, Hot-Spare
<b>Storage management</b>	<b>Disk management</b>	S.M.A.R.T. ((Self-Monitoring, Analysis and Reporting Technology)
	<b>LUN management</b>	iSCSI Volume, Record Volume
	<b>Data protection</b>	Real-time backup of system information, LUN clone
<b>Record management</b>	<b>Recording type</b>	Continuous/ Manual / Main and Sub Stream / Motion / Sensor, etc.
	<b>Recording backup</b>	Local backup; Remote backup
	<b>Recording protection</b>	Lock key video file for protection, N+1 hot spare system, ANR, video loss alarm
	<b>Search mode</b>	By time / type
<b>Device management</b>	<b>Download mode</b>	Quick download, batch download, segment download, merging download
	<b>Management method</b>	Web-based GUI, CLI serial port, integrated management of multiple units
	<b>Alarm type</b>	Sound, Flash LED, Email, SMS, Warning on device management page
	<b>Log download</b>	Auto-down load by USB flash drive, Remote backup via web browsing
<b>Network</b>	<b>Protocol</b>	RTSP / ONVIF / PSIA / iSCSI
<b>External port</b>	<b>Data port</b>	2×1000M self-adaptive Ethernet interface
	<b>Management port</b>	1×100M self-adaptive Ethernet interface
	<b>SAS expansion port</b>	1 (6Gbps)
	<b>VGA output</b>	1
	<b>COM interface</b>	1 for hyper terminal and mobile phone alarm/UPS
	<b>USB interface</b>	2
<b>Others</b>	<b>Power supply</b>	Redundant
	<b>Consumption (with HDD)</b>	Working Consumption: ≤ 395W Rating Power Consumption: ≤875W
	<b>Temperature</b>	Operating: 5°C-35°C; Storage: -20°C-70°C
	<b>Humidity</b>	Operating: 20%-80% RH( non-freezing, non-condensing); Storage: 5%-90% RH( non-freezing, non-condensing)
	<b>Chassis</b>	Standard 19-inch rack-mounted 4U chassis
	<b>Dimensions (W×H×D)</b>	445×175×746mm
	<b>Weight</b>	≤40Kg