

Model C

The Model C is a manual wall- or ceiling-mounted screen for larger rooms with permanently lubricated steel ball bearings combined with nylon bushings and heavy-duty spring assembly for smooth operation.

The Model C does not feature the Controlled Screen Return for quiet and smooth return to the case. See Model C with CSR for this feature.

Features

- Standard white powder-coated finish; available in black or veneer upon request
- Includes pull cord
- Optional floating mount brackets for wall or ceiling stud installation can be aligned left or right. Veneer finish can also be added to the bracket.

Optional Accessories:

- Ceiling Trim Kit for Model C and Model C with CSR
- Floating Mounting Bracket for Model C and Model C with CSR
- Green Laser Pointers
- Mounting and Extension Brackets
- Pull Rod
- Red Laser Pointers
- RF PowerPoint Remote with Green Laser Pointer
- Tilt Lock



16:9 HDTV Format

Viewing Area (H x W)		Nominal Diagonal		Overall Case Length	
in.	cm	in.	cm	in.	cm
45" x 80"	114 x 203	92"	234	87 ⁵ / ₁₆ "	222
52" x 92"	132 x 234	106"	269	99 ⁹ / ₁₆ "	252
54" x 96"	137 x 244	110"	279	103 ³ / ₁₆ "	262
58" x 104"	147 x 264	119"	302	111 ¹ / ₁₆ "	283
65" x 116"	165 x 295	133"	338	123 ³ / ₁₆ "	313
78" x 139"	198 x 353	159"	404	147 ⁷ / ₁₆ "	374

16:10 Wide Format

Viewing Area (H x W)		Nominal Diagonal		Overall Case Length	
in.	cm	in.	cm	in.	cm
50" x 80"	127 x 203	94"	239	87 ⁵ / ₁₆ "	222
57 ¹ / ₂ " x 92"	146 x 234	109"	277	99 ⁹ / ₁₆ "	252
60" x 96"	152 x 244	113"	287	103 ³ / ₁₆ "	262
65" x 104"	165 x 264	123"	312	111 ¹ / ₁₆ "	283
69" x 110"	175 x 279	130"	330	117 ⁷ / ₁₆ "	298
72 ¹ / ₂ " x 116"	184 x 295	137"	348	123 ³ / ₁₆ "	313
87" x 139"	221 x 353	164"	417	147 ⁷ / ₁₆ "	374

4:3 Video Format

Viewing Area (H x W)		Nominal Diagonal		Overall Case Length	
in.	cm	in.	cm	in.	cm
43" x 57"	109 x 145	72"	183	63 ¹ / ₁₆ "	160
50" x 67"	127 x 170	84"	213	73 ¹ / ₁₆ "	186
60" x 80"	152 x 203	100"	254	87 ⁵ / ₁₆ "	222
69" x 92"	175 x 234	120"	305	99 ⁹ / ₁₆ "	252
87" x 116"	221 x 295	150"	381	123 ³ / ₁₆ "	313
105" x 140"	267 x 356	180"	457	147 ⁷ / ₁₆ "	374
120" x 160"	305 x 406	200"	508	167 ¹ / ₁₆ "	425

Available with the Following Screen Surfaces



Matte White

Half Angle: 60° Gain: 1.0



High Contrast Matte White

Half Angle: 50° Gain: 1.1



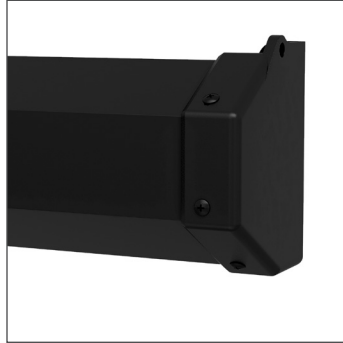
Video Spectra 1.5

Half Angle: 35° Gain: 1.5

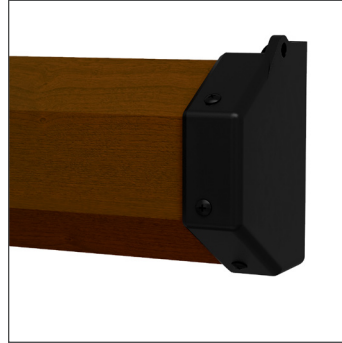
Product images



White Case (Standard)



Black Case



Veneer Case

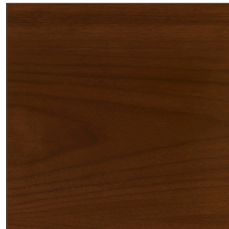
Veneer Finishes



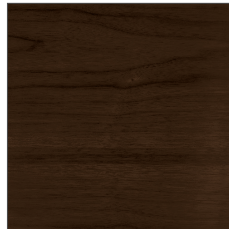
Light Oak Veneer



Medium Oak Veneer



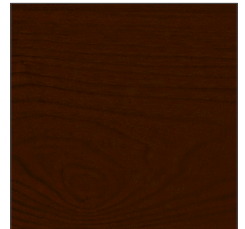
Natural Walnut Veneer



Heritage Walnut Veneer



Cherry Veneer



Mahogany Veneer



A BRAND OF MILESTONE AV TECHNOLOGIES | www.milestone.com

P 800.622.3737 / 574.267.8101 **F** 877.325.4832 / 574.267.7804

E info@da-lite.com

In British Columbia, Milestone AV Technologies ULC carries on business as MAVT Milestone AV Technologies ULC.

©2017 Milestone AV Technologies. DL-0502 (Rev. 3) 0717.

Da-Lite is a registered trademark of Milestone AV Technologies. All other brand names or marks are used for identification purposes and are trademarks of their respective owners. All patents are protected under existing designations. Other patents pending.