



## 2016 Spectrum 2 Product Brochure

The Spectrum 2 series features a new white aluminum housing with floating brackets and utilizes our MaxWhite™ FG screen material.



# Spectrum 2 Series



The Spectrum 2 series features a new white aluminum housing with floating brackets and utilizes our MaxWhite™ FG screen material.



## Screen Material:

- MaxWhite™ Fiberglass 1.1 Gain screen material is flat, durable, easy to clean and mildew resistant
- 180° wide-viewing angle for commercial and residential presentations
- 4 side black masking borders enhance contrast ratio and absorbs projector overshoot
- Black backing on material for sharper picture and clarity
- 4K Ultra HD and Active 3D ready
- Available in the following range of diagonal sizes:
  - 91"/ 100"/ 110" and 120" in 16:9 format

## Casing and Installation:

- Streamlined aluminum casing with white enamel coating is moisture resistant
- Suspended ceiling installation capable
- Floating mount brackets allow easy alignment for a wall or ceiling installation
- Ships fully assembled with standard 3-prong power connection ready to Plug & Play

## Control System:

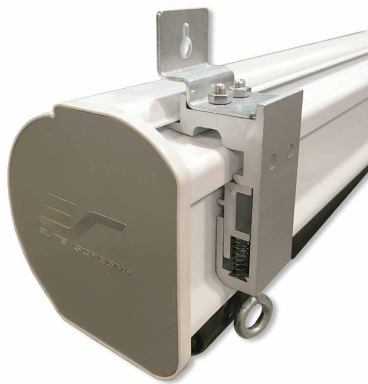
- 3-way integrated up/stop/down control switch
- Tubular motor allows swift operation with a superior weight tolerance and operational lifespan
- Optional Remote control kit: Wall box w/ RJ45 port, IR/RF remotes, 5-12 volt projector trigger cable, Wireless 5-12 volt Mono projector trigger cable, IR "eye" extension (Part# ZPM-RT)

## Quality and Reliability:

- Flame Retardant: Complies with NFPA 701 Standards
- GREENGUARD® Indoor Air Quality and GREENGUARD® Children & Schools Certified
- 2-year warranty from defects in workmanship
- 3-year warranty offered through ENR-G program (Education, Non-profit, Religious, and Government/Military)



Spectrum 2 Series



## Spectrum 2 Series

| Model       | Screen Diag. & Aspect Ratio | View Height (in) | View Width (in) | View Height (cm) | View Width (cm) | N.W. (lbs.) | G.W. (lbs.) | N.W. (kgs) | G.W. (Kgs) | Packaging Dimensions (LxHxW) | Gain | Screen Material | Case Color |
|-------------|-----------------------------|------------------|-----------------|------------------|-----------------|-------------|-------------|------------|------------|------------------------------|------|-----------------|------------|
| SPM100V     | 100"(4:3)                   | 60.0             | 80.0            | 152.4            | 203.2           | 23.6        | 30.7        | 10.7       | 13.9       | 91.0"x6.5"x6.5"              | 1.1  | MaxWhite™ FG    | White      |
| SPM135VT    | 135"(4:3)                   | 81.0             | 108.0           | 205.7            | 274.3           | 40.1        | 48.4        | 18.2       | 21.9       | 121.5"x6.5"x6.3"             | 1.1  | MaxWhite™ FG    | White      |
| SPM150VT    | 150"(4:3)                   | 90.0             | 120.0           | 228.6            | 304.8           | 41.8        | 53.8        | 19.0       | 24.4       | 134"6.2"x7"                  | 1.1  | MaxWhite™ FG    | White      |
| SPM91H-E12  | 91"(16:9)                   | 44.6             | 79.4            | 112.5            | 200.0           | 18.6        | 26.2        | 8.4        | 11.9       | 89.5"x6.5"x6.3"              | 1.1  | MaxWhite™ FG    | White      |
| SPM100H-E12 | 100"(16:9)                  | 49.0             | 87.0            | 124.5            | 221.0           | 25.3        | 30.8        | 11.5       | 14.0       | 99.5"x6.0"x5.8"              | 1.1  | MaxWhite™ FG    | White      |
| SPM110H-E12 | 110"(16:9)                  | 53.9             | 95.9            | 135.1            | 240.0           | 28.6        | 34.7        | 13.0       | 15.7       | 110.5"x5"x5.5"               | 1.1  | MaxWhite™ FG    | White      |
| SPM120H-E12 | 120"(16:9)                  | 58.8             | 104.6           | 149.6            | 265.7           | 30.0        | 39.7        | 13.6       | 18.1       | 118.1"x6.5"x6.1"             | 1.1  | MaxWhite™ FG    | White      |
| SPM138HT    | 138"(16:9)                  | 67.7             | 120.3           | 171.8            | 305.5           | 40.9        | 53.2        | 18.5       | 24.1       | 133.7"x6.5"x6.3"             | 1.1  | MaxWhite™ FG    | White      |
| SPM165HT    | 165"(16:9)                  | 81.0             | 144.0           | 205.4            | 365.2           | 48.3        | 61.3        | 21.9       | 27.8       | 157.3"x6.6"x6.3"             | 1.1  | MaxWhite™ FG    | White      |
| SPM165HT-E8 | 165"(16:9)                  | 81.0             | 144.0           | 205.4            | 365.2           | 48.3        | 61.3        | 21.9       | 27.8       | 157.3"x6.6"x6.3"             | 1.1  | MaxWhite™ FG    | White      |

## Spectrum 2 Series Dimensions Table

| Model       | Screen Diag. & Aspect Ratio | View Width (A) | Weight Bar Length (A1) | A2 | L/R Black Border (A3) | A4   | Overall Length (A5) | View Height (B) | Top Black Drop (B1) | B2   | Overall Height (B3) | C  | C1 | C2   | C3 |
|-------------|-----------------------------|----------------|------------------------|----|-----------------------|------|---------------------|-----------------|---------------------|------|---------------------|----|----|------|----|
| SPM100V     | 100" (4:3)                  | 2032           | 2212                   | 70 | 50                    | 2217 | 2228                | 1524            | 127                 | 1722 | 1819                | 90 | 90 | 1628 | 28 |
| SPM135VT    | 135" (4:3)                  | 2743           | 2923                   | 70 | 50                    | 2928 | 2938                | 2057            | 102                 | 2229 | 2327                | 98 | 98 | 2338 | 28 |
| SPM150VT    | 150" (4:3)                  | 3048           | 3228                   | 70 | 50                    | 3233 | 3243                | 2286            | 102                 | 2458 | 2556                | 98 | 98 | 2643 | 28 |
| SPM91H-E12  | 91" (16:9)                  | 2017           | 2173                   | 70 | 38                    | 2178 | 2188                | 1133            | 305                 | 1508 | 1596                | 90 | 88 | 1588 | 28 |
| SPM100H-E12 | 100" (16:9)                 | 2214           | 2394                   | 70 | 50                    | 2399 | 2409                | 1245            | 305                 | 1620 | 1708                | 90 | 88 | 1809 | 28 |
| SPM110H-E12 | 110" (16:9)                 | 2435           | 2615                   | 70 | 50                    | 2620 | 2630                | 1370            | 305                 | 1745 | 1833                | 90 | 88 | 2030 | 28 |
| SPM120H-E12 | 120" (16:9)                 | 2657           | 2837                   | 70 | 50                    | 2842 | 2852                | 1494            | 305                 | 1869 | 1957                | 90 | 88 | 2252 | 28 |
| SPM138HT    | 138" (16:9)                 | 3055           | 3235                   | 70 | 50                    | 3240 | 3250                | 1719            | 102                 | 1891 | 1989                | 98 | 98 | 2650 | 28 |
| SPM165HT    | 165" (16:9)                 | 3653           | 3833                   | 70 | 50                    | 3838 | 3848                | 2054            | 152                 | 2276 | 2374                | 98 | 98 | 3248 | 28 |
| SPM165HT-E8 | 165" (16:9)                 | 3653           | 3833                   | 70 | 50                    | 3838 | 3848                | 2054            | 203                 | 2734 | 2832                | 98 | 98 | 3248 | 28 |

Unit: mm

| Model       | Screen Diag. & Aspect Ratio | View Width (A) | Weight Bar Length (A1) | A2  | L/R Black Border (A3) | A4    | Overall Length (A5) | View Height (B) | Top Black Drop (B1) | B2    | Overall Height (B3) | C   | C1  | C2    | C3  |
|-------------|-----------------------------|----------------|------------------------|-----|-----------------------|-------|---------------------|-----------------|---------------------|-------|---------------------|-----|-----|-------|-----|
| SPM100V     | 100"(4:3)                   | 80.0           | 87.1                   | 2.8 | 2.0                   | 87.3  | 87.7                | 60.0            | 5.0                 | 67.8  | 71.2                | 3.5 | 3.5 | 64.1  | 1.1 |
| SPM135VT    | 135" (4:3)                  | 108.0          | 115.1                  | 2.8 | 2.0                   | 115.3 | 115.7               | 81.0            | 4.0                 | 87.8  | 91.6                | 3.9 | 3.9 | 92.0  | 1.1 |
| SPM150VT    | 150" (4:3)                  | 120.0          | 127.1                  | 2.8 | 2.0                   | 127.3 | 127.7               | 90.0            | 4.0                 | 96.8  | 100.6               | 3.9 | 3.9 | 104.1 | 1.1 |
| SPM91H-E12  | 91" (16:9)                  | 79.4           | 85.6                   | 2.8 | 1.5                   | 85.7  | 86.1                | 44.6            | 12.0                | 59.4  | 62.8                | 3.5 | 3.5 | 62.5  | 1.1 |
| SPM100H-E12 | 100" (16:9)                 | 87.2           | 94.3                   | 2.8 | 2.0                   | 94.4  | 94.8                | 49.0            | 12.0                | 63.8  | 67.2                | 3.5 | 3.5 | 71.2  | 1.1 |
| SPM110H-E12 | 110" (16:9)                 | 95.9           | 103.0                  | 2.8 | 2.0                   | 103.1 | 103.5               | 53.9            | 12.0                | 68.7  | 72.2                | 3.5 | 3.5 | 79.9  | 1.1 |
| SPM120H-E12 | 120" (16:9)                 | 104.6          | 111.7                  | 2.8 | 2.0                   | 111.9 | 112.3               | 58.8            | 12.0                | 73.6  | 77.0                | 3.5 | 3.5 | 88.7  | 1.1 |
| SPM138HT    | 138" (16:9)                 | 120.3          | 127.4                  | 2.8 | 2.0                   | 127.6 | 128.0               | 67.7            | 4.0                 | 74.4  | 78.3                | 3.9 | 3.9 | 104.3 | 1.1 |
| SPM165HT    | 165" (16:9)                 | 143.8          | 150.9                  | 2.8 | 2.0                   | 151.1 | 151.5               | 80.9            | 6.0                 | 89.6  | 93.5                | 3.9 | 3.9 | 127.9 | 1.1 |
| SPM165HT-E8 | 165" (16:9)                 | 143.8          | 150.9                  | 2.8 | 2.0                   | 151.1 | 151.5               | 80.9            | 8.0                 | 107.6 | 111.5               | 3.9 | 3.9 | 127.9 | 1.1 |

Unit: inch

**Note: Data Error ±1".** The listed measurements are for general reference only. Please contact Elite Screens to verify product design and dimensions before attempting to integrate its products with any structural or furniture modification. Although a manufacturer may offer product advice, it may be taken or disregarded at the integrator's discretion. Elite Screens will not be held responsible or be otherwise liable for faulty installations.

